

Simplicity 5276

cutting and

sewing directions

select pattern pieces

for your view

23 pieces given

VIEW 1
9 pieces
blouse
A, B, C, D
pants - E, F
jacket
G, H, K

VIEW 2
6 pieces
pants
E, F
top
L, M, N, P

VIEW 3
5 pieces
blouse
A, B, C, D
pantiskirt
R

VIEW 4
5 pieces
dress
S, T, AX,
BX, CX

VIEW 5
3 pieces
shorts
DX
dress
EX, FX

jacket view 1
K sleeve
J back
G front

pants view 1-2
G front
back

blouse view 1-3
C collar
A front
B back
D sleeve

pantiskirt view 3
R

dress view 5
FX back front
EX front

shorts view 5
DX

dress view 4
I AX sleeve
S bodice front
T bodice back

dress view 6
GX

top view 2
P sleeve
N collar
M back
L front

skirt BX front
skirt CX back

VIEW 6
1 piece
dress - GX

FRONT AND BACK
1 2
3
4
5
6

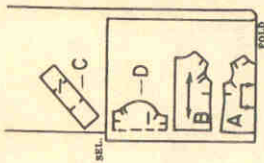
Courtesy CrissyAndBeth.com

cutting layouts

Disregard any perforations on tissue pattern pieces.

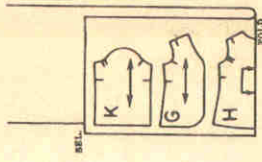
VIEW 1

blouse



35'' 36'' (90cm),
44'' 45'' (115cm)
fabric
with or
without nap
all sizes

jacket



35'' 36'' (90cm),
44'' 45'' (115cm)
fabric
with or
without nap
all sizes

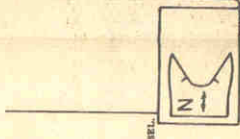
VIEW 2

top



35'' 36'' (90cm),
44'' 45'' (115cm)
fabric
with or
without nap
all sizes

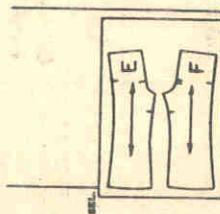
contrasting collar



35'' 36'' (90cm),
44'' 45'' (115cm)
fabric
with or
without nap
all sizes

VIEW 1

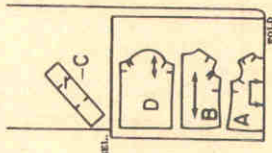
pants



35'' 36'' (90cm),
44'' 45'' (115cm)
fabric
with or
without nap
all sizes

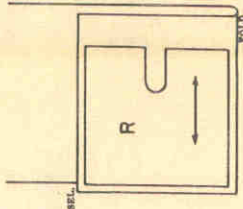
VIEW 3

blouse



35'' 36'' (90cm),
44'' 45'' (115cm)
fabric
with or
without
nap
all sizes

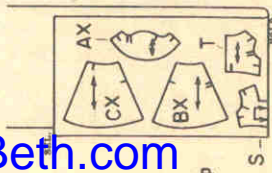
pantskirt



35'' 36'' (90cm),
44'' 45'' (115cm)
fabric
with or
without nap
all sizes

VIEW 4

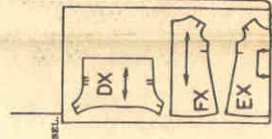
dress



35'' 36'' (90cm),
44'' 45'' (115cm)
fabric
with or
without nap
all sizes

VIEW 5

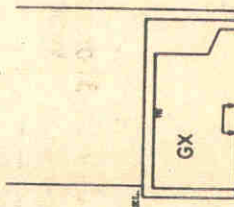
dress and shorts



35'' 36'' (90cm),
44'' 45'' (115cm)
fabric
with or
without nap
all sizes

VIEW 6

dress



35'' 36'' (90cm),
44'' 45'' (115cm)
fabric
with or
without nap
all sizes

Courtesy CrissyAndBeth.com

The metric equivalent for inches is in parenthesis: 1/4" (6mm), 3/8" (9mm), 7-1/2" (19cm).

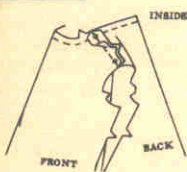
NOTE: Stitch 1/4" seams, matching notches. Press seams open, unless otherwise instructed.

NOTE: To ease, stitch along seam line, using a long machine-stitch.

VIEW 1
blouse

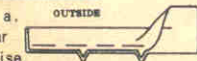
front and back

1. Stitch shoulder seams, matching small dots. Stitch along seam line at neck edge.

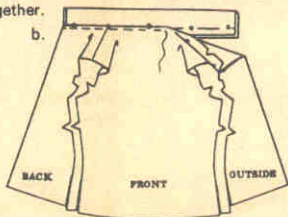


collar

2. a—Fold collar in half lengthwise, **WRONG** sides together. Baste raw edges together.



b.

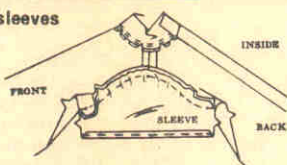


b—Press under neck edge of blouse along stitching; clip curves. Top-stitch neck edge over long raw edge of collar, matching seam lines, centers and small dots.



c—Stitch **RIGHT** back edge to **INSIDE** along center back line.

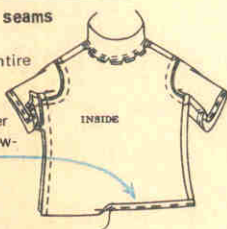
sleeves



3. Ease top of sleeve between notches. Stitch under 1/4" on lower edge. With **RIGHT** sides together, pin sleeve to armhole edge, matching small dots. Pull up stitching to fit. Stitch. Press seam toward sleeve.

underarm seams

4. Stitch entire underarm seams. Stitch under 1/4" on lower edge.

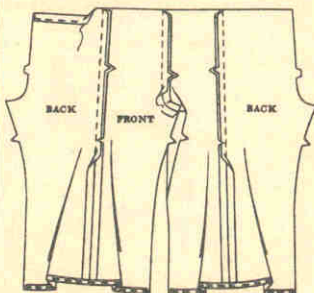


finishing

5. Lap **RIGHT** back over **LEFT**, matching centers; fasten with snaps.

VIEW 1
pants

front, back and casing



1. Stitch center front seam. Clip curves. Stitch front to back at side seams. Clip curves. Stitch under 1/4" on leg edges. To form casing, press upper edge to **INSIDE** along solid line. Stitch 3/8" from fold.

elastic and seams



2. Cut a piece of elastic 7-1/2" long. Insert elastic thru casing; sew ends. Stitch center back seam. Stitch inner leg seam.

VIEW 1
jacket

front and back

1. Stitch shoulder seams, matching small dots.



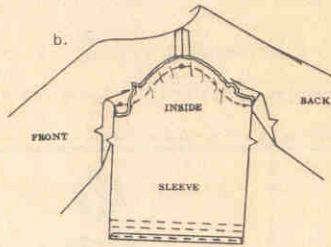
sleeves

2. a—Ease top of sleeve between notches. Stitch under 1/4" on lower edge. On **OUTSIDE**, stitch center of middy braid along solid lines.



DIRECTIONS CONTINUED ON OTHER SIDE

Courtesy CrissyAndBeth.com



b—With RIGHT sides together, pin sleeve to armhole edge, matching small dots. Pull up stitching to fit. Stitch. Press seam toward sleeve.

underarm seams



3. Stitch entire underarm seams. Stitch under 1/4" on lower, front and neck edges, clipping curves.

finishing



4. Sew buttons to RIGHT front at small dots. Lap RIGHT front over LEFT, matching centers; fasten with snaps under buttons.

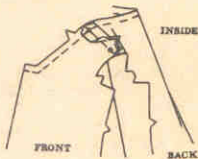


Make pants same as view 1.

top

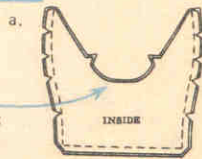
front and back

1. Stitch shoulder seams, matching small dots. Stitch along seam line at neck edge.

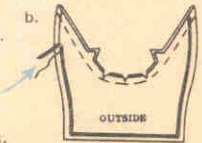


collar

2. a—With RIGHT sides together, stitch facing to collar, leaving notched edges open. Trim corners; clip curves.

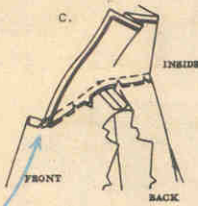


b—Turn collar; press. Baste raw edges together.



On OUTSIDE, stitch center of middy braid along solid line, folding out fullness at corners.

c. Clip top neck edge to stitching along curves and to medium dots at inner corners. On OUTSIDE, pin collar to neck edge, matching centers and small dots. Stitch. Clip curves. Press seam toward top, pressing under 1/4" on remaining neck edge.



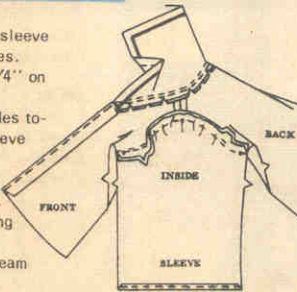
d—Top-stitch close to neck seam under collar.

Stitch RIGHT front edge to INSIDE along center line.



sleeves

3. Ease top of sleeve between notches. Stitch under 1/4" on lower edge. With RIGHT sides together, pin sleeve to armhole edge, matching small dots. Pull up stitching to fit. Stitch. Press seam toward sleeve.



underarm seams

4. Stitch entire underarm seams. Stitch under 1/4" on lower edge.



finishing

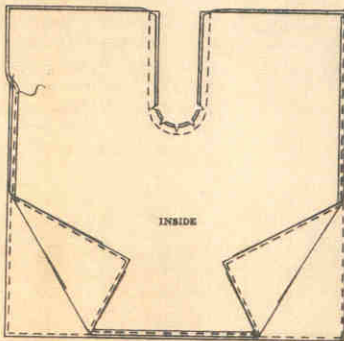
5. Lap RIGHT front over LEFT, matching centers; fasten with snaps. Wear ribbon tie, as shown on front of envelope.



Make blouse same as view 1.

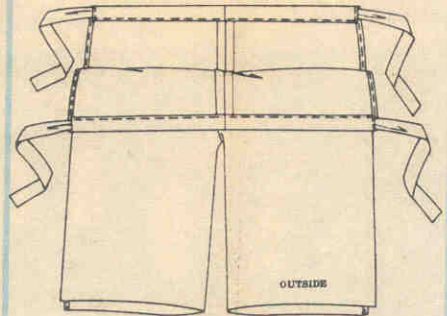
pantskirt

preparing pantskirt



1. Stitch under 1/4" on side and lower edges of both pantskirt sections. Place the two sections together with RIGHT sides together. Stitch the curved center seam. Clip curves.

casings and drawstrings



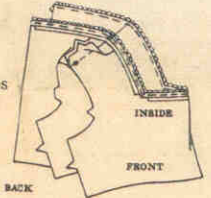
2. Open out pants and hold as shown. To form casing on each section, press upper edges to INSIDE along solid lines. Stitch 3/8" from fold. Cut ribbon for drawstring in half. Insert ribbon thru each casing, having ends extend evenly. To wear pantskirt, bring side edges of front to back; tie drawstring. Lap side edges of back over front; tie drawstring at center front, as shown on front of envelope.



dress

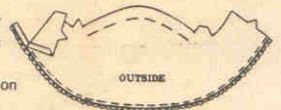
bodice front and back

1. Stitch shoulder seams, matching small dots. Press under 1/4" on neck edge, clipping curves and small dots at inner corners. Stitch neck edge over straight edge of picot edging.

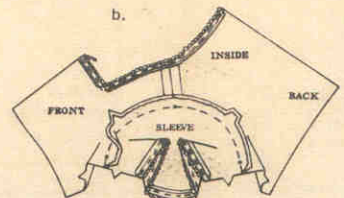


sleeves

2. a—Ease top of sleeve between notches. Press under 1/4" on lower edge. Stitch lower edge over straight edge of picot edging.

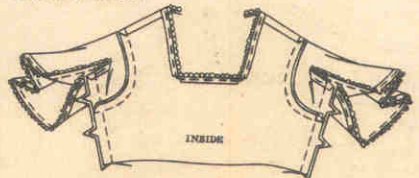


b.



b—With RIGHT sides together, pin sleeve to armhole edge, matching small dots. Pull up stitching to fit. Stitch. Press seam toward sleeve.

underarm seams

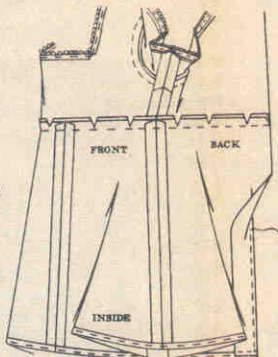


3. Stitch entire underarm seams.

Courtesy CrissyAndBeth.com

skirt front and back and seams

4. Stitch center front and side seams of skirt. With RIGHT sides together, pin skirt to bodice, matching centers and sides. Stitch. Clip curves. Press seam up, Stitch under 1/4'' on lower edge. Stitch RIGHT back edge to INSIDE along center line.

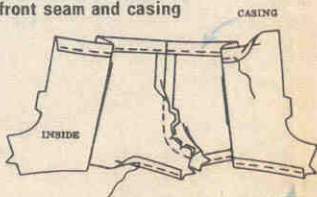


finishing

1. Lap RIGHT back over LEFT, matching centers; fasten with snaps.

VIEW 5 shorts

center front seam and casing

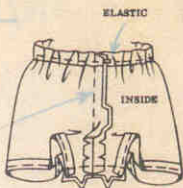


1. Stitch center front seam. Clip curves. Stitch under 1/4'' on leg edges.

To form casing, press upper edge to INSIDE along solid line. Stitch 3/8'' from fold.

elastic and seams

2. Cut a piece of elastic 7-1/2'' long. Insert elastic thru casing; sew ends. Stitch center back seam. Clip curves. Stitch inner leg seam.

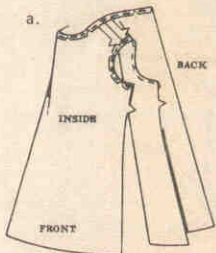


VIEW 5 dress

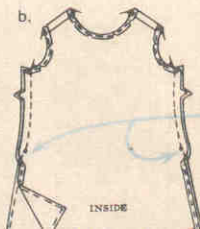
front and back

1. a—Stitch shoulder seams, matching small dots.

Stitch under 1/4'' on neck and armhole edges, clipping curves.



b—Stitch side seams above small dot. Stitch under 1/4'' on lower and side opening edges.



rick-rack trim

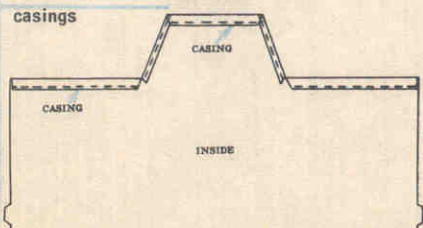
2. On OUTSIDE, pin one color rick-rack along the inner solid lines; pin second color rick-rack along the outer solid lines. Stitch along center of rick-rack. Stitch RIGHT back opening edge to INSIDE along center line.



finishing

Lap RIGHT back over LEFT, matching centers; fasten with snaps.

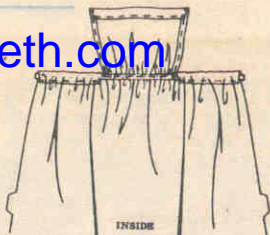
casings



1. Clip to small dots at inner corners. Stitch under 1/4'' on edges above clips. Form neck and waistline casings as follows: Press edges to INSIDE along solid line. Stitch 3/8'' from fold.

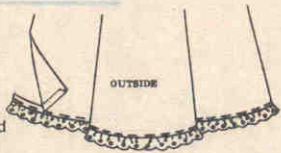
elastic

2. Cut a piece of elastic 7-1/2'' long for waistline casing. Insert elastic thru waist casings, as shown. Sew ends. Pin elastic across dress. Stitch along center of elastic between casings, stretching elastic while stitching.



eyelet edging

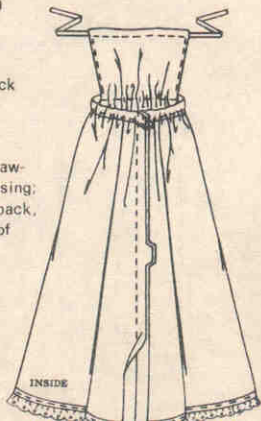
3. Press under 1/4'' on lower edge. Stitch lower edge over bound edge of edging.



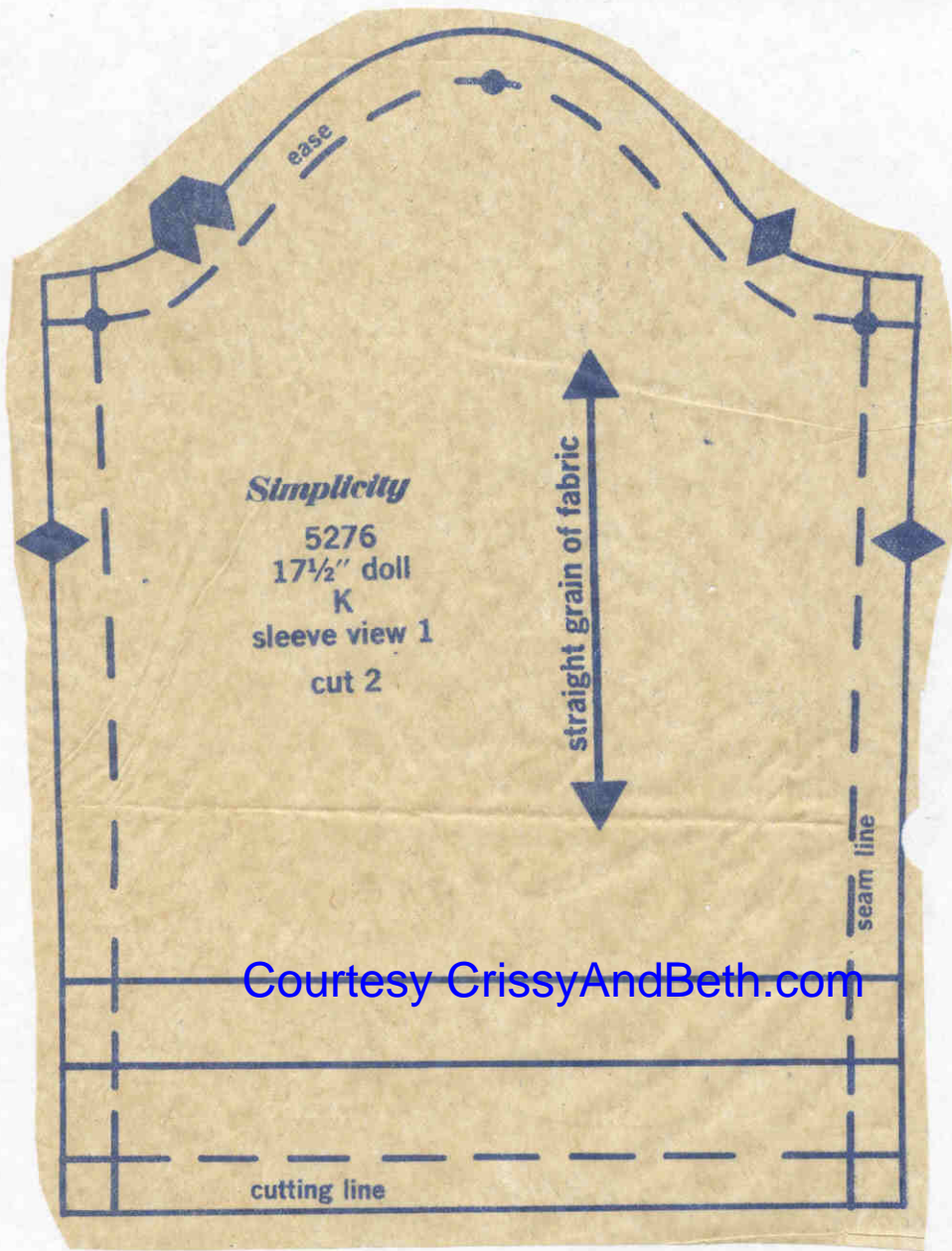
center back seam and finishing

4. Stitch center back seam.

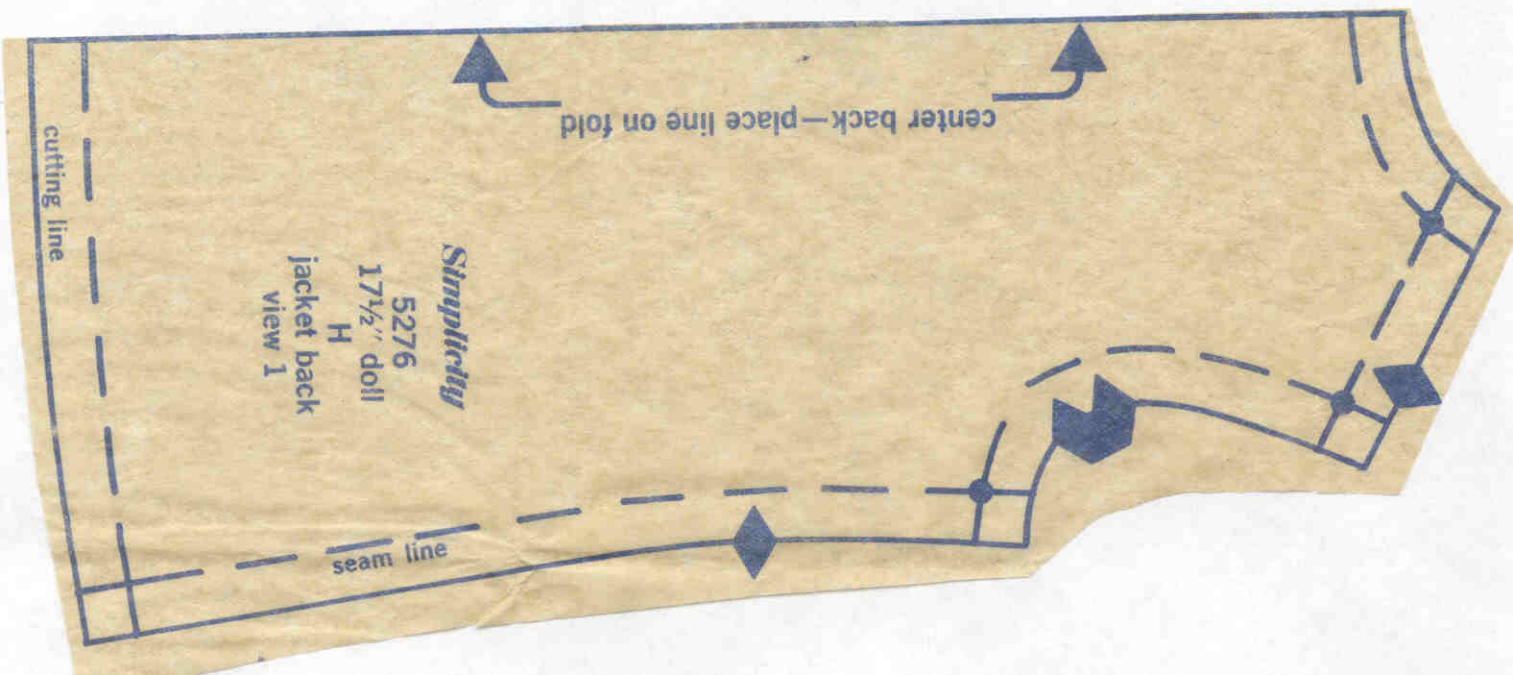
Insert ribbon for drawstring thru neck casing; tie ends at center back, as shown on front of envelope.

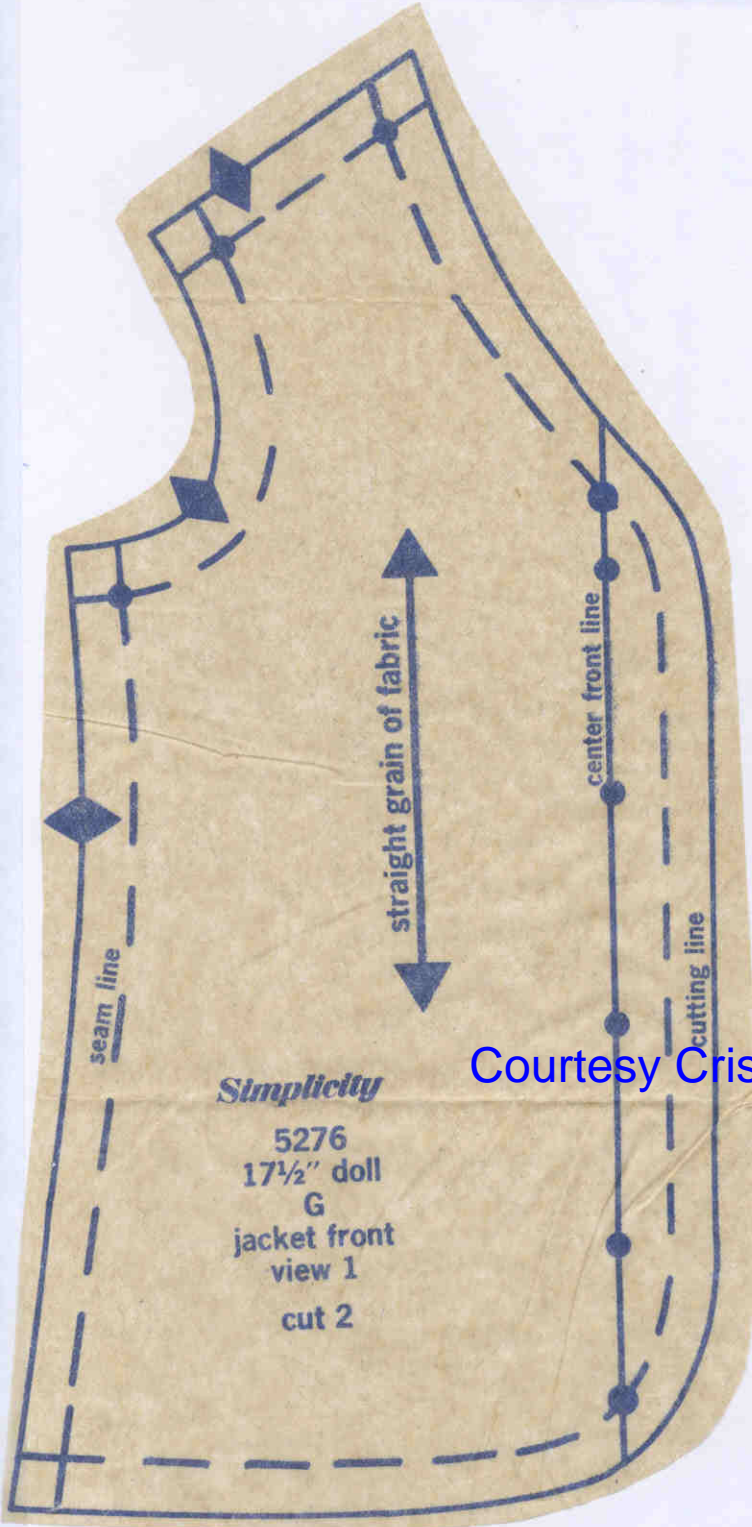


Courtesy CrissyAndBeth.com



Courtesy CrissyAndBeth.com

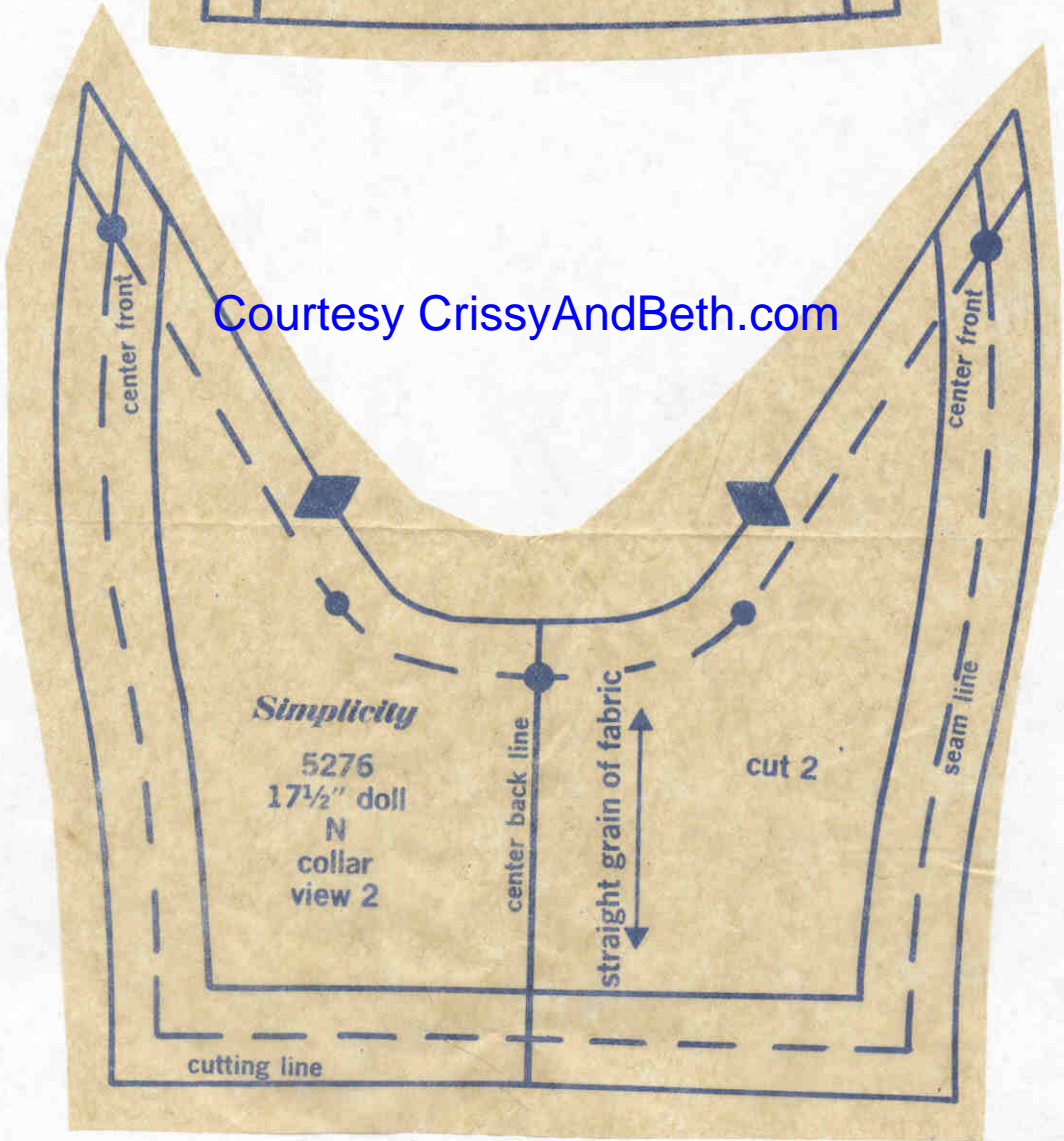
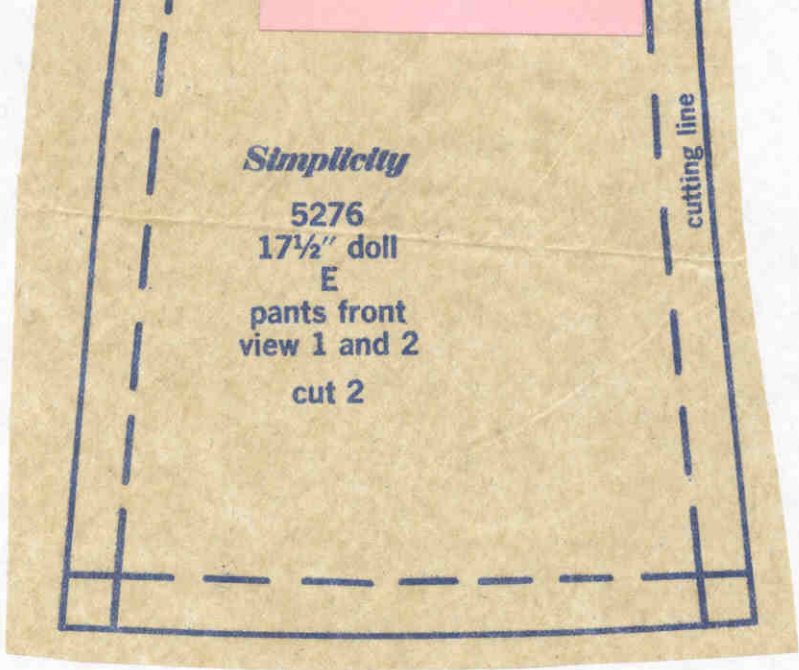




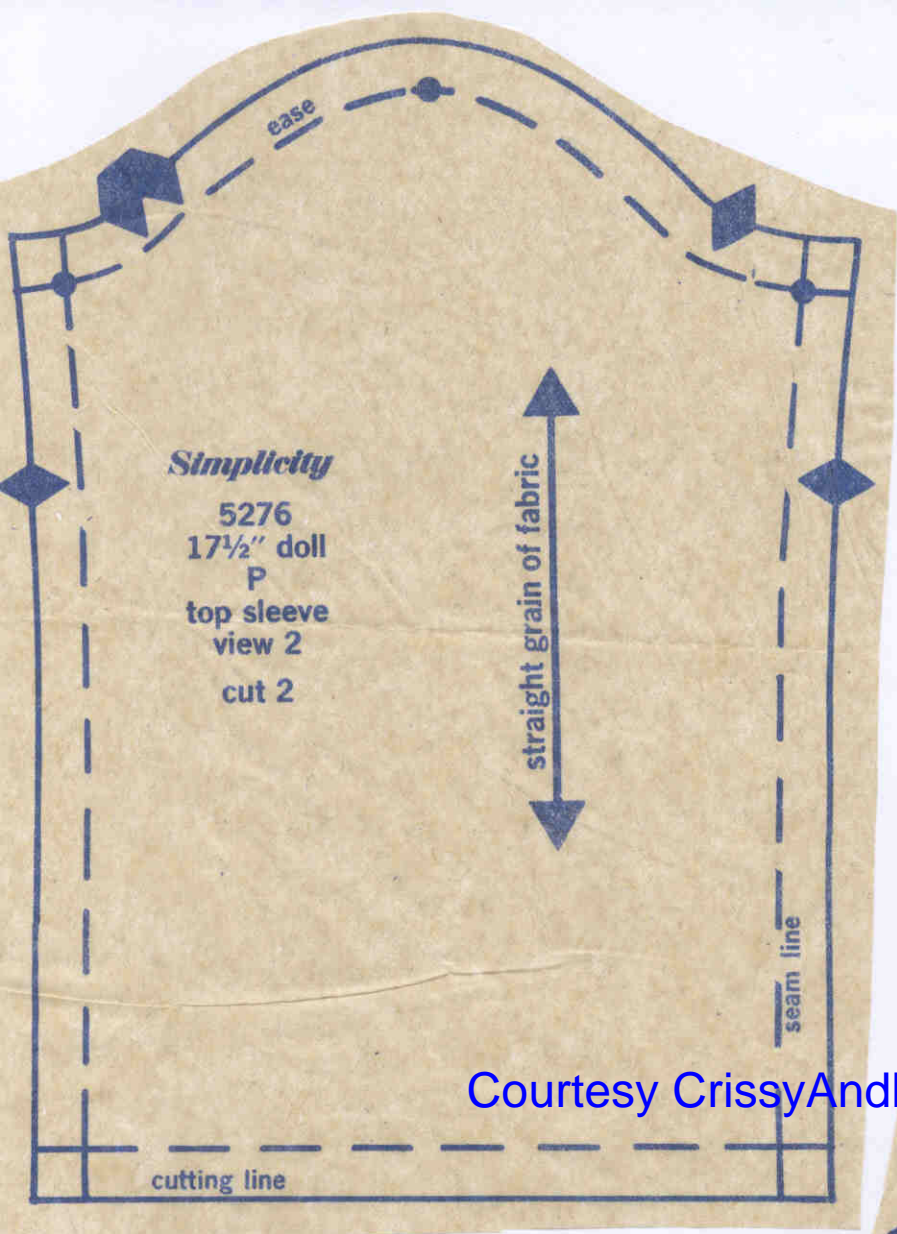
Courtesy CrissyAndBeth.com



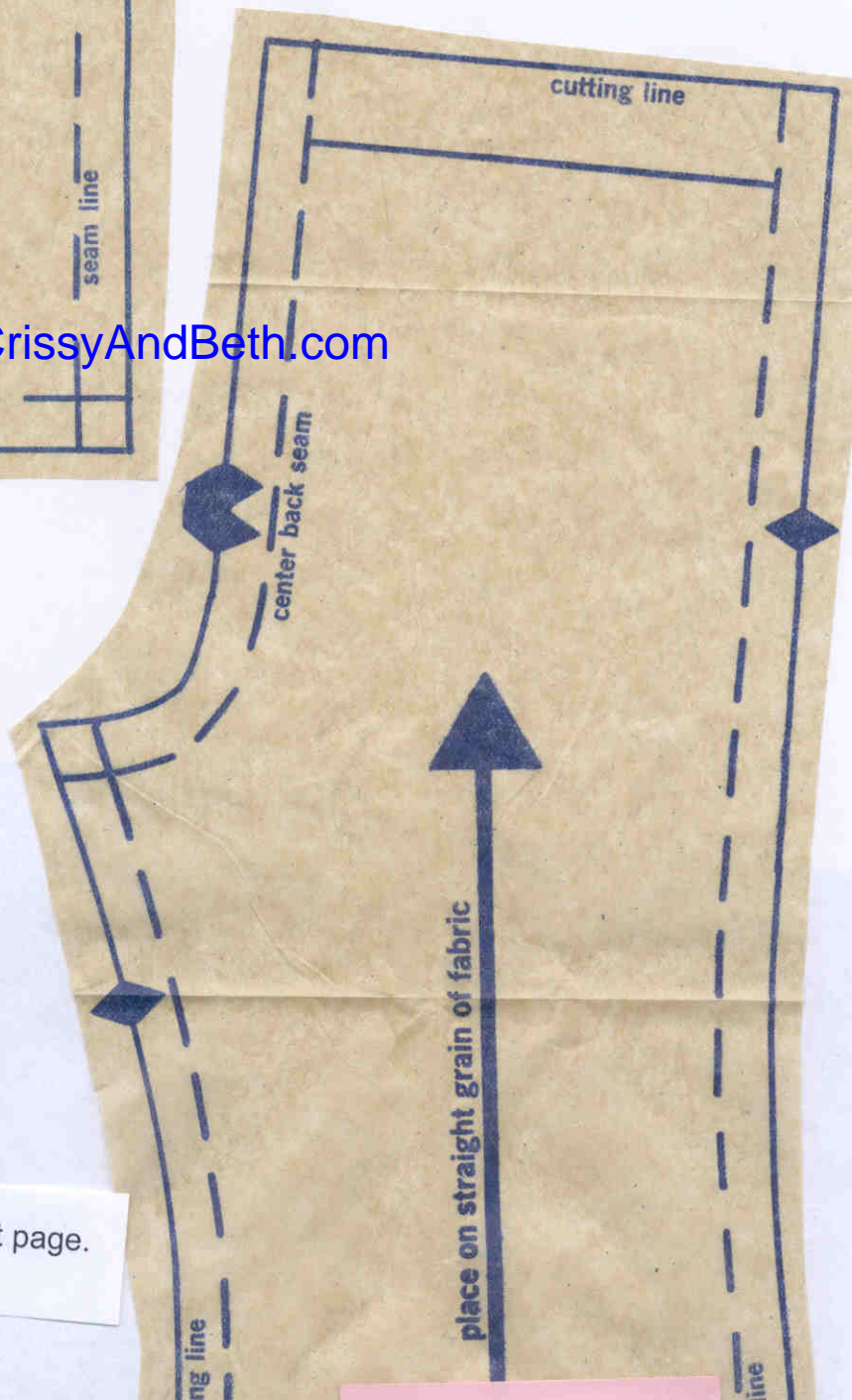
This piece is continued on next page.



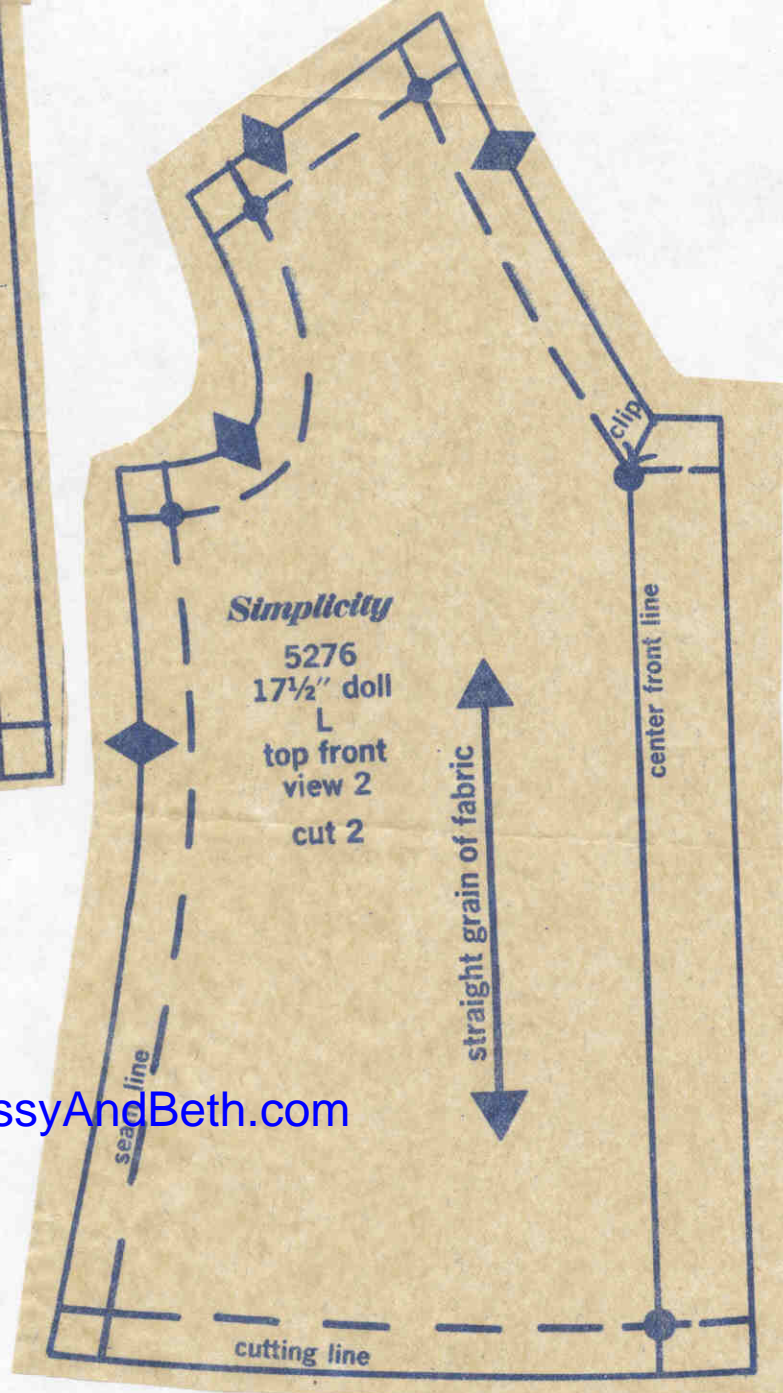
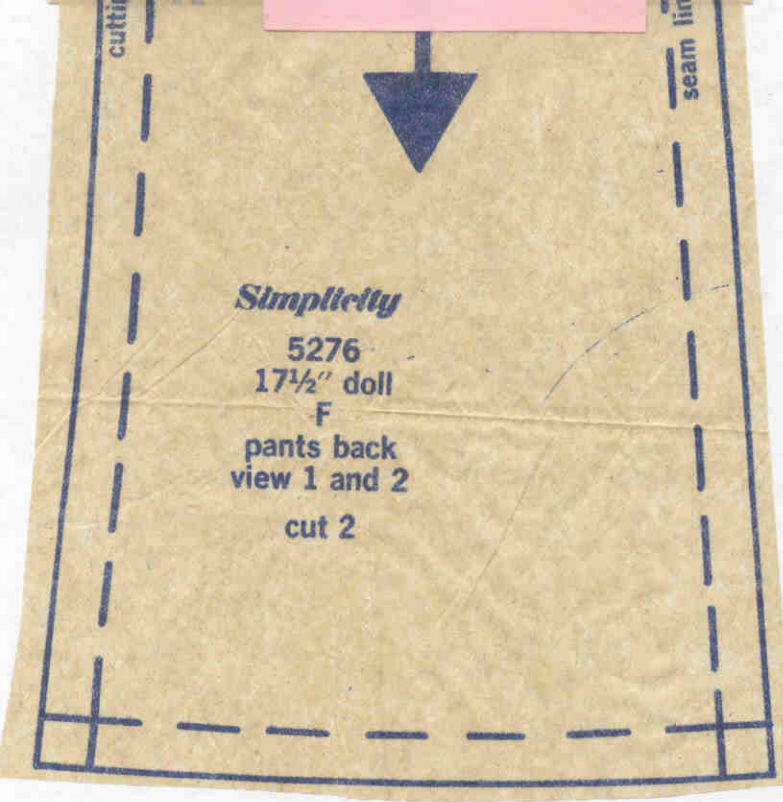
Courtesy CrissyAndBeth.com



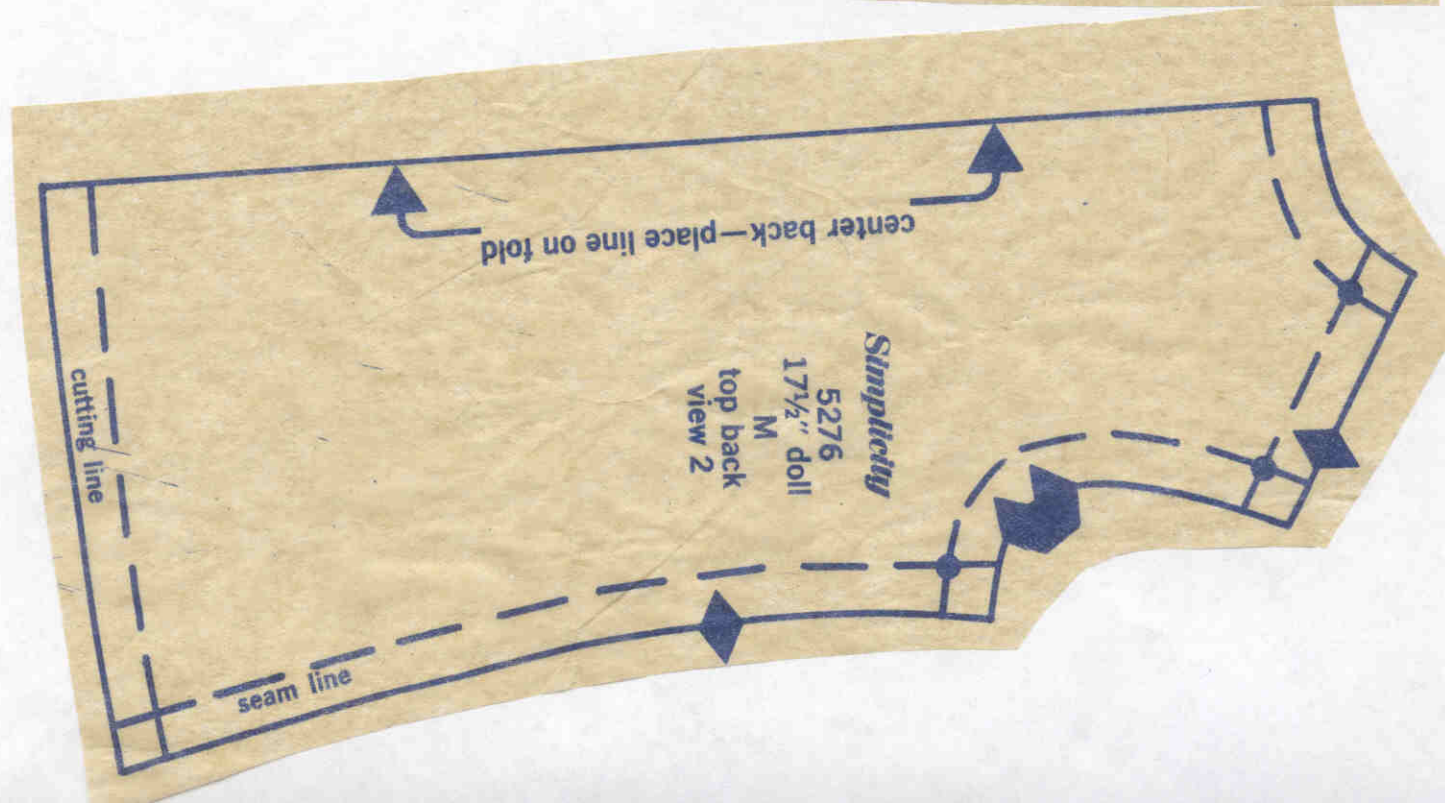
Courtesy CrissyAndBeth.com

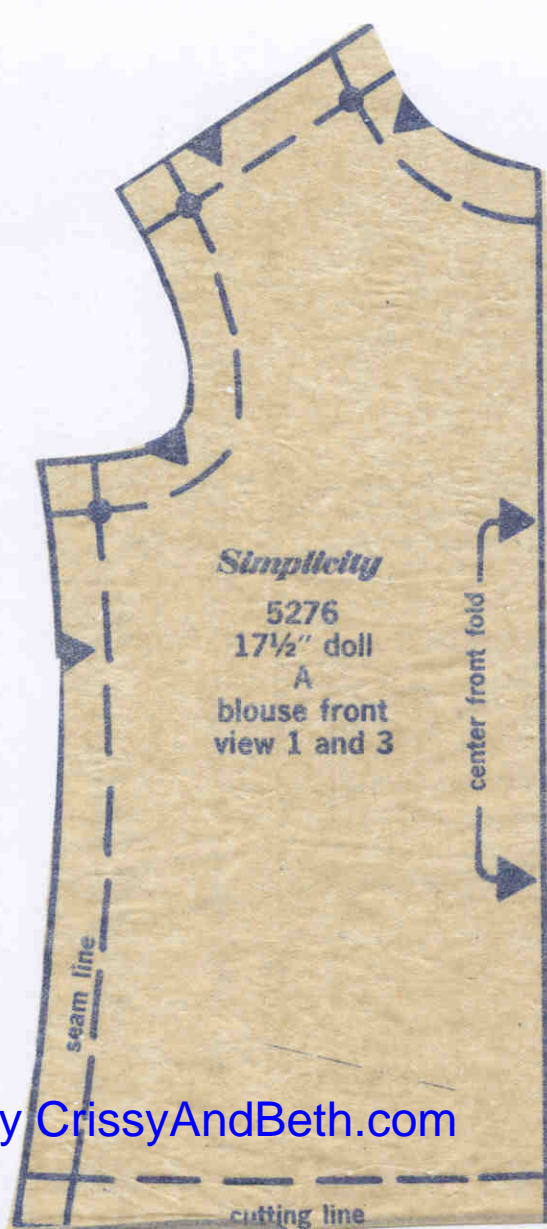
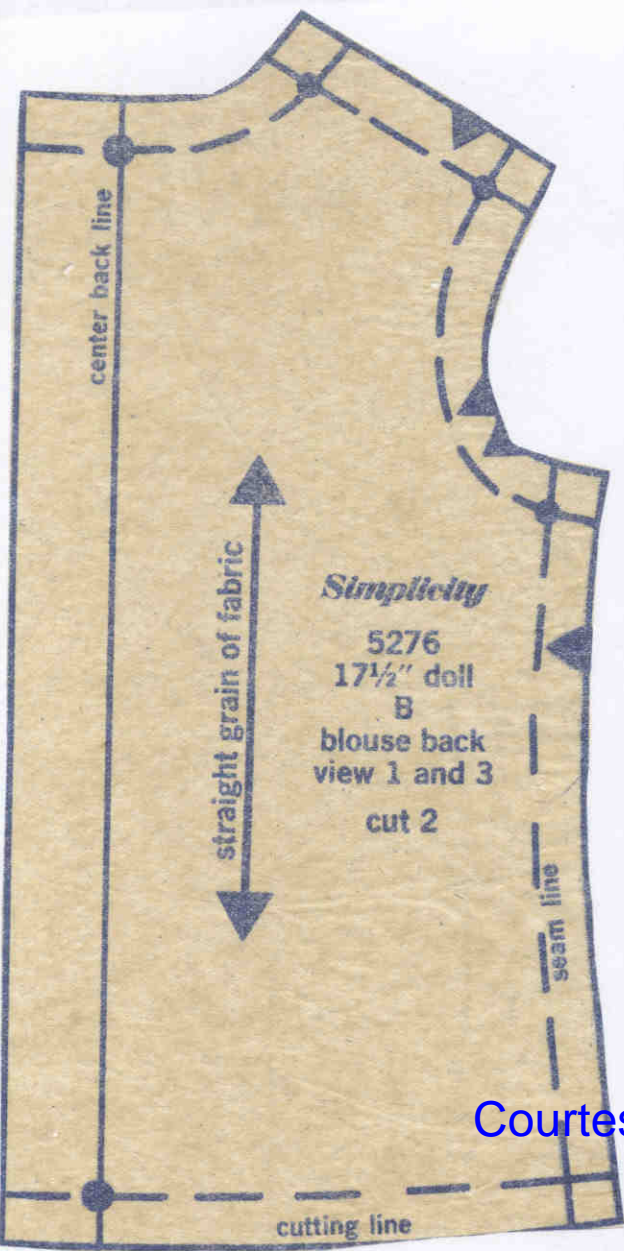


This piece is continued on next page.

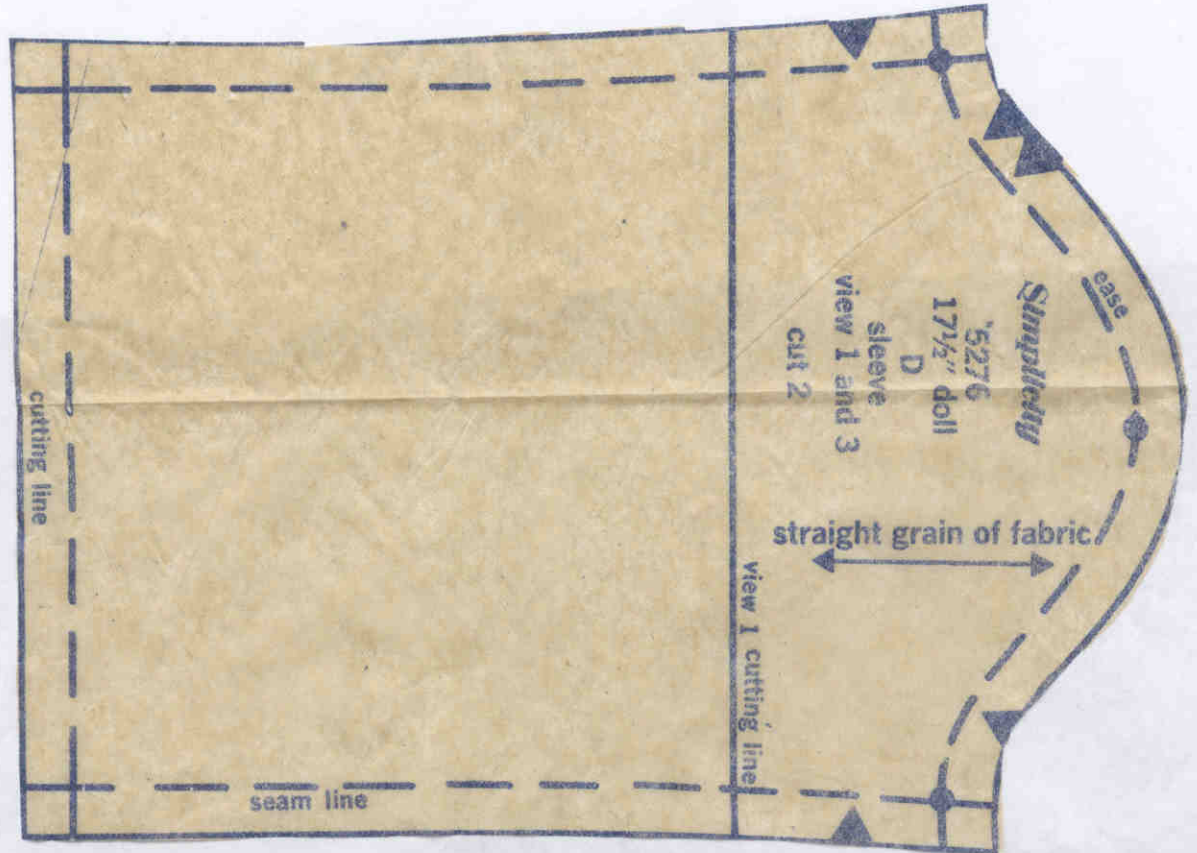


Courtesy CrissyAndBeth.com





Courtesy CrissyAndBeth.com



This piece is continued on next page.

seam line

Courtesy CrissyAndBeth.com

5276
17½" doll
R
pantskirt view 3
cut 2

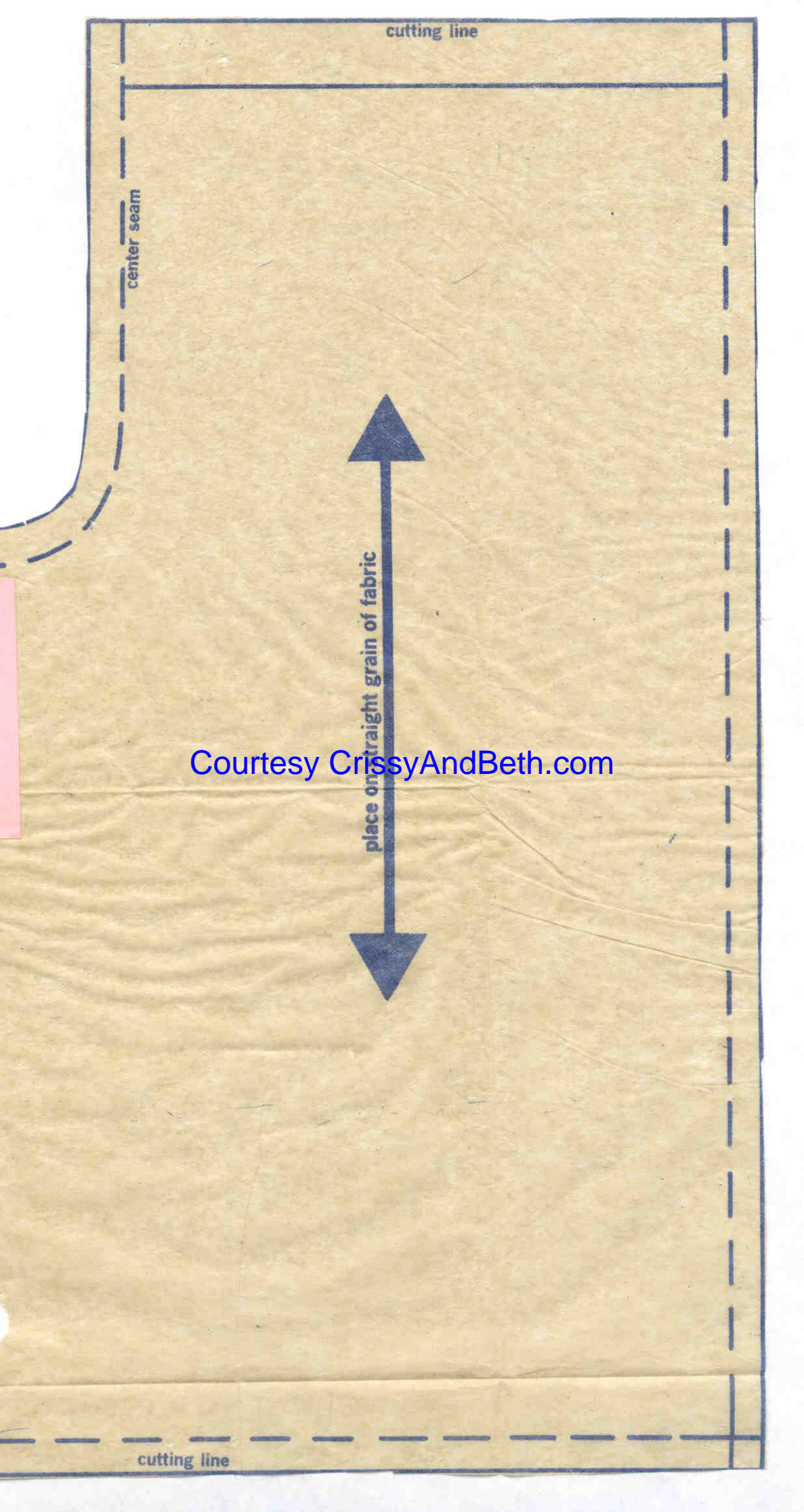
cutting line

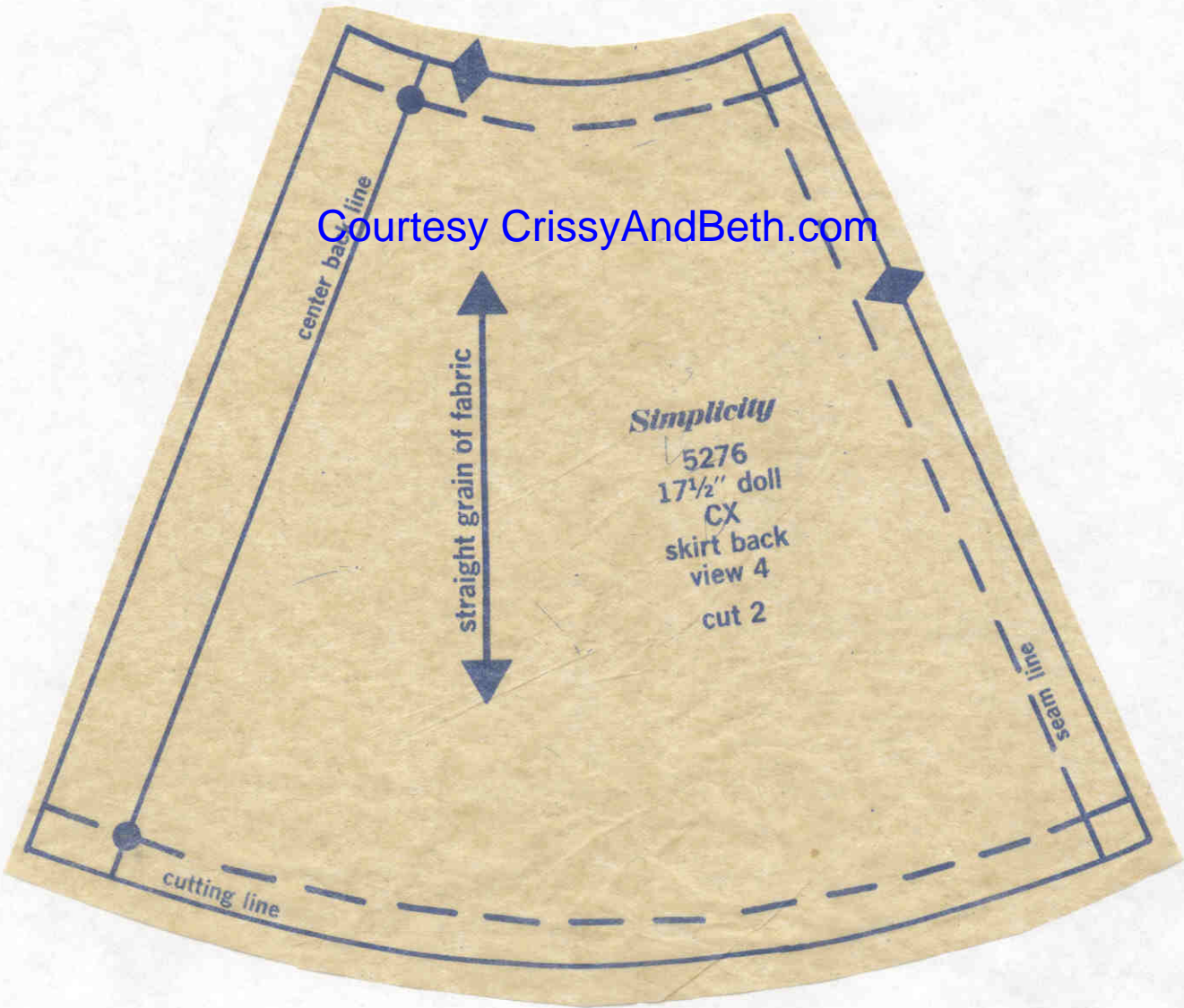
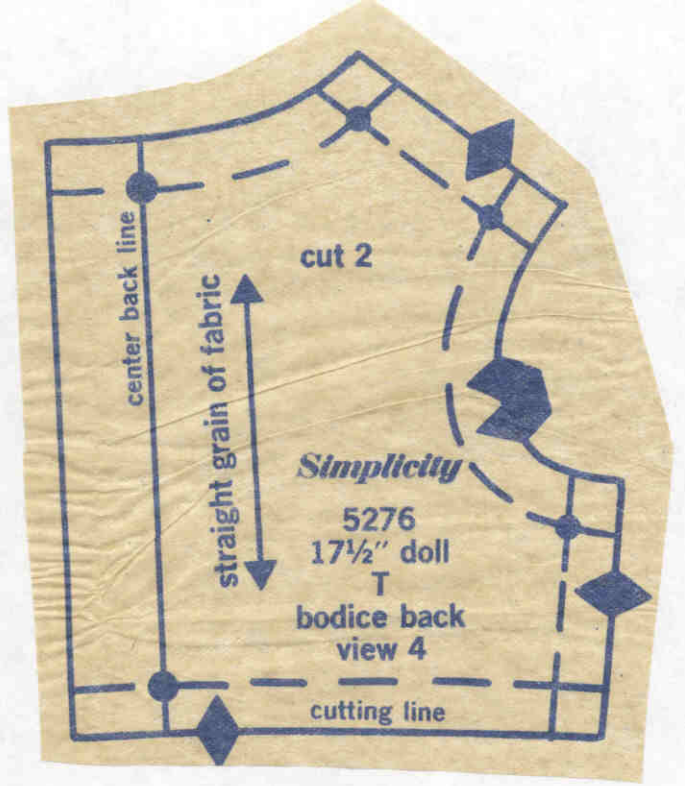
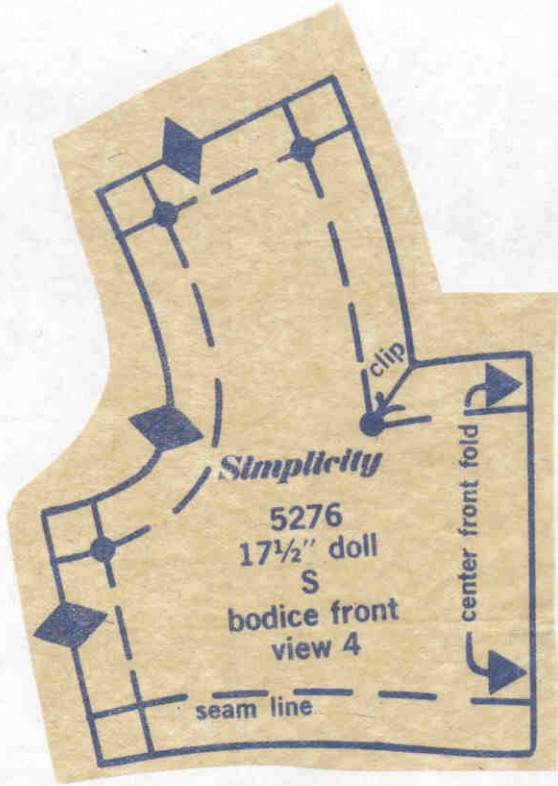
center seam

place on straight grain of fabric

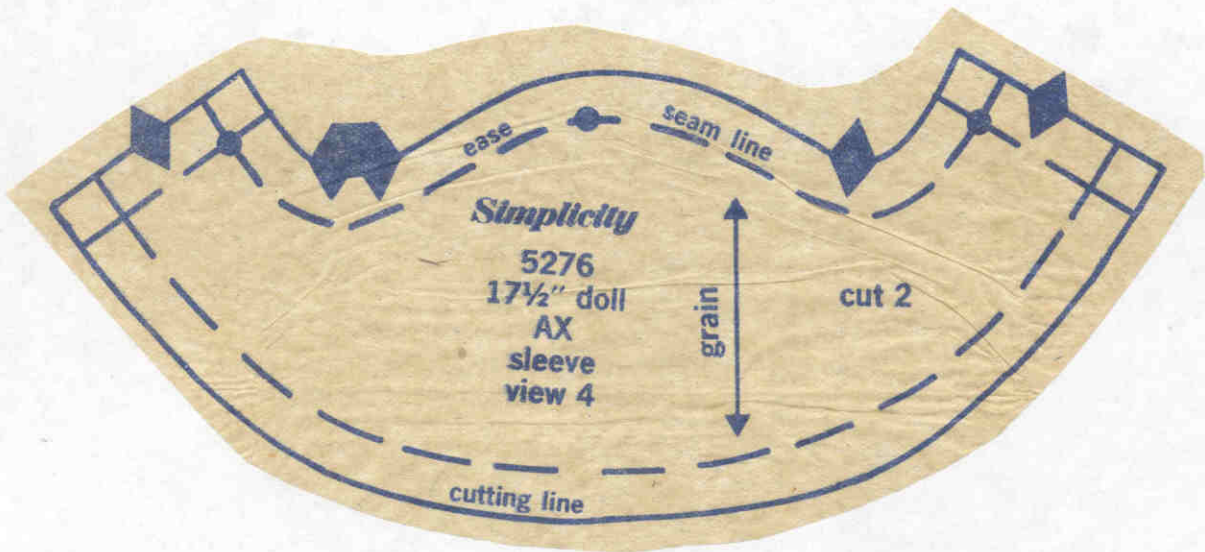
Courtesy CrissyAndBeth.com

cutting line

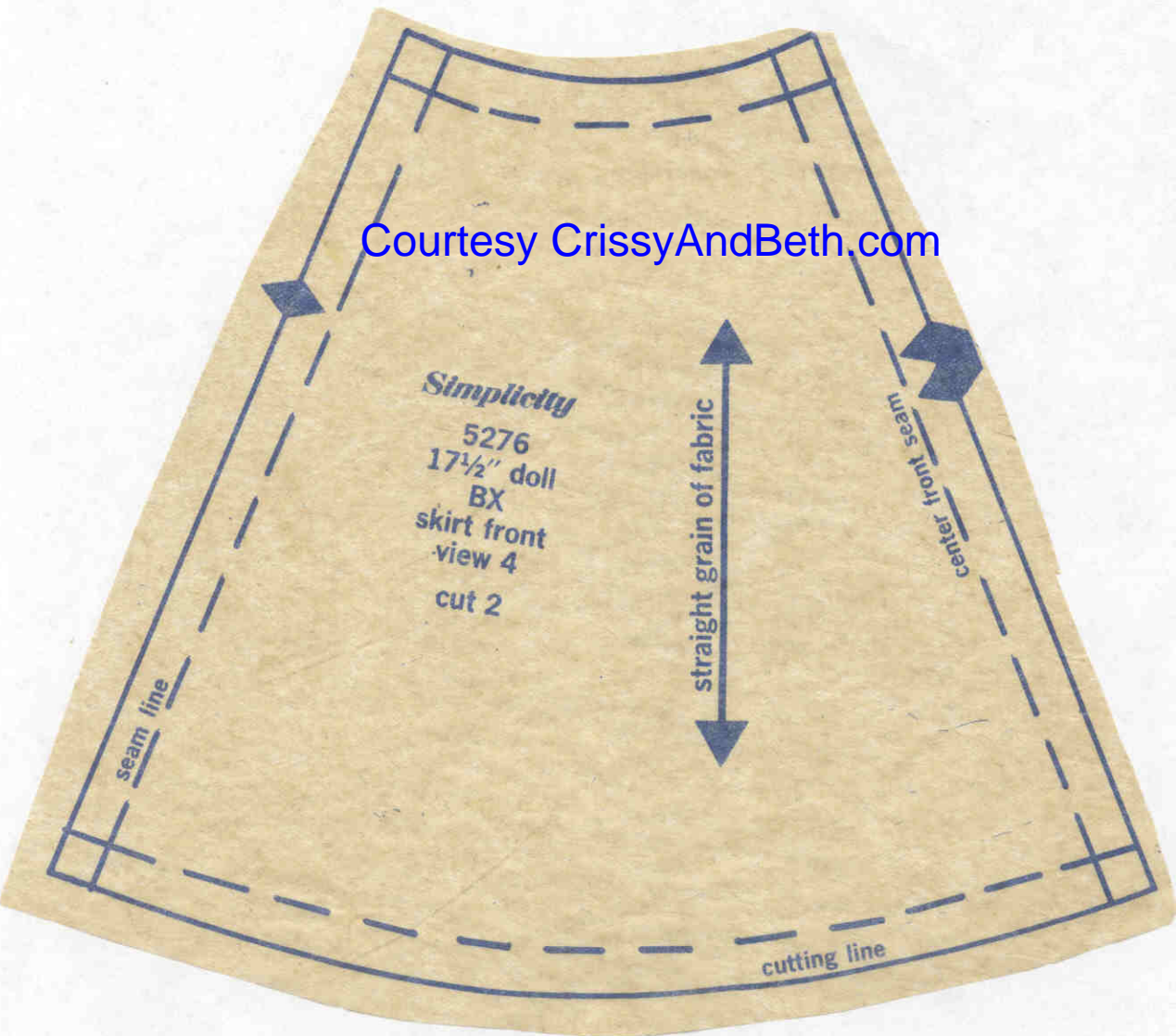


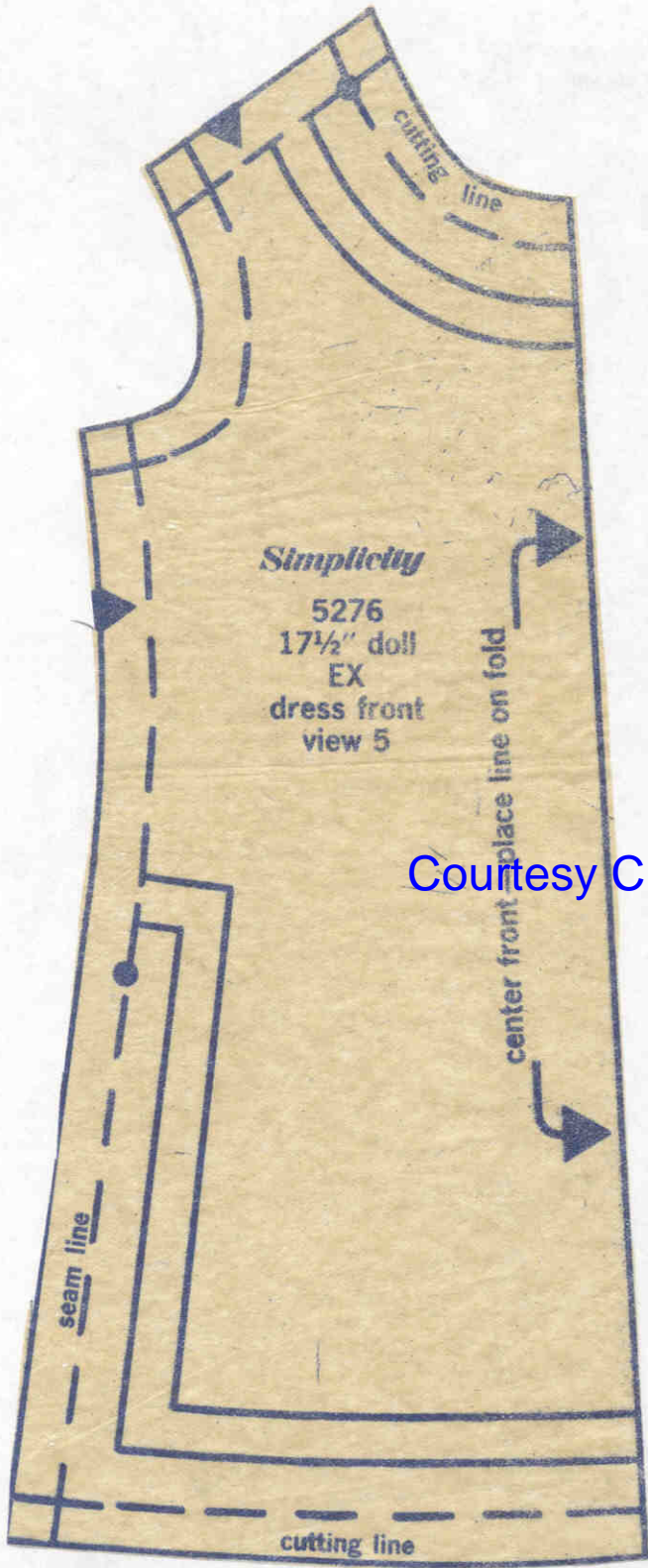


Courtesy CrissyAndBeth.com

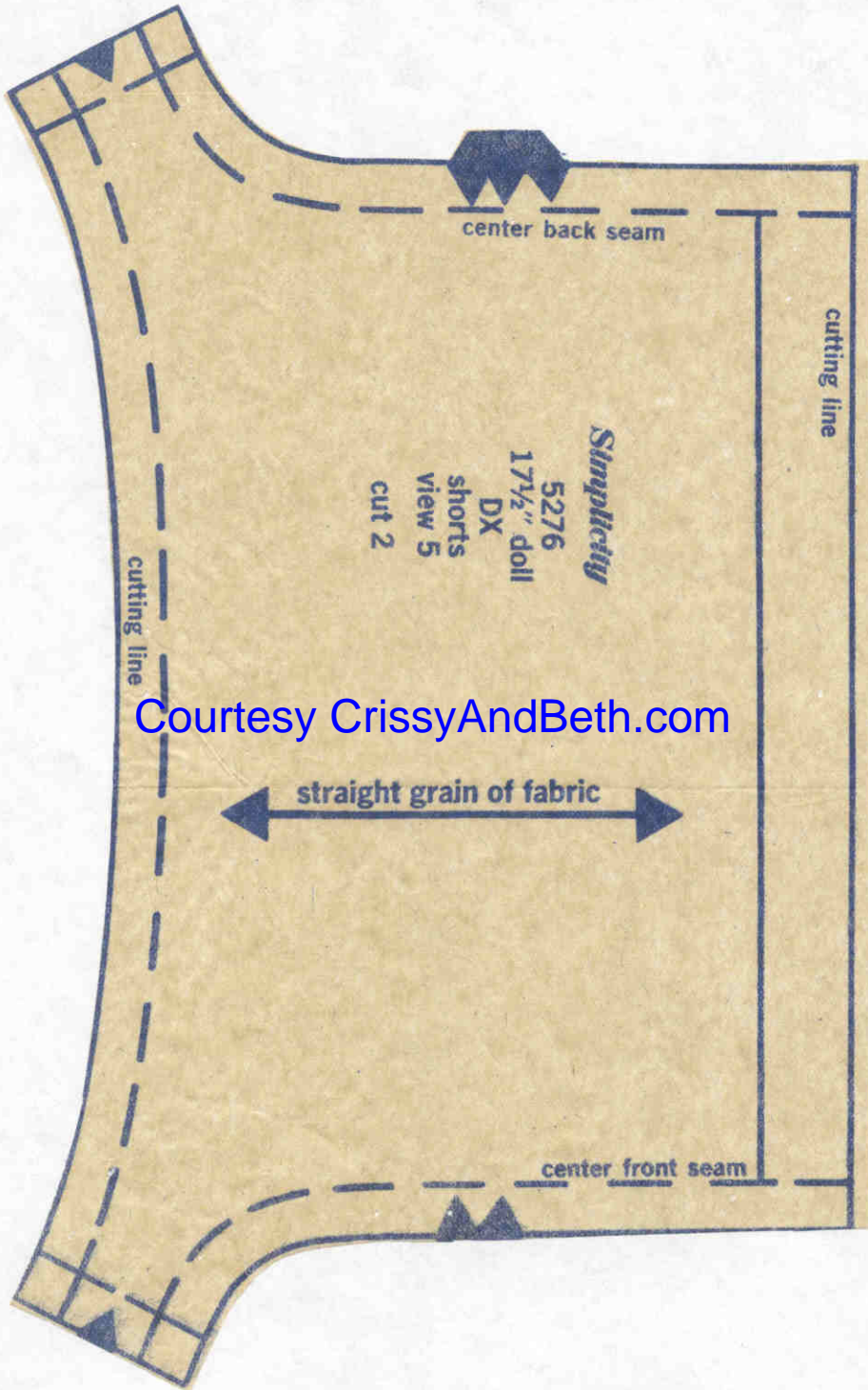


Courtesy CrissyAndBeth.com





Courtesy CrissyAndBeth.com



Courtesy CrissyAndBeth.com

This piece is continued on next page.

seam line

cutting line

clip

Courtesy CrissyAndBeth.com

Simplicity
5276
17½" doll
GX
dress view 6

center front — place line on fold



center back seam



Courtesy CrissyAndBeth.com

cutting line