

# Simplicity 5276

cutting and  
sewing directions

select pattern pieces  
for your view  
23 pieces given

**VIEW 1**  
9 pieces  
blouse  
A, B, C, D  
pants - E, F  
jacket  
G, H, K

**VIEW 2**  
6 pieces  
pants  
E, F  
top  
L, M, N, P

**VIEW 3**  
5 pieces  
blouse  
A, B, C, D  
pantskirt  
R

**VIEW 4**  
5 pieces  
dress  
S, T, AX,  
BX, CX

**VIEW 5**  
3 pieces  
shorts  
DX  
dress  
EX, FX

**VIEW 6**  
1 piece  
dress - GX

**VIEW 1**  
jacket view 1  
K sleeve  
J back  
G front

**VIEW 2**  
top view 2  
P sleeve  
N collar  
L front  
M back

**VIEW 3**  
pantskirt view 3  
R

**VIEW 4**  
dress view 4  
I AX sleeve  
S bodice front  
T bodice back  
skirt front  
skirt back  
CX

**VIEW 5**  
dress view 5  
FX back  
EX front

**VIEW 6**  
dress view 6  
GX

**FRONT AND BACK**  
1 2  
3  
4  
5  
6

**FRONT AND BACK**  
1  
2  
3

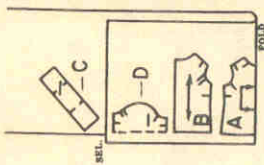
Courtesy CrissyAndBeth.com

# cutting layouts

Disregard any perforations on tissue pattern pieces.

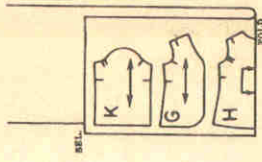
**VIEW 1**

## blouse



35" 36"  
(90cm),  
44" 45"  
(115cm)  
fabric  
with or  
without nap  
all sizes

## jacket



35" 36"  
(90cm),  
44" 45"  
(115cm)  
fabric  
with or  
without nap  
all sizes

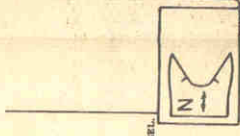
**VIEW 2**

## top



35" 36"  
(90cm),  
44" 45"  
(115cm)  
fabric  
with or  
without nap  
all sizes

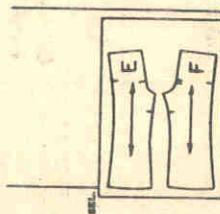
## contrasting collar



35" 36"  
(90cm),  
44" 45"  
(115cm)  
fabric  
with or  
without nap  
all sizes

**VIEW 1**

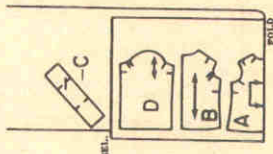
## pants



35" 36"  
(90cm),  
44" 45"  
(115cm)  
fabric  
with or  
without nap  
all sizes

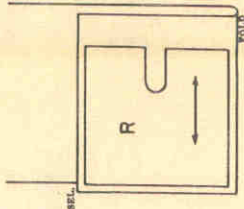
**VIEW 3**

## blouse



35" 36"  
(90cm),  
44" 45"  
(115cm)  
fabric  
with or  
without  
nap  
all sizes

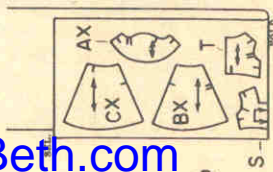
## pantskirt



35" 36"  
(90cm),  
44" 45"  
(115cm)  
fabric  
with or  
without nap  
all sizes

**VIEW 4**

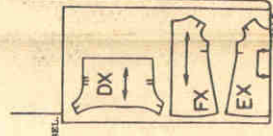
## dress



35" 36"  
(90cm),  
44" 45"  
(115cm)  
fabric  
with or  
without nap  
all sizes

**VIEW 5**

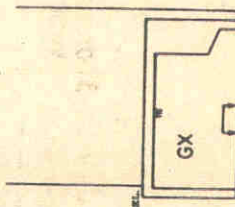
## dress and shorts



35" 36"  
(90cm),  
44" 45"  
(115cm)  
fabric  
with or  
without nap  
all sizes

**VIEW 6**

## dress



35" 36"  
(90cm),  
44" 45"  
(115cm)  
fabric  
with or  
without nap  
all sizes

Courtesy CrissyAndBeth.com

The metric equivalent for inches is in parenthesis: 1/4" (6mm), 3/8" (9mm), 7-1/2" (19cm).

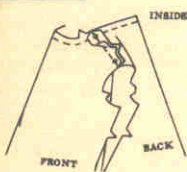
**NOTE:** Stitch 1/4" seams, matching notches. Press seams open, unless otherwise instructed.

**NOTE:** To ease, stitch along seam line, using a long machine-stitch.

**VIEW 1**  
**blouse**

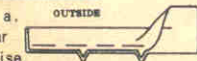
**front and back**

1. Stitch shoulder seams, matching small dots. Stitch along seam line at neck edge.

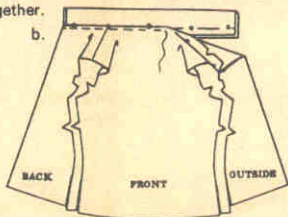


**collar**

2. a—Fold collar in half lengthwise, **WRONG** sides together. Baste raw edges together.



b.

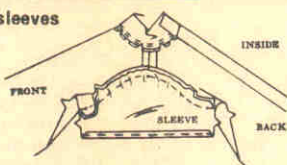


b—Press under neck edge of blouse along stitching; clip curves. Top-stitch neck edge over long raw edge of collar, matching seam lines, centers and small dots.



c—Stitch **RIGHT** back edge to **INSIDE** along center back line.

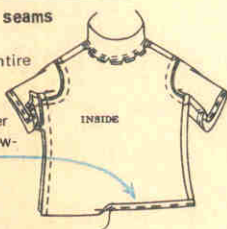
**sleeves**



3. Ease top of sleeve between notches. Stitch under 1/4" on lower edge. With **RIGHT** sides together, pin sleeve to armhole edge, matching small dots. Pull up stitching to fit. Stitch. Press seam toward sleeve.

**underarm seams**

4. Stitch entire underarm seams. Stitch under 1/4" on lower edge.

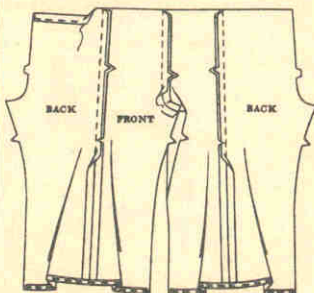


**finishing**

5. Lap **RIGHT** back over **LEFT**, matching centers; fasten with snaps.

**VIEW 1**  
**pants**

**front, back and casing**



1. Stitch center front seam. Clip curves. Stitch front to back at side seams. Clip curves. Stitch under 1/4" on leg edges. To form casing, press upper edge to **INSIDE** along solid line. Stitch 3/8" from fold.

**elastic and seams**



2. Cut a piece of elastic 7-1/2" long. Insert elastic thru casing; sew ends. Stitch center back seam. Stitch inner leg seam.

**VIEW 1**  
**jacket**

**front and back**

1. Stitch shoulder seams, matching small dots.



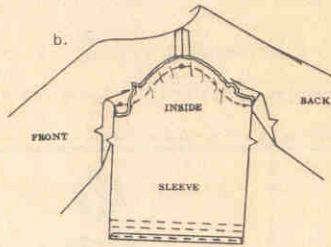
**sleeves**

2. a—Ease top of sleeve between notches. Stitch under 1/4" on lower edge. On **OUTSIDE**, stitch center of middy braid along solid lines.



**DIRECTIONS CONTINUED ON OTHER SIDE**

Courtesy CrissyAndBeth.com



b—With RIGHT sides together, pin sleeve to armhole edge, matching small dots. Pull up stitching to fit. Stitch. Press seam toward sleeve.

**underarm seams**



3. Stitch entire underarm seams. Stitch under 1/4" on lower, front and neck edges, clipping curves.

**finishing**



4. Sew buttons to RIGHT front at small dots. Lap RIGHT front over LEFT, matching centers; fasten with snaps under buttons.

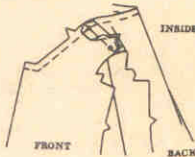


Make pants same as view 1.

**top**

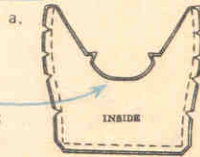
**front and back**

1. Stitch shoulder seams, matching small dots. Stitch along seam line at neck edge.

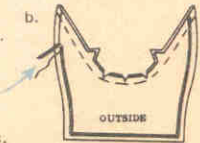


**collar**

2. a—With RIGHT sides together, stitch facing to collar, leaving notched edges open. Trim corners; clip curves.

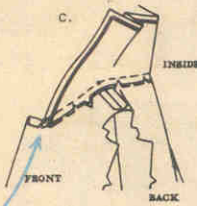


b—Turn collar; press. Baste raw edges together.



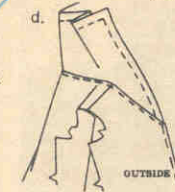
On OUTSIDE, stitch center of middy braid along solid line, folding out fullness at corners.

c. Clip top neck edge to stitching along curves and to medium dots at inner corners. On OUTSIDE, pin collar to neck edge, matching centers and small dots. Stitch. Clip curves. Press seam toward top, pressing under 1/4" on remaining neck edge.



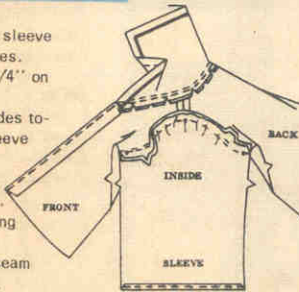
d—Top-stitch close to neck seam under collar.

Stitch RIGHT front edge to INSIDE along center line.



**sleeves**

3. Ease top of sleeve between notches. Stitch under 1/4" on lower edge. With RIGHT sides together, pin sleeve to armhole edge, matching small dots. Pull up stitching to fit. Stitch. Press seam toward sleeve.



**underarm seams**

4. Stitch entire underarm seams. Stitch under 1/4" on lower edge.



**finishing**

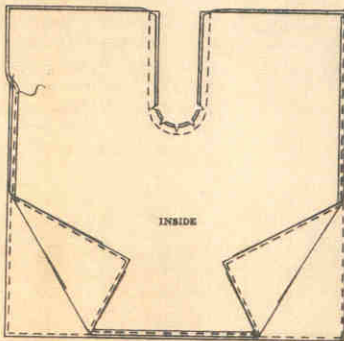
5. Lap RIGHT front over LEFT, matching centers; fasten with snaps. Wear ribbon tie, as shown on front of envelope.



Make blouse same as view 1.

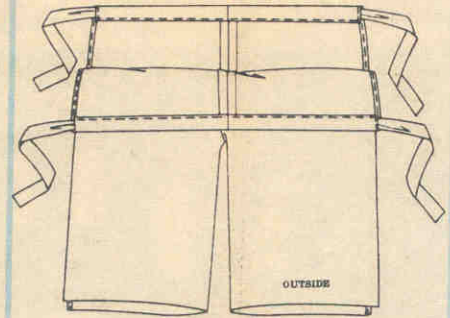
**pantskirt**

**preparing pantskirt**



1. Stitch under 1/4" on side and lower edges of both pantskirt sections. Place the two sections together with RIGHT sides together. Stitch the curved center seam. Clip curves.

**casings and drawstrings**



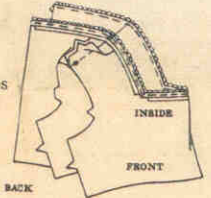
2. Open out pants and hold as shown. To form casing on each section, press upper edges to INSIDE along solid lines. Stitch 3/8" from fold. Cut ribbon for drawstring in half. Insert ribbon thru each casing, having ends extend evenly. To wear pantskirt, bring side edges of front to back; tie drawstring. Lap side edges of back over front; tie drawstring at center front, as shown on front of envelope.



**dress**

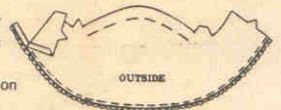
**bodice front and back**

1. Stitch shoulder seams, matching small dots. Press under 1/4" on neck edge, clipping curves and small dots at inner corners. Stitch neck edge over straight edge of picot edging.

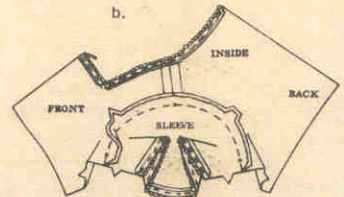


**sleeves**

2. a—Ease top of sleeve between notches. Press under 1/4" on lower edge. Stitch lower edge over straight edge of picot edging.

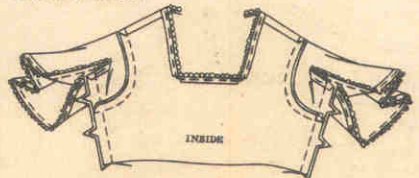


b.



b—With RIGHT sides together, pin sleeve to armhole edge, matching small dots. Pull up stitching to fit. Stitch. Press seam toward sleeve.

**underarm seams**

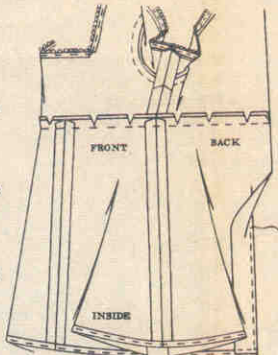


3. Stitch entire underarm seams.

Courtesy CrissyAndBeth.com

**skirt front and back and seams**

4. Stitch center front and side seams of skirt. With RIGHT sides together, pin skirt to bodice, matching centers and sides. Stitch. Clip curves. Press seam up, Stitch under 1/4'' on lower edge. Stitch RIGHT back edge to INSIDE along center line.

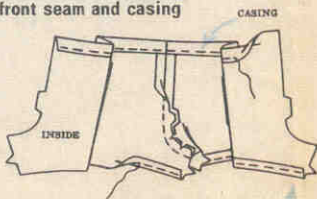


**finishing**

1. Lap RIGHT back over LEFT, matching centers; fasten with snaps.

**VIEW 5 shorts**

**center front seam and casing**

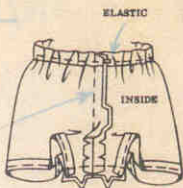


1. Stitch center front seam. Clip curves. Stitch under 1/4'' on leg edges.

To form casing, press upper edge to INSIDE along solid line. Stitch 3/8'' from fold.

**elastic and seams**

2. Cut a piece of elastic 7-1/2'' long. Insert elastic thru casing; sew ends. Stitch center back seam. Clip curves. Stitch inner leg seam.

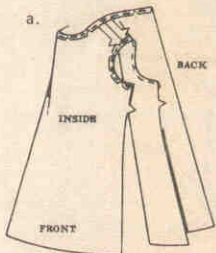


**VIEW 5 dress**

**front and back**

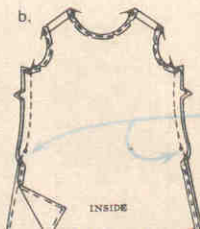
1. a—Stitch shoulder seams, matching small dots.

Stitch under 1/4'' on neck and armhole edges, clipping curves.



b—Stitch side seams above small dot.

Stitch under 1/4'' on lower and side opening edges.



**rick-rack trim**

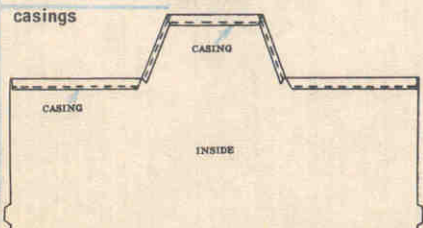
2. On OUTSIDE, pin one color rick-rack along the inner solid lines; pin second color rick-rack along the outer solid lines. Stitch along center of rick-rack. Stitch RIGHT back opening edge to INSIDE along center line.



**finishing**

Lap RIGHT back over LEFT, matching centers; fasten with snaps.

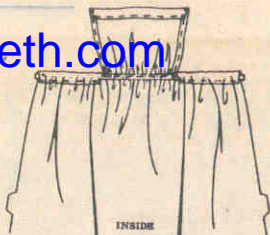
**casings**



1. Clip to small dots at inner corners. Stitch under 1/4'' on edges above clips. Form neck and waistline casings as follows: Press edges to INSIDE along solid line; Stitch 3/8'' from fold.

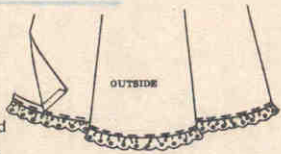
**elastic**

2. Cut a piece of elastic 7-1/2'' long for waistline casing. Insert elastic thru waist casings, as shown. Sew ends. Pin elastic across dress. Stitch along center of elastic between casings, stretching elastic while stitching.



**eyelet edging**

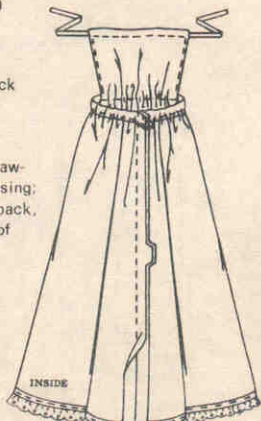
3. Press under 1/4'' on lower edge. Stitch lower edge over bound edge of edging.



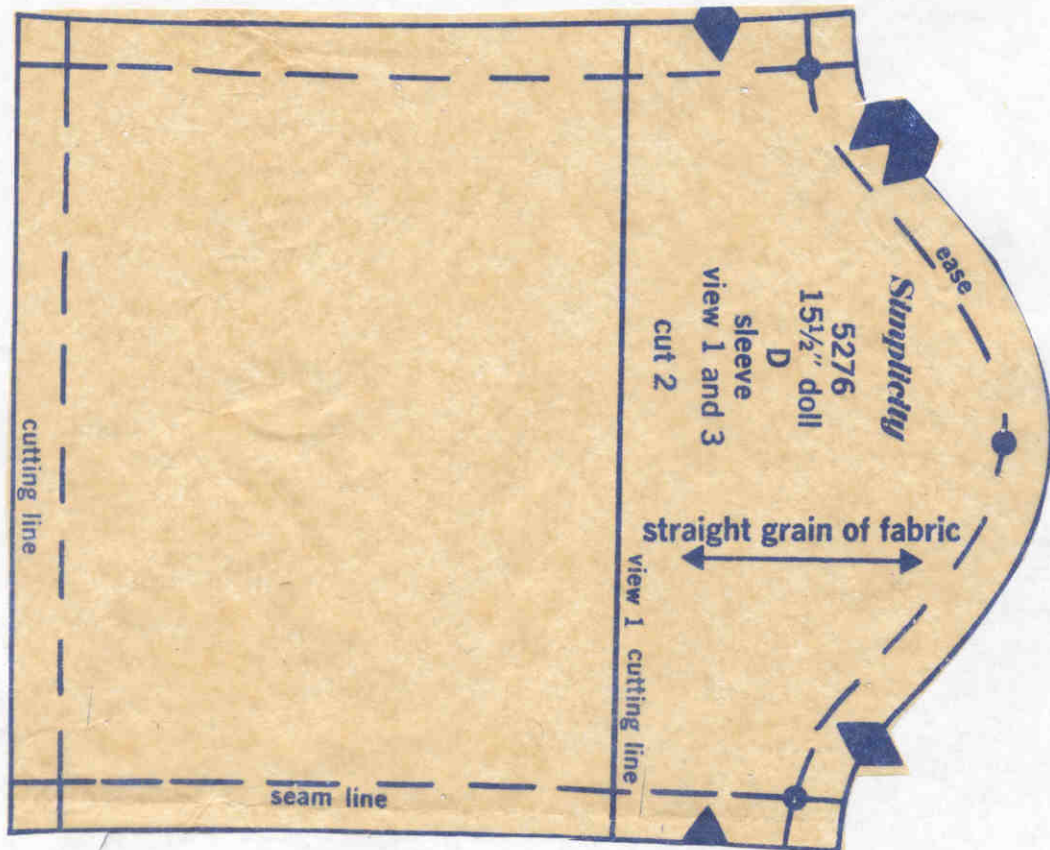
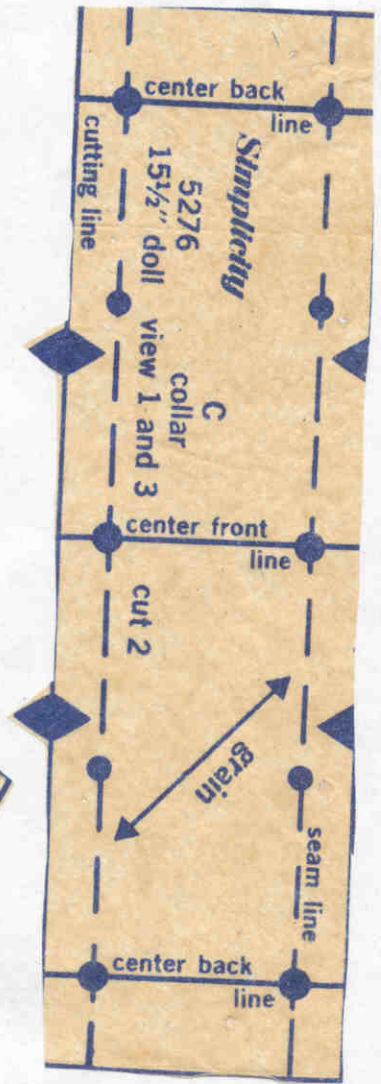
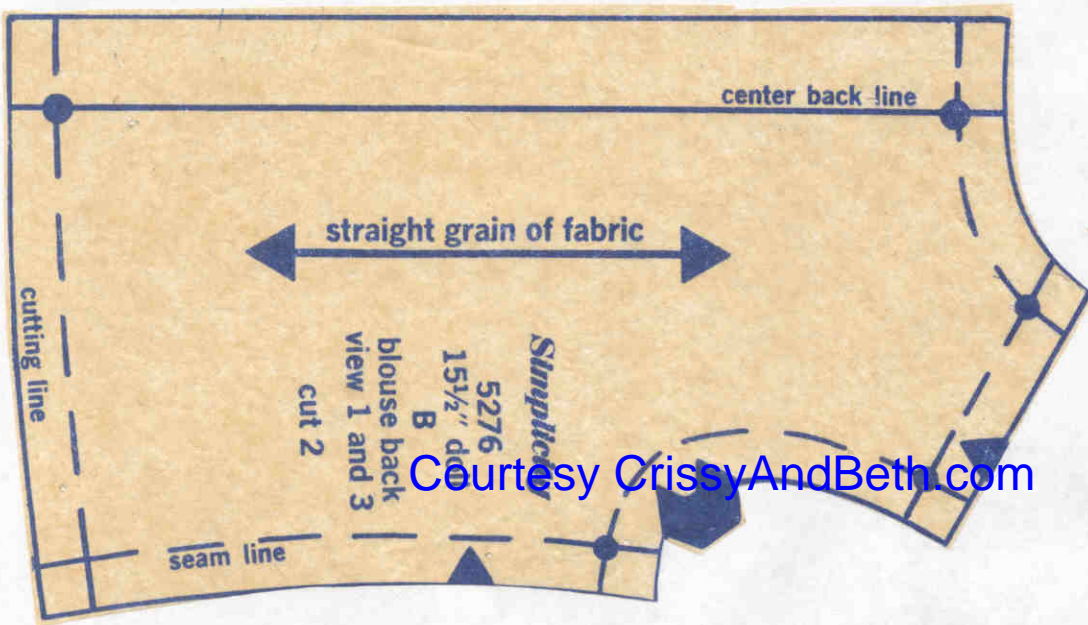
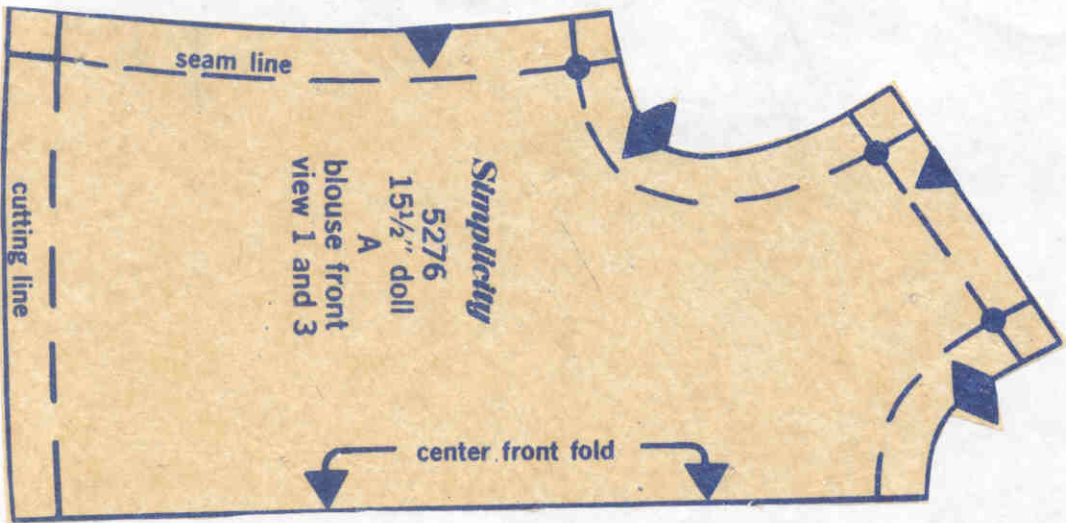
**center back seam and finishing**

4. Stitch center back seam.

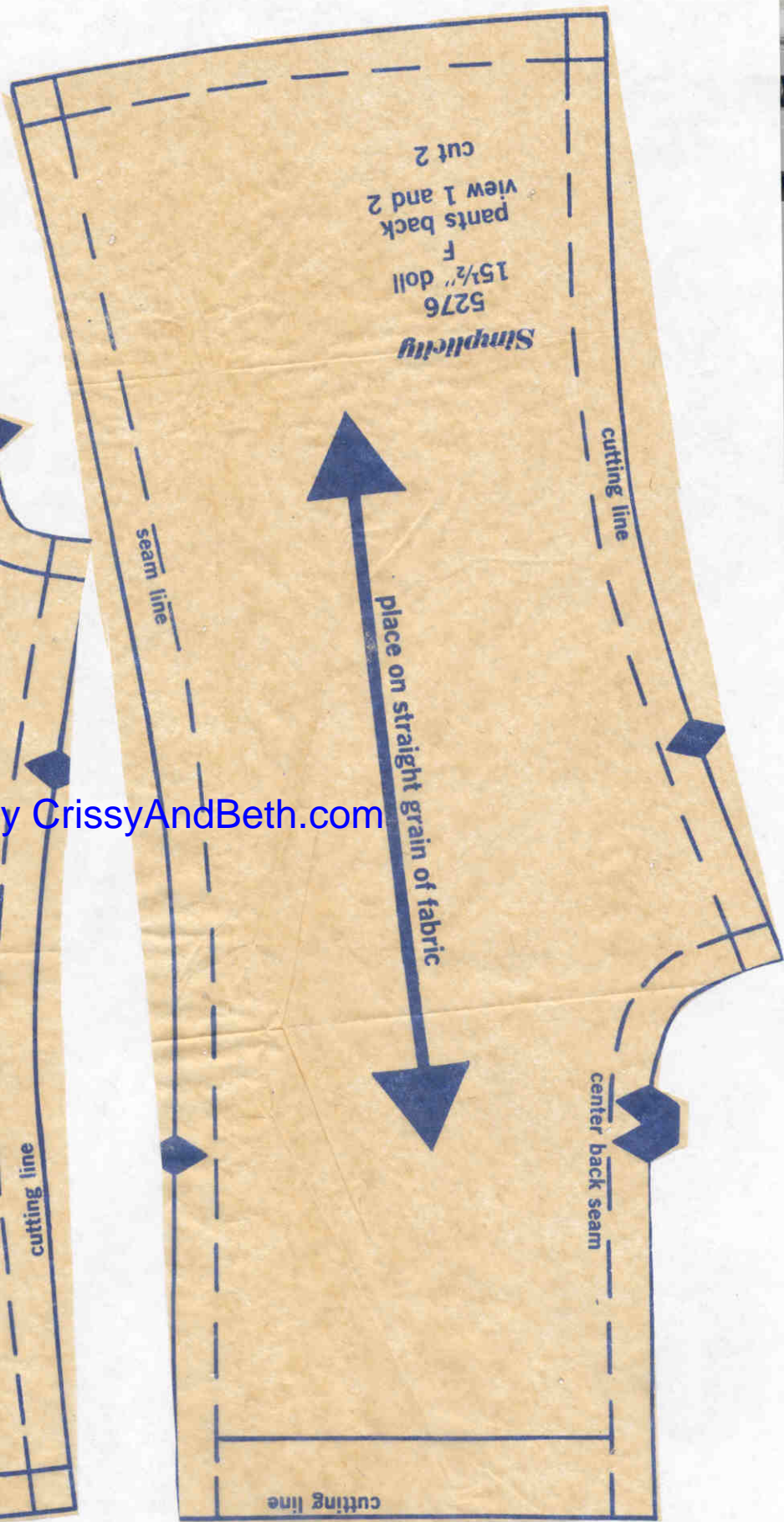
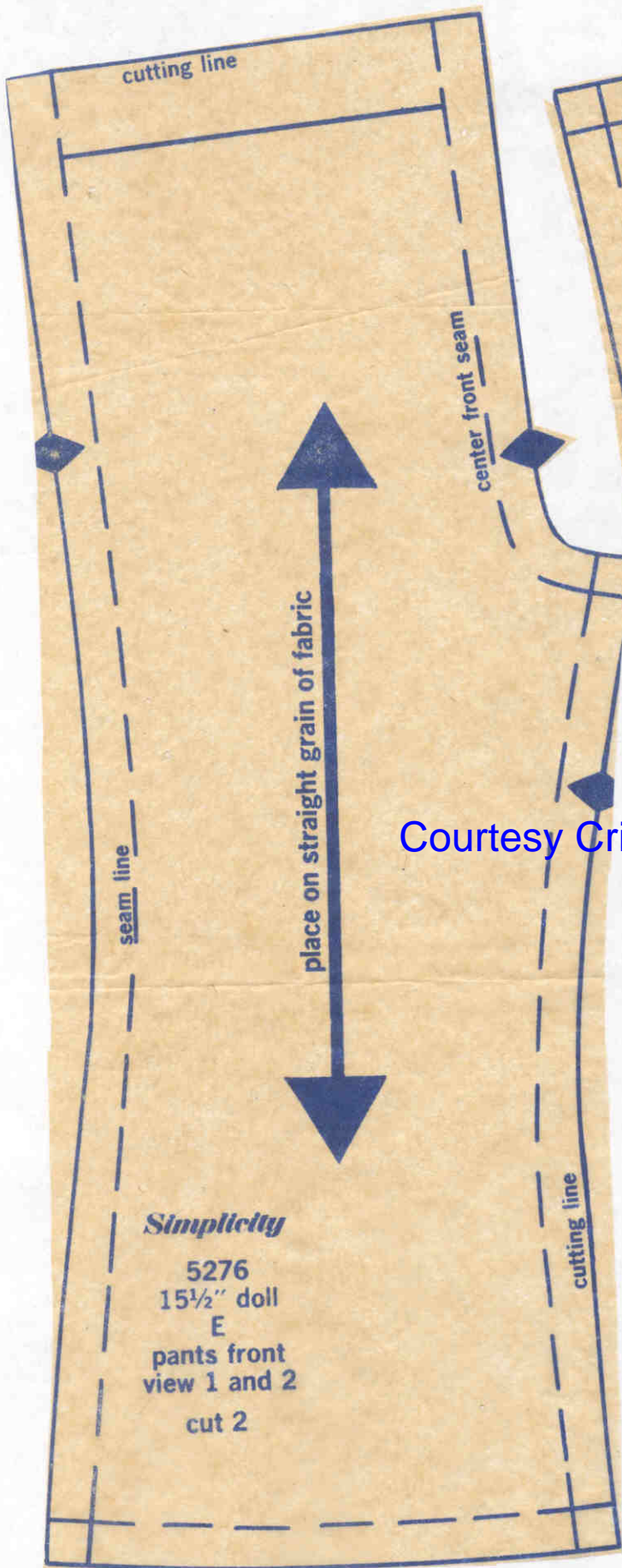
Insert ribbon for drawstring thru neck casing; tie ends at center back, as shown on front of envelope.



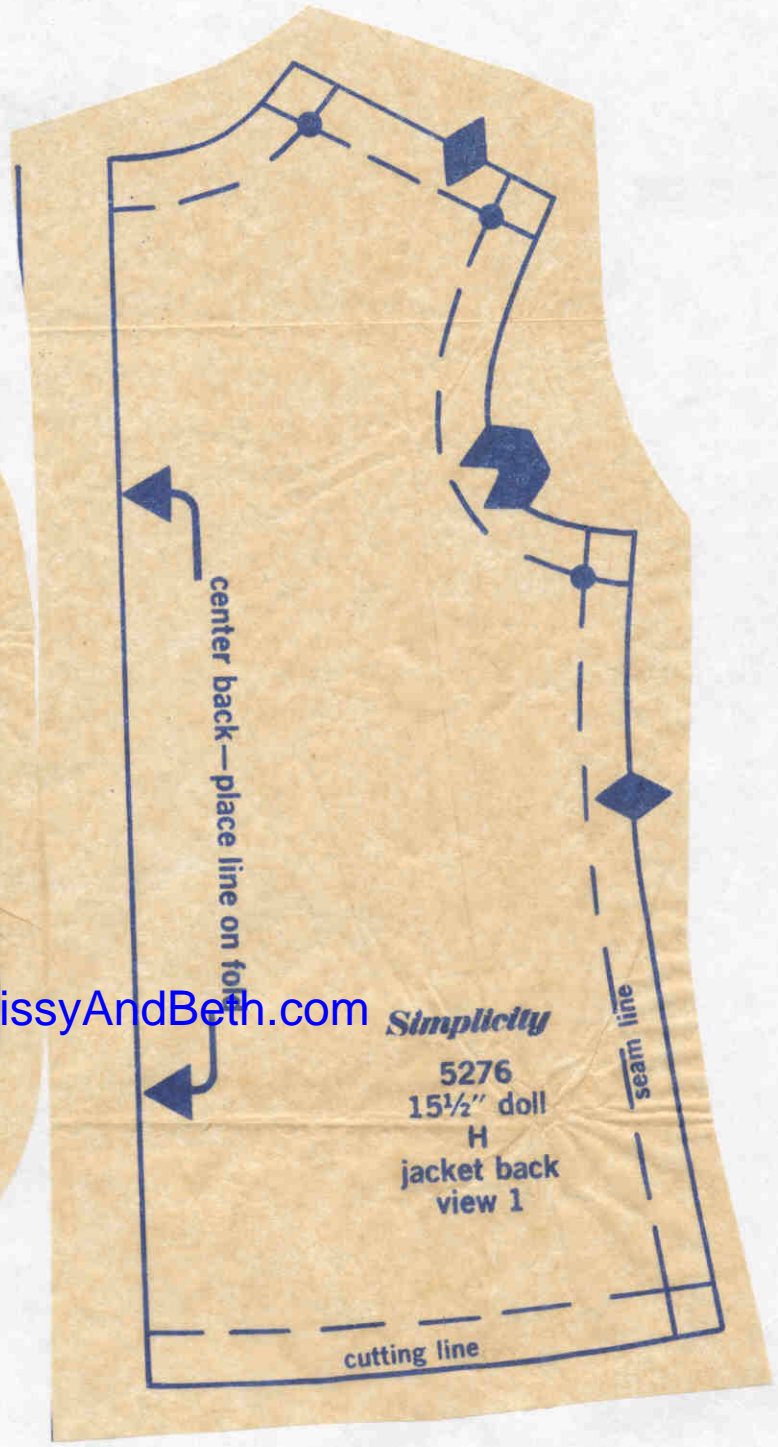
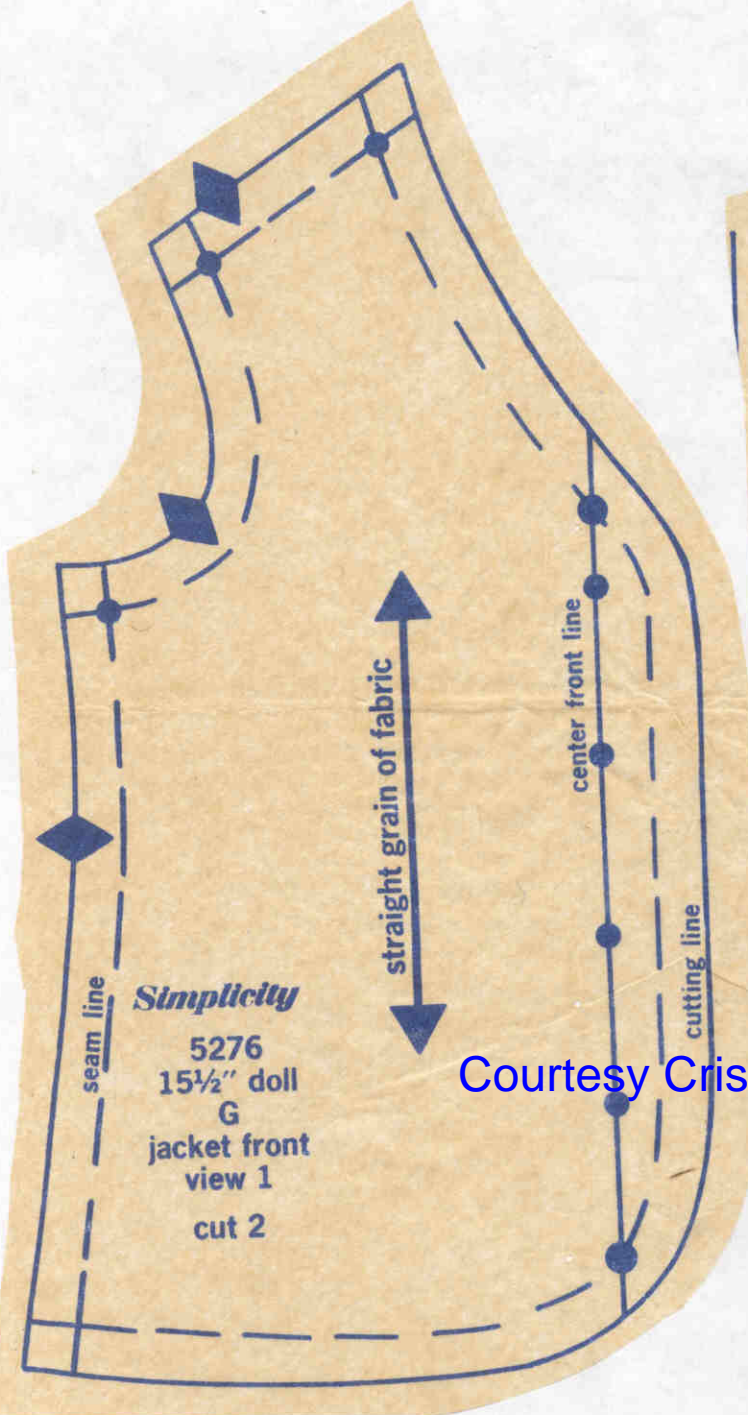
Courtesy CrissyAndBeth.com



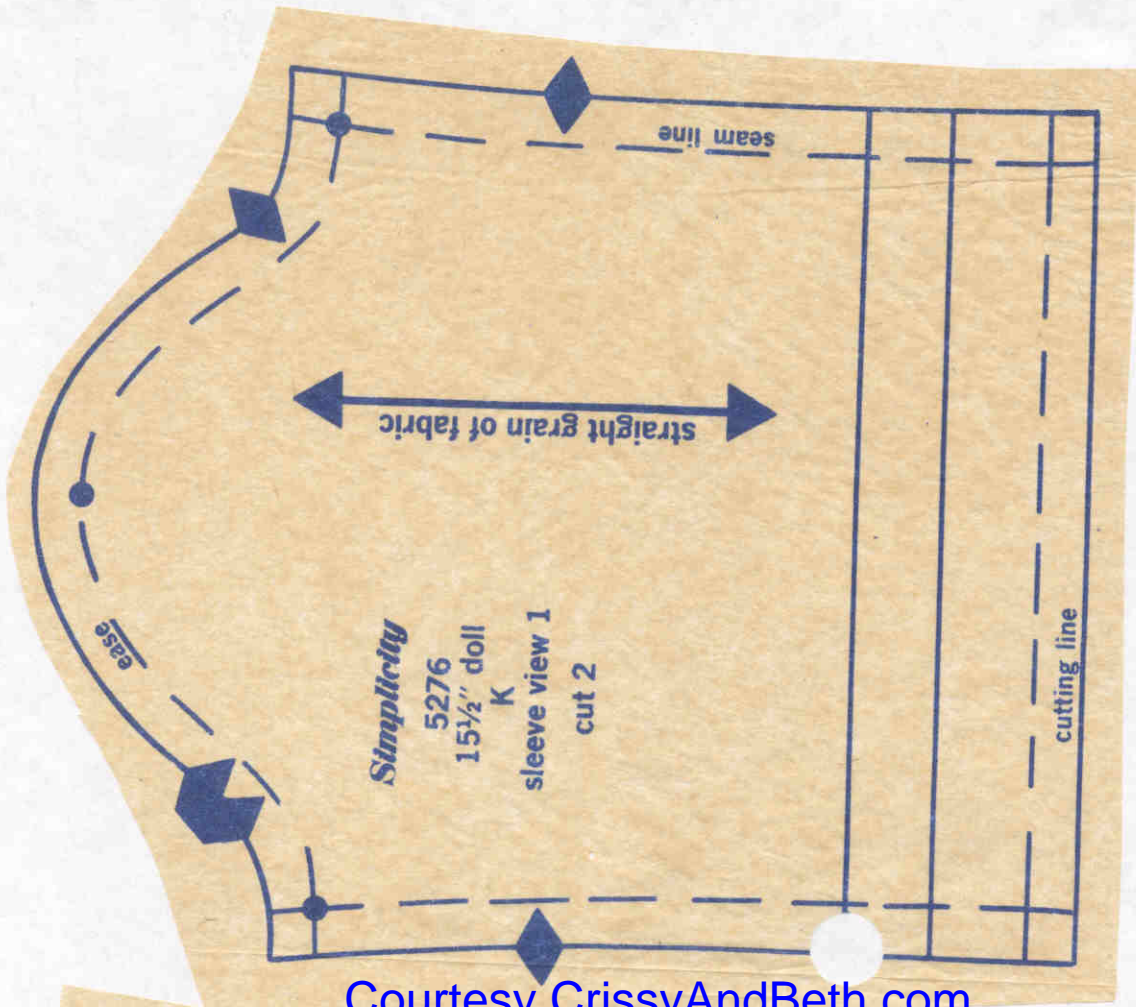
Courtesy CrissyAndBeth.com



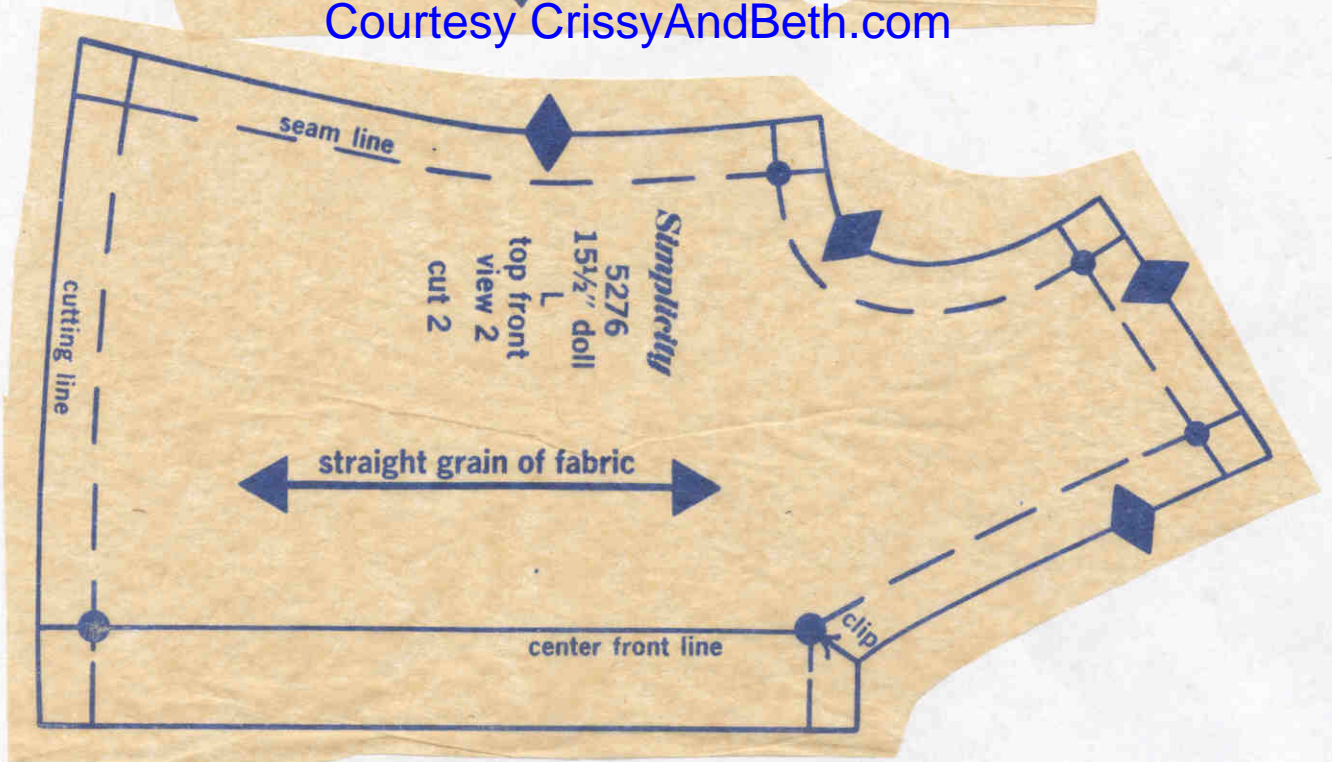
Courtesy CrissyAndBeth.com

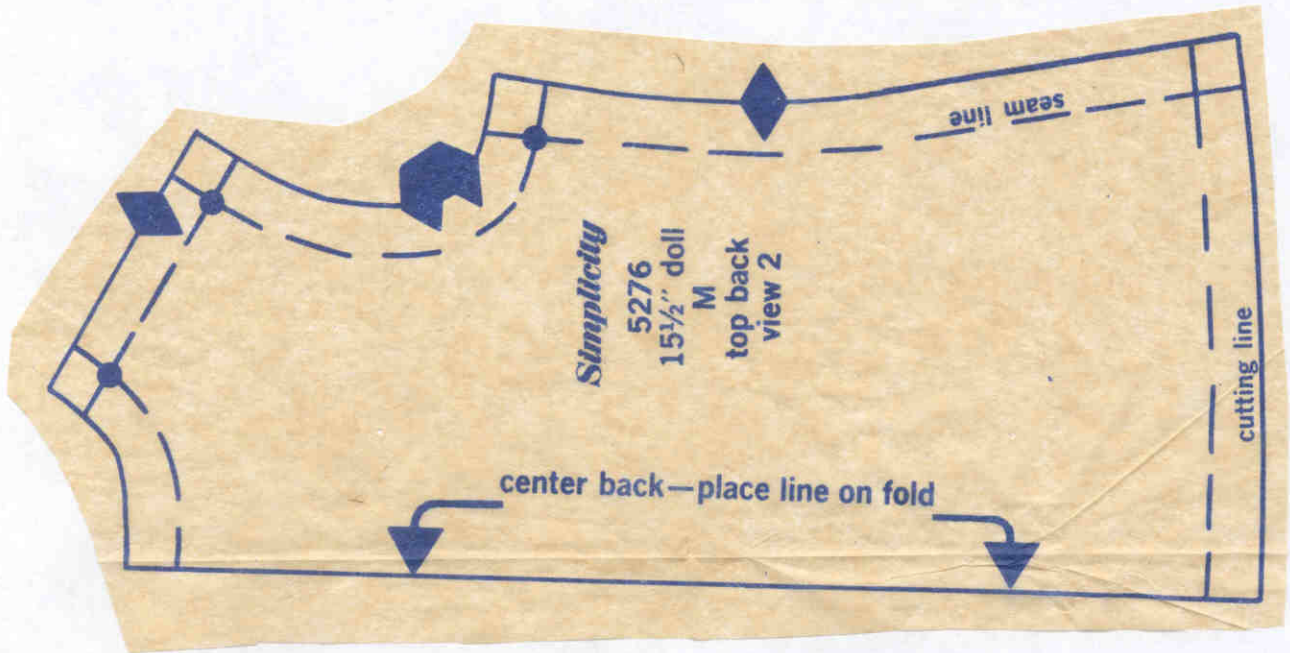
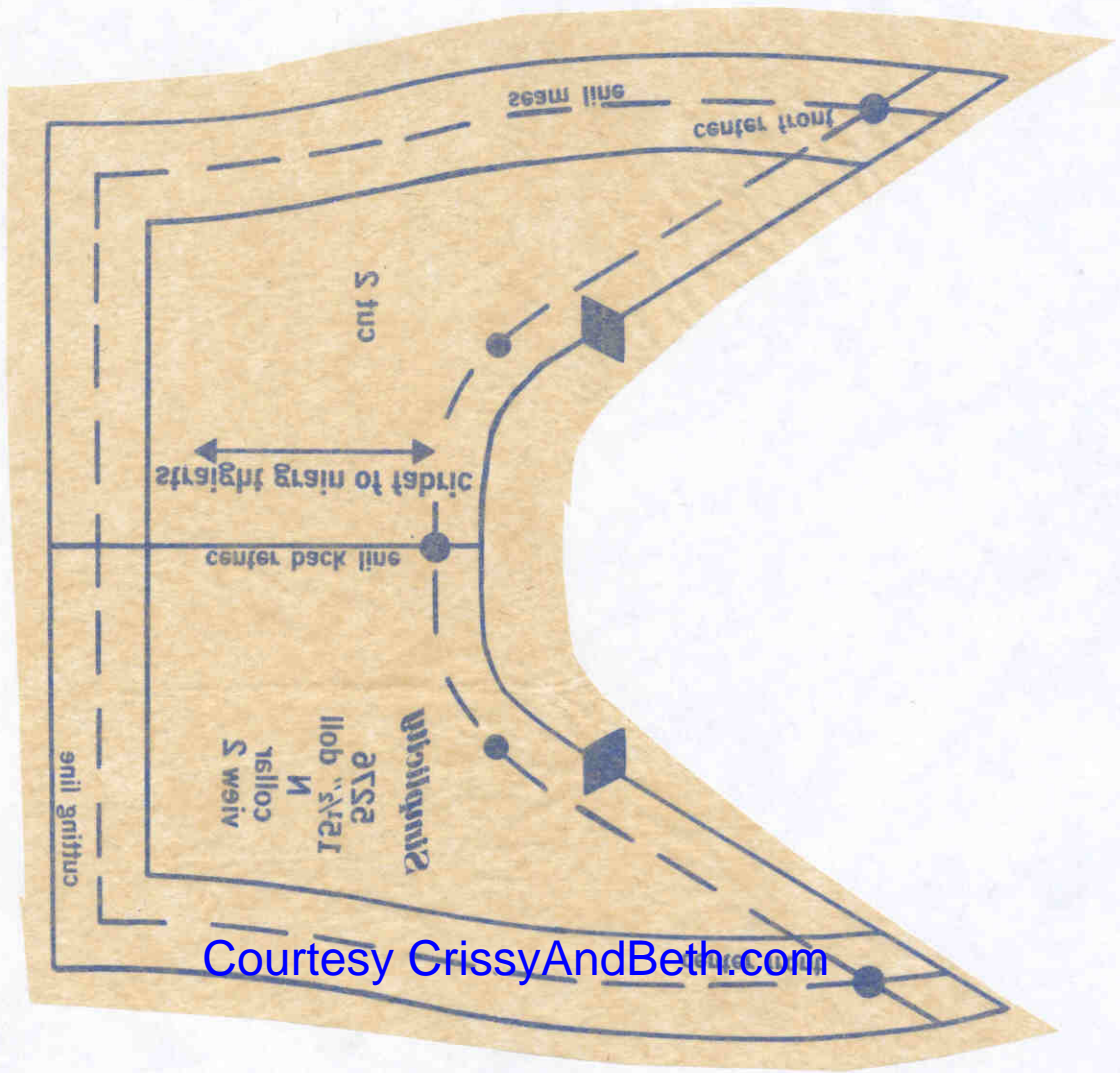


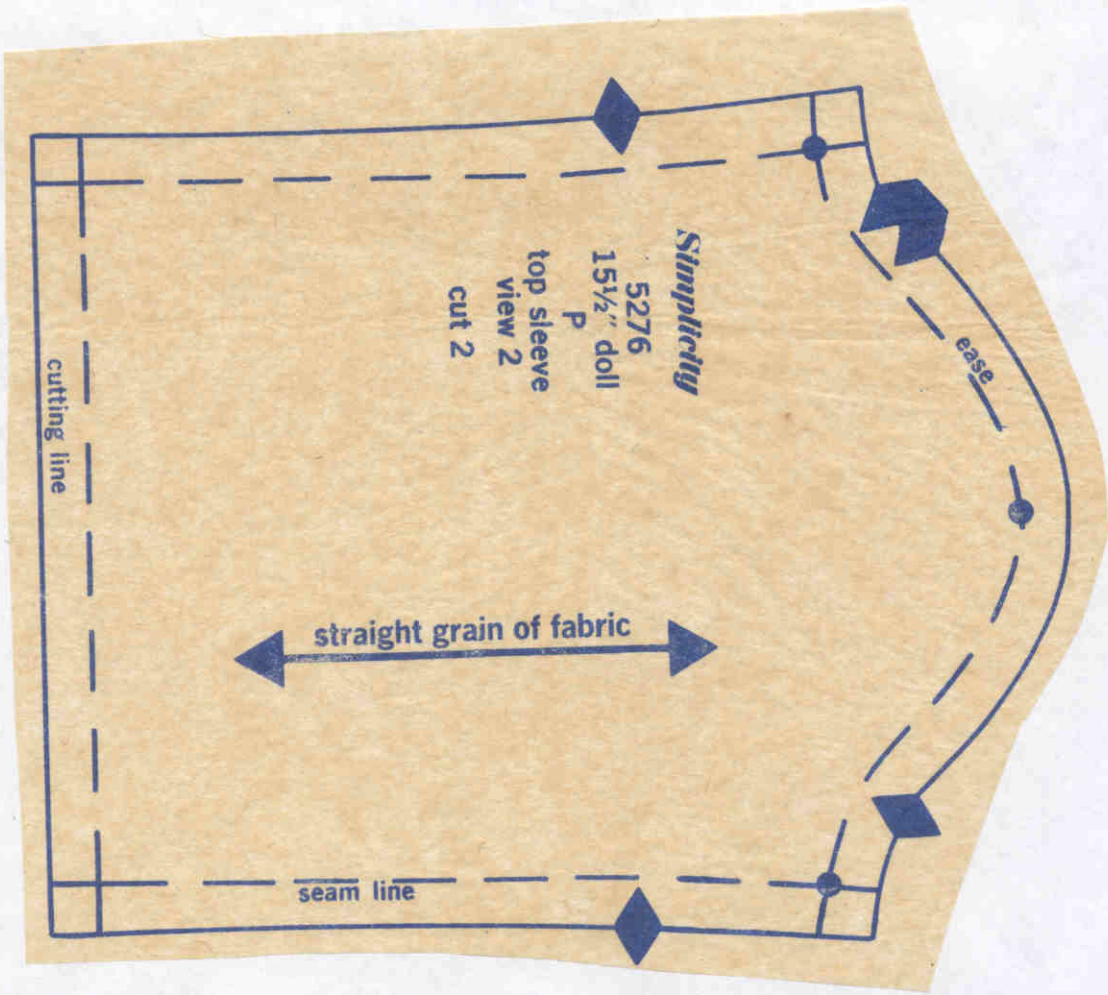
Courtesy CrissyAndBeth.com



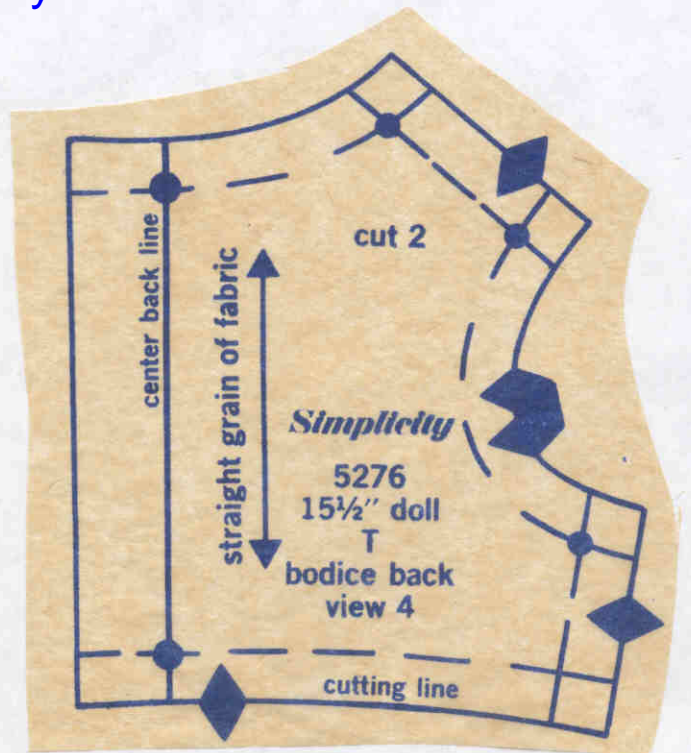
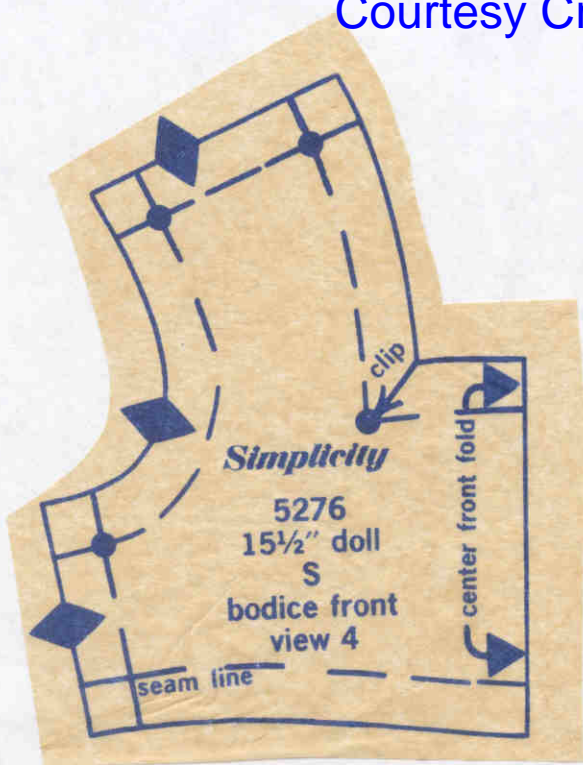
Courtesy CrissyAndBeth.com

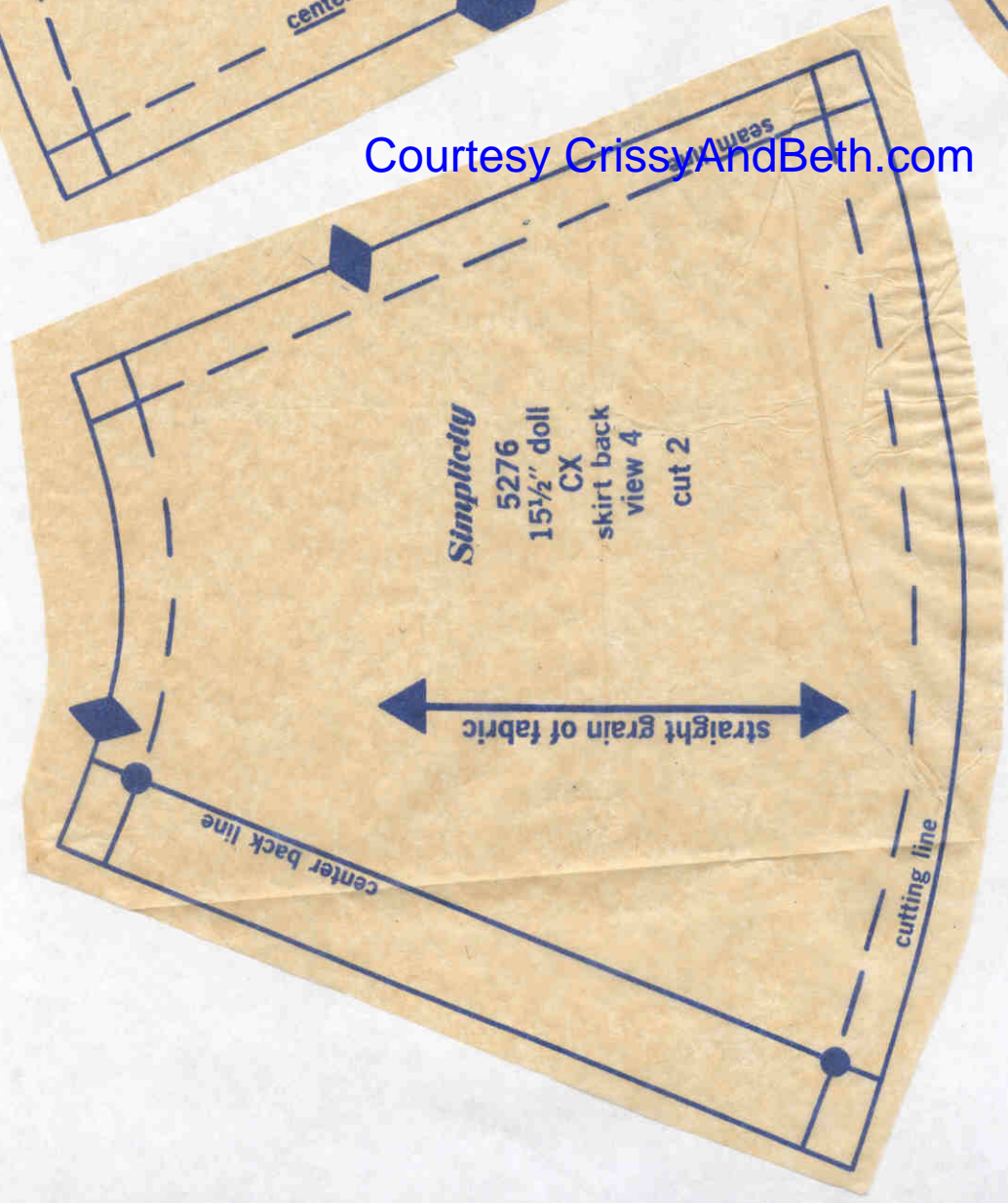
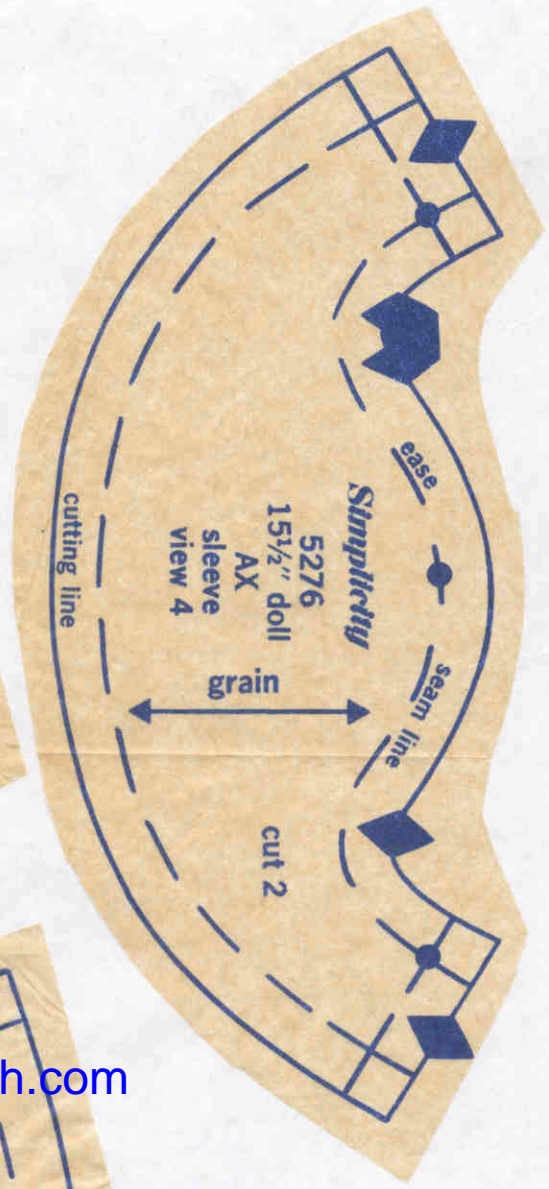
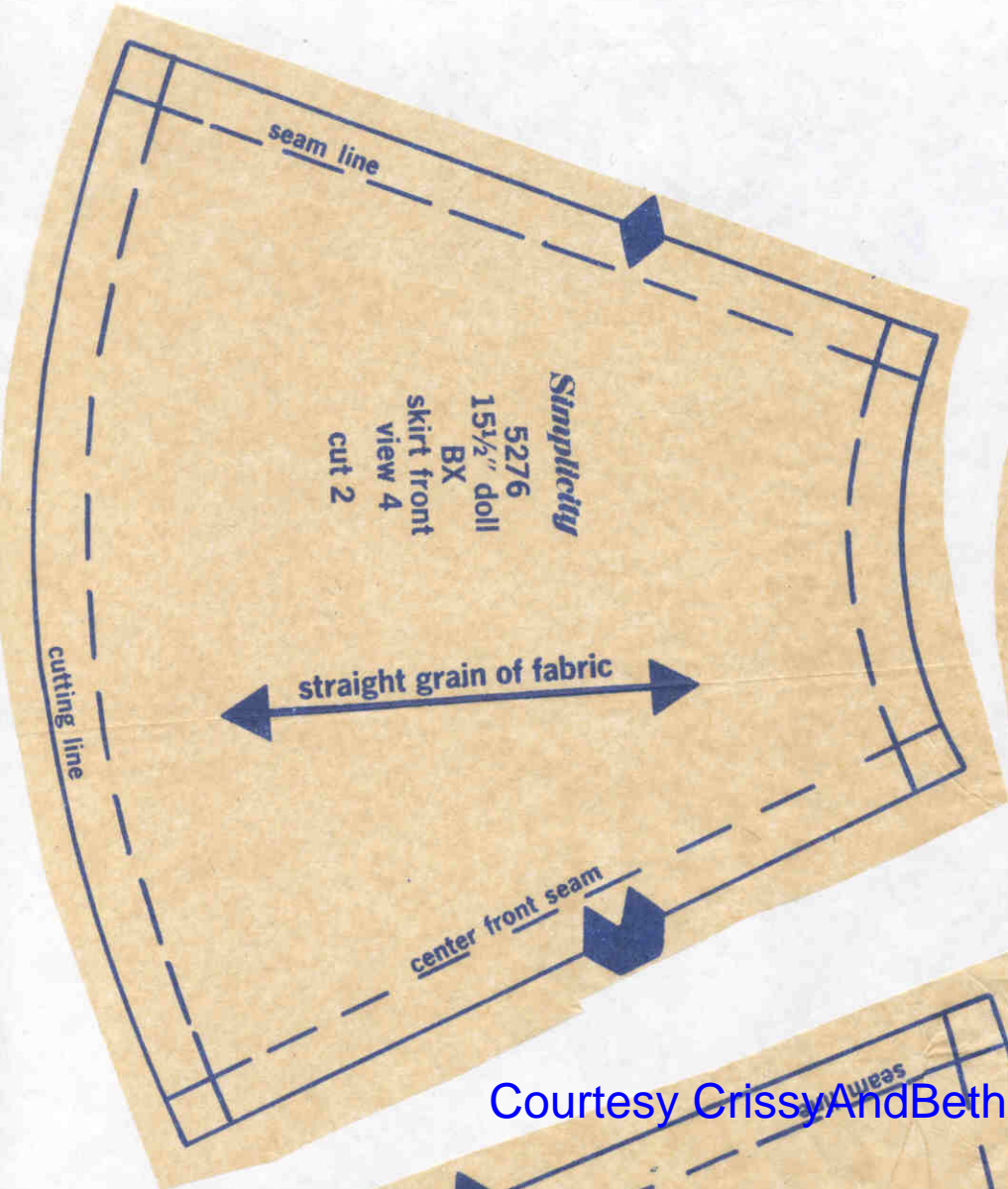






Courtesy CrissyAndBeth.com





Courtesy CrissyAndBeth.com

*Simplicity*  
5276  
15½" doll  
R  
pantskirt view 3  
cut 2

Courtesy [CrissyAndBeth.com](http://CrissyAndBeth.com)

This piece is continued on next page.

cutting line

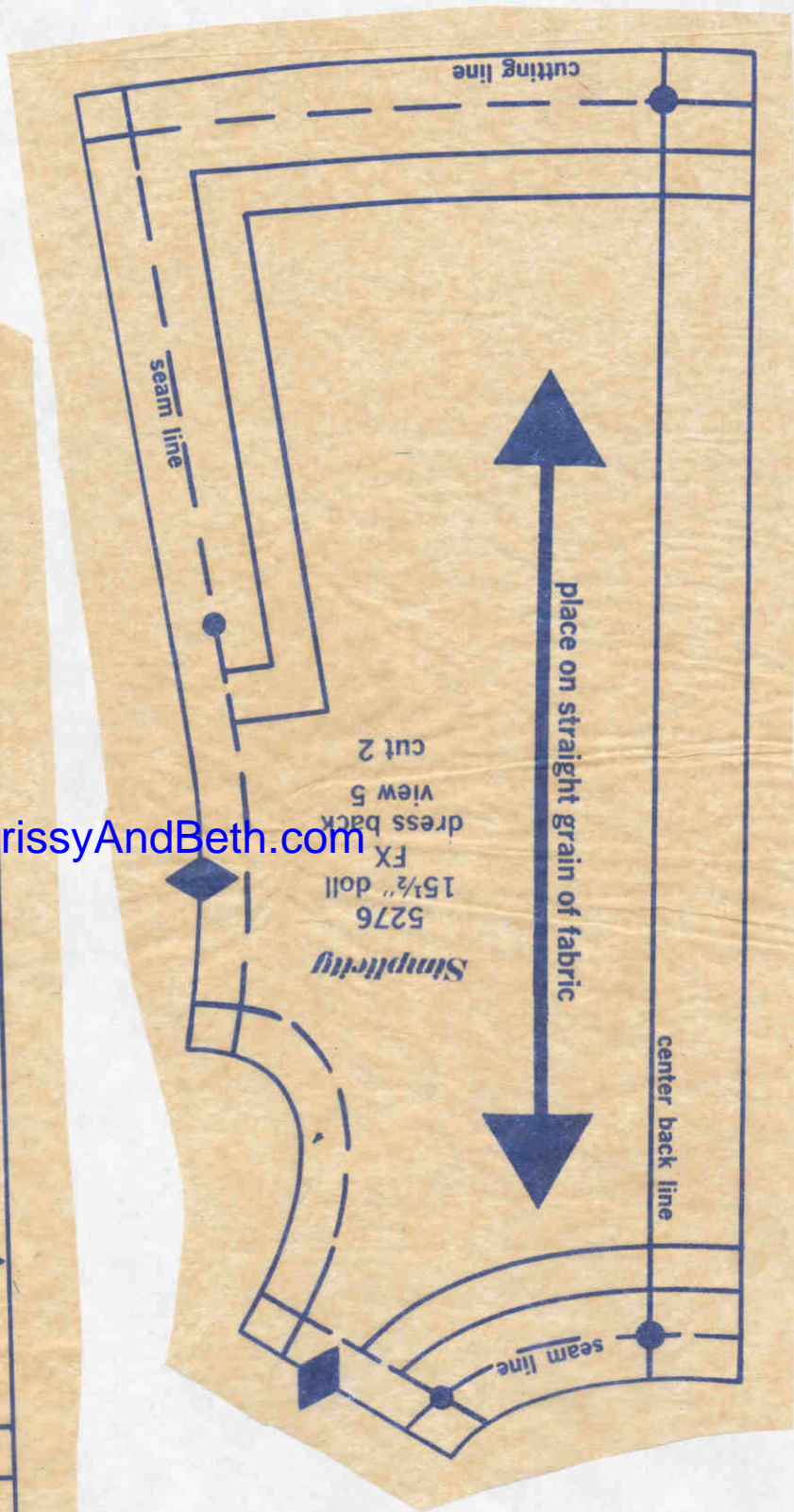
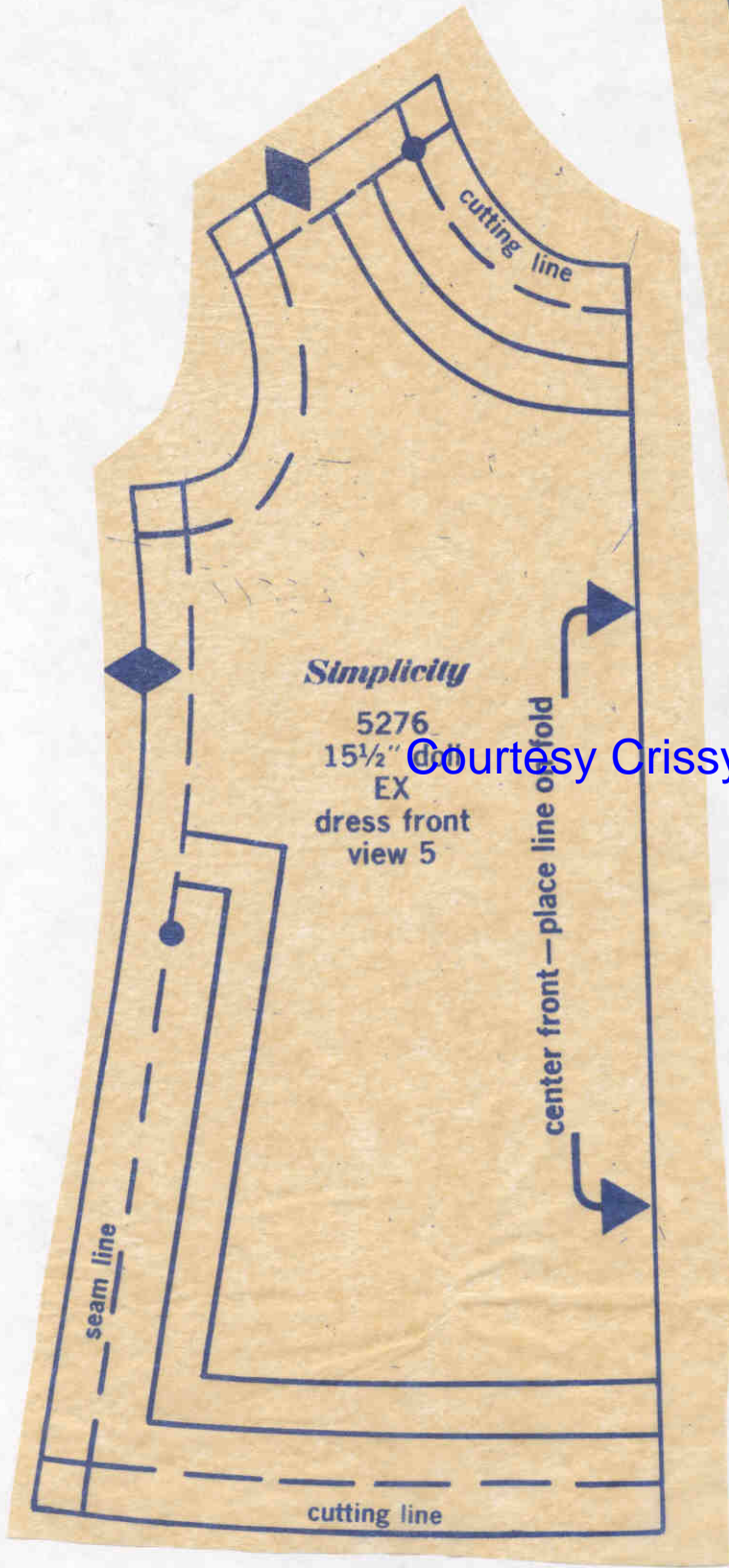
center seam



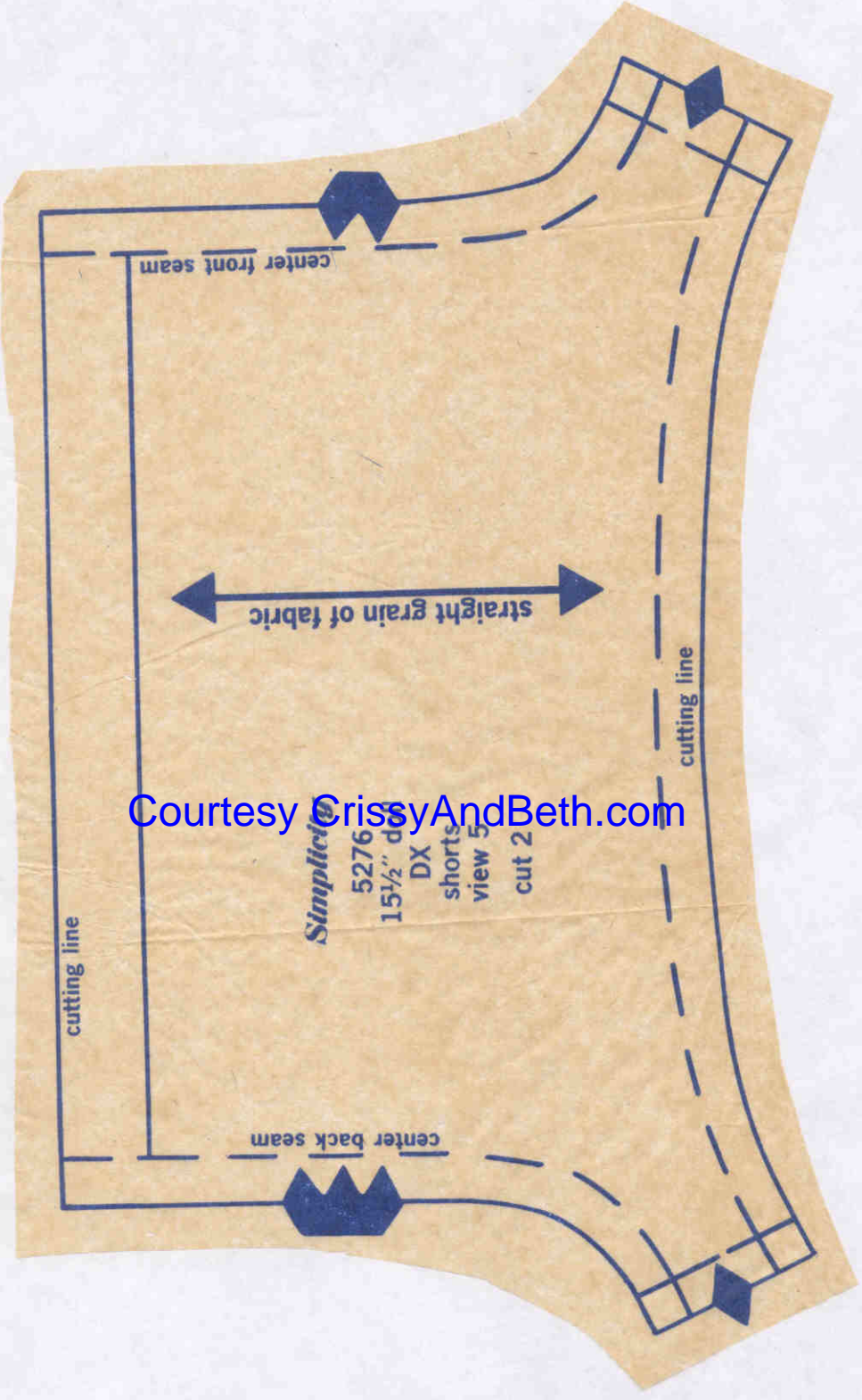
place on straight grain of fabric

Courtesy [GrissyAndBeth.com](http://GrissyAndBeth.com)

cutting line



Courtesy CrissyAndBeth.com



Courtesy CrissyAndBeth.com

*Simplicity*  
5276  
15 1/2" d  
DX  
shorts  
view 5  
cut 2

cutting line

clip

seam line

*Simplicity*  
5276  
15½" doll  
GX  
dress view 6

Courtesy CrissyAndBeth.com

center front—place line on fold

center back seam

cutting line