

# Simplicity 6061

cutting and sewing directions

# select pattern pieces for your view

24 pieces given

**VIEW 1**  
5 pieces dress  
A, B, C, D, E

**VIEW 2**  
4 pieces  
F, G, H, K

**VIEW 3**  
4 pieces  
top L, M  
pants N, P

**VIEW 4**  
6 pieces  
jacket R, S, T, AX  
pants BX, CX

**VIEW 5**  
3 pieces  
top FX  
pants GX, HX

**VIEW 6**  
5 pieces  
jacket R, S, T, DX  
shorts EX

**dress view 1**  
E sleeve  
B bodice front  
C skirt front  
D back

**dress view 2**  
F bodice front  
G skirt front  
H sleeve

**dress view 3**  
L front  
M back

**dress view 4**  
N front  
P back

**dress view 5**  
DX sleeve view 5

**dress view 6**  
R front  
S back

**top view 6**  
FX front and back

**top view 3**  
L front  
M back

**top view 4**  
CX back  
BX front

**top view 5**  
EX front and back

**top view 6**  
FX front and back

**shorts view 3**  
N front  
P back

**shorts view 5**  
EX front and back

**shorts view 6**  
GX front  
HX back

**jacket view 4-5**  
AX sleeve view 4  
DX sleeve view 5

**jacket view 6**  
R front facing  
S back

**skirt front and back**  
K skirt front and back

**FRONT AND BACK**  
1-4

**FRONT AND BACK**  
5-6

Courtesy CrissyAndBeth.com

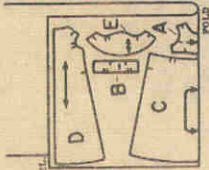
# cutting layouts

(The metric equivalent is in parenthesis)

Disregard any perforations on tissue pattern pieces

NOTE: On cutting layouts, duplicate or reversed pieces are shown by broken lines.

## VIEW 1 dress



35" 36"  
(90cm) 44"  
(115cm) fabric  
with or  
without nap  
all sizes  
NOTE: Cut one  
by B.

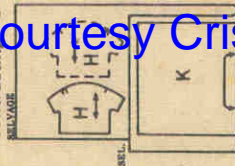
bodice



35" 36"  
(90cm) fabric  
with or  
without nap  
all sizes

## VIEW 2 dress

contrasting sleeves and skirt



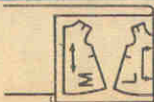
44" 45"  
(115cm) fabric  
with or  
without nap  
all sizes



35" 36"  
(90cm) 44"  
(115cm) fabric  
with or  
without nap  
all sizes

## VIEW 3 top

top and pants

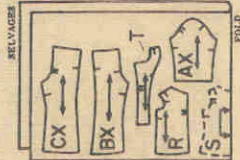


35" 36"  
(90cm) 44"  
(115cm) fabric  
with or  
without nap  
all sizes

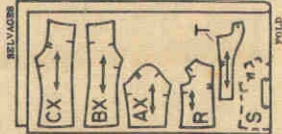


## VIEW 4

jacket and pants



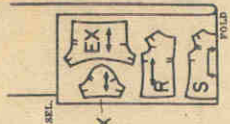
35" 36"  
(90cm) fabric  
with or  
without nap  
all sizes



44" 45"  
(115cm) fabric  
with or  
without nap  
all sizes

## VIEW 5

jacket and shorts



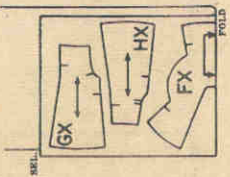
35" 36"  
(90cm) 44"  
(115cm) fabric  
with or  
without nap  
all sizes



35" 36"  
(90cm) 44"  
(115cm) fabric  
with or  
without nap  
all sizes

## VIEW 6

top and pants



35" 36"  
(90cm) 44"  
(115cm) fabric  
with or  
without nap  
all sizes

Courtesy CrissyAndBeth.com

The metric equivalent is in parenthesis.

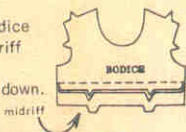
**NOTE:** Stitch in 1/4" (6mm) seams, matching notches.  
Press seams open unless otherwise instructed.

YIPW  
**1**

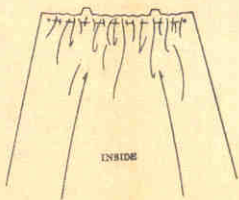
## dress

### bodice front and midriff front

1. Stitch bodice front to midriff front.  
Press seam down.



### skirt front



2. Gather upper edge along seam line between small dots, using a long machine-stitch.

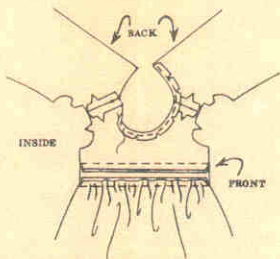
### stitching skirt to midriff and bodice

3. With RIGHT sides together, pin skirt front to lower edge of midriff, matching centers and small dots.

Pull up machine-stitching to fit. Stitch. Press seam up.



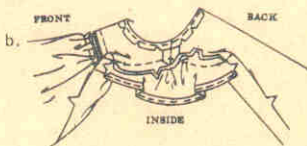
### back and shoulder seams



4. Stitch shoulder seams, matching small dots.  
Stitch under 1/4" (6mm) on neck edge, clipping curves.

### sleeves

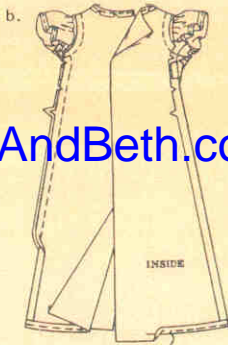
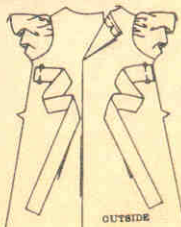
5. a—Gather top of sleeve between notches, using a long machine-stitch.  
Stitch under 1/4" (6mm) on lower edge.



b—With RIGHT sides together, pin sleeve to armhole edge, matching small dots. Pull up machine-stitching to fit; stitch. Press seam toward sleeve.

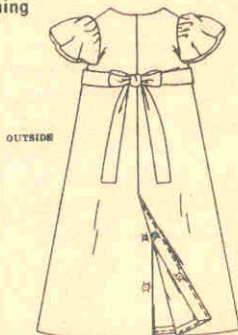
### underarm seams and tie ends

6. a—Cut two pieces of ribbon each 18" (45.7cm) long for tie ends. Baste one end of each tie end to back between medium dots.



b—Stitch entire underarm seams. Clip curves.  
Stitch under 1/4" (6mm) on lower edge.

### finishing



7. Stitch RIGHT back edge to INSIDE along center back line. Lap RIGHT back over LEFT, matching centers; fasten with snaps.  
Tie ends of ribbon into a bow at center back.

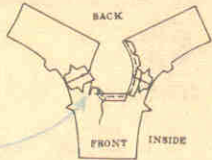
**DIRECTIONS CONTINUED ON OTHER SIDE**

2

**dress**

**bodice front and bodice back**

1. Stitch shoulder seams, matching small dots.  
Stitch under 1/4" (6mm) on neck edge, clipping curves and to small dots at inner corners.



**sleeves**

2. a—Gather top of sleeve between notches, using a long machine-stitch.  
Stitch under 1/4" (6mm) on lower edge of sleeves.

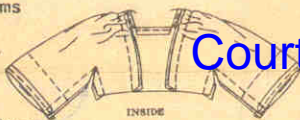


b—On OUTSIDE, stitch center of rick-rack along solid line at lower edge of sleeve.



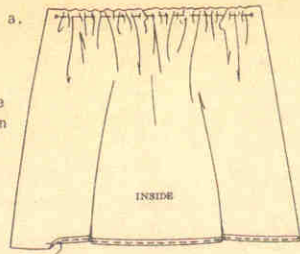
**underarm seams**

3. With RIGHT sides together, stitch underarm seams. Clip curves to small dot, as shown.

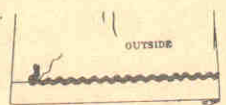


**skirt front and back**

4. a—Gather upper edge along seam line between medium dots, using a long machine-stitch.  
Stitch under 1/4" (6mm) on lower edge.



b—On OUTSIDE, stitch center of rick-rack along solid line at lower edge of skirt.



**stitching skirt to bodice**

5. With RIGHT sides together, pin skirt to bodice, matching centers and small dots.  
Pull up machine-stitching to fit. Stitch. Press seam up. Stitch RIGHT back edge to INSIDE along center back line.



**finishing**

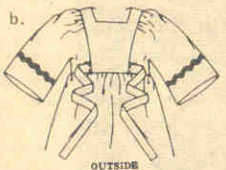
6. a—Lap RIGHT back over LEFT, matching centers; fasten with snaps.

Tie ends of ribbon into a bow at center back.



b—Cut two pieces of ribbon each 13-1/2" (34.3cm) long for tie ends.

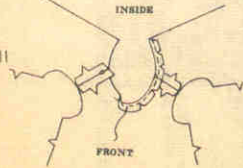
Turn under 1/4" (6mm) on each end of tie end; stitch to front between small dots.



3  
**top**

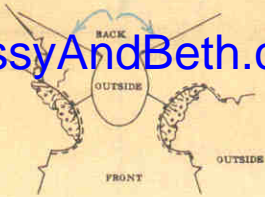
**front and back**

1. Stitch shoulder seams, matching small dots.  
Stitch under 1/4" (6mm) on neck edge, clipping curves.



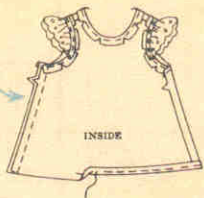
**armhole ruffle**

2. a—Gather underarm edge, clipping curves. Stitch armhole over bound edge of embroidered eyelet edging, tapering ends of edging at small dots.



**side seams**

3. Stitch side seams. Stitch under 1/4" (6mm) on lower edge.



**tie ends**

4. Cut two pieces of ribbon, each 13-1/2" (34.3cm) long for tie ends.  
Turn under 3/8" (9mm) on one end of each tie end. Stitch to front between small dots, placing fold edge 1/4" (6mm) over small dots, as shown.



**finishing**

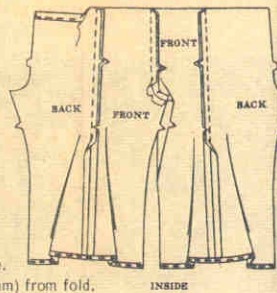
5. Stitch RIGHT back edge to INSIDE along center back line.  
Lap RIGHT back over LEFT, matching centers; fasten with snaps.  
Tie ends of ribbon into a bow at center back.



**pants**

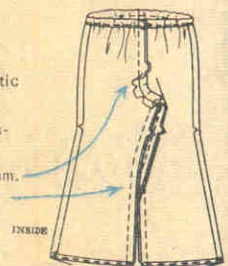
**front, back and casing**

1. Stitch center front seam. Clip curves. Stitch front to back at side seams. Clip curves. Stitch under 1/4" (6mm) on leg edges. To form casing, press upper edge to INSIDE along solid line. Stitch 3/8" (9mm) from fold.



**elastic and seams**

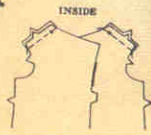
2. Cut a piece of elastic 7-1/2" (19cm) long. Insert elastic thru casing; sew ends. Stitch center back seam. Stitch inner leg seam.



4  
**jacket**

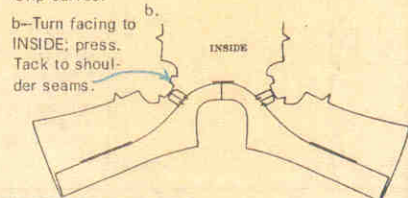
**front and back**

1. Stitch shoulder seams, matching small dots.



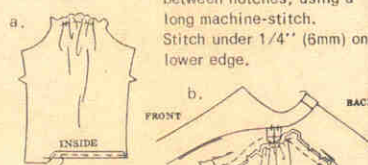
**facing**

2. a—Stitch center back seam of facing. With RIGHT sides together, stitch facing to jacket, matching centers back and small dots. Trim corners; Clip curves.

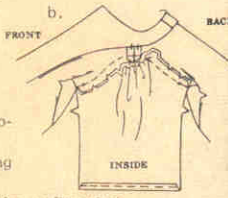


**sleeves**

3. a—Gather top of sleeve between notches, using a long machine-stitch. Stitch under 1/4" (6mm) on lower edge.



b—With RIGHT sides together, pin sleeve to armhole edge, matching small dots. Pull up machine-stitching to fit; stitch. Press seam toward sleeve.



Courtesy CrissyAndBeth.com

### underarm seam and tie ends

4. a—Cut two pieces of ribbon each 9" (22.9cm) long for tie end. Baste one end of each tie end to back between small dots.



b—Stitch entire underarm seams. Clip curves. Stitch under 1/4" (6mm) on lower edge.

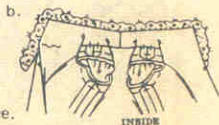


### finishing

5. a—To gather lace edging, machine-stitch close to straight edge, using a long machine-stitch.



b—Pin neck edge over straight edge of lace edging, tapering ends of edging at small dots in front. Hand-sew edging in place.



c—Turn upper edge of front to OUTSIDE along solid line, forming collar. Lap RIGHT front over LEFT, matching centers; fasten with snaps at small dots.



Sew button to RIGHT front over snaps. Tie ends of ribbon into a bow at center back.

Courtesy CrissyAndBeth.com

### elastic and seams

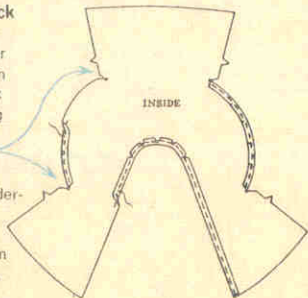
2. Cut a piece of elastic 7-1/2" (19cm) long. Insert elastic thru casing; sew ends. Stitch center back seam. Clip curves. Stitch inner leg seam.



### top

#### front and back

1. Stitch under 1/4" (6mm) on front and neck edge, clipping curves. Clip to small dots at inner corners of underarm edges. Stitch under 1/4" (6mm) on curved edges.



#### underarm seams

2. With RIGHT sides together, stitch underarm seams, matching small dots. Stitch under 1/4" (6mm) on lower edge.



### finishing

3. Cut a piece of ribbon 22-1/2" (57.2cm) long for tie belt. Lap RIGHT front over LEFT, matching centers. Tie belt into a bow at center front.



Make same as view 3 pants.

VIEW 5

### jacket

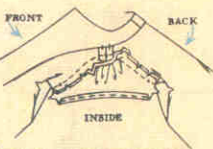
Prepare same as jacket view 4, see step 1 thru 2.

#### sleeves

3. a—Gather top of sleeve between notches, using a long machine-stitch. Stitch under 1/4" (6mm) on lower edge.



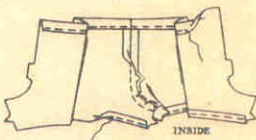
b—With RIGHT sides together, pin sleeve to armhole edge, matching small dots. Pull up machine-stitching to fit; stitch. Press seam toward sleeve. Complete same as view 4 jacket, omitting reference to lace edging in finishing.



### shorts

#### center front seam and casings

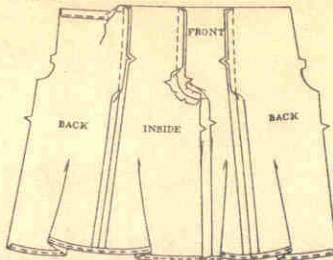
1. Stitch center front seam. Clip curves. Stitch under 1/4" (6mm) on leg edges. To form casing, press upper edge to INSIDE along solid line. Stitch 3/8" (9mm) from fold.



### wide leg pants

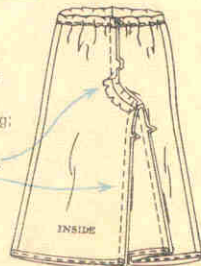
#### front, back and casing

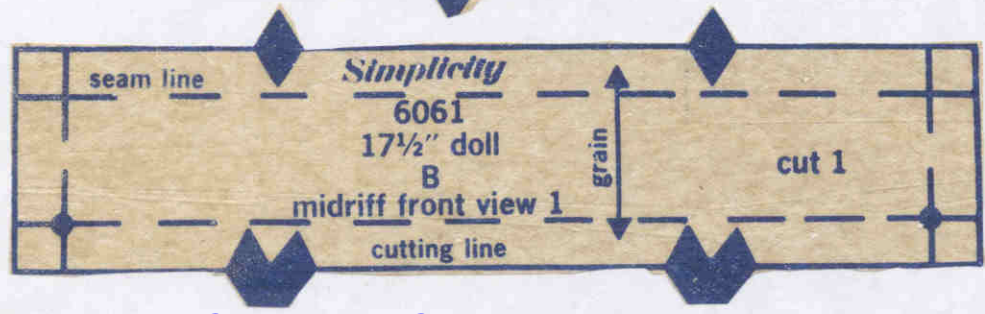
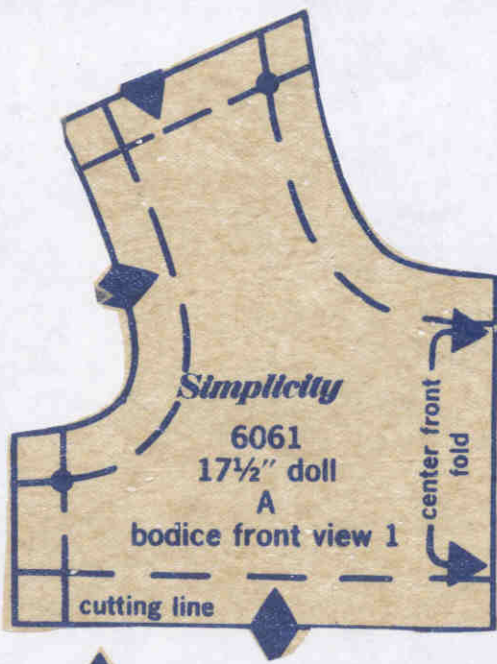
1. Stitch center front seam. Clip curves. Stitch front to back at side seams. Clip curves. Stitch under 1/4" (6mm) on leg edges. To form casing, press upper edge to INSIDE along solid line. Stitch 3/8" (9mm) from fold.



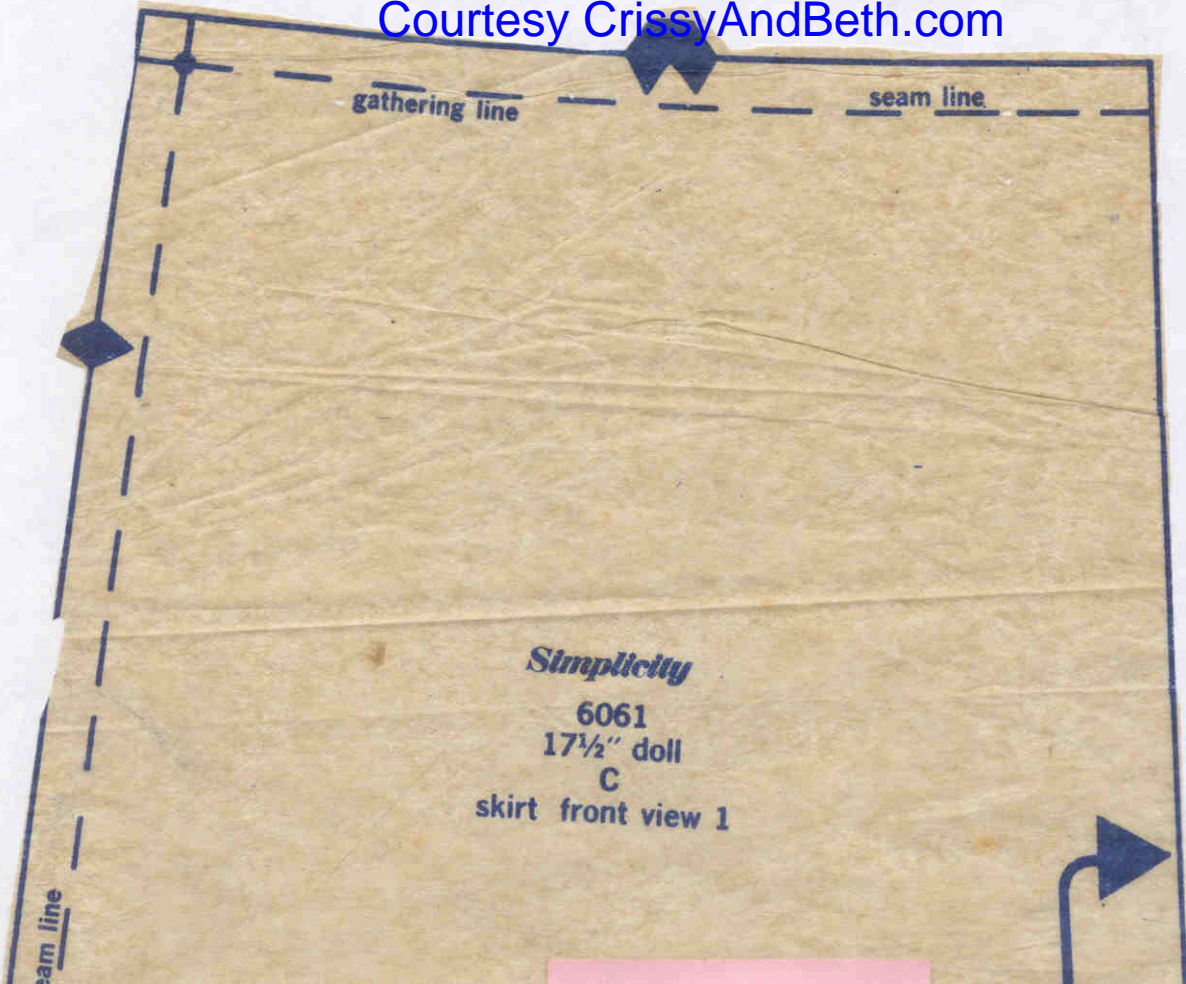
#### elastic and seams

2. Cut a piece of elastic 7-1/2" (19cm) long. Insert elastic thru casing; sew ends. Stitch center back seam. Stitch inner leg seam.





Courtesy CrissyAndBeth.com



This piece is continued on next page.

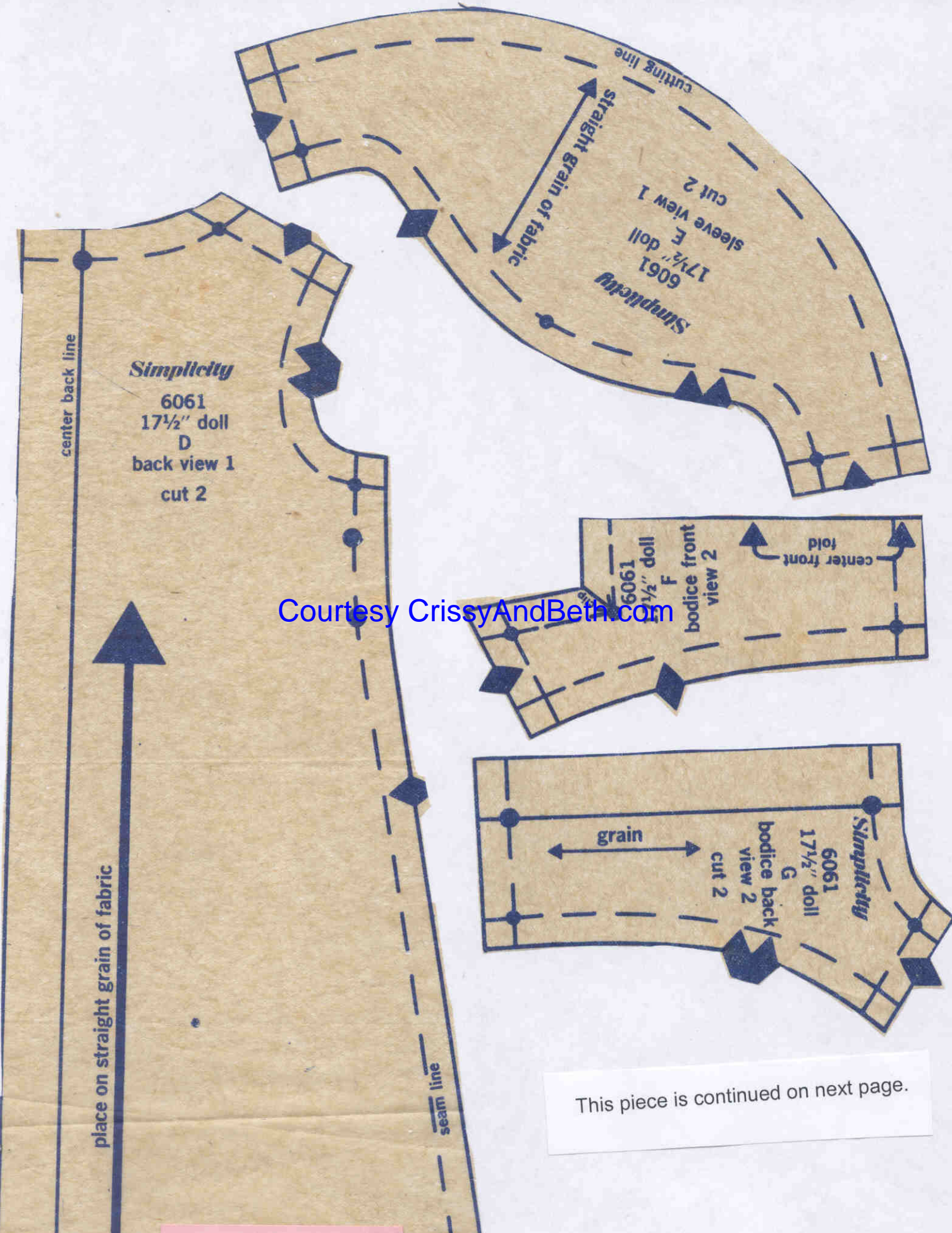
sea

center front — place line on fold

Courtesy CrissyAndBeth.com

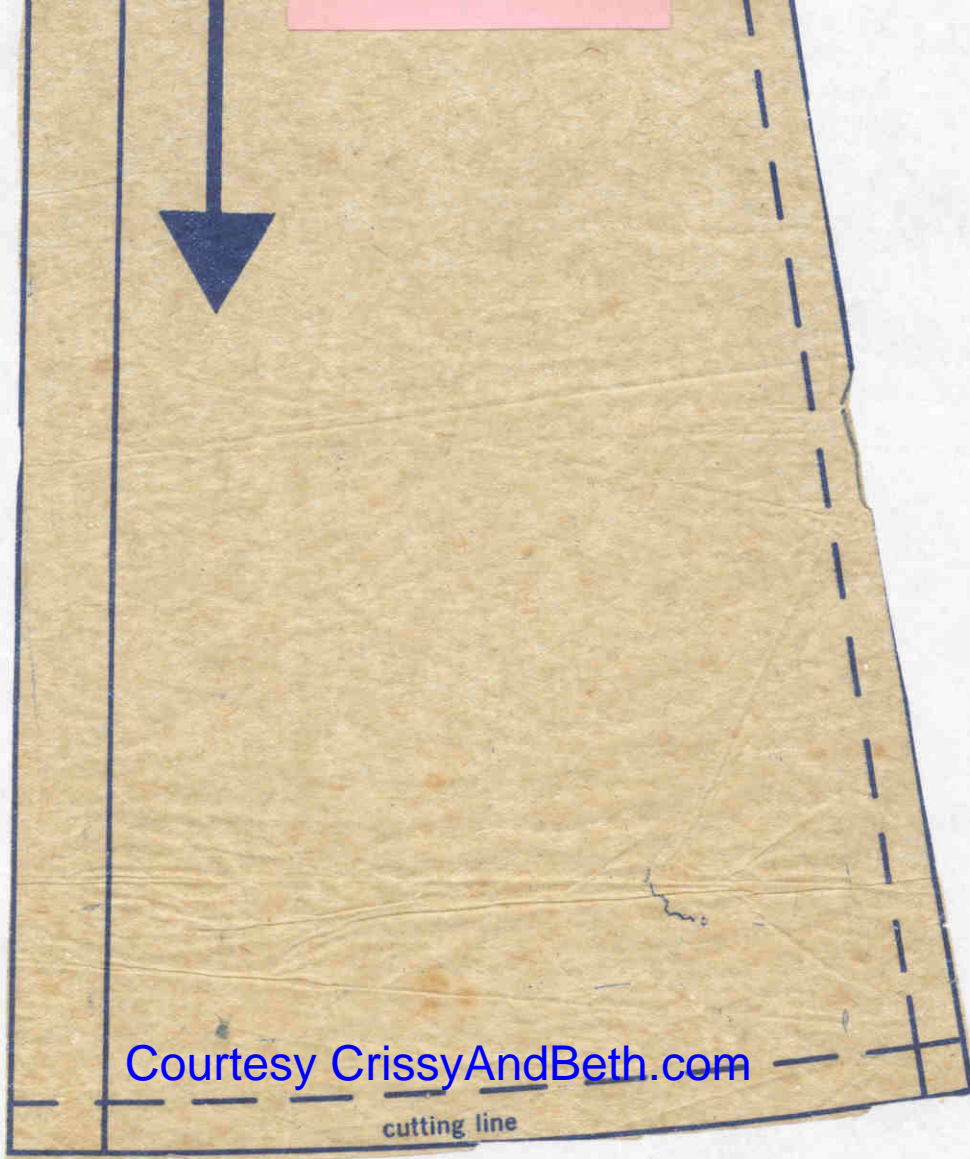
cutting line





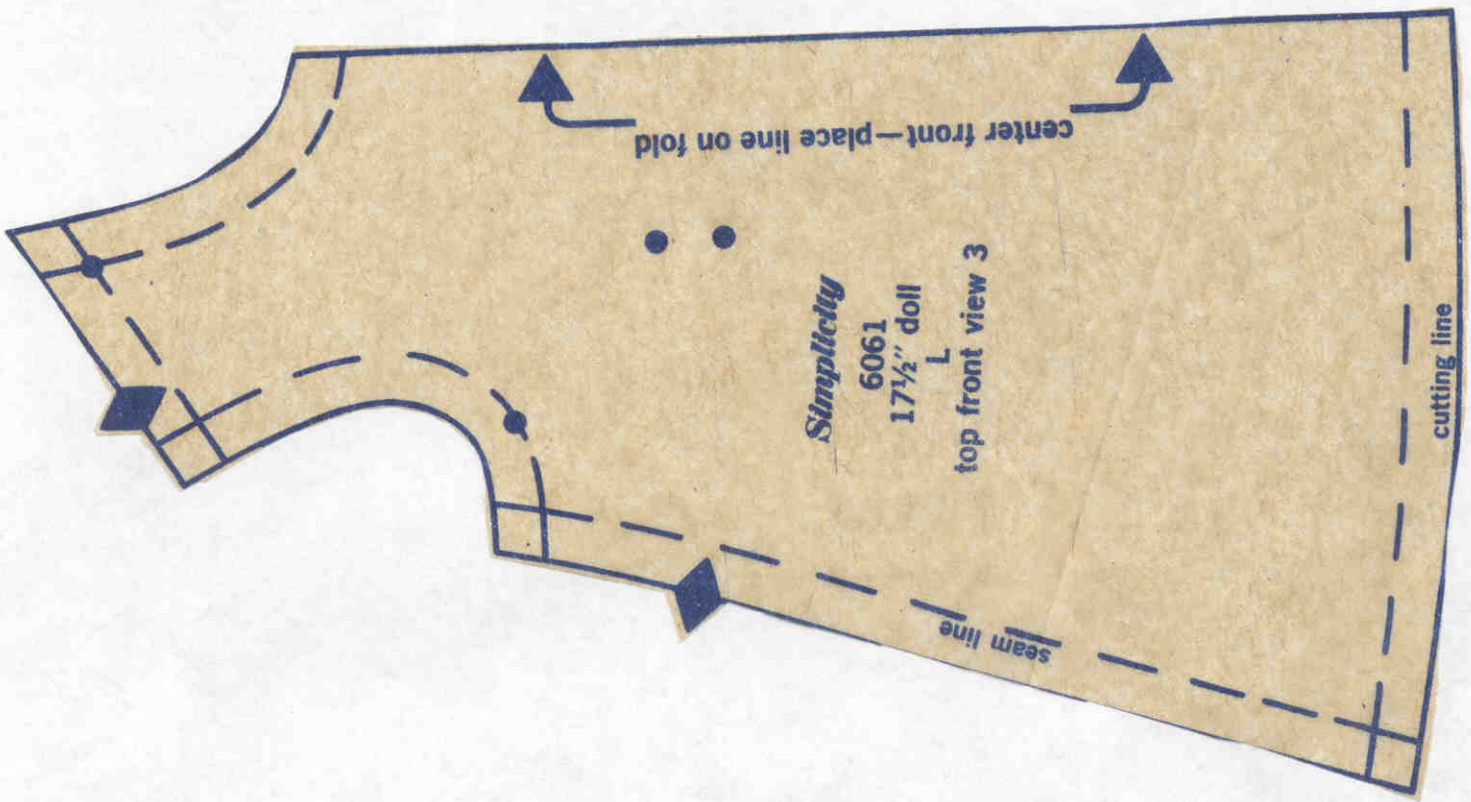
Courtesy CrissyAndBeth.com

This piece is continued on next page.



Courtesy CrissyAndBeth.com

cutting line

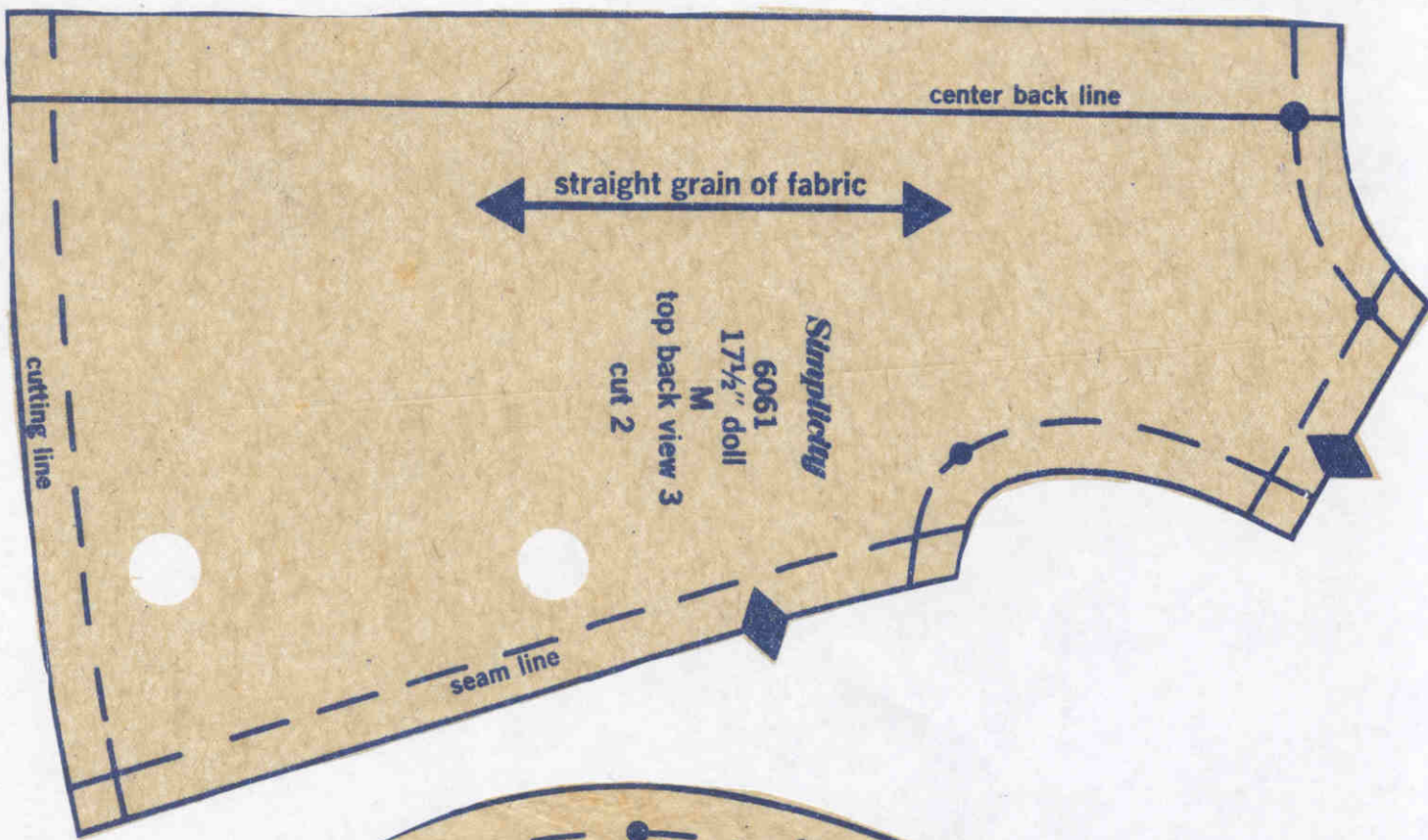


Simplicity  
6061  
17 1/2" doll  
L  
top front view 3

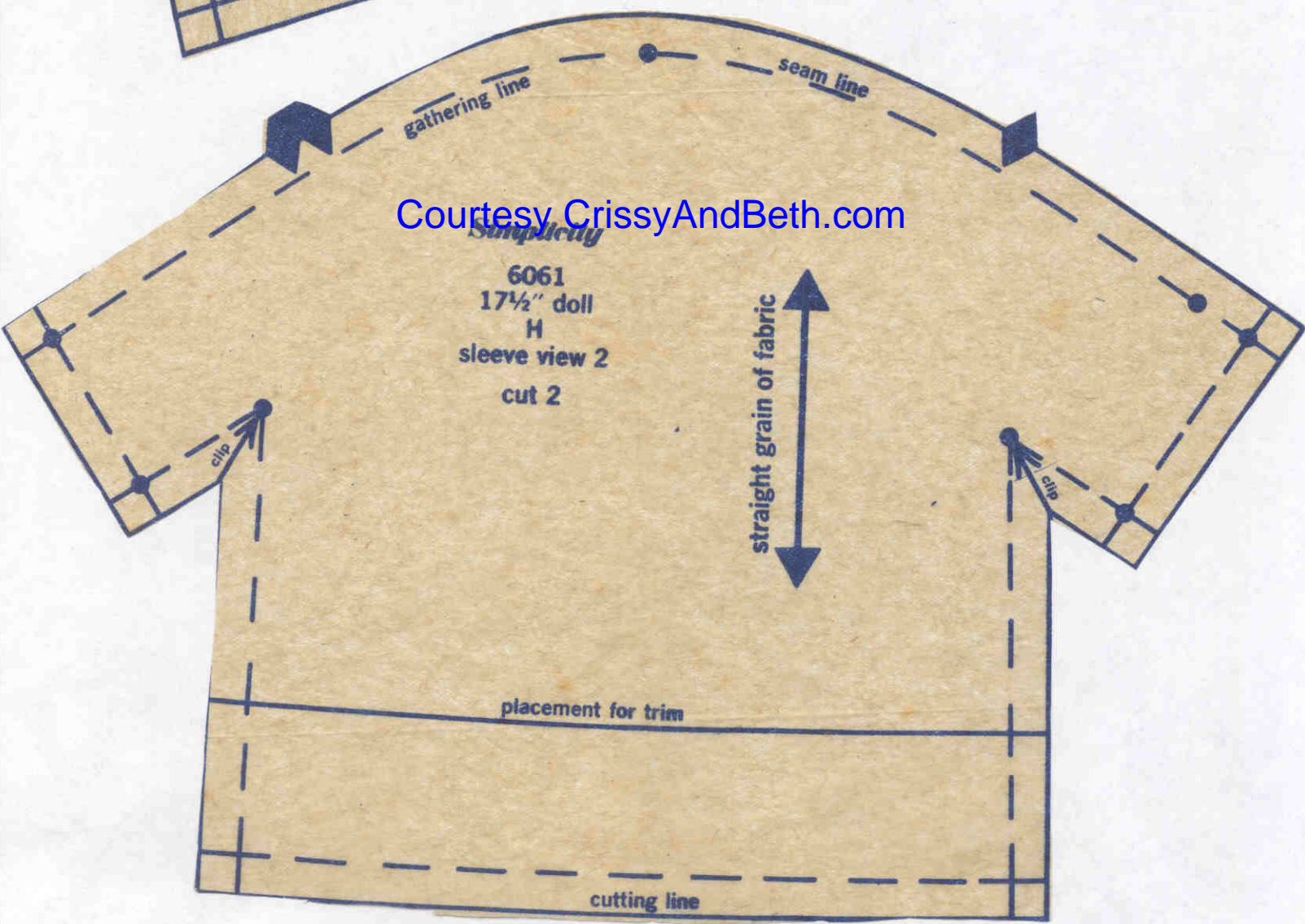
center front—place line on fold

seam line

cutting line



Courtesy CrissyAndBeth.com



seam line

gathering line

center back line



ce line on fold

Courtesy CrissyAndBeth.com

*Simplcity*

6061

7 1/2" doll

K

skirt front and back view 2

This piece is continued on next page.

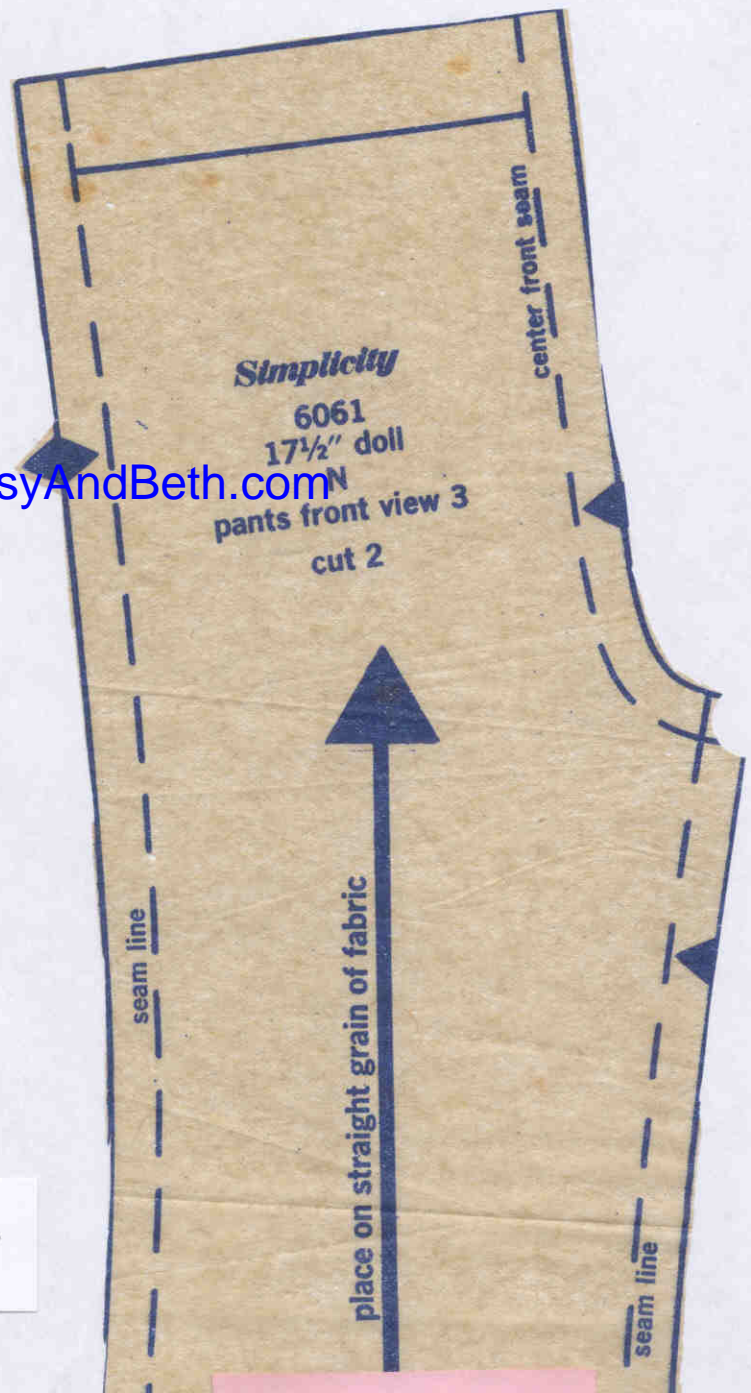
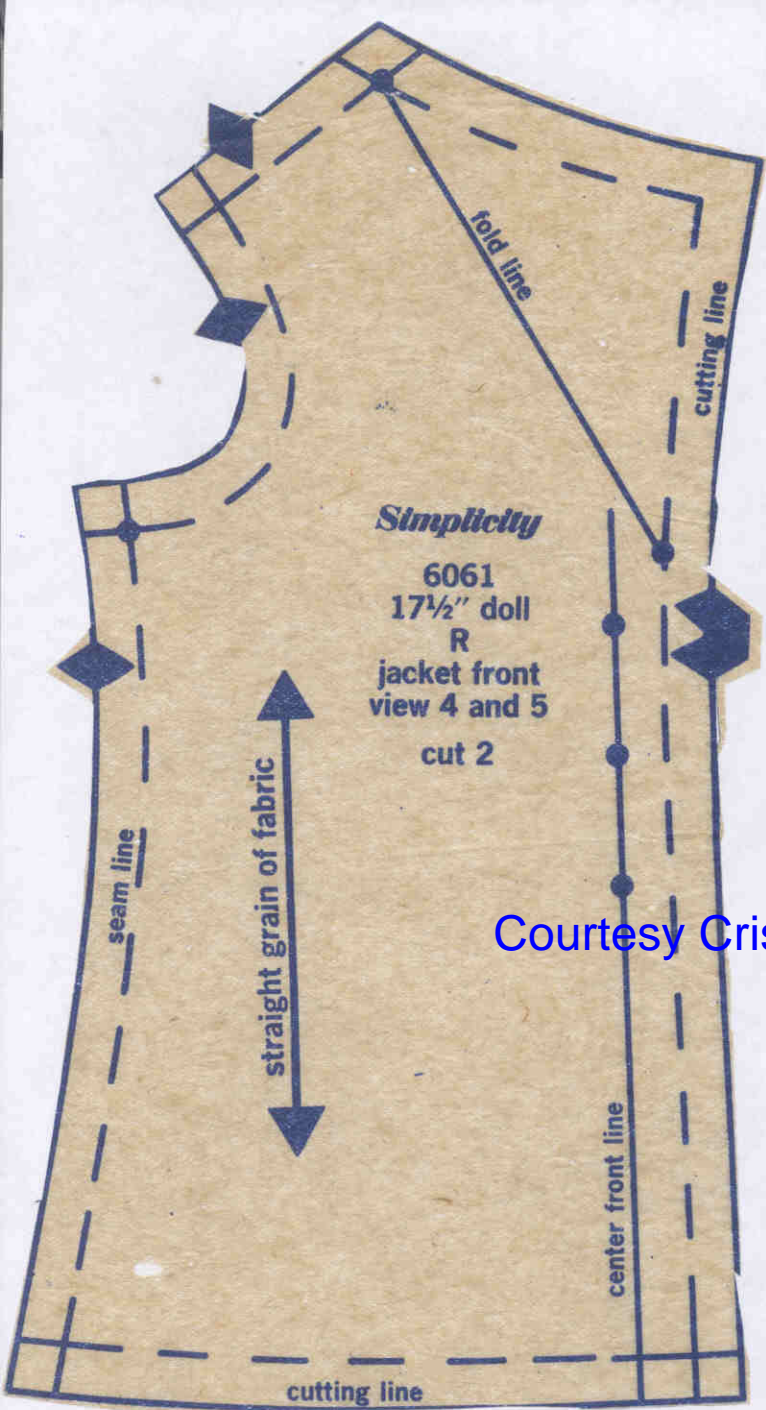
center front—place



Courtesy CrissyAndBeth.com

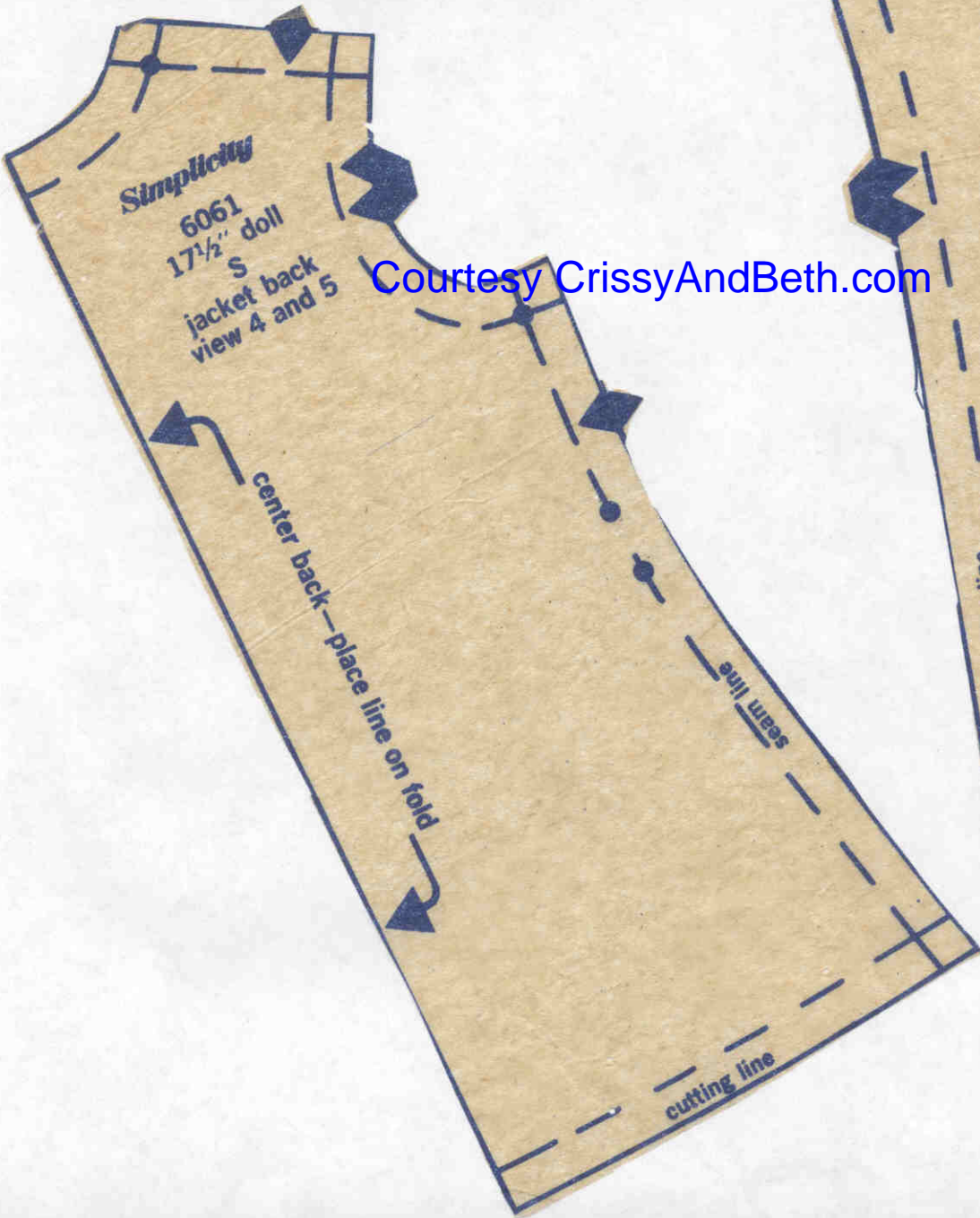
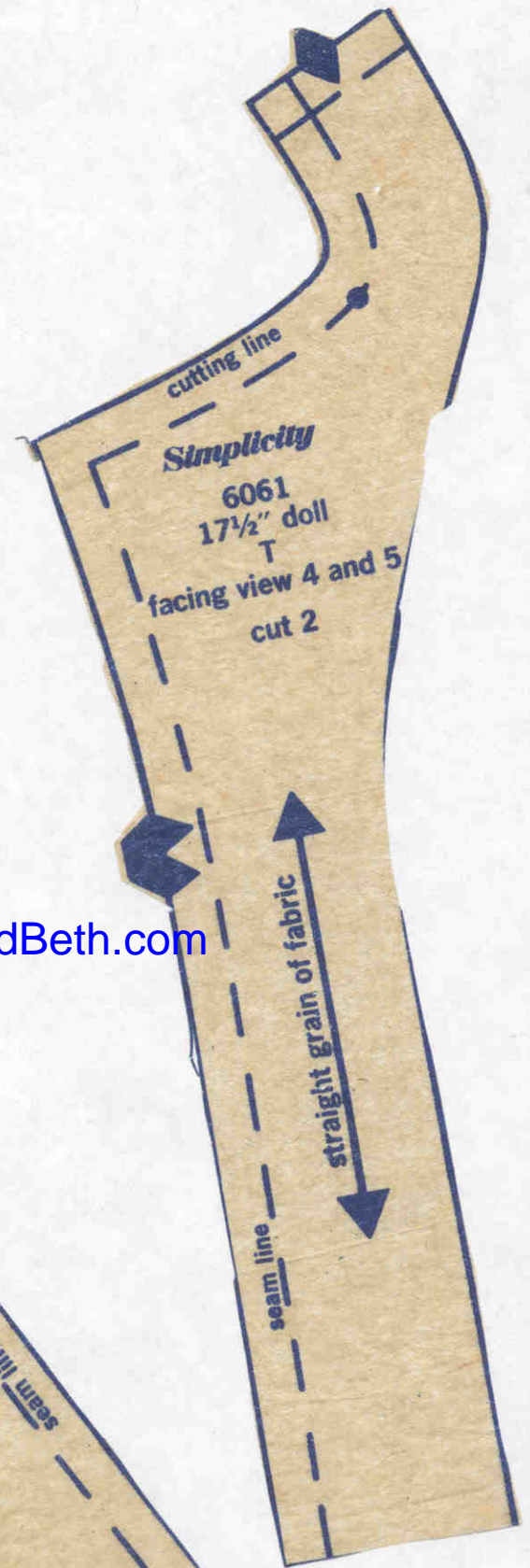
placement for top

cutting line

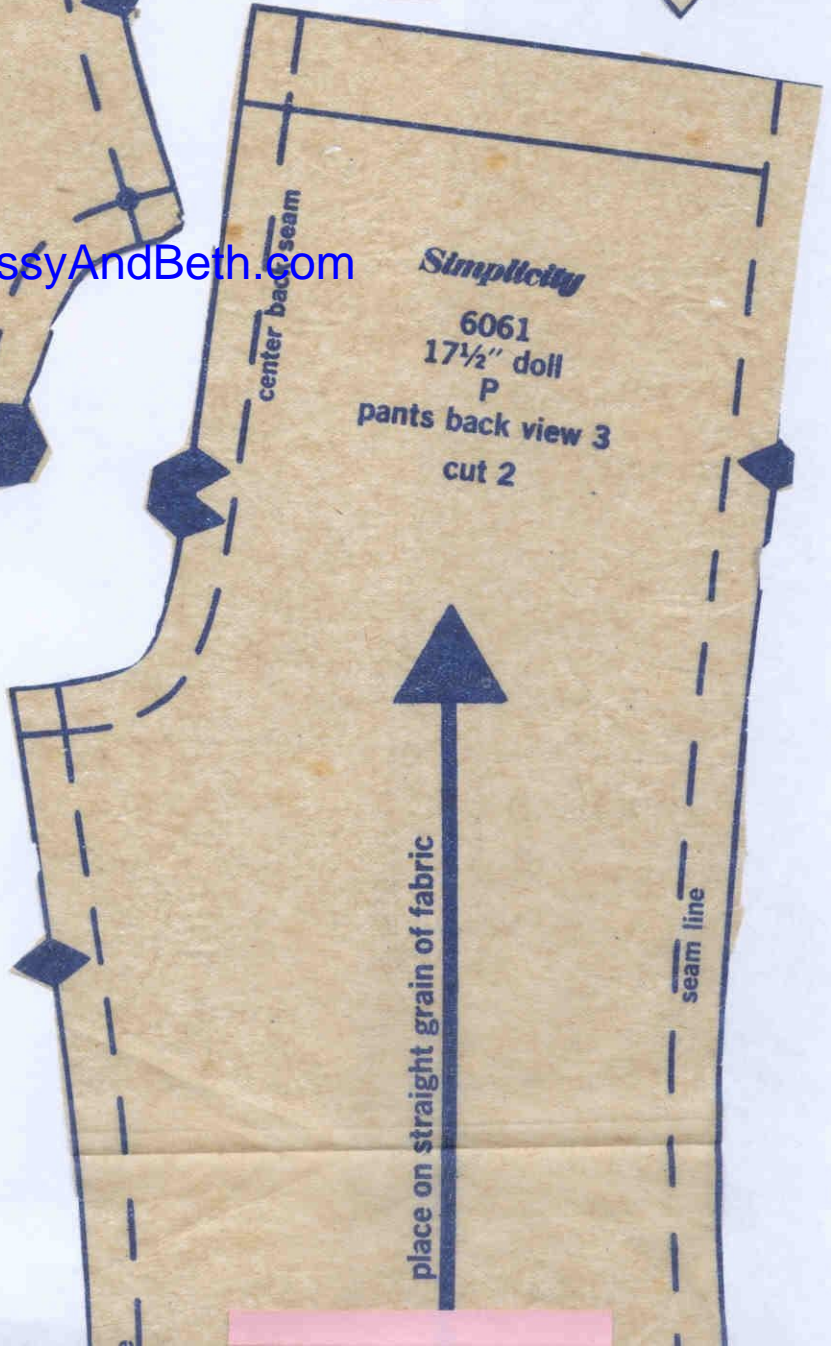
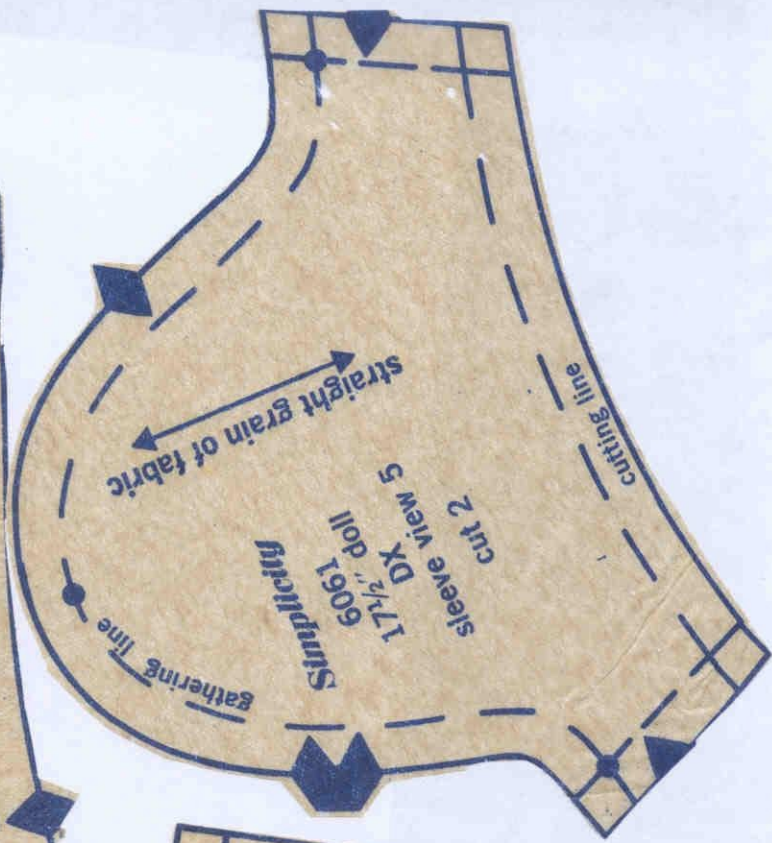
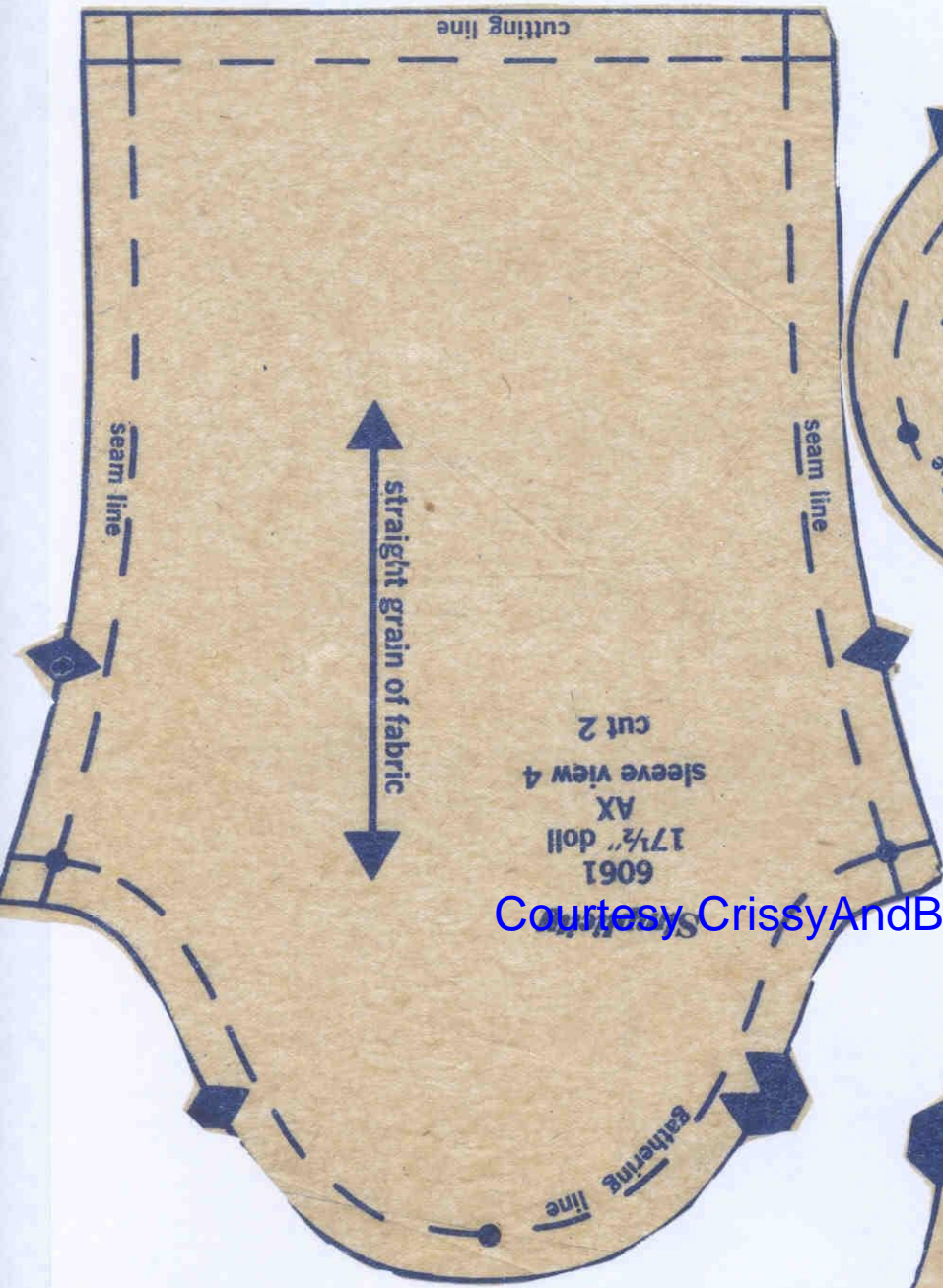


Courtesy CrissyAndBeth.com

This piece is continued on next page.



Courtesy CrissyAndBeth.com

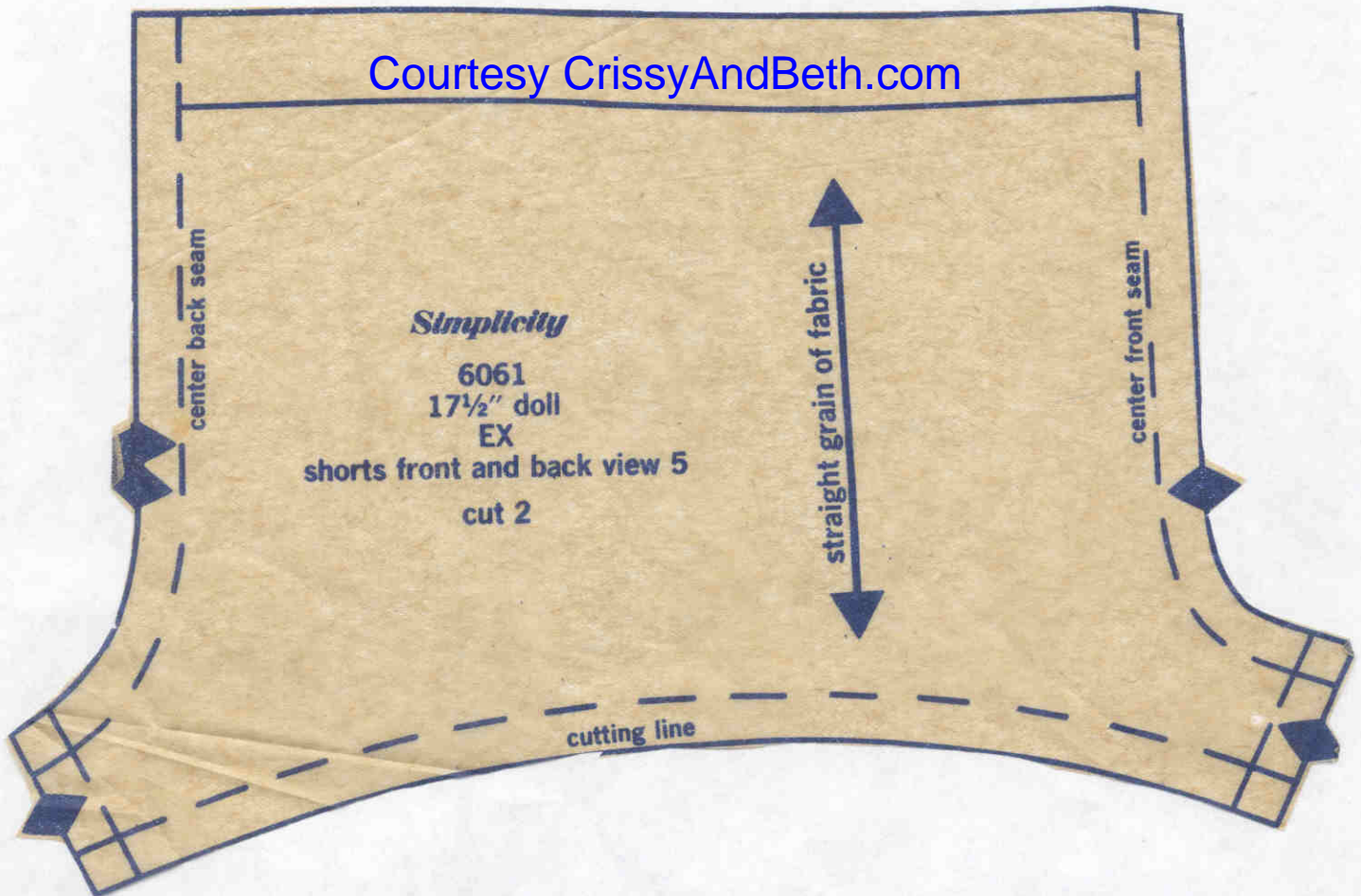


Courtesy CrissyAndBeth.com

This piece is continued on next page.



Courtesy CrissyAndBeth.com



*Simplicity*  
6061  
17½" doll  
CX  
pants back view 4  
cut 2

*Simplicity*  
6061  
17½" doll  
BX  
pants front view 4  
cut 2

center back seam

center front seam

place on straight grain of fabric

place on straight grain of fabric

seam line

seam line

seam line

seam line

cutting line

cutting line

Courtesy CrissyAndBeth.com

*Simplicity*

6061  
17½" doll  
GX  
pants front view 6  
cut 2

center front seam

seam line

seam line

place on straight grain of fabric

cutting line

Courtesy CrissyAndBeth.com

*Simplicity*  
6061  
17½" doll  
HX  
pants back view 6  
cut 2

center back seam

seam line

seam line

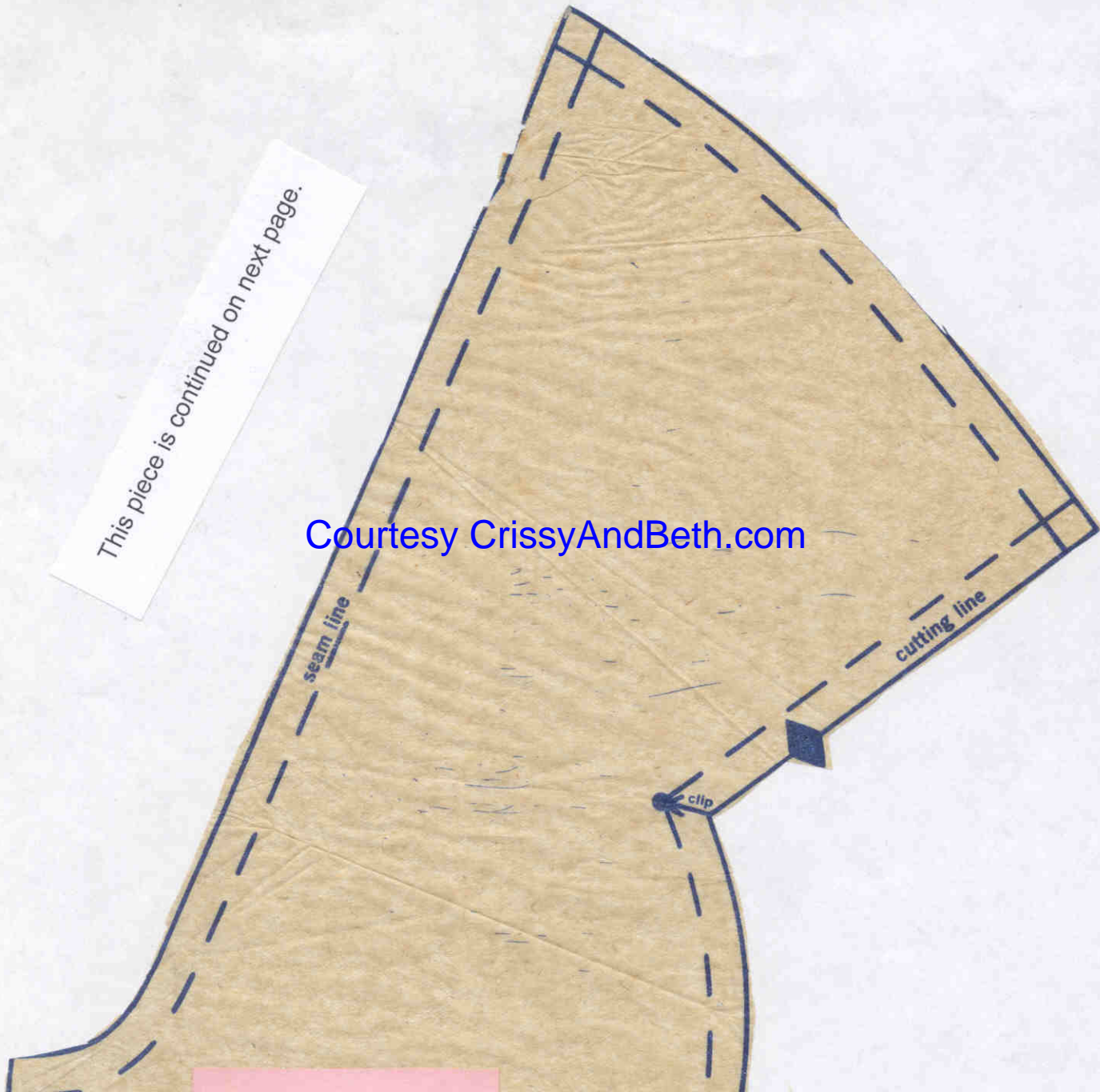
place on straight grain of fabric

cutting line

Courtesy CrissyAndBeth.com

This piece is continued on next page.

Courtesy CrissyAndBeth.com



*Simplicity*

6061

17½" doll

FX

top front and back view 6

seam line

center back—place line on fold

clip

Courtesy CrissyAndBeth.com

cutting line

