

Simplicity 6061

cutting and sewing directions

select pattern pieces for your view

24 pieces given

VIEW 1
5 pieces dress A, B, C, D, E

VIEW 2
4 pieces F, G, H, K

VIEW 3
4 pieces top L, M, N, P

VIEW 4
6 pieces jacket R, S, T, AX
pants BX, CX

VIEW 5
5 pieces jacket R, S, T, DX
shorts EX

VIEW 6
3 pieces top FX
pants GX, HX

dress view 1
E sleeve
B bodice front
C skirt front
D back

dress view 2
F bodice front
G bodice back
H sleeve
K skirt front and back

top view 3
L front
M back

pants view 3
N front
P back

jacket view 4-5
DX sleeve view 5
AX sleeve view 4
R front facing
S back
T

pants view 4
CX back
BX front

shorts view 5
EX front and back

top view 6
FX front and back

pants view 6
GX front
HX back

Courtesy CrissyAndBeth.com

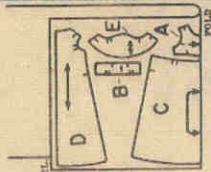
cutting layouts

(The metric equivalent is in parenthesis)

Disregard any perforations on tissue pattern pieces

NOTE: On cutting layouts, duplicate or reversed pieces are shown by broken lines.

VIEW 1 dress



35" 36"
(90cm) 44"
(115cm) fabric
with or
without nap
all sizes
NOTE: Cut one
by B.

bodice



35" 36"
(90cm) fabric
with or
without nap
all sizes

VIEW 2 dress

contrasting sleeves and skirt



44" 45"
(115cm) fabric
with or
without nap
all sizes



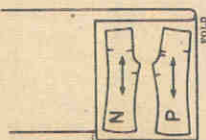
35" 36"
(90cm) 44"
(115cm) fabric
with or
without nap
all sizes

VIEW 3 top

top and pants

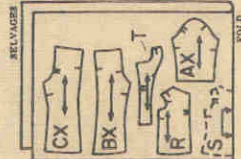


35" 36"
(90cm) 44"
(115cm) fabric
with or
without nap
all sizes

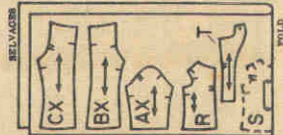


VIEW 4 jacket and pants

jacket and pants



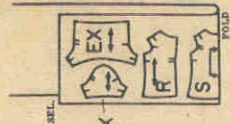
35" 36"
(90cm) fabric
with or
without nap
all sizes



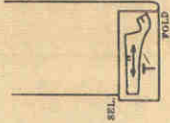
44" 45"
(115cm) fabric
with or
without nap
all sizes

VIEW 5 jacket and shorts

jacket and shorts



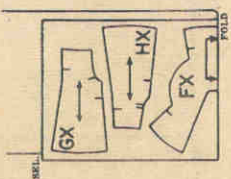
35" 36"
(90cm) 44"
(115cm) fabric
with or
without nap
all sizes



35" 36"
(90cm) 44"
(115cm) fabric
with or
without nap
all sizes

VIEW 6 top and pants

top and pants



35" 36"
(90cm) 44"
(115cm) fabric
with or
without nap
all sizes

Courtesy CrissyAndBeth.com

The metric equivalent is in parenthesis.

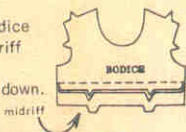
NOTE: Stitch in 1/4" (6mm) seams, matching notches.
Press seams open unless otherwise instructed.

YIPW
1

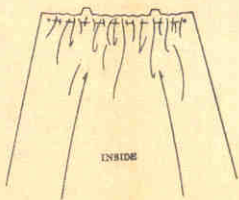
dress

bodice front and midriff front

1. Stitch bodice front to midriff front.
Press seam down.



skirt front



2. Gather upper edge along seam line between small dots, using a long machine-stitch.

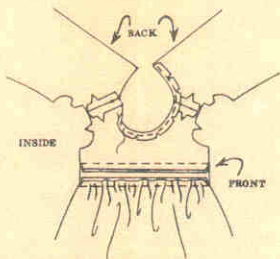
stitching skirt to midriff and bodice

3. With RIGHT sides together, pin skirt front to lower edge of midriff, matching centers and small dots.

Pull up machine-stitching to fit. Stitch. Press seam up.



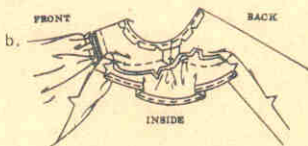
back and shoulder seams



4. Stitch shoulder seams, matching small dots.
Stitch under 1/4" (6mm) on neck edge, clipping curves.

sleeves

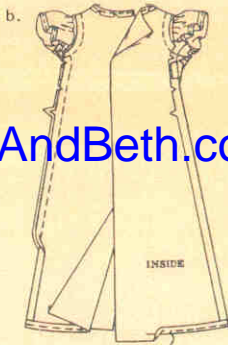
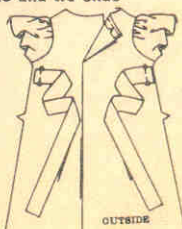
5. a—Gather top of sleeve between notches, using a long machine-stitch.
Stitch under 1/4" (6mm) on lower edge.



b—With RIGHT sides together, pin sleeve to armhole edge, matching small dots. Pull up machine-stitching to fit; stitch. Press seam toward sleeve.

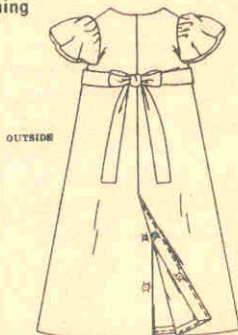
underarm seams and tie ends

6. a—Cut two pieces of ribbon each 18" (45.7cm) long for tie ends. Baste one end of each tie end to back between medium dots.



b—Stitch entire underarm seams. Clip curves.
Stitch under 1/4" (6mm) on lower edge.

finishing



7. Stitch RIGHT back edge to INSIDE along center back line. Lap RIGHT back over LEFT, matching centers; fasten with snaps.
Tie ends of ribbon into a bow at center back.

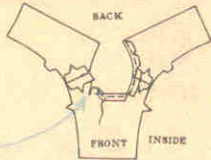
DIRECTIONS CONTINUED ON OTHER SIDE

2

dress

bodice front and bodice back

1. Stitch shoulder seams, matching small dots.
Stitch under 1/4" (6mm) on neck edge, clipping curves and to small dots at inner corners.



sleeves

2. a—Gather top of sleeve between notches, using a long machine-stitch.
Stitch under 1/4" (6mm) on lower edge of sleeves.

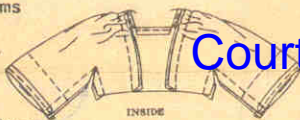


b—On OUTSIDE, stitch center of rick-rack along solid line at lower edge of sleeve.



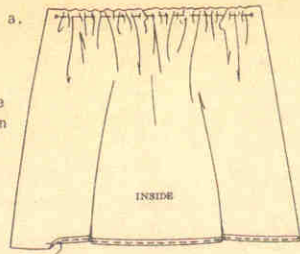
underarm seams

3. With RIGHT sides together, stitch underarm seams. Clip curves to small dot, as shown.

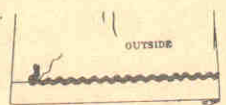


skirt front and back

4. a—Gather upper edge along seam line between medium dots, using a long machine-stitch.
Stitch under 1/4" (6mm) on lower edge.



b—On OUTSIDE, stitch center of rick-rack along solid line at lower edge of skirt.



stitching skirt to bodice

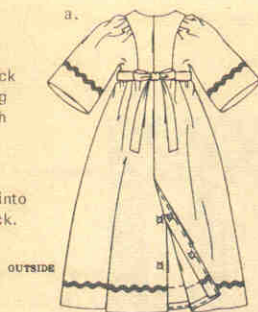
5. With RIGHT sides together, pin skirt to bodice, matching centers and small dots. Pull up machine-stitching to fit. Stitch. Press seam up. Stitch RIGHT back edge to INSIDE along center back line.



finishing

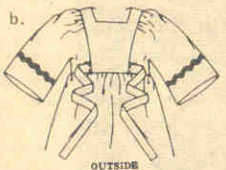
6. a—Lap RIGHT back over LEFT, matching centers; fasten with snaps.

Tie ends of ribbon into a bow at center back.



b—Cut two pieces of ribbon each 13-1/2" (34.3cm) long for tie ends.

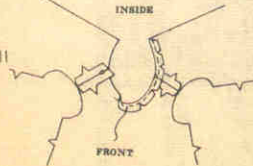
Turn under 1/4" (6mm) on each end of tie end; stitch to front between small dots.



3
top

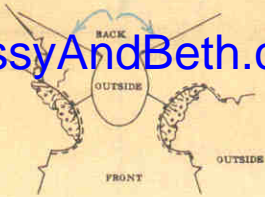
front and back

1. Stitch shoulder seams, matching small dots.
Stitch under 1/4" (6mm) on neck edge, clipping curves.



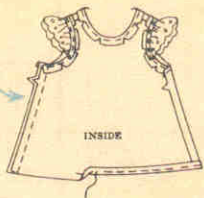
armhole ruffle

2. a—Gather underarm edge, clipping curves. Stitch armhole over bound edge of embroidered eyelet edging, tapering ends of edging at small dots.



side seams

3. Stitch side seams. Stitch under 1/4" (6mm) on lower edge.



tie ends

4. Cut two pieces of ribbon, each 13-1/2" (34.3cm) long for tie ends. Turn under 3/8" (9mm) on one end of each tie end. Stitch to front between small dots, placing fold edge 1/4" (6mm) over small dots, as shown.



finishing

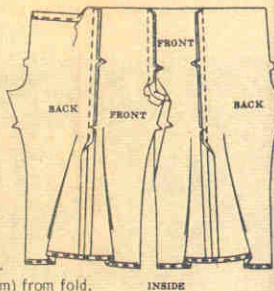
5. Stitch RIGHT back edge to INSIDE along center back line. Lap RIGHT back over LEFT, matching centers; fasten with snaps. Tie ends of ribbon into a bow at center back.



pants

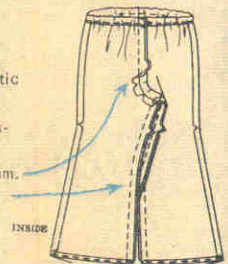
front, back and casing

1. Stitch center front seam. Clip curves. Stitch front to back at side seams. Clip curves. Stitch under 1/4" (6mm) on leg edges. To form casing, press upper edge to INSIDE along solid line. Stitch 3/8" (9mm) from fold.



elastic and seams

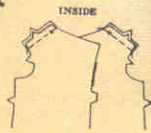
2. Cut a piece of elastic 7-1/2" (19cm) long. Insert elastic thru casing; sew ends. Stitch center back seam. Stitch inner leg seam.



4
jacket

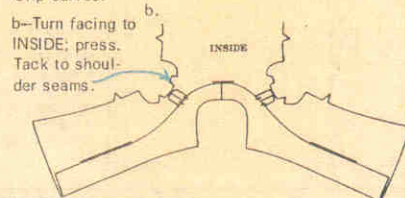
front and back

1. Stitch shoulder seams, matching small dots.



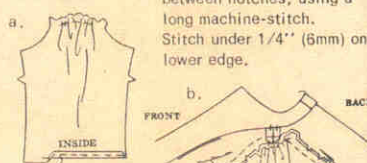
facing

2. a—Stitch center back seam of facing. With RIGHT sides together, stitch facing to jacket, matching centers back and small dots. Trim corners; Clip curves.

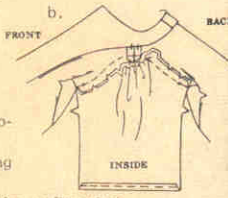


sleeves

3. a—Gather top of sleeve between notches, using a long machine-stitch. Stitch under 1/4" (6mm) on lower edge.



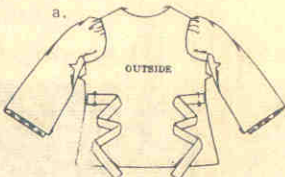
b—With RIGHT sides together, pin sleeve to armhole edge, matching small dots. Pull up machine-stitching to fit; stitch. Press seam toward sleeve.



Courtesy CrissyAndBeth.com

underarm seam and tie ends

4. a—Cut two pieces of ribbon each 9" (22.9cm) long for tie end. Baste one end of each tie end to back between small dots.



b—Stitch entire underarm seams. Clip curves. Stitch under 1/4" (6mm) on lower edge.

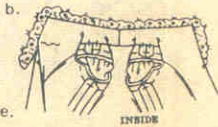


finishing

5. a—To gather lace edging, machine-stitch close to straight edge, using a long machine-stitch.



b—Pin neck edge over straight edge of lace edging, tapering ends of edging at small dots in front. Hand-sew edging in place.



c—Turn upper edge of front to OUTSIDE along solid line, forming collar. Lap RIGHT front over LEFT, matching centers; fasten with snaps at small dots.



Sew button to RIGHT front over snaps. Tie ends of ribbon into a bow at center back.

Courtesy CrissyAndBeth.com

elastic and seams

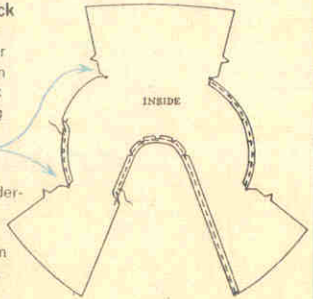
2. Cut a piece of elastic 7-1/2" (19cm) long. Insert elastic thru casing; sew ends. Stitch center back seam. Clip curves. Stitch inner leg seam.



top

front and back

1. Stitch under 1/4" (6mm) on front and neck edge, clipping curves. Clip to small dots at inner corners of underarm edges. Stitch under 1/4" (6mm) on curved edges.



underarm seams

2. With RIGHT sides together, stitch underarm seams, matching small dots. Stitch under 1/4" (6mm) on lower edge.



finishing

3. Cut a piece of ribbon 22-1/2" (57.2cm) long for tie belt. Lap RIGHT front over LEFT, matching centers. Tie belt into a bow at center front.



Make same as view 3 pants.

VIEW 5

jacket

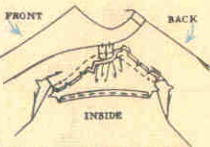
Prepare same as jacket view 4, see step 1 thru 2.

sleeves

3. a—Gather top of sleeve between notches, using a long machine-stitch. Stitch under 1/4" (6mm) on lower edge.



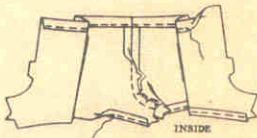
b—With RIGHT sides together, pin sleeve to armhole edge, matching small dots. Pull up machine-stitching to fit; stitch. Press seam toward sleeve. Complete same as view 4 jacket, omitting reference to lace edging in finishing.



shorts

center front seam and casings

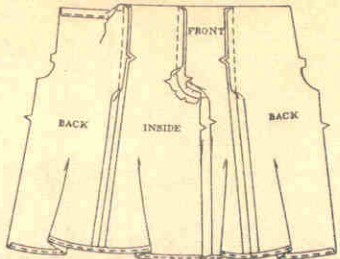
1. Stitch center front seam. Clip curves. Stitch under 1/4" (6mm) on leg edges. To form casing, press upper edge to INSIDE along solid line. Stitch 3/8" (9mm) from fold.



wide leg pants

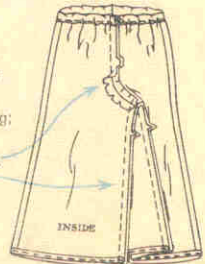
front, back and casing

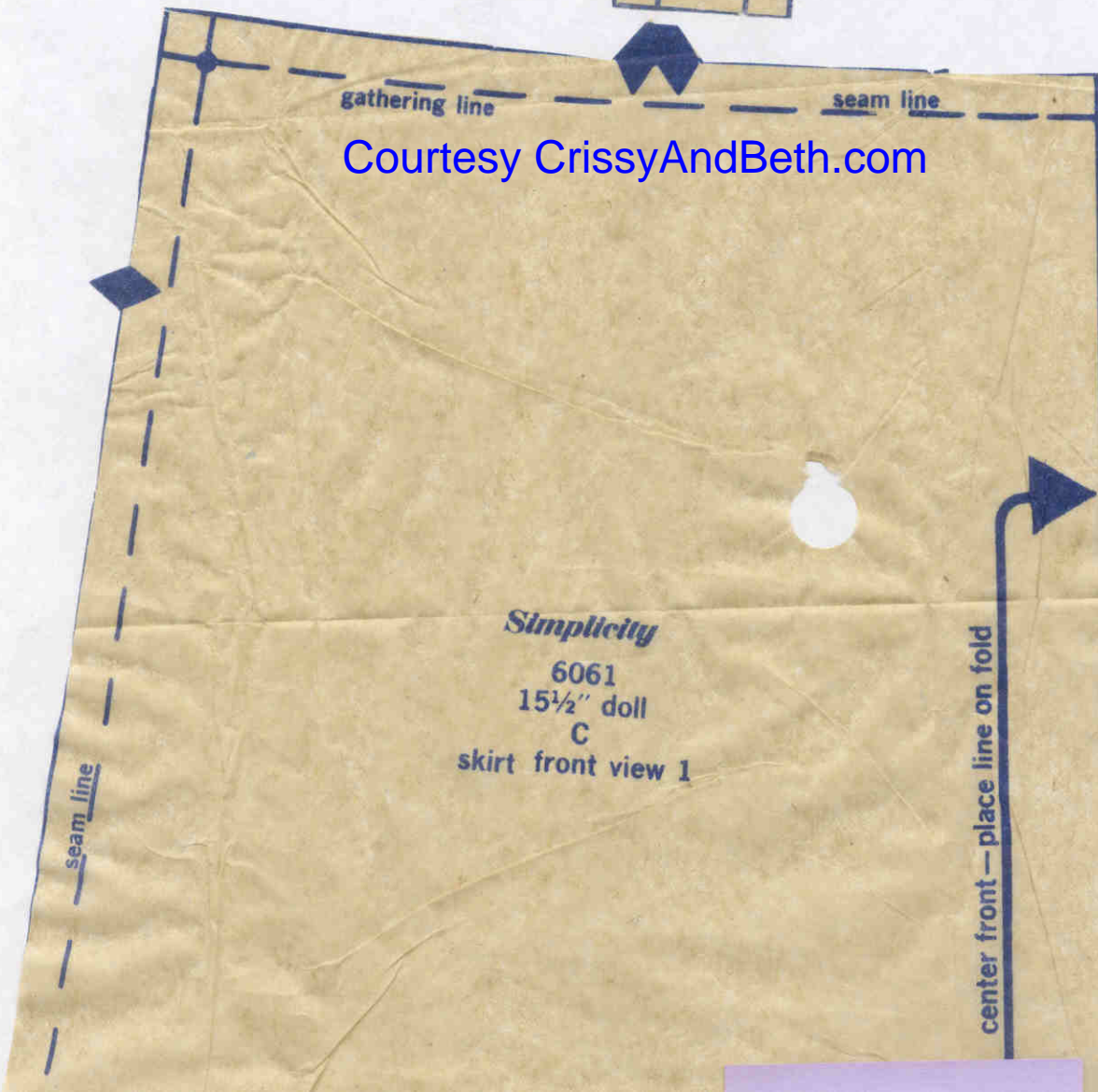
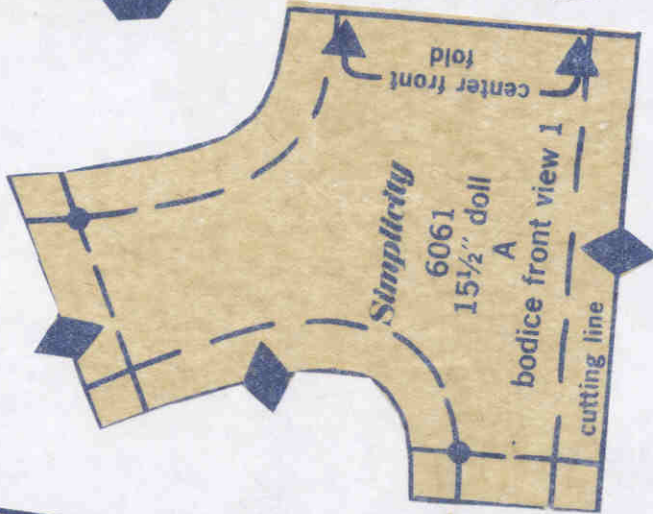
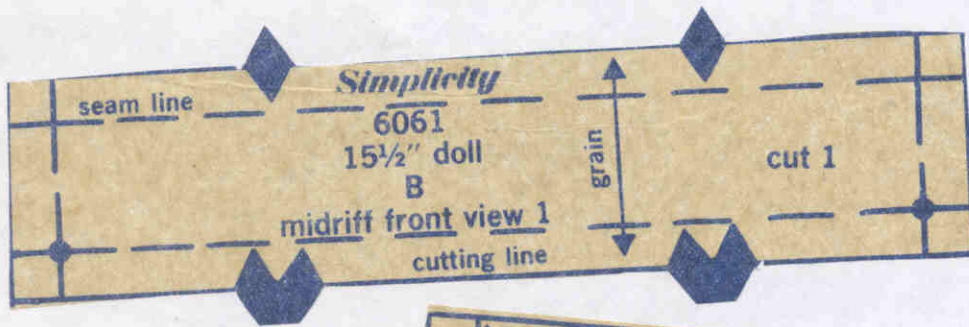
1. Stitch center front seam. Clip curves. Stitch front to back at side seams. Clip curves. Stitch under 1/4" (6mm) on leg edges. To form casing, press upper edge to INSIDE along solid line. Stitch 3/8" (9mm) from fold.



elastic and seams

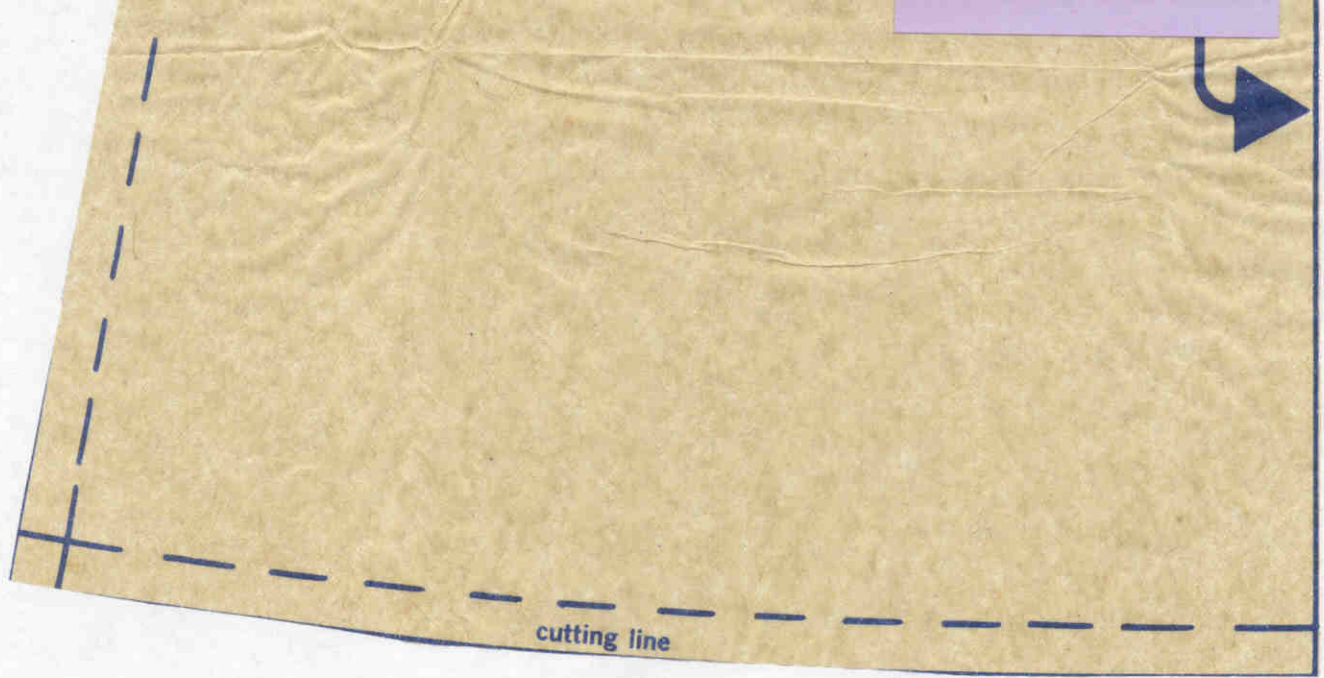
2. Cut a piece of elastic 7-1/2" (19cm) long. Insert elastic thru casing; sew ends. Stitch center back seam. Stitch inner leg seam.



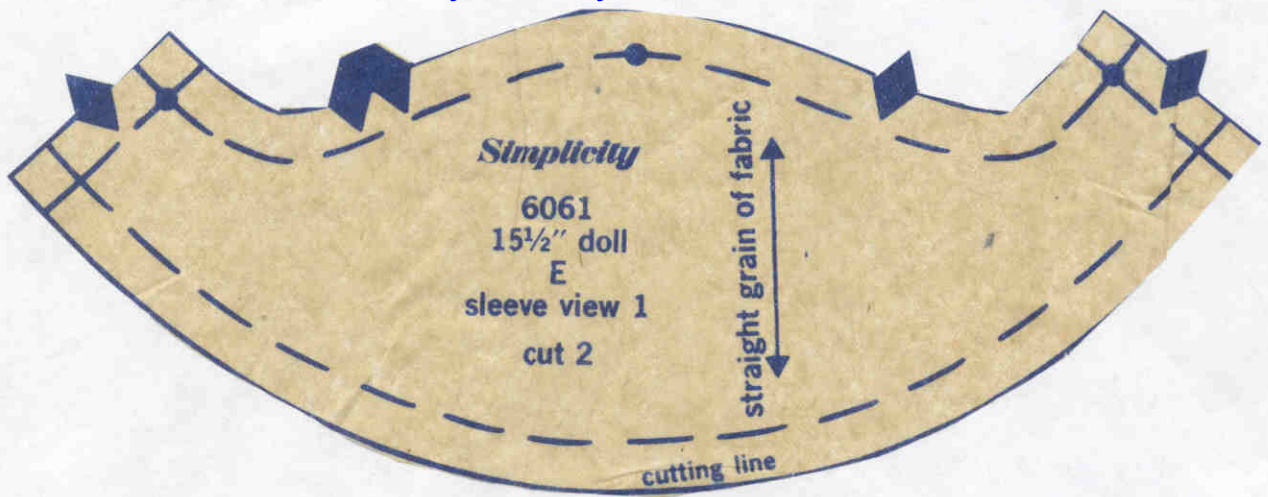


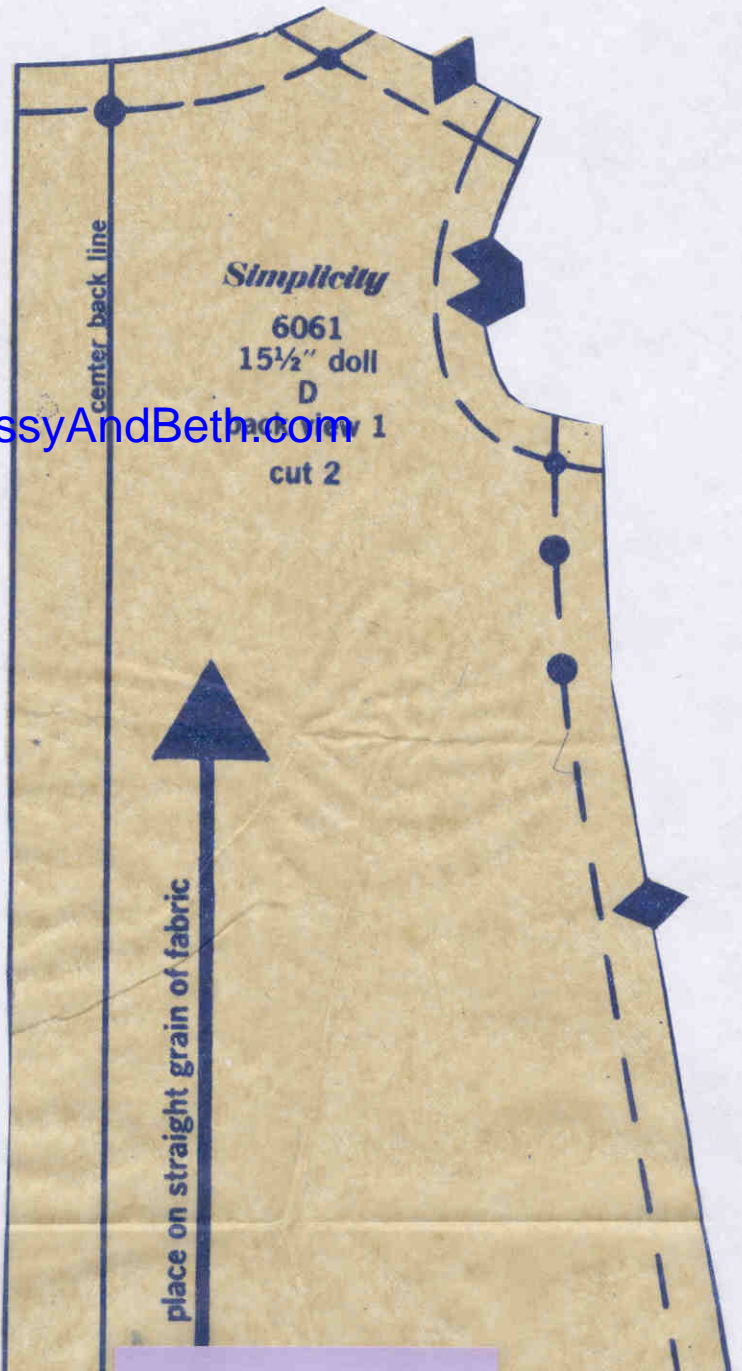
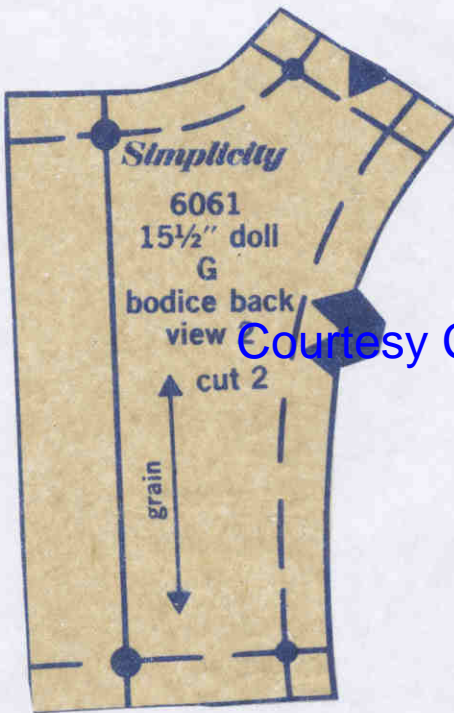
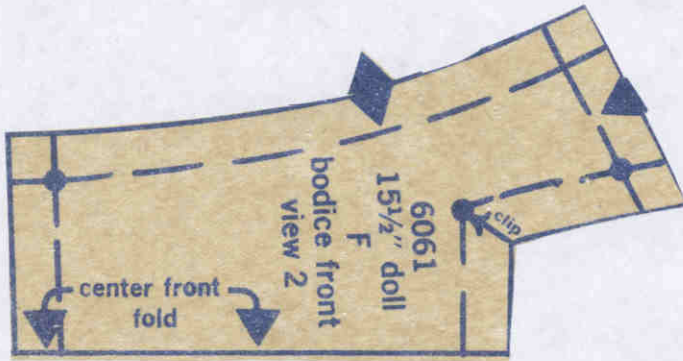
Courtesy CrissyAndBeth.com

This piece is continued on next page.

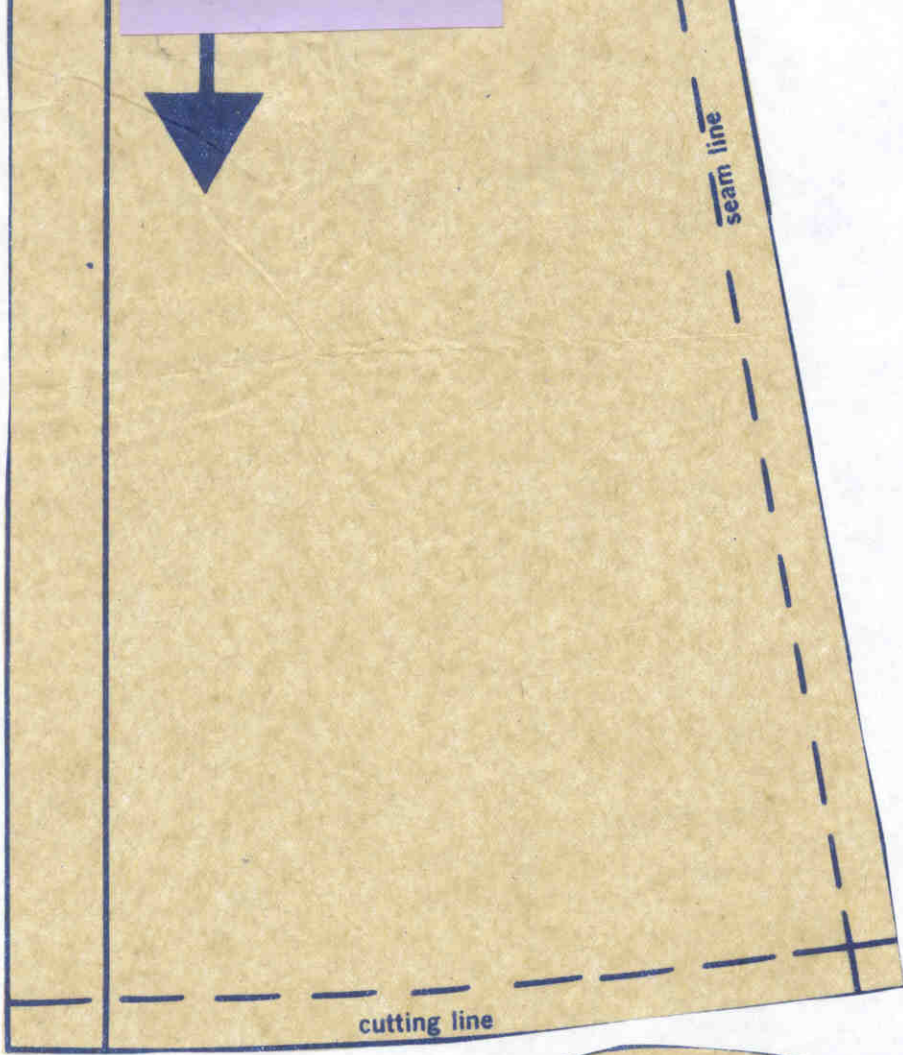


Courtesy CrissyAndBeth.com

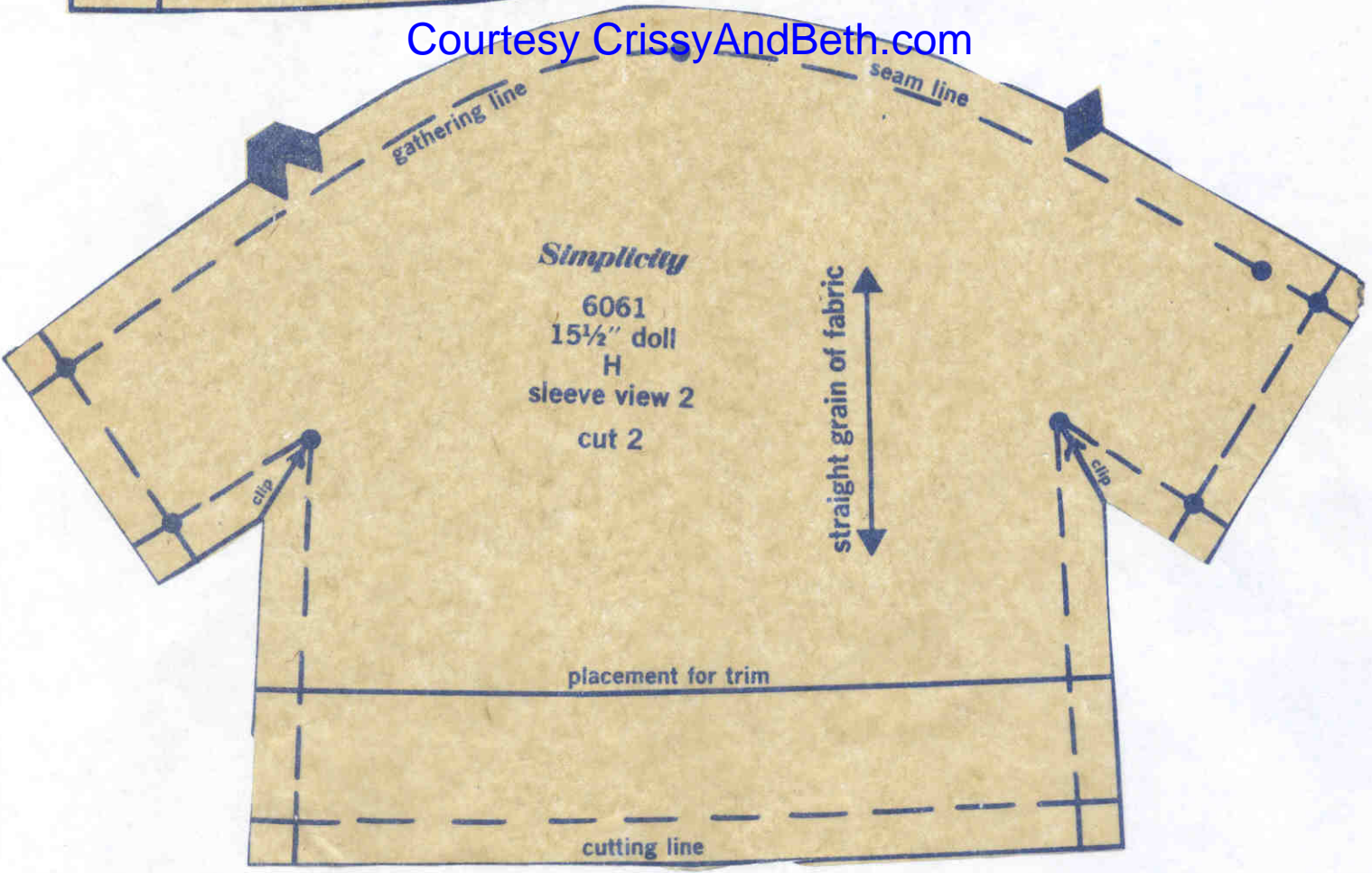




This piece is continued on next page.



Courtesy CrissyAndBeth.com



seam line

licity
061
" doll
K
d back view 2

Courtesy CrissyAndBeth.com

center front — place line on fold

This piece is continued on next page.

gathering line

center back line

Simplif

606

15½"

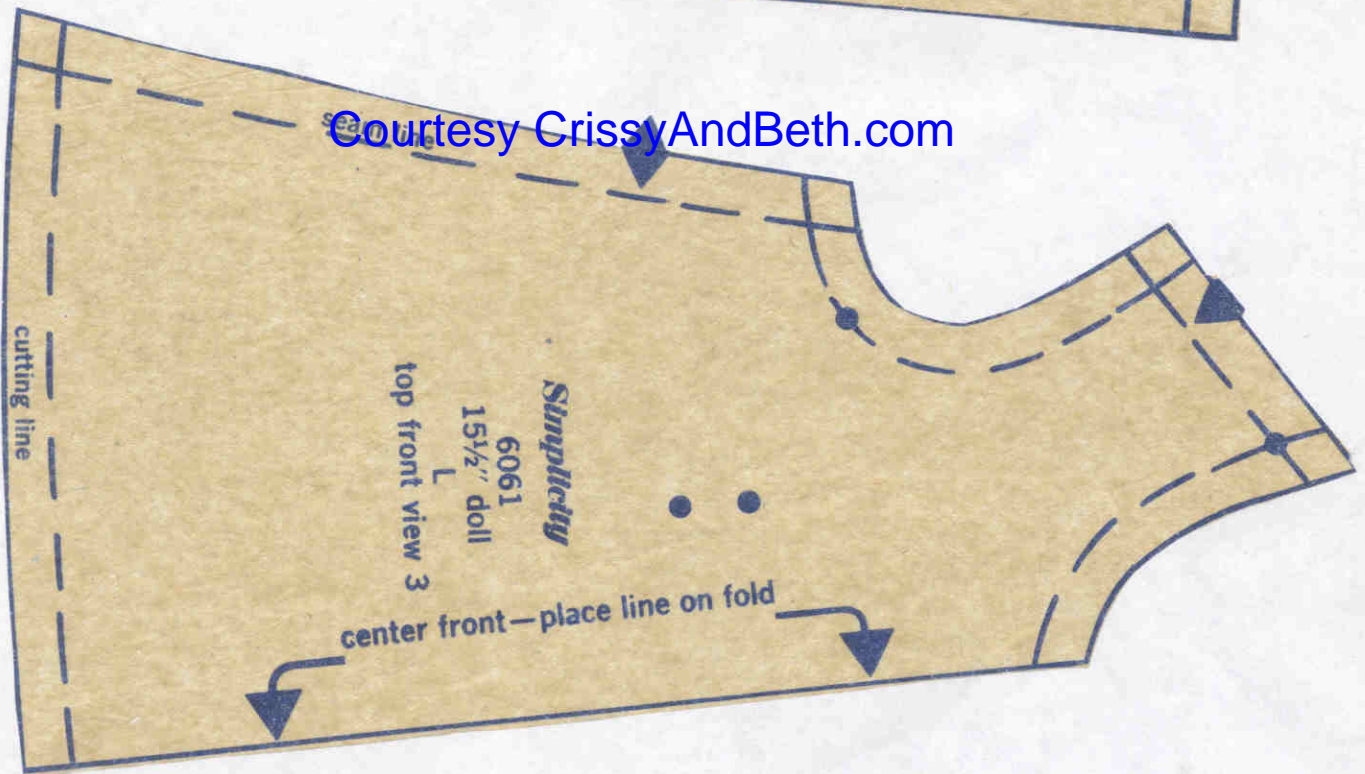
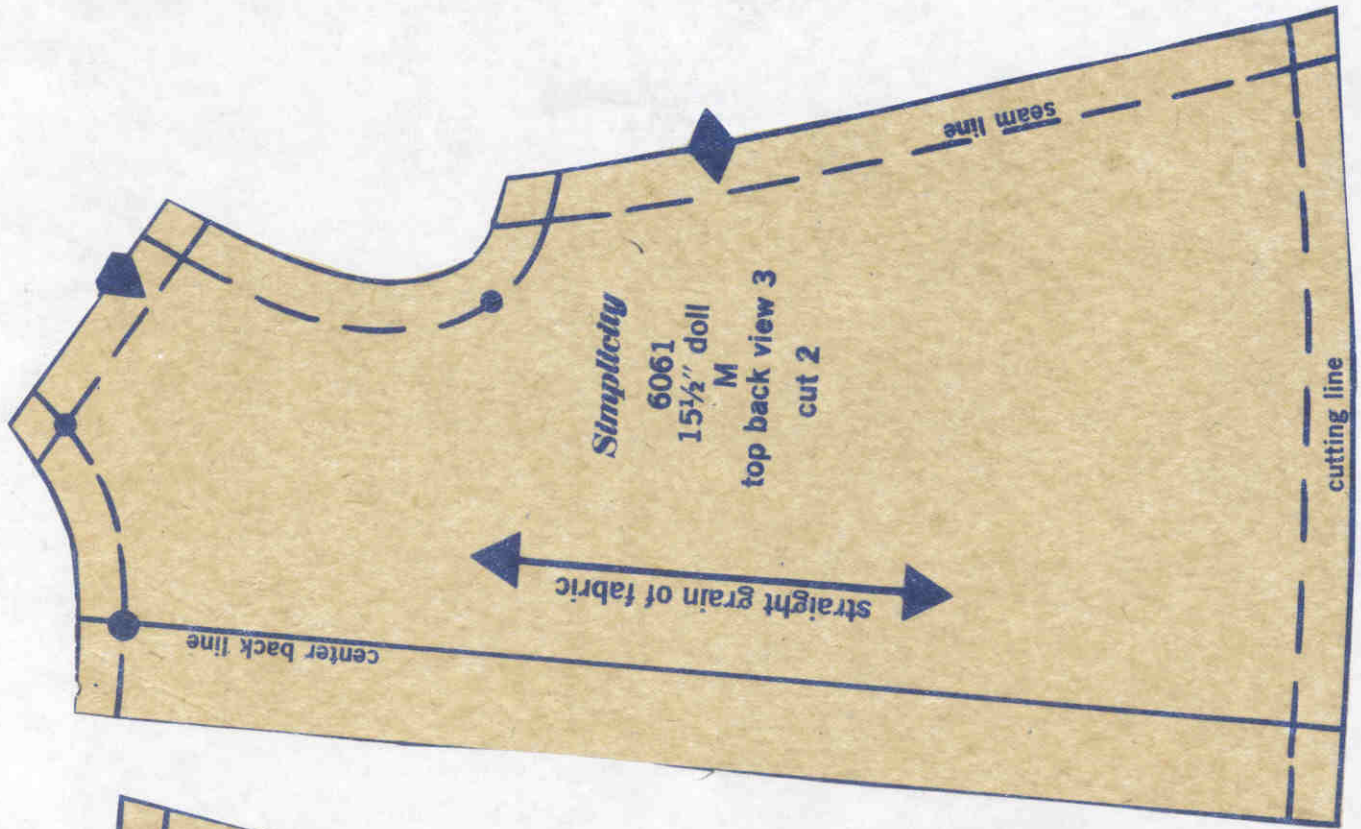
K

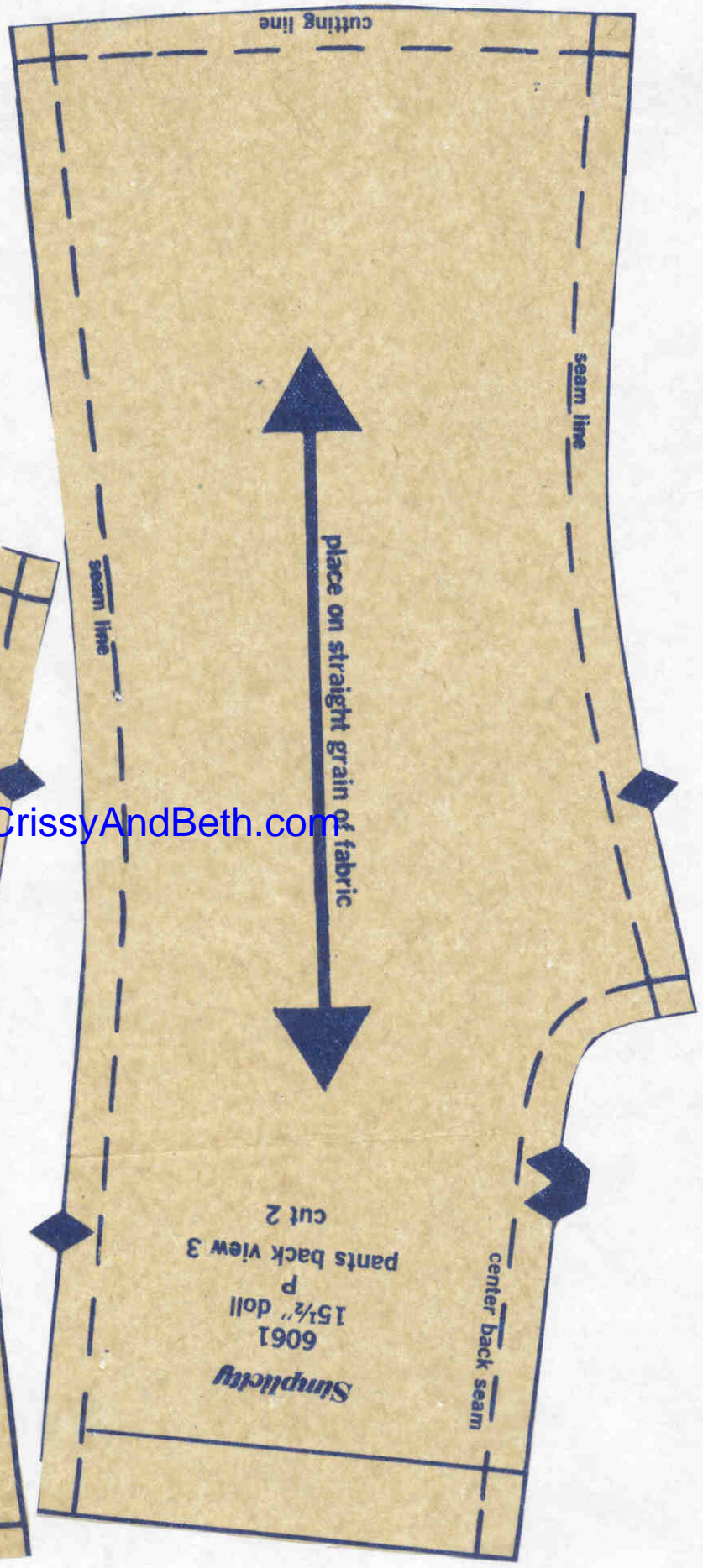
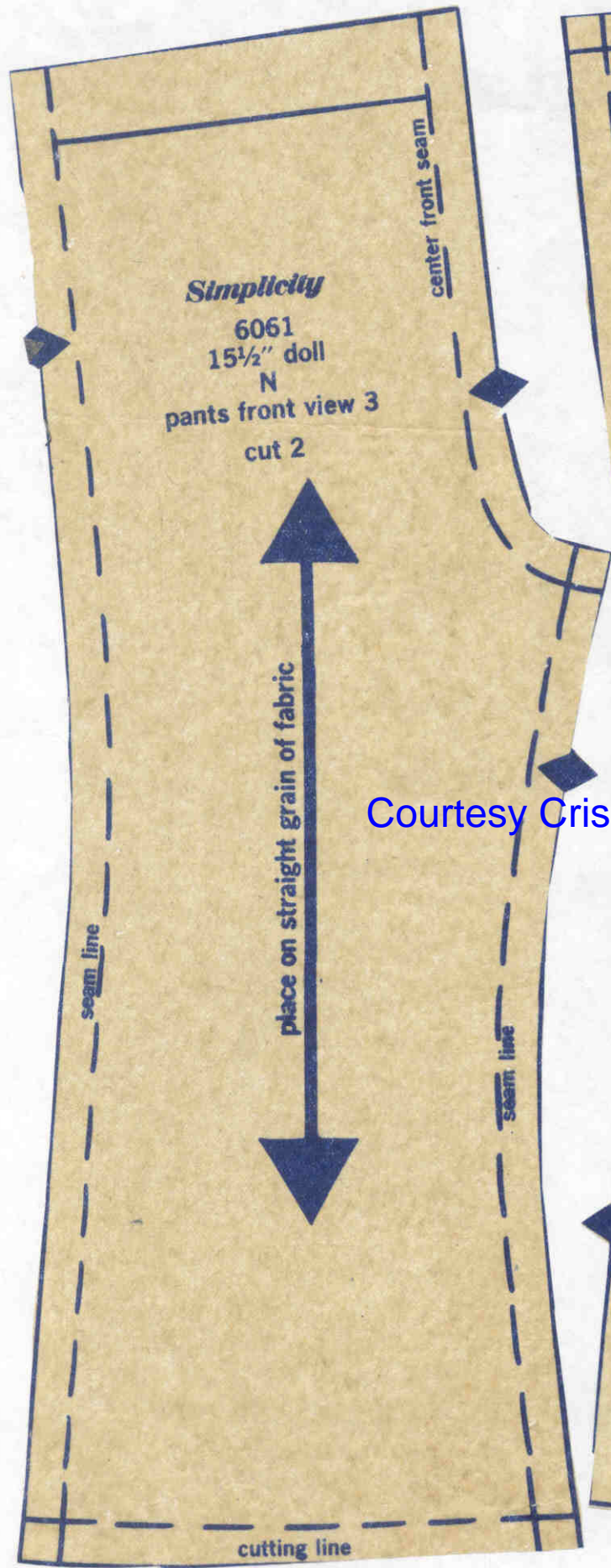
skirt front and

Courtesy CrissyAndBeth.com

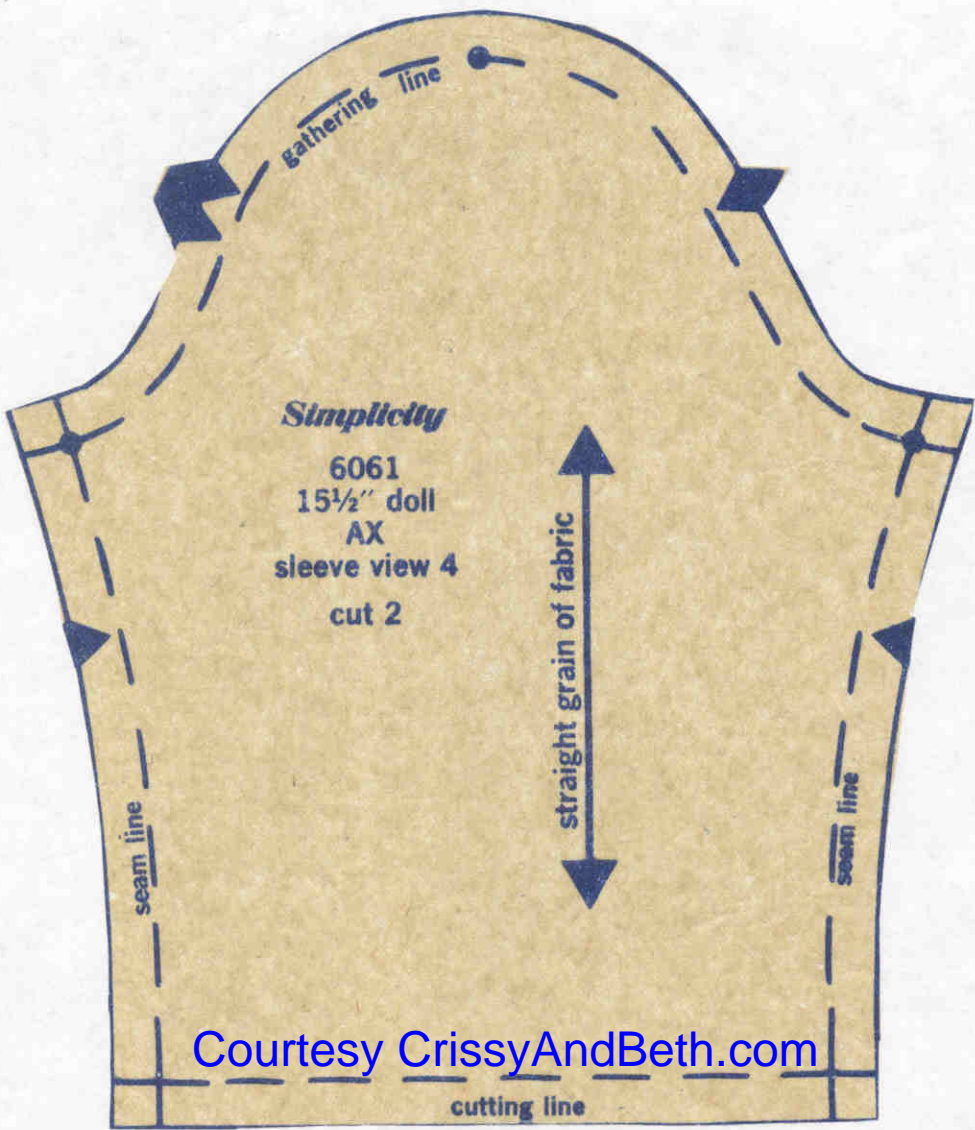
placement for trim

cutting line

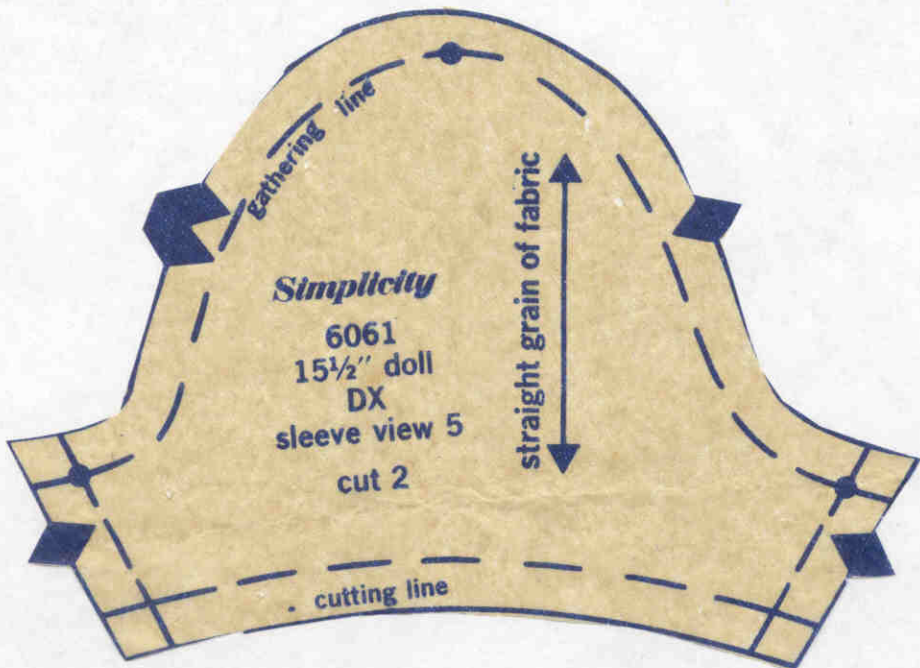


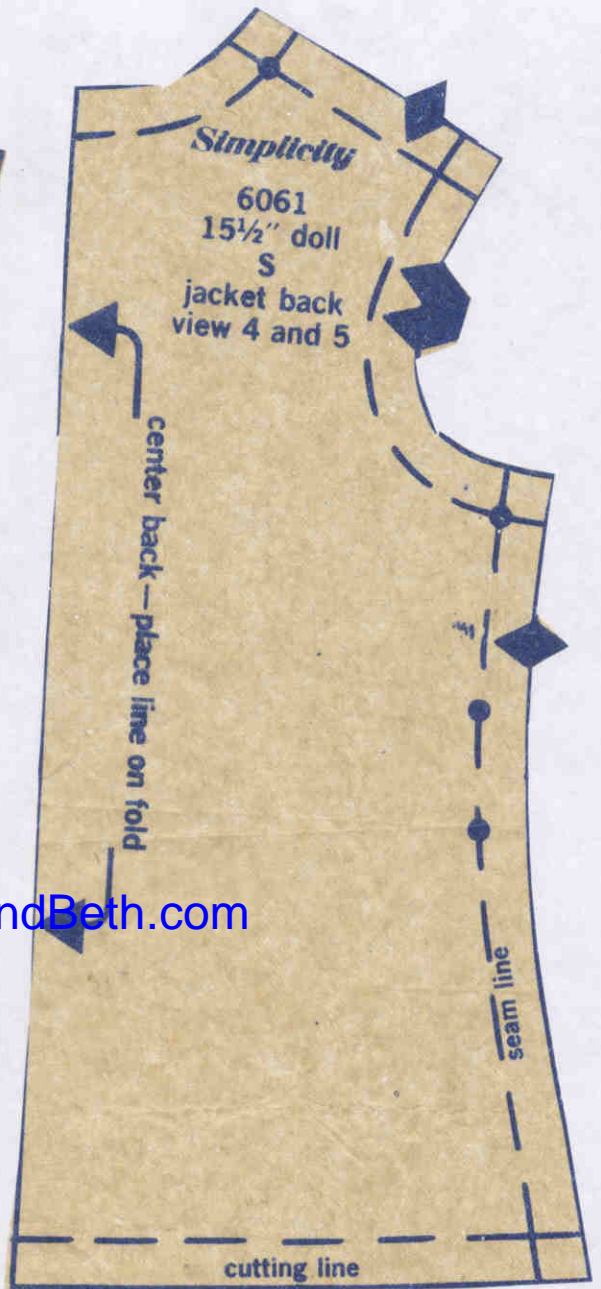
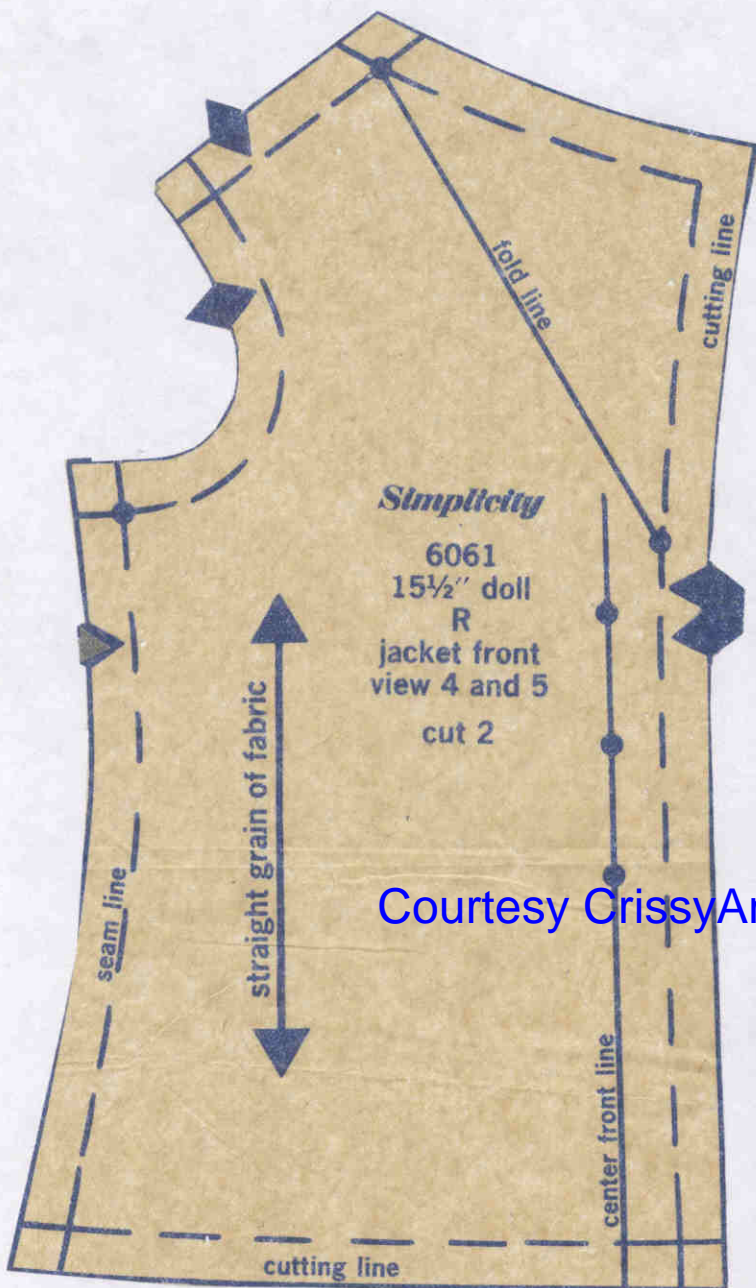


Courtesy CrissyAndBeth.com

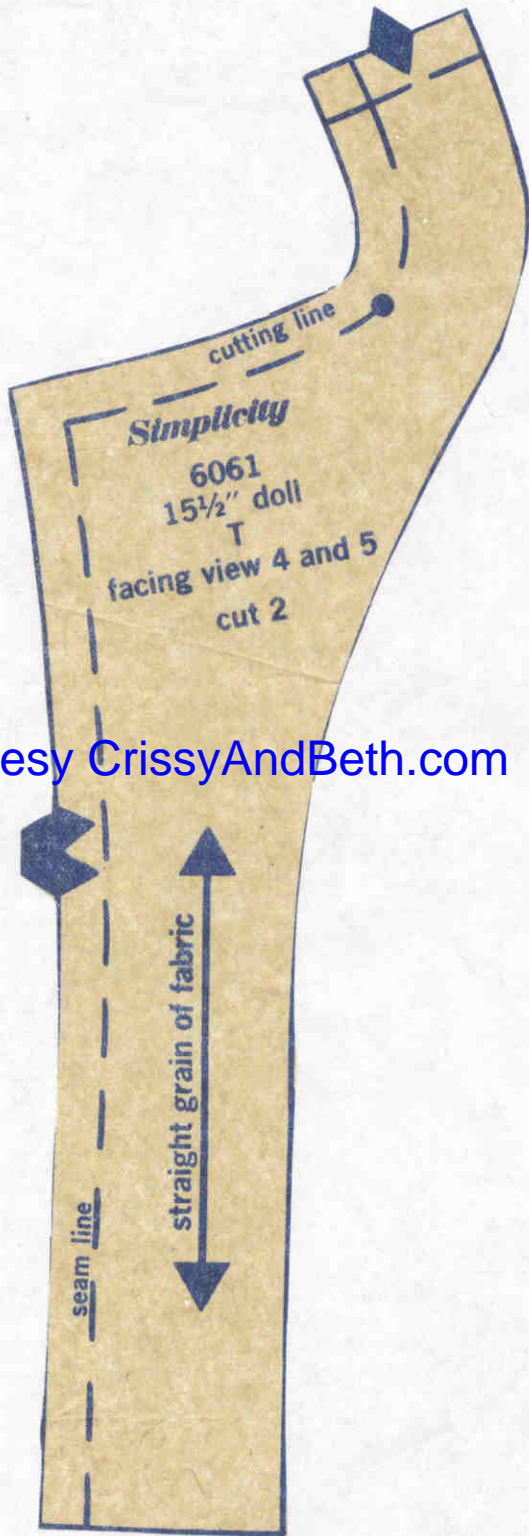


[Courtesy CrissyAndBeth.com](http://CrissyAndBeth.com)

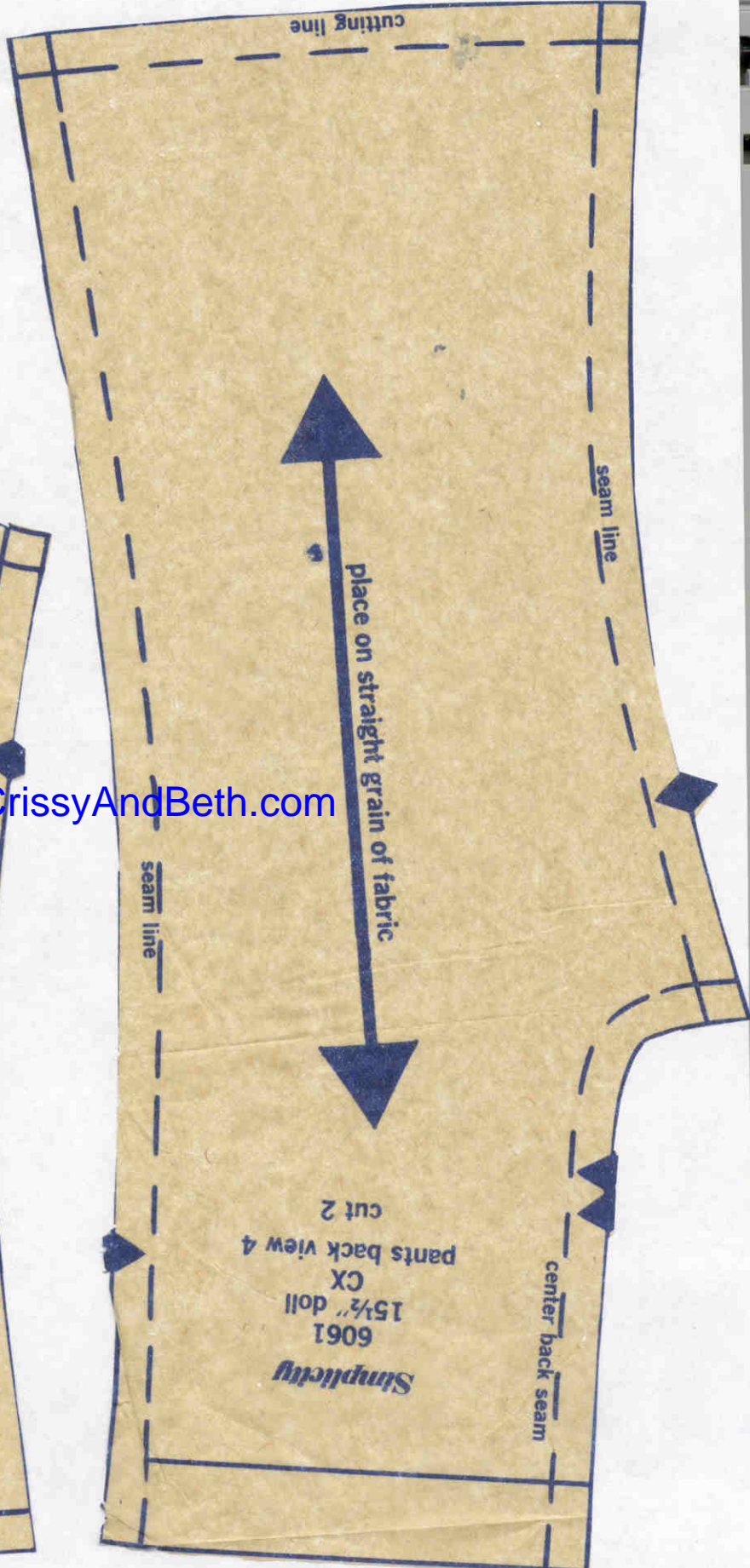
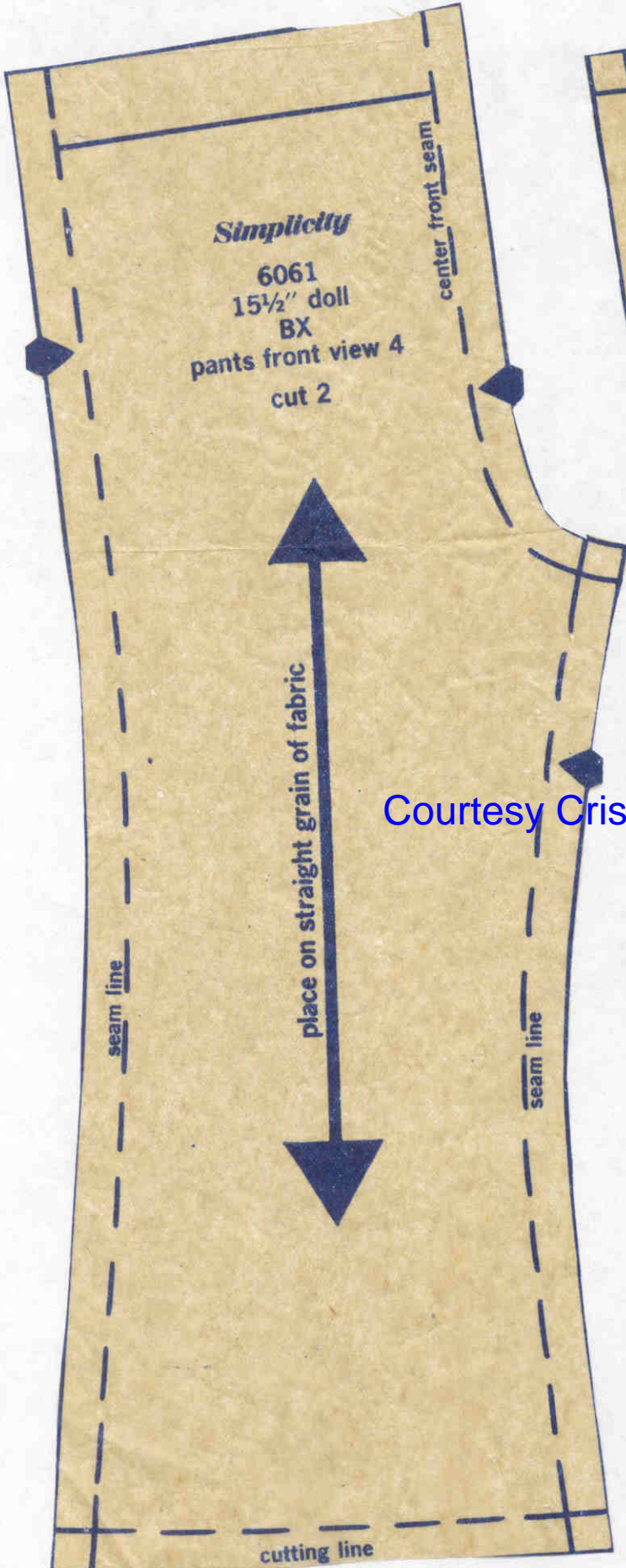




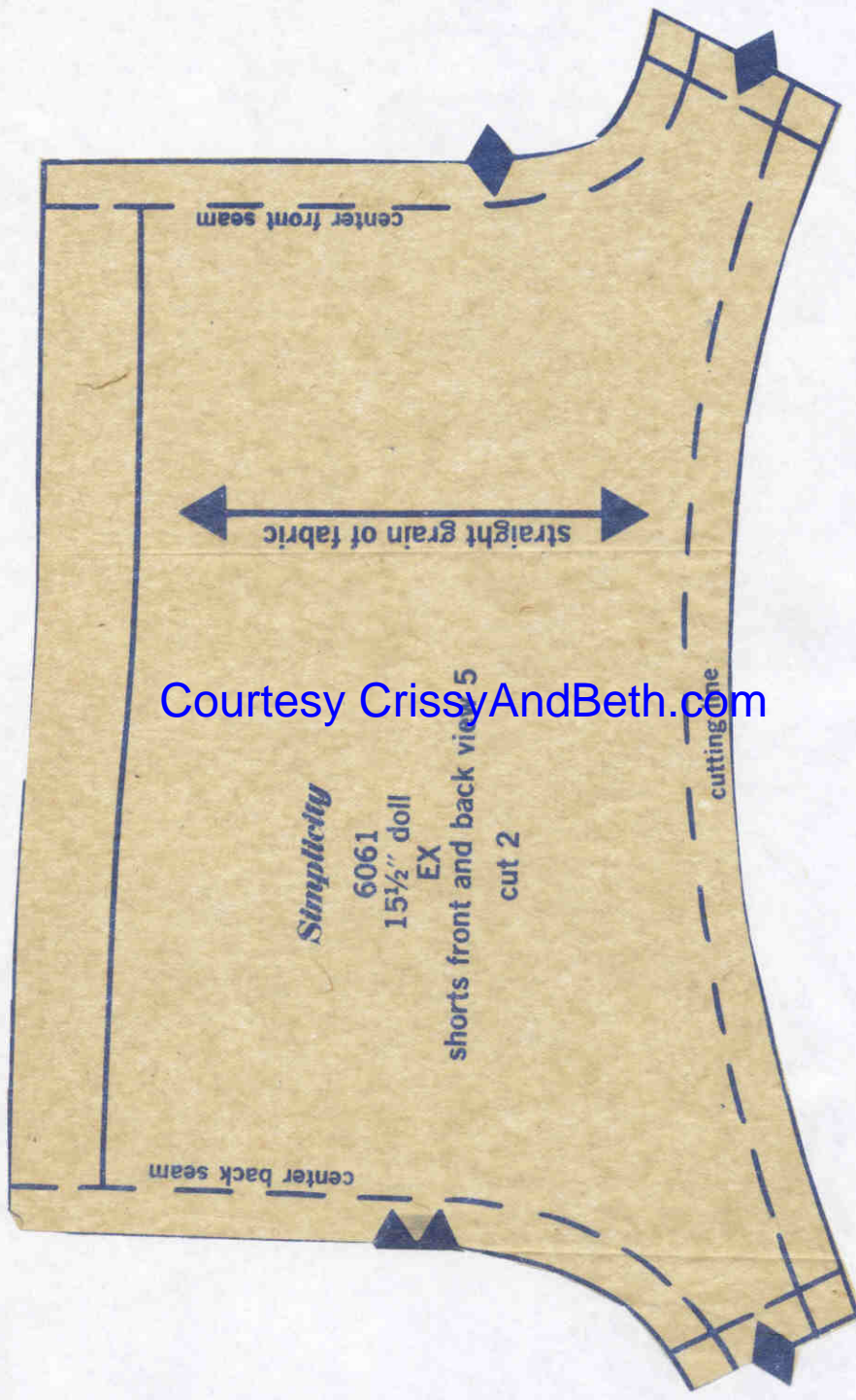
Courtesy CrissyAndBeth.com



Courtesy CrissyAndBeth.com



Courtesy CrissyAndBeth.com



Courtesy CrissyAndBeth.com

Simplicity

6061

15 1/2" doll

EX

shorts front and back view 5

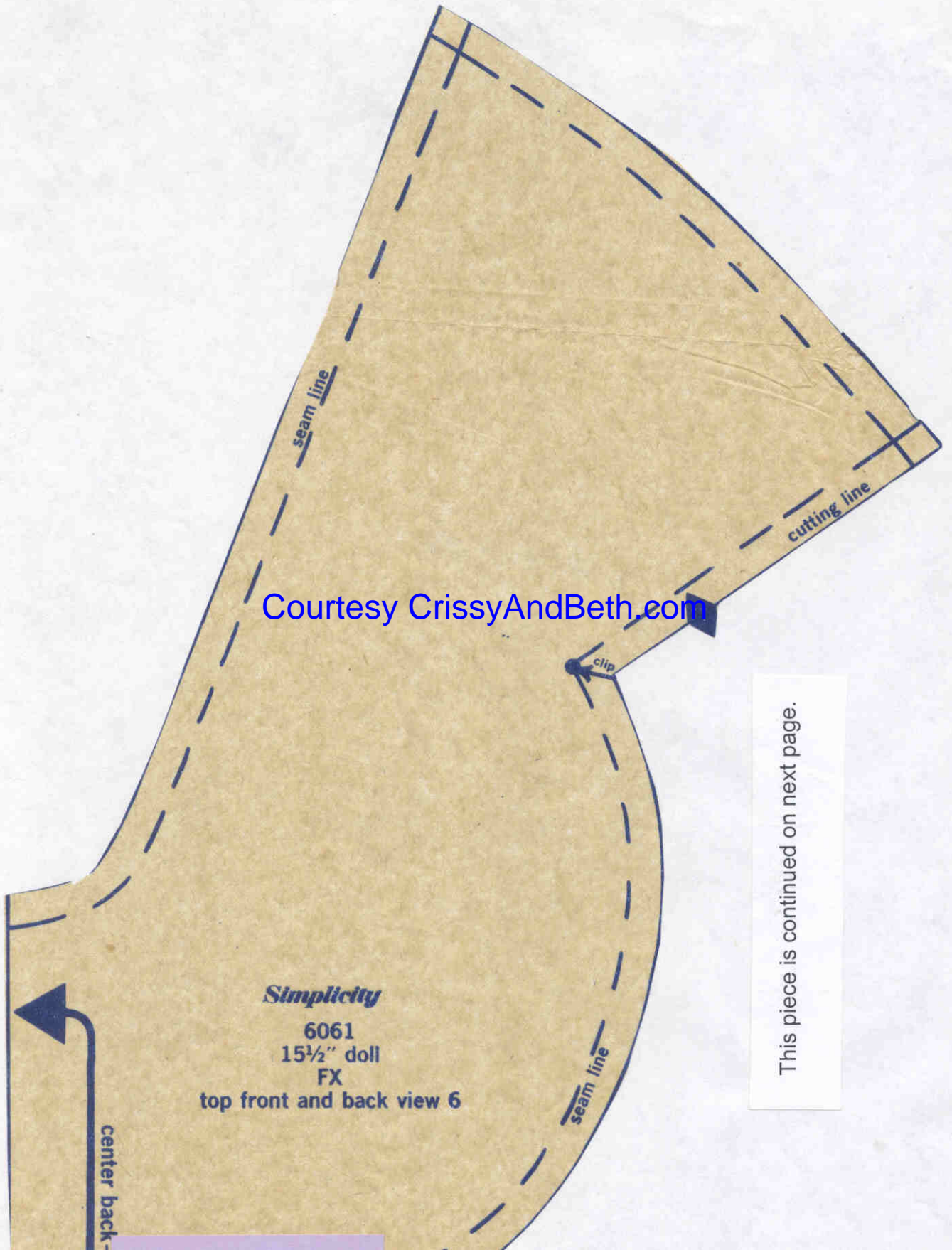
cut 2

center front seam

straight grain of fabric

cutting line

center back seam

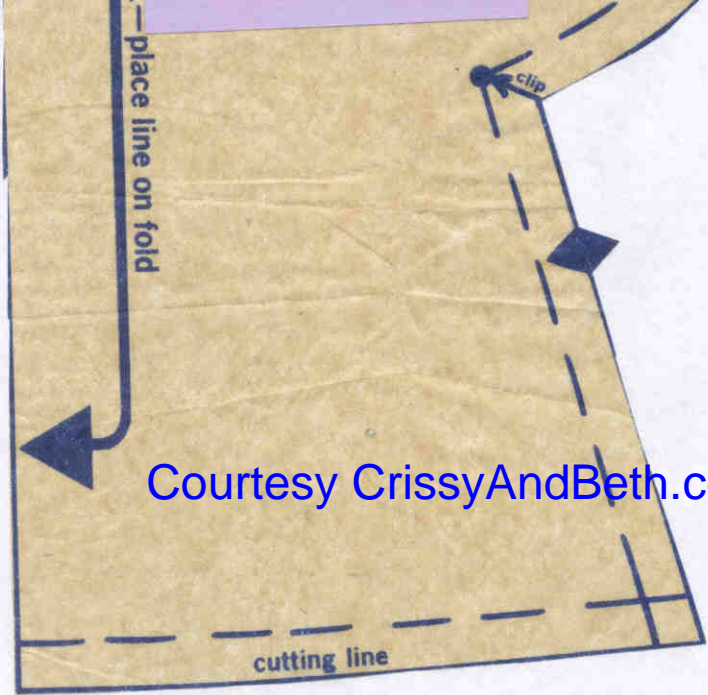


Courtesy CrissyAndBeth.com

Simplicity
6061
15 1/2" doll
FX
top front and back view 6

center back -

This piece is continued on next page.



Courtesy CrissyAndBeth.com

Simplicity
6061
15½" doll
HX
pants back view 6
cut 2

center back seam



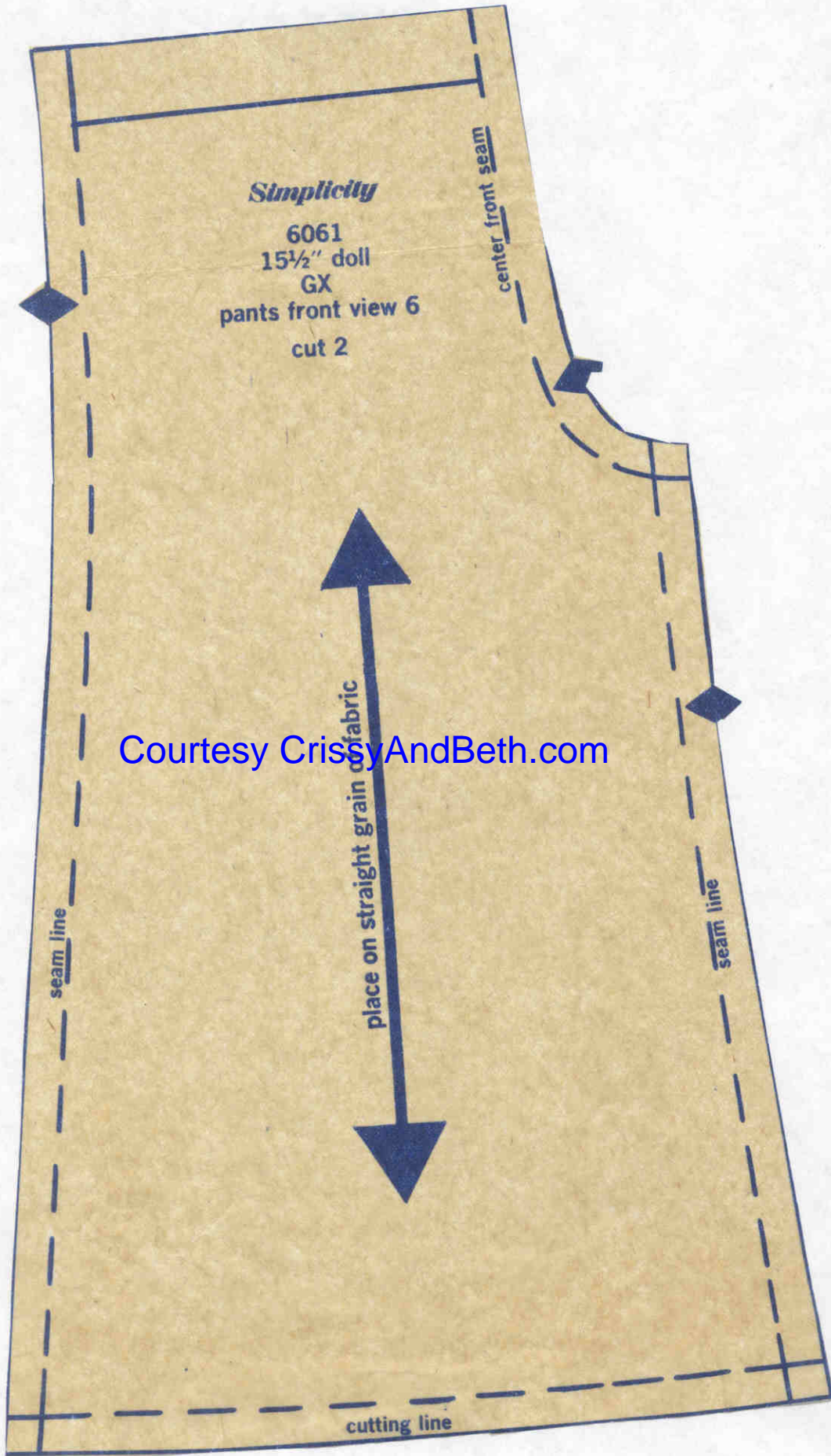
place on straight grain of fabric

seam line

seam line

cutting line

Courtesy GrissyAndBeth.com



Simplicity

6061
15½" doll
GX
pants front view 6
cut 2

center front seam

seam line

seam line

place on straight grain of fabric

cutting line

Courtesy CrissyAndBeth.com