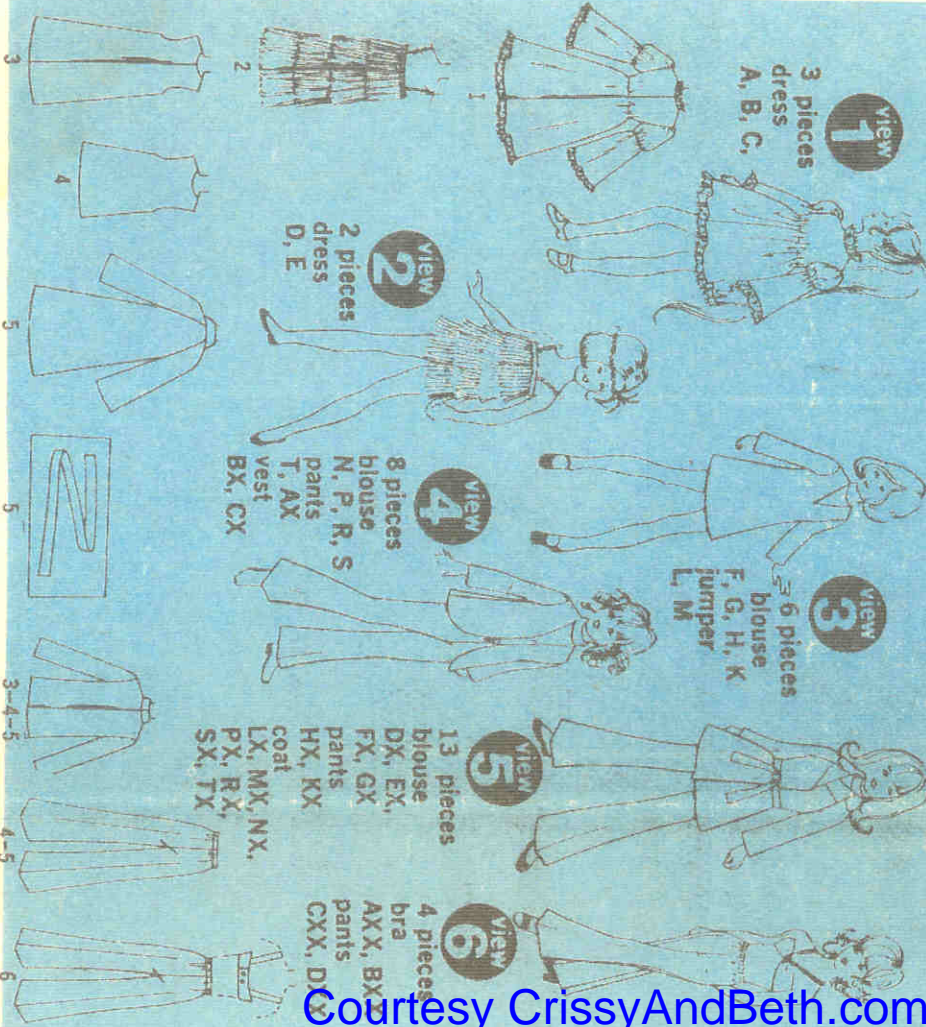


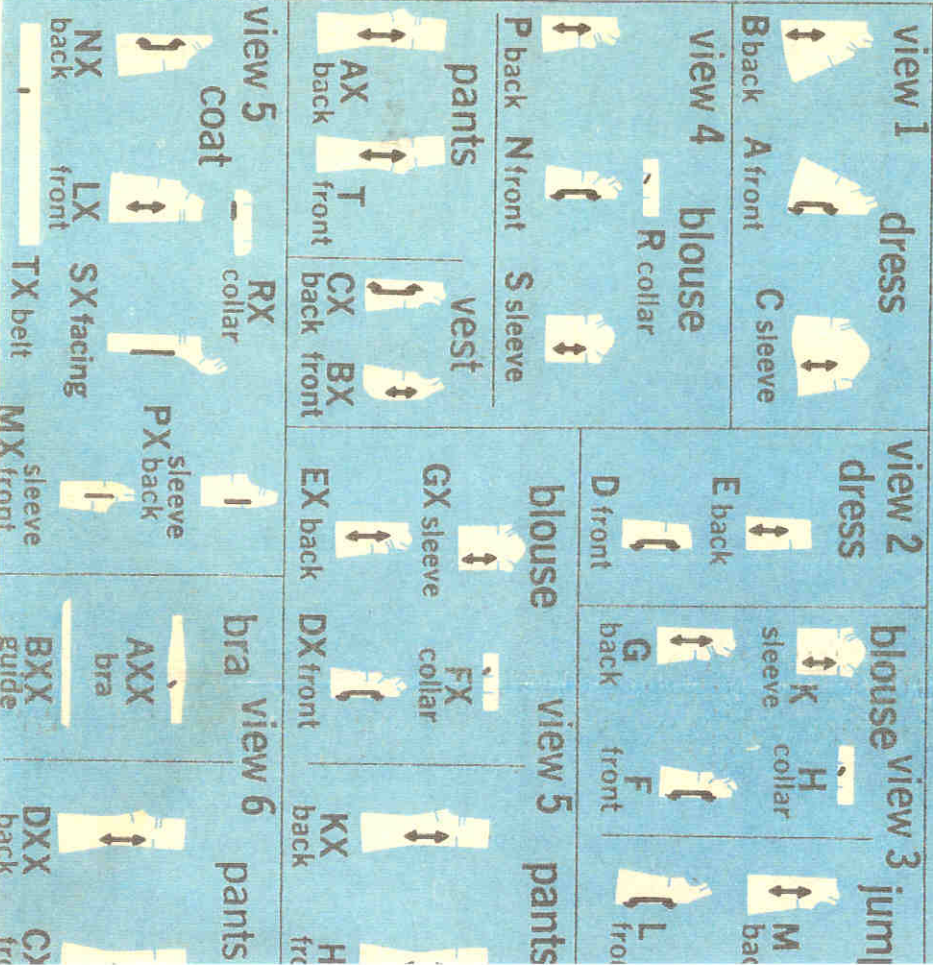
# Simplicity 8519

## cutting and sewing directions



Courtesy CrissyAndBeth.com

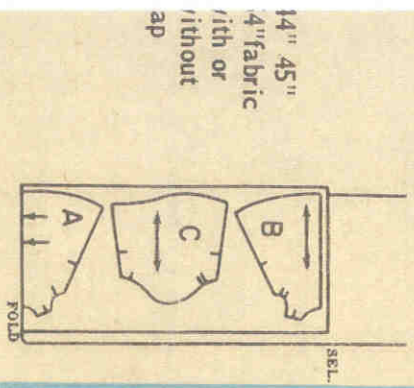
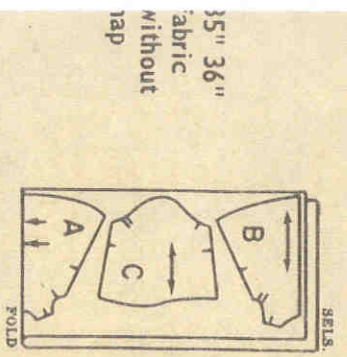
select your  
pattern pieces  
according to the view  
you have chosen  
3-6 pieces given



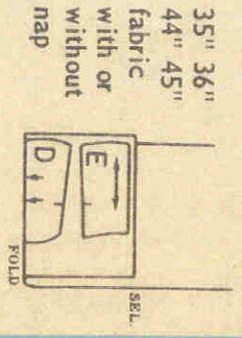
# Cutting Layouts

GENERAL NOTE: When pattern pieces extend beyond fold of fabric, cut out all pieces except pieces that extend; then open out fabric and on single thickness cut extending pieces on right side of fabric in position shown.

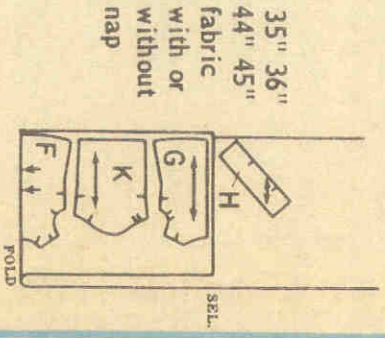
**1** dress



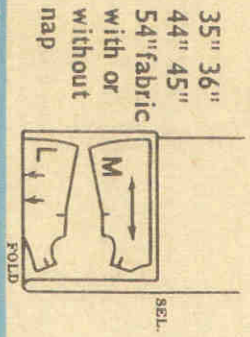
**2** dress



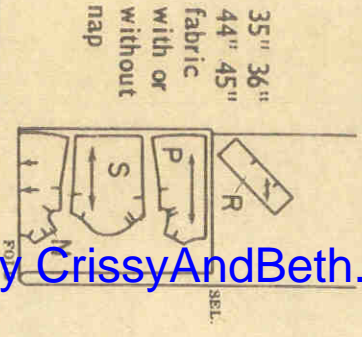
**3** blouse



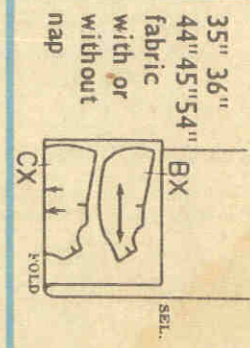
**3** jumper



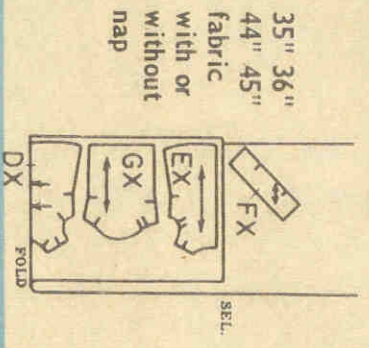
**4** blouse



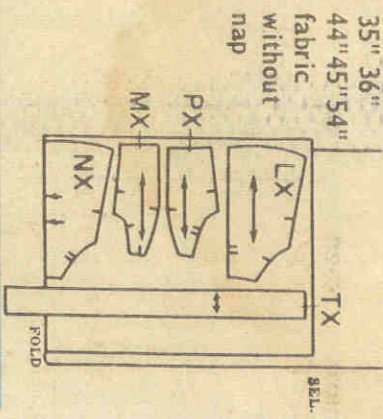
**4** vest



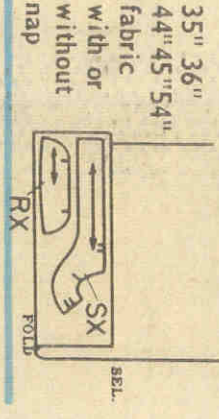
**5** blouse



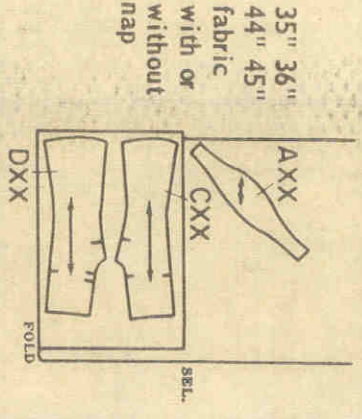
**5** coat



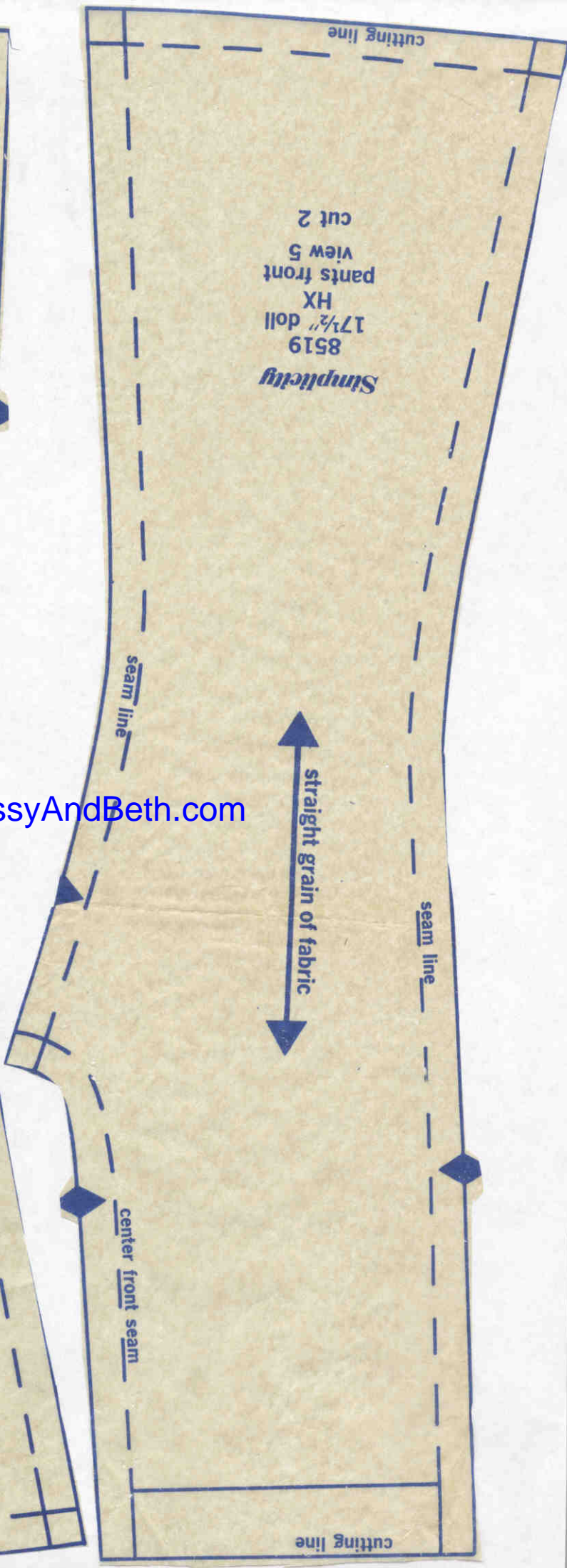
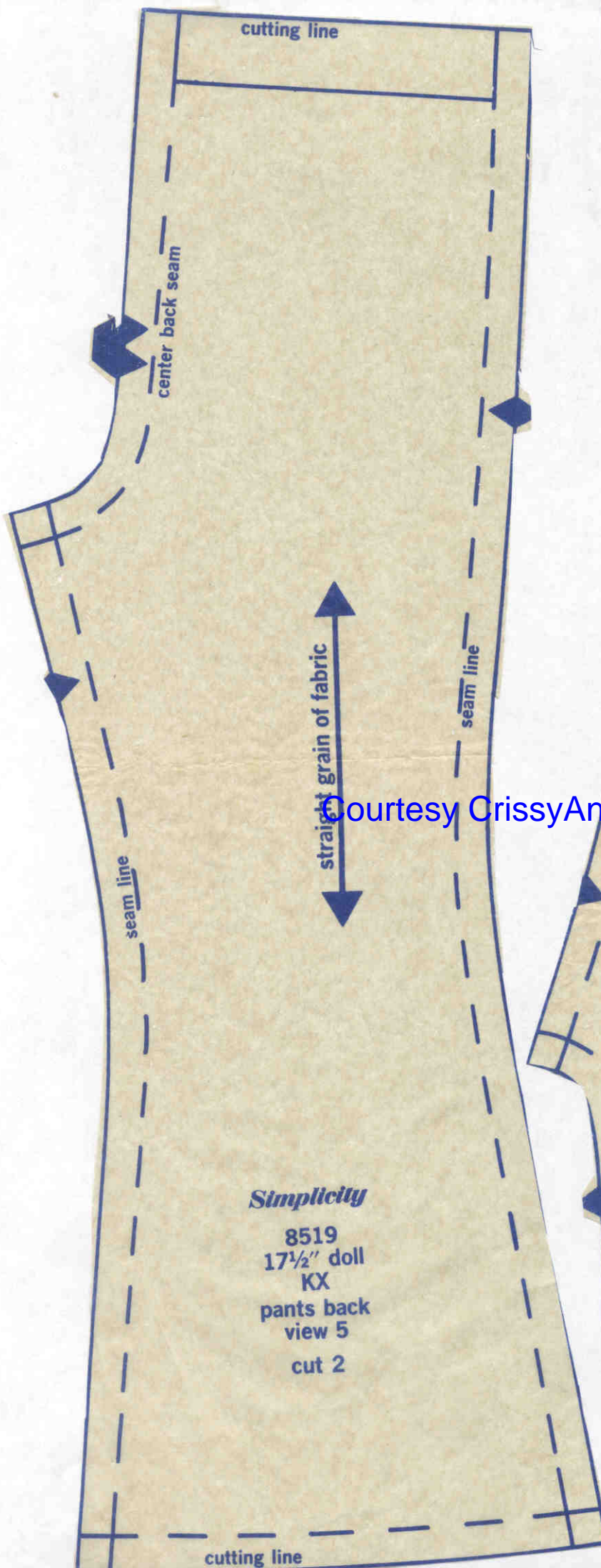
**5** contrasting coat collar and facing sections



**6** bra and pants



Courtesy CrissyAndBeth.com



Courtesy CrissyAndBeth.com

# sewing directions

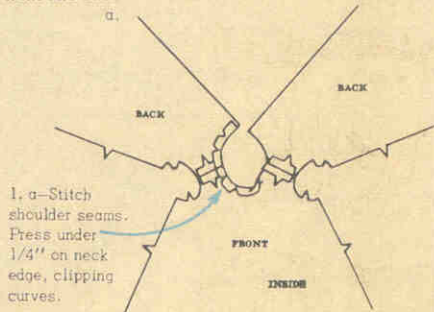
**NOTE:** Stitch in 1/4" seams, matching notches.

Press seams open, unless otherwise instructed.

**NOTE:** To gather or ease, stitch along seam line, using a long machine-stitch.

## VIEW 1 dress

### front and back

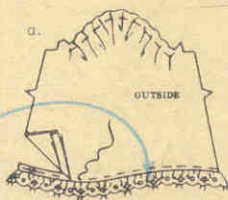


### sleeves

2. a—Press under 1/4" on lower edge.

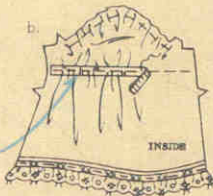
Stitch lower edge over bound edge of lace edging.

Gather top of sleeve between notches.



b—Cut 2 pieces of elastic, each 4" long.

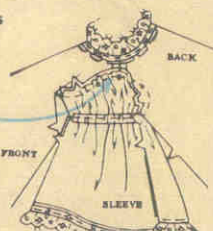
On INSIDE, stitch center of elastic along stitching line, stretching elastic while stitching.



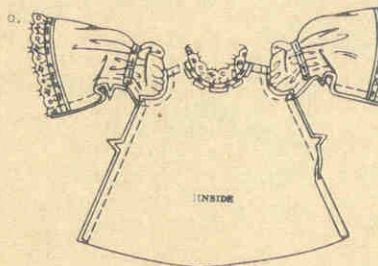
### stitching sleeves to dress

3. With RIGHT sides together, pin sleeve to armhole edge with center small dot ● at shoulder seam, matching remaining small dots ●.

Adjust gathers to fit. Stitch.



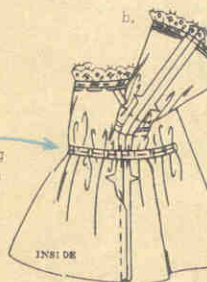
### underarm seams and elastic



4. a—Stitch entire underarm seams.

b—Cut a piece of elastic, 7-5/8" long.

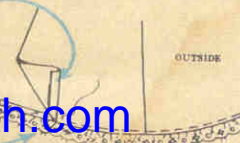
On INSIDE, stitch center of elastic along stitching line between small dots ●, stretching elastic while stitching.



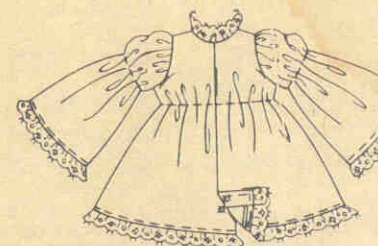
### lace edging

5. Press under 1/4" on lower edge.

Stitch lower edge over bound edge of lace edging.

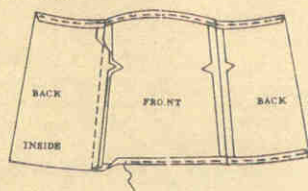


### finishing



## VIEW 2 dress

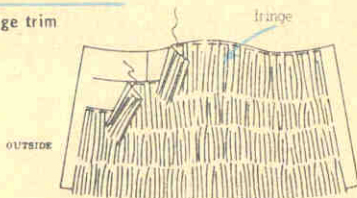
### front and back



1. Stitch side seams. Stitch under 1/4" on upper and lower edges.

## 8519 sewing directions continued from other side

### fringe trim



2. On **OUTSIDE**, stitch straight edge of fringe along solid lines, turning under ends at center back. Stitch another row of fringe along upper edge, having edges even, turning under ends at center back.

### finishing

3. Stitch **RIGHT** back edge to **INSIDE** along center back line.

Lap **RIGHT** back over **LEFT**, matching centers; fasten with snaps.



### shoulder straps

4. To make shoulder straps, cut 2 pieces of rhinestone trim or ribbon, each 4-3/8" long.

On **INSIDE**, sew ends of each piece to underarm edge of dress at small dots.



### headband

5. Cut a piece of rhinestone trim or ribbon 11" long.

Sew ends together.

A feather may be tacked to headband.



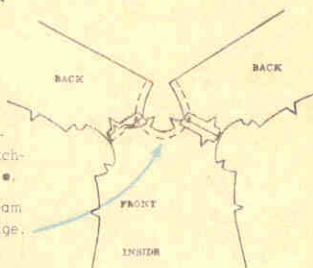
view  
3

## blouse and jumper blouse

### front and back

1. Stitch shoulder seams, matching small dots.

Stitch along seam line at neck edge.



### collar

2. a—Fold collar in half lengthwise, with **RIGHT** sides together. Stitch ends. Trim corners.



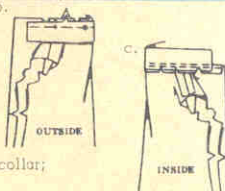
b—Clip blouse neck edge b.

to stitching.

On **OUTSIDE**, pin collar to neck edge, matching centers and small dots. Stitch.

Clip curves.

c—Press seam away from collar; stitch along seam.



### sleeves

3. Ease top of sleeve between notches.

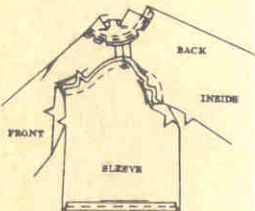
Stitch under 1/4" on lower edge.



### stitching sleeves to blouse

4. With **RIGHT** sides together, pin sleeve to armhole edge with small dot at shoulder seam.

Pull up stitching to fit. Stitch. Press seam toward sleeve.



### underarm seams

5. Stitch entire underarm seams. Stitch under 1/4" on lower edge.



### finishing

6. Stitch **RIGHT** back edge to **INSIDE** along center line. Lap **RIGHT** back over **LEFT**, matching centers; fasten with snaps.



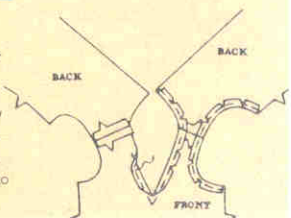
## jumper

**NOTE:** For **FUR FABRIC** - it is impossible to press seams and edges and achieve a sharp line. Therefore, do not press but rather place a cloth over seams and edges and pound them with a heavy object. After stitching and pounding, on **OUTSIDE**, with a pin, pick the pile up along the seams and edges.

### front and back

1. Stitch shoulder seams.

Stitch under 1/4" on neck and armhole edges, clipping curves and to center front.

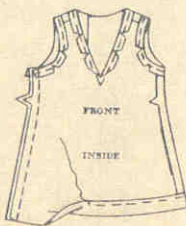


### side seams and hem

2. Stitch side seams.

Press up hem.

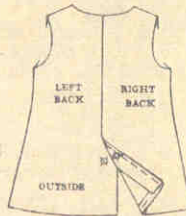
Stitch, easing in fulness.



### finishing

3. Stitch RIGHT back edge to INSIDE along center back line.

Lap RIGHT back over LEFT, matching centers; fasten with snaps.



view 4

## blouse, pants and vest

Make blouse same as view 3.

### pants

#### center and side seams

1. Stitch center front and center back seams.

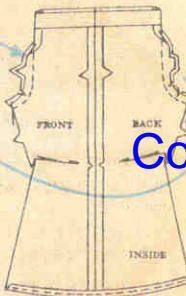
Clip curves.

Stitch side seams.

Clip curves.

Stitch under 1/4" on leg edges.

Press upper edge to INSIDE along solid line.

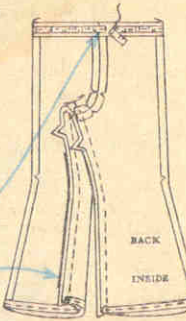


#### elastic and inner leg seam

2. Cut a piece of elastic 7" long.

On INSIDE, stitch center of elastic 1/4" below upper edge, stretching elastic while stitching, lapping ends at center back.

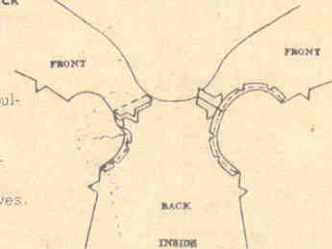
Stitch inner leg seam.



### vest

#### front and back

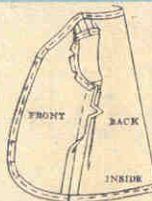
1. Stitch shoulder seams. Stitch under 1/4" on armhole edges, clipping curves.



### side seams

2. Stitch side seams.

Stitch under 1/4" on lower, front and neck edges, clipping curves.



view 5

## blouse, pants and coat

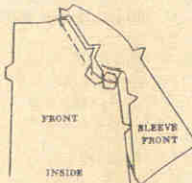
Make blouse same as view 3.  
Make pants same as view 4.

### coat

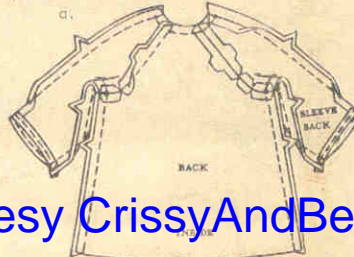
#### front and sleeve front

1. Stitch front to sleeve front, matching small dots.

Clip curves.



#### back, sleeve back and seams

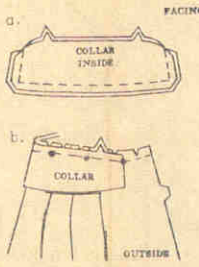


2. a—Stitch back to sleeve back, matching small dots. Clip curves. Stitch shoulder seams, matching small dots. Stitch along seam line at entire neck edge. Stitch under 1/4" on lower edges of sleeves. Stitch entire underarm seams.

#### collar

3. a—With RIGHT sides together, stitch facing to collar, leaving notched edges open. Trim corners.

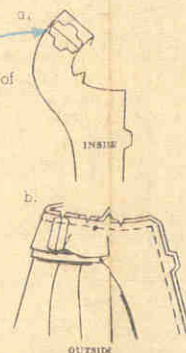
b—Turn collar; press. Clip coat neck edge to stitching. On OUTSIDE, pin collar to neck edge, matching centers and small dots. Baste.



#### facing and hem

4. a—Stitch center back seam of facing.

b—With RIGHT sides together, pin facing to coat, matching centers back and small dots. Stitch front and neck edges. Trim corners; clip curves.

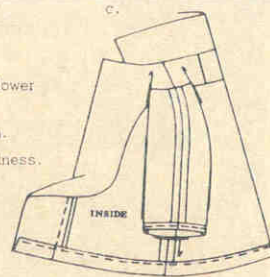


c—Press facings to INSIDE.

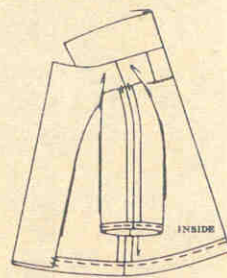
Open out facing at lower edges.

Press up entire hem.

Stitch, easing in fulness.



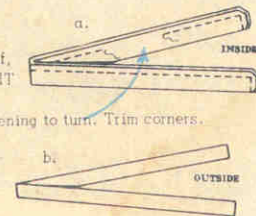
d—Tack facing to seams and hem.



### belt

5. a—Fold belt in half, lengthwise with RIGHT sides together. Stitch, leaving an opening to turn. Trim corners.

b—Turn belt; press. Slip-stitch opening.



view 6

## bra and pants



#### preparing bra

1. Stitch under 1/4" on all edges of bra.

#### shoulder straps

2. Cut 1 by BXX of 1/4" wide ribbon.

Transfer markings.

Tie ribbon around center of bra, having ends extend evenly.

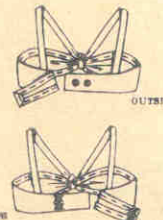
On INSIDE, sew ends of ribbon to upper edge of bra, matching small and medium dots.



#### finishing

3. Sew buttons to RIGHT back at small dots.

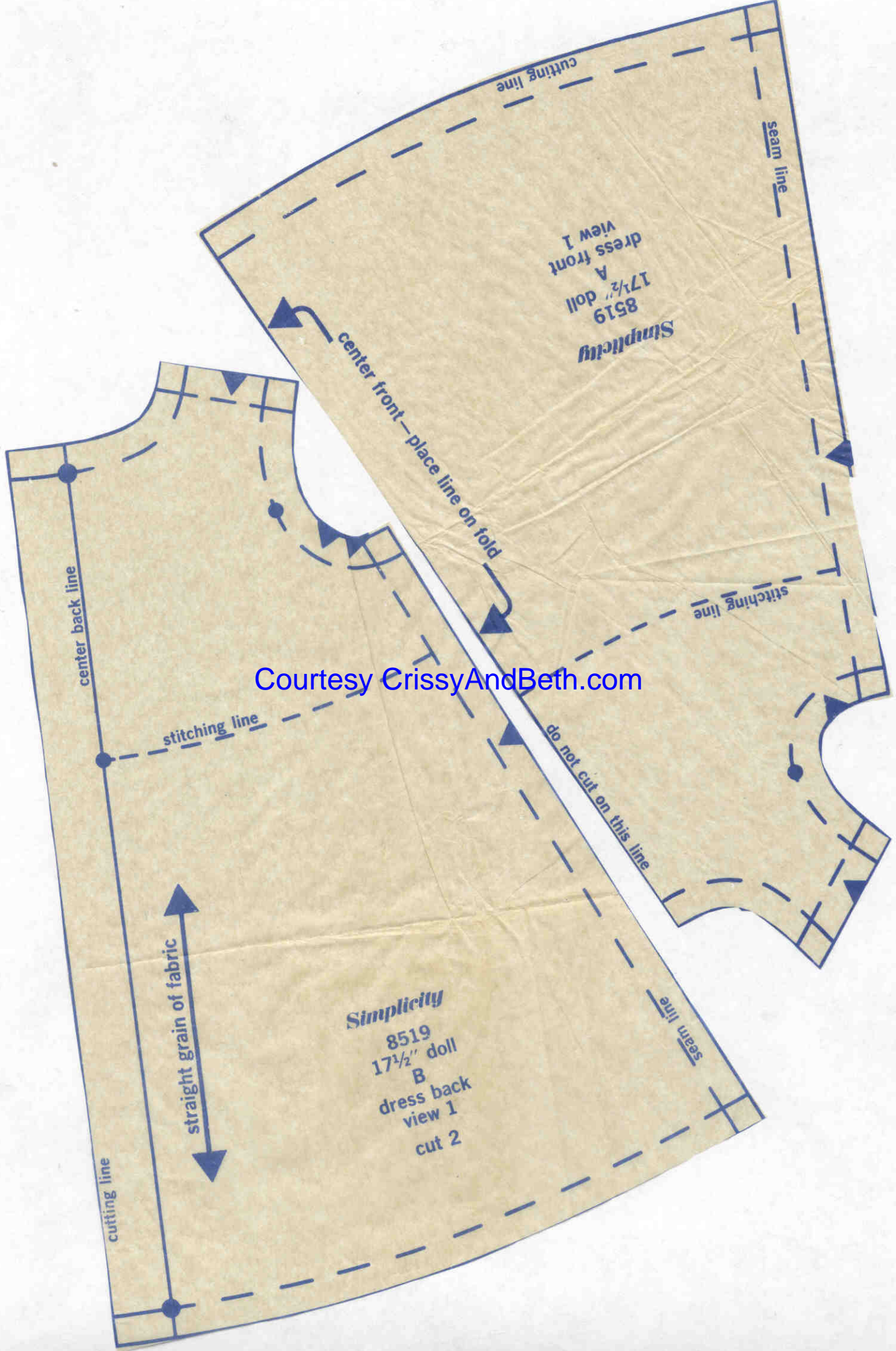
Lap RIGHT back over LEFT, matching centers; fasten with snaps under buttons.



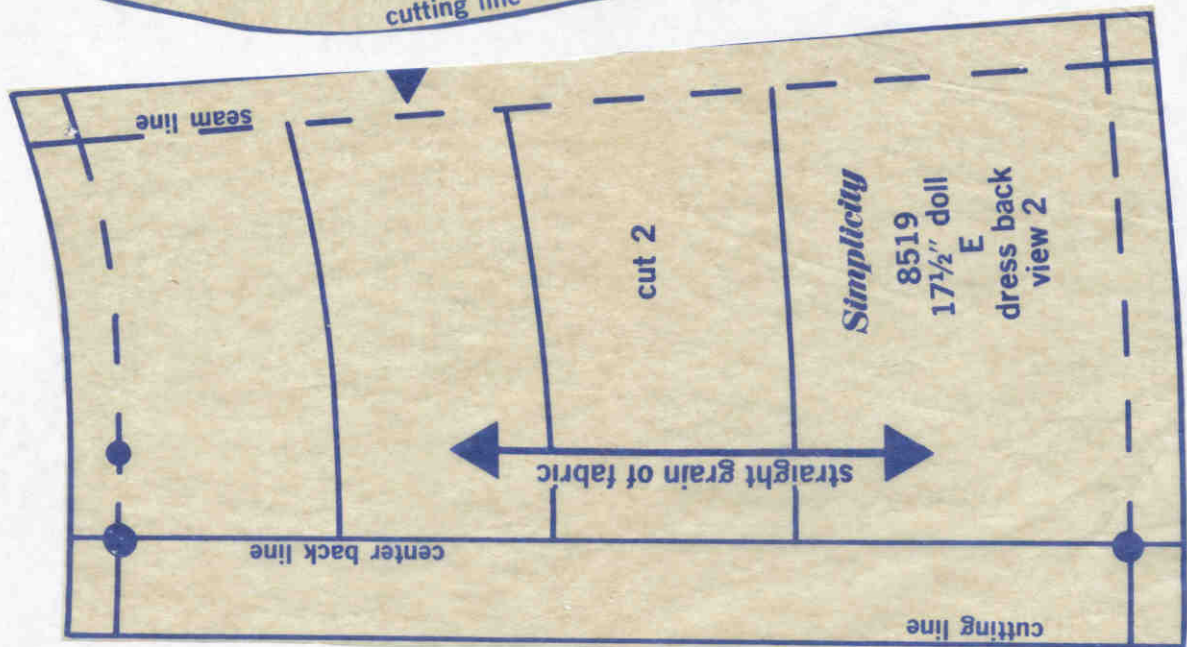
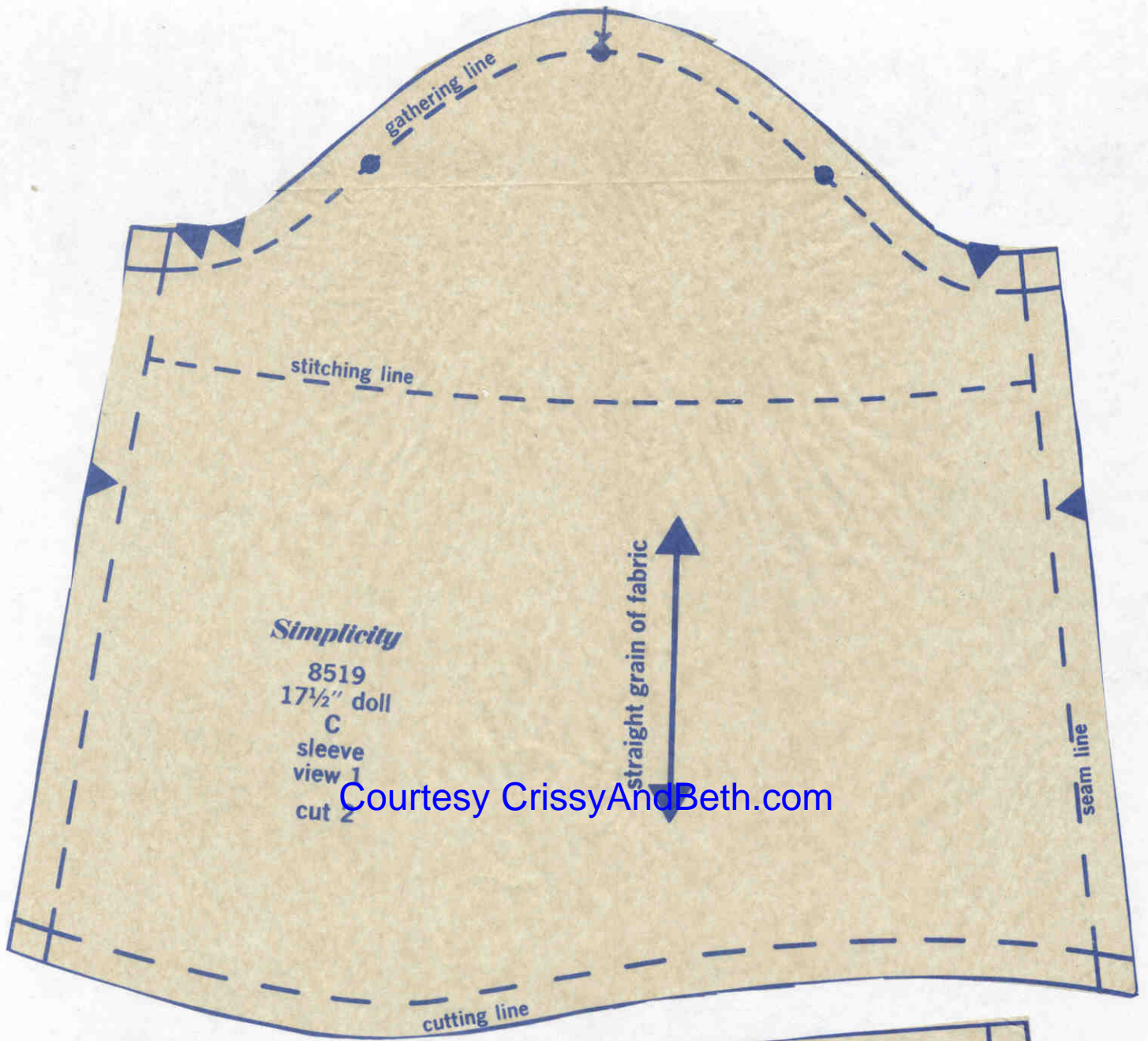
### pants

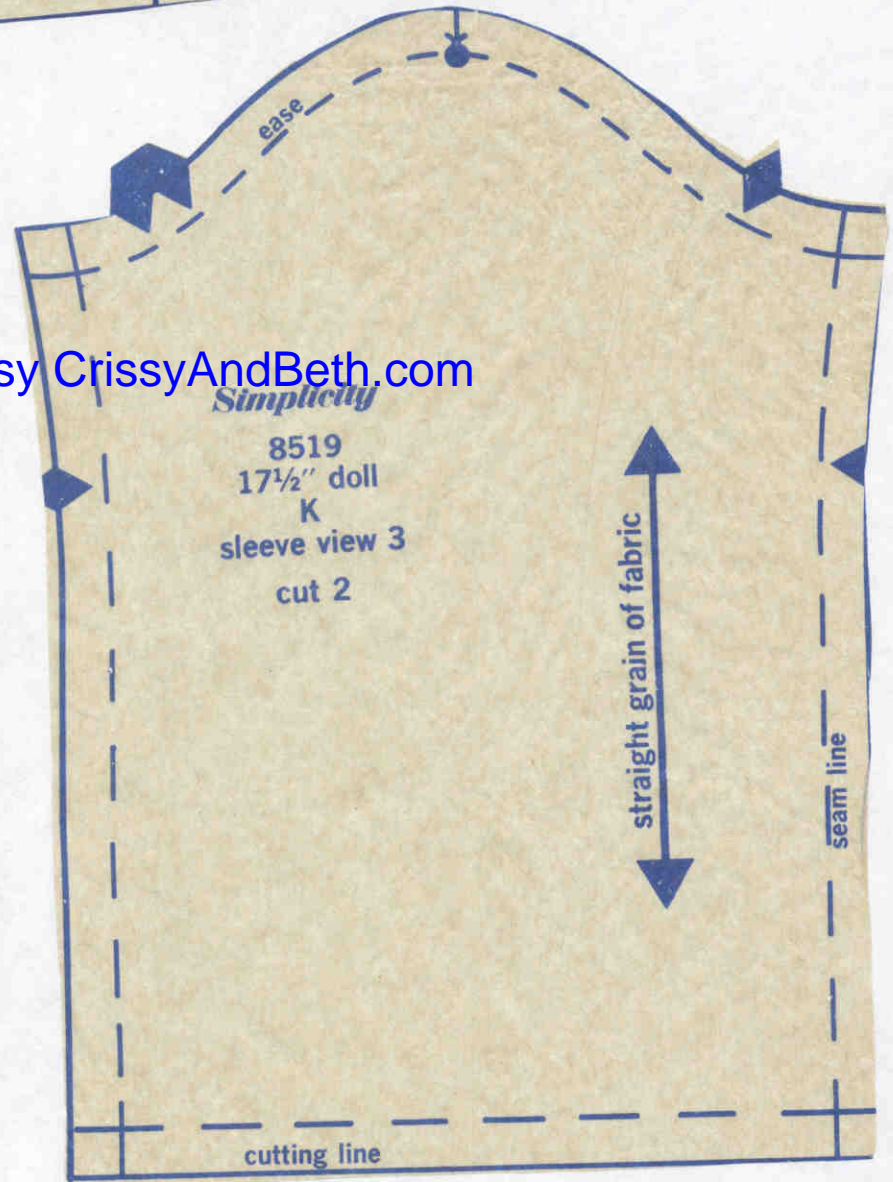
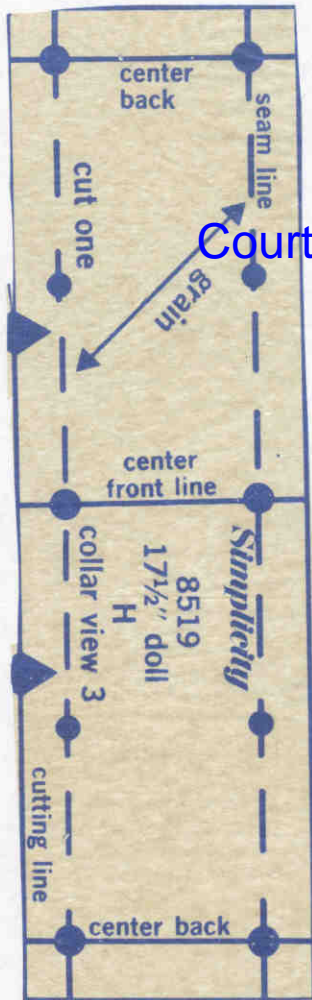
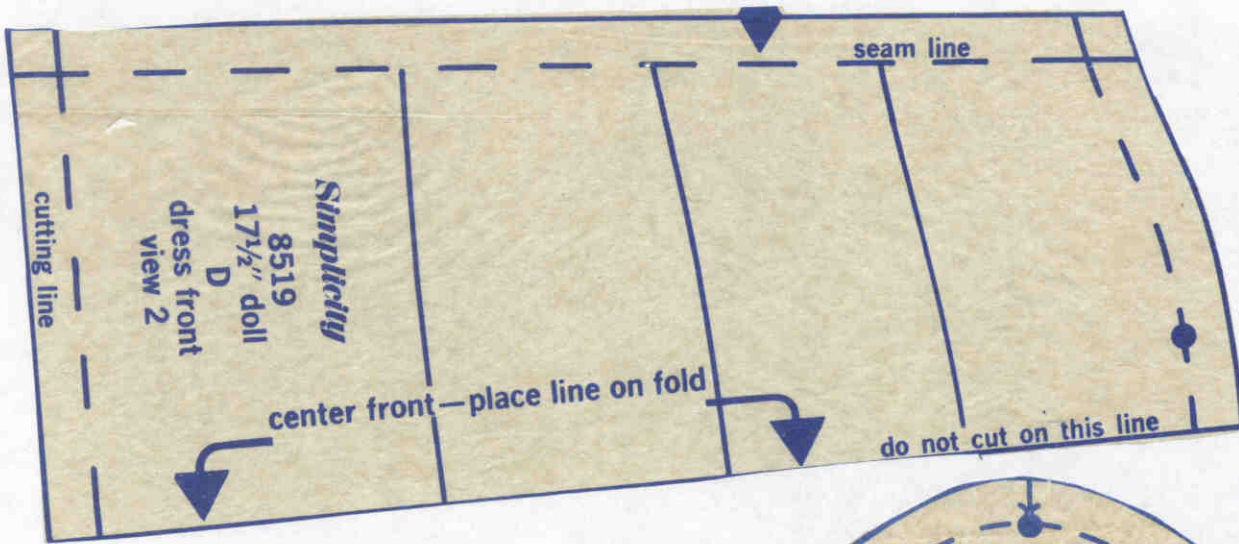
Make pants same as view 4.

Courtesy CrissyAndBeth.com

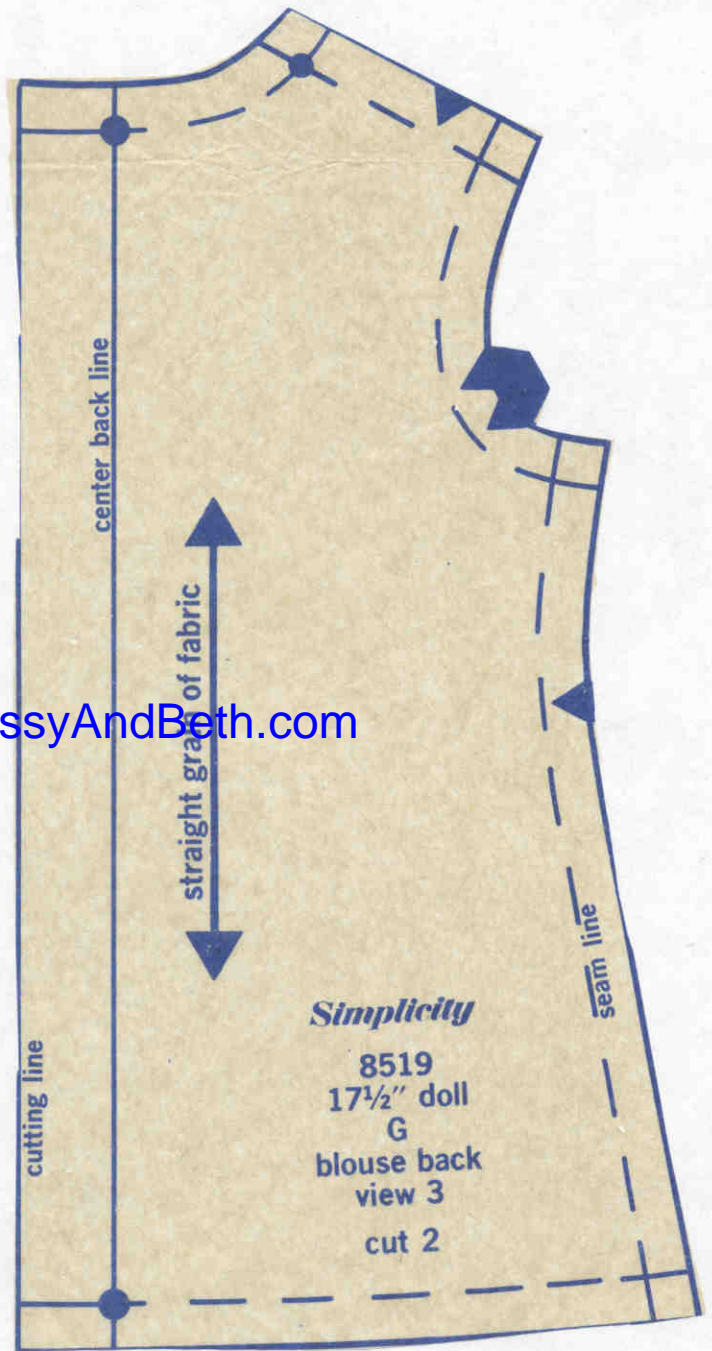
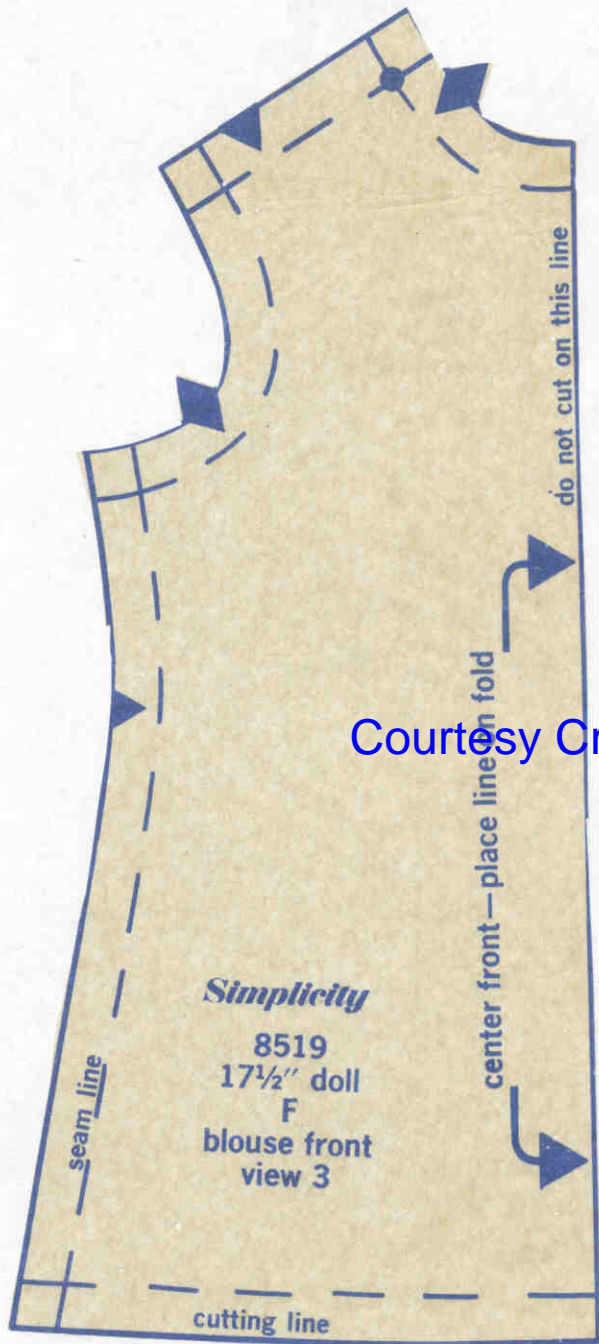


Courtesy CrissyAndBeth.com

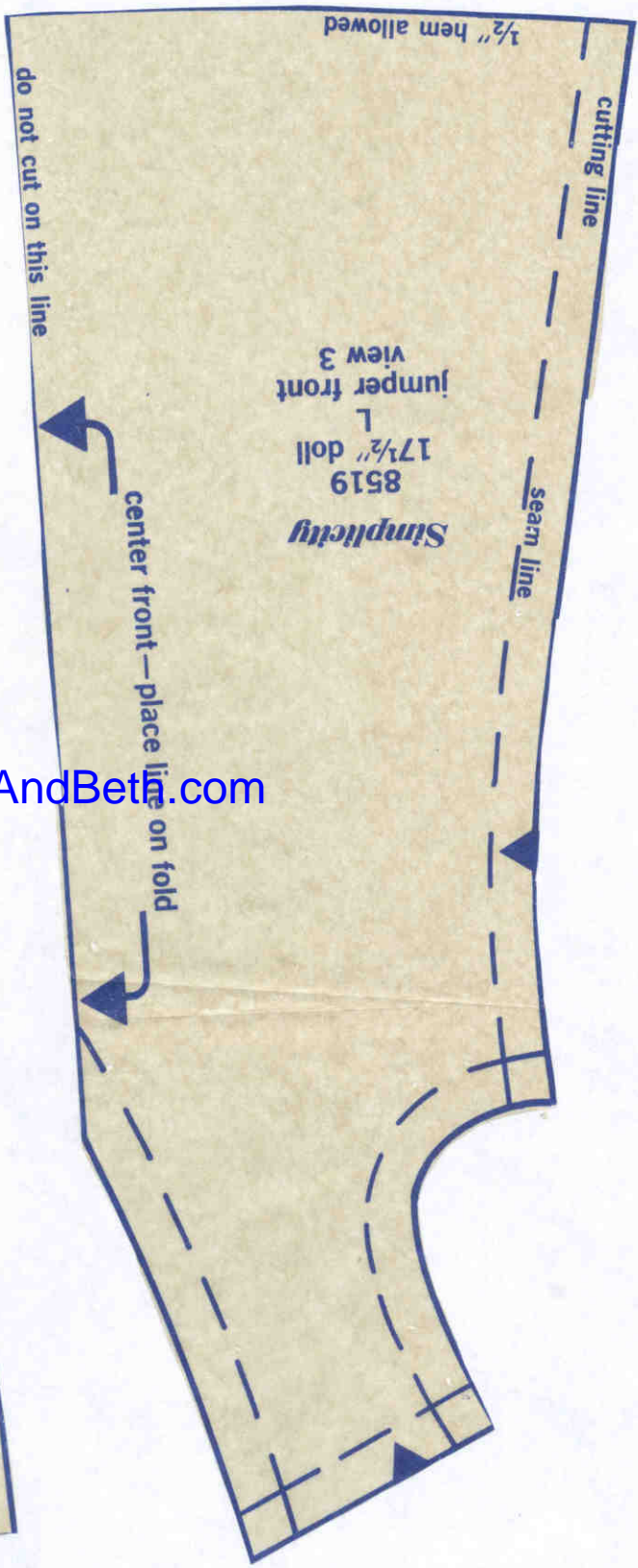
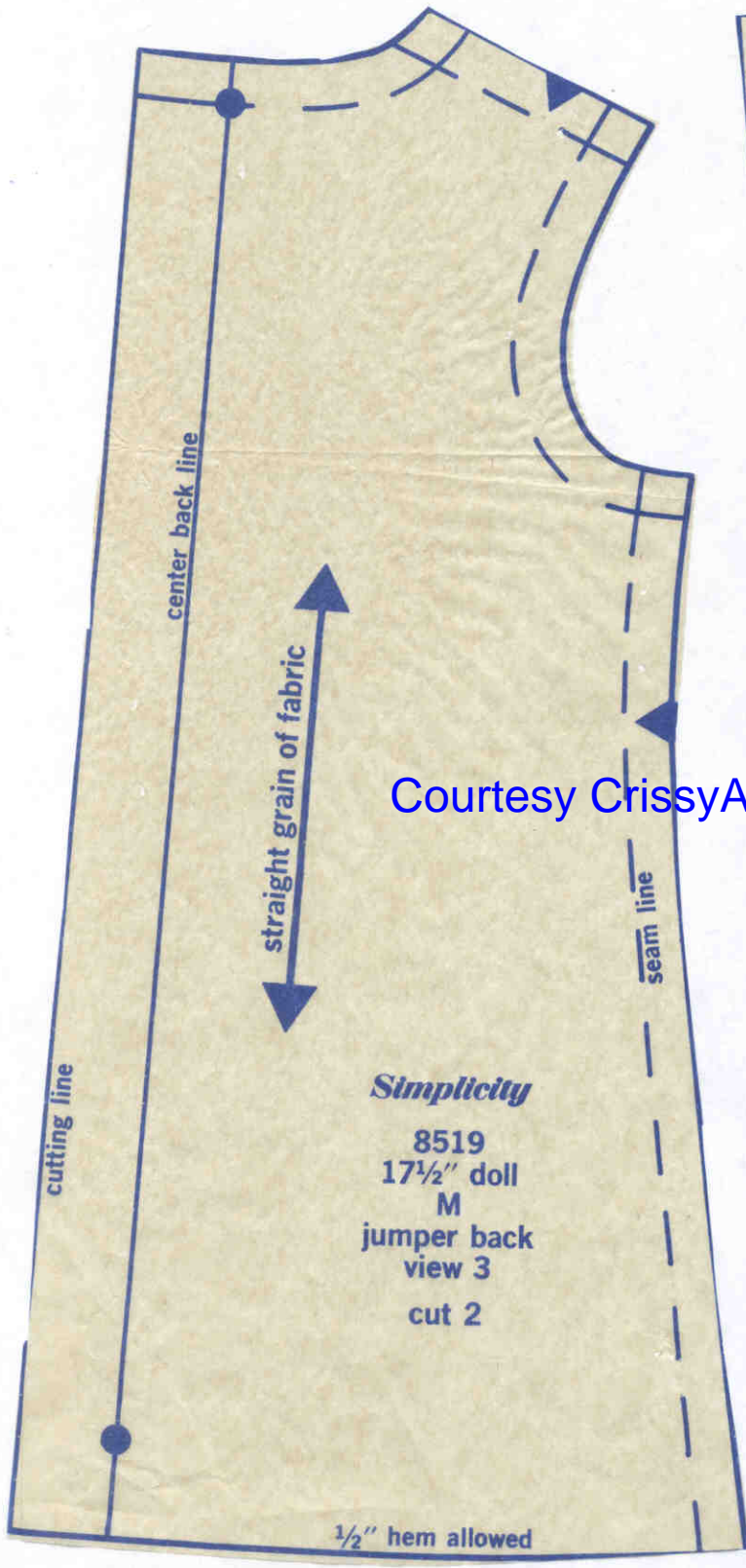




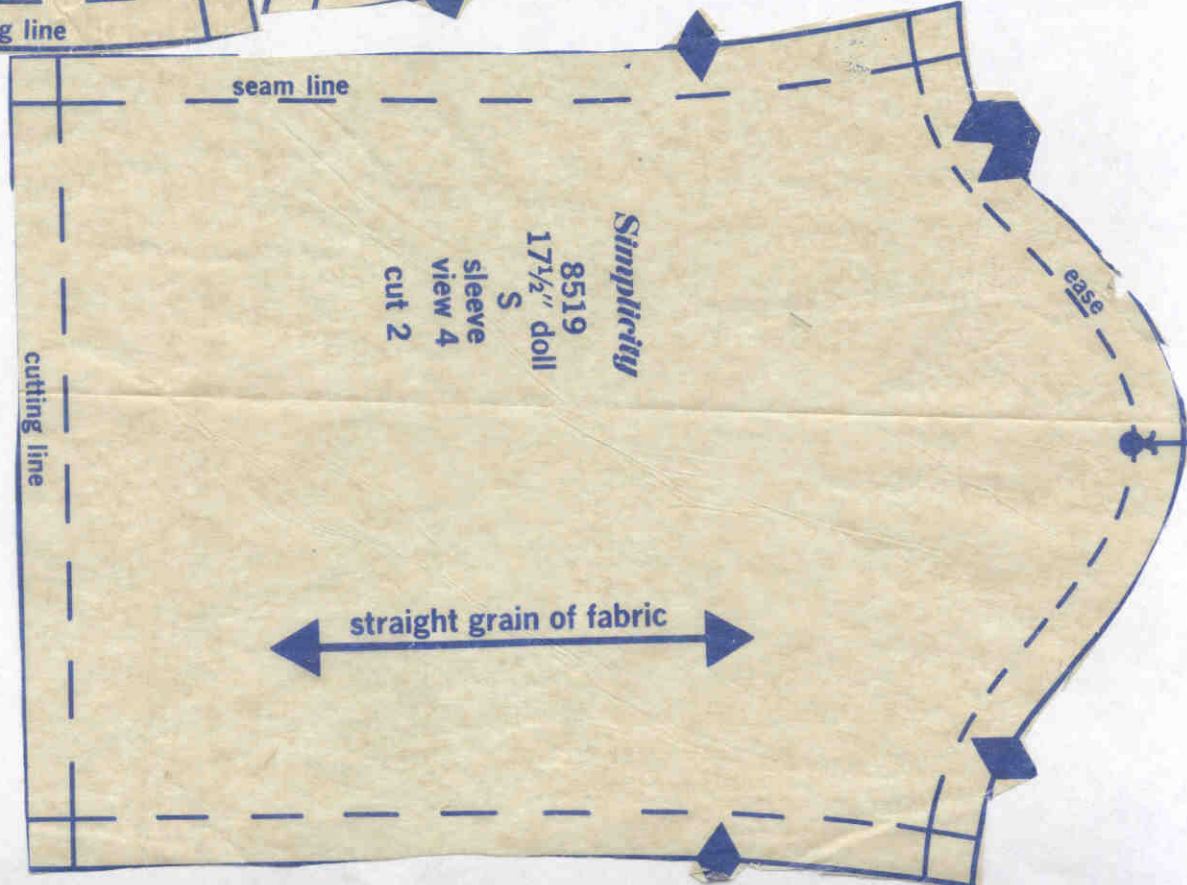
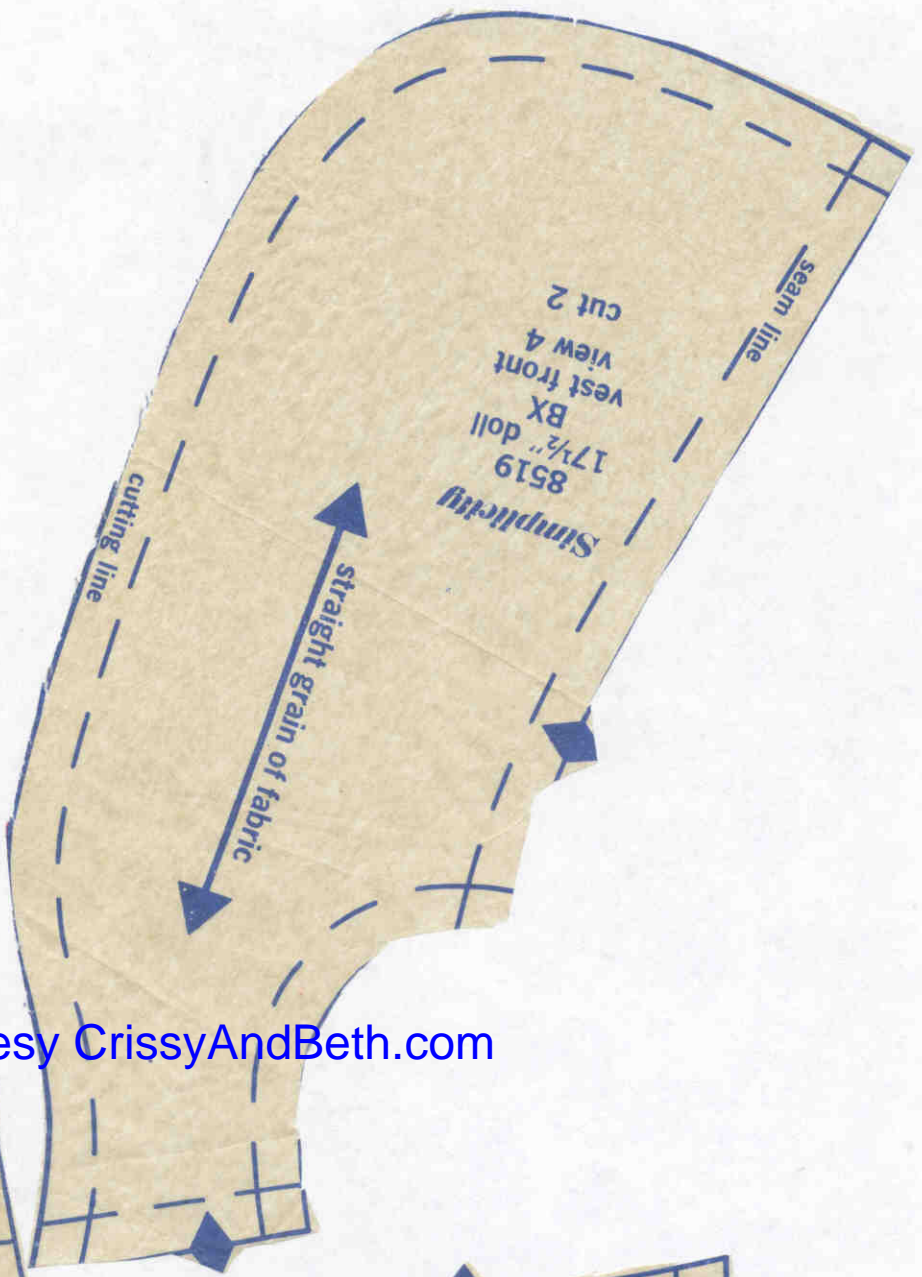
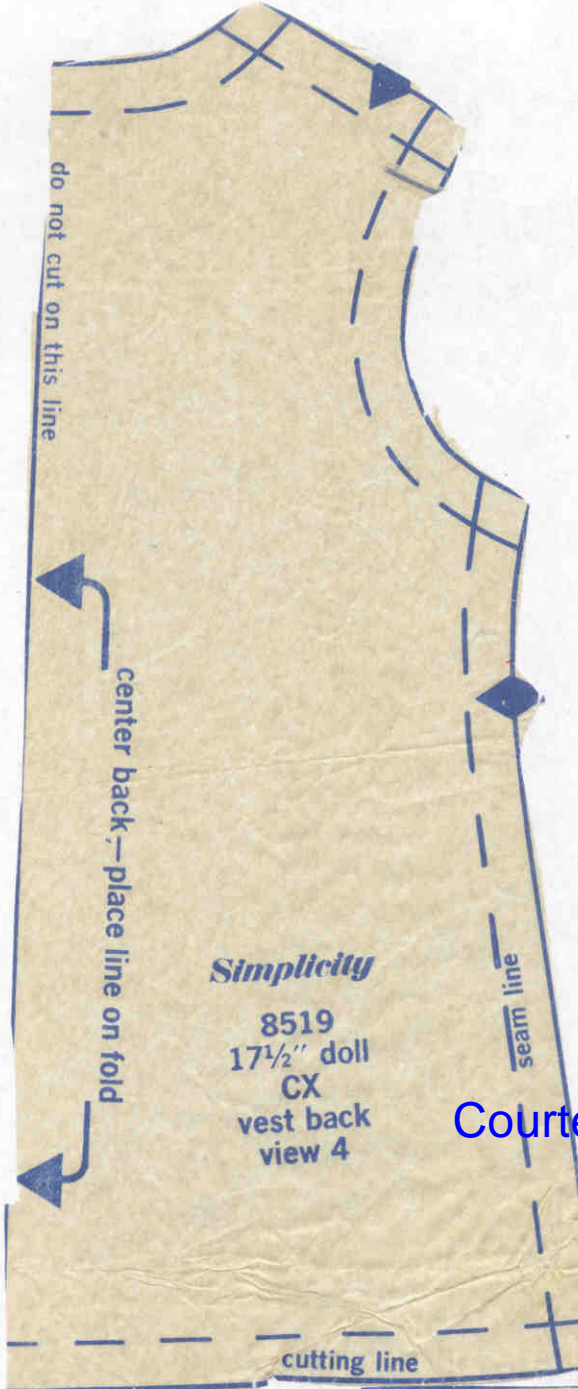
Courtesy CrissyAndBeth.com



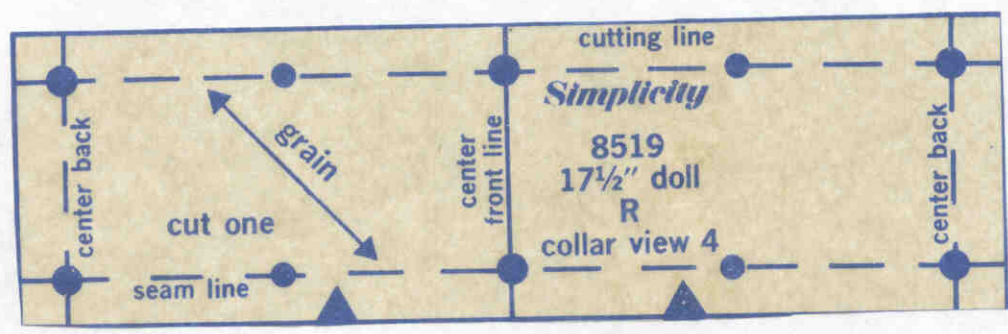
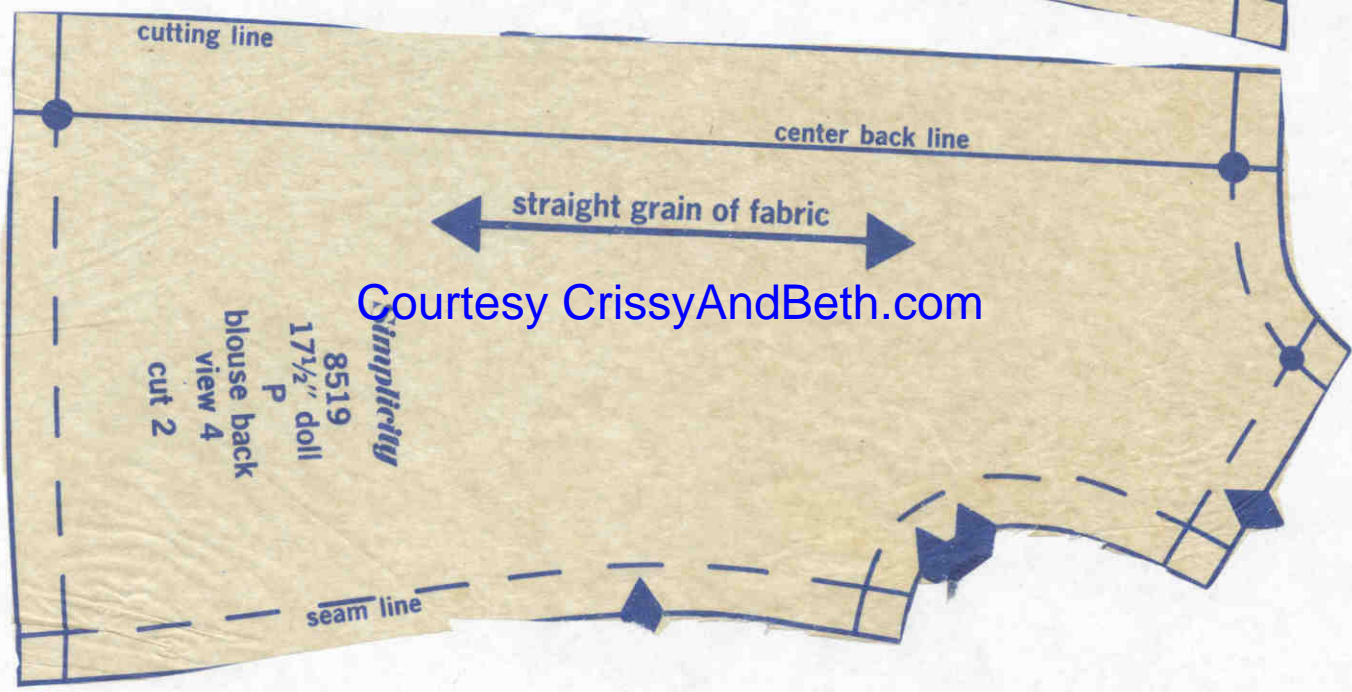
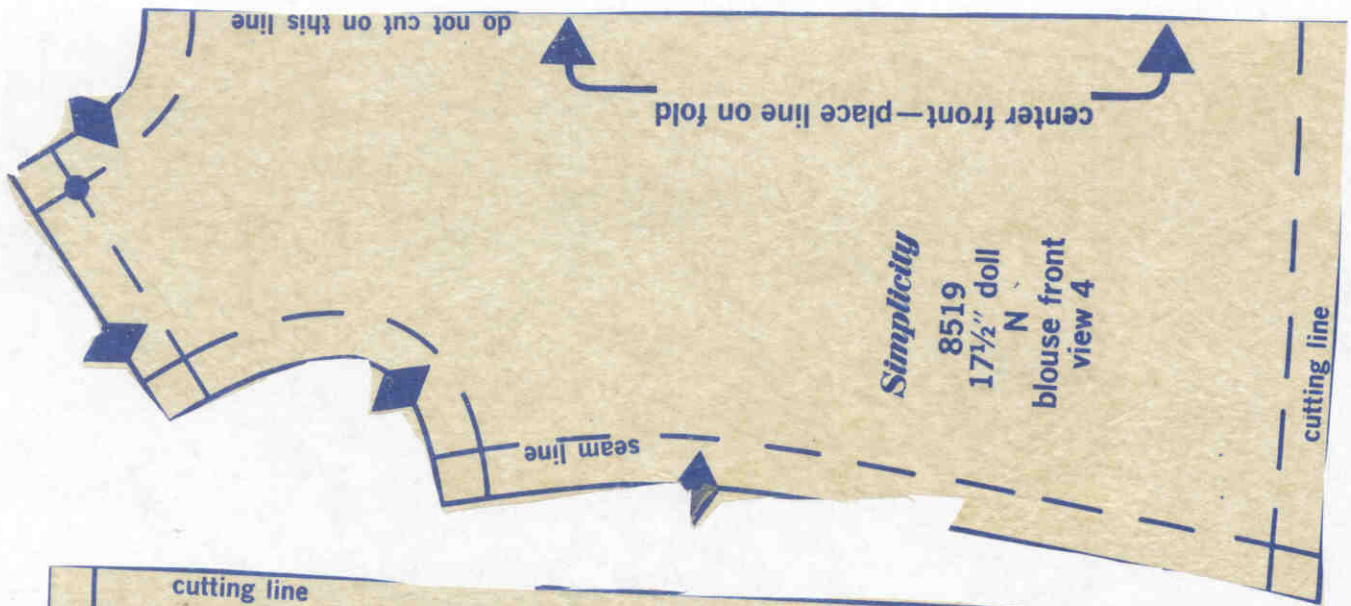
Courtesy CrissyAndBeth.com



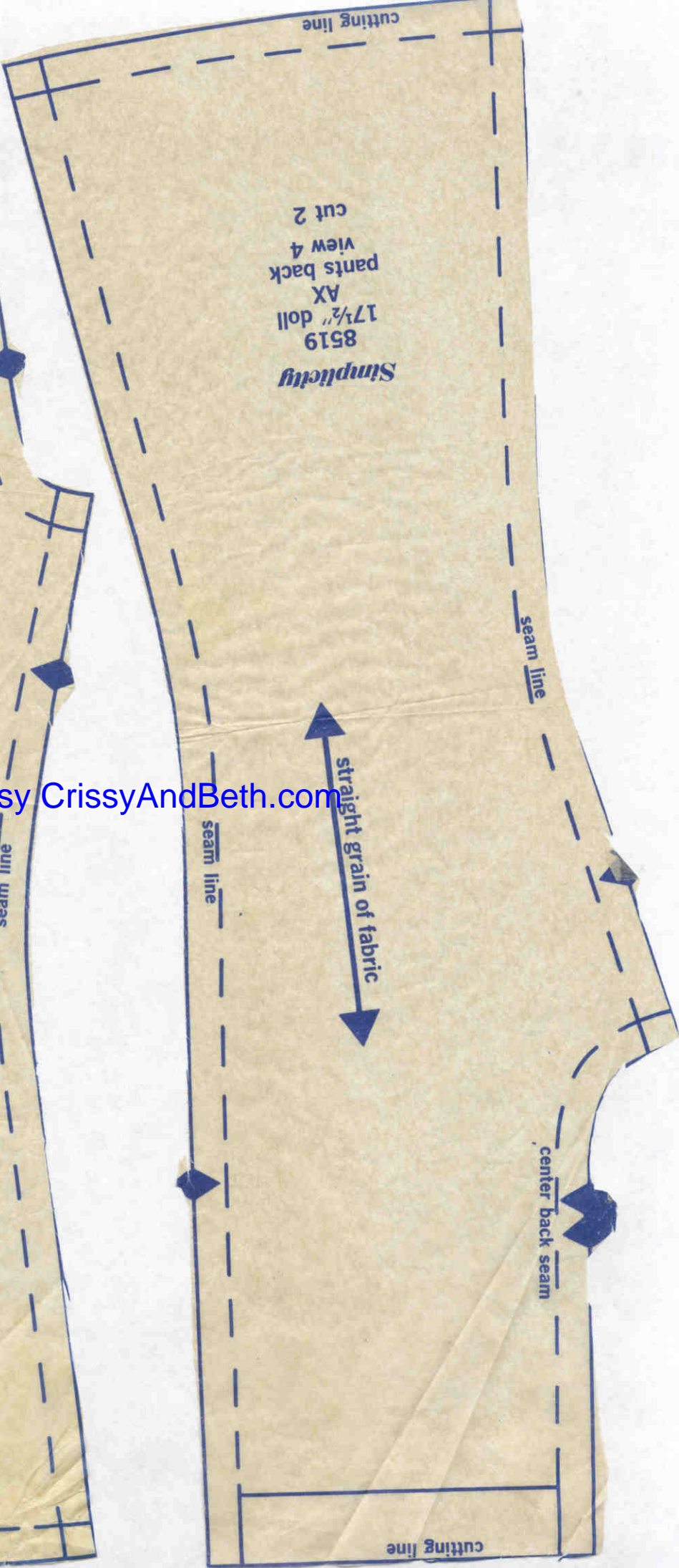
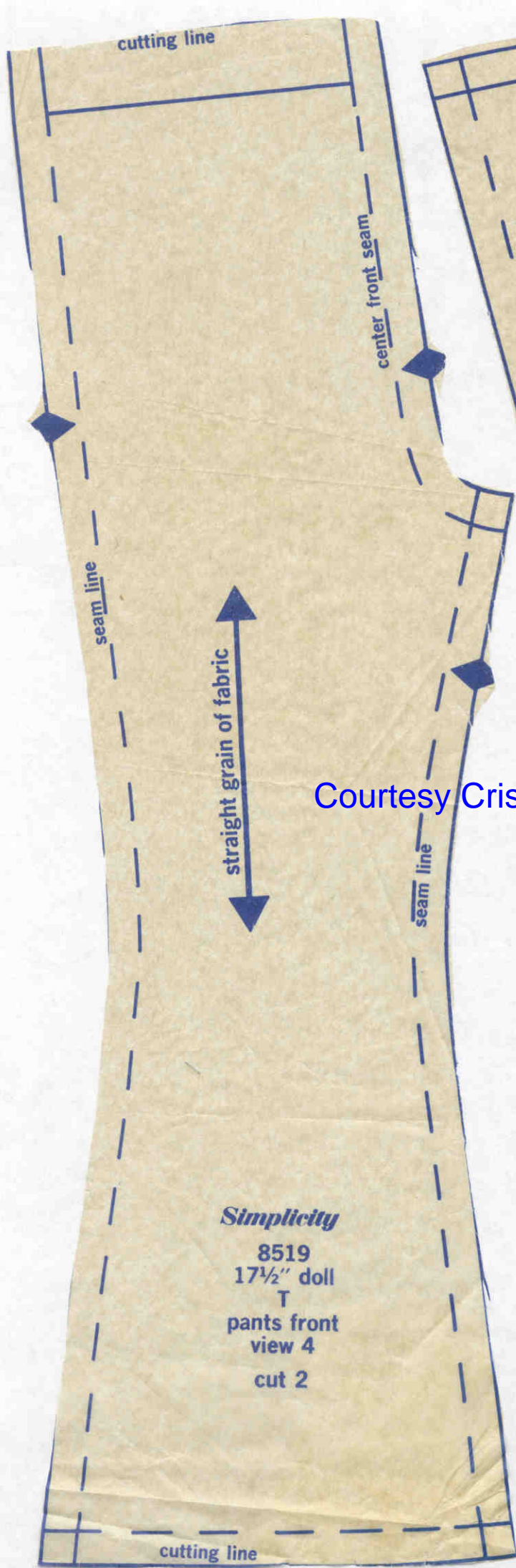
Courtesy CrissyAndBeth.com



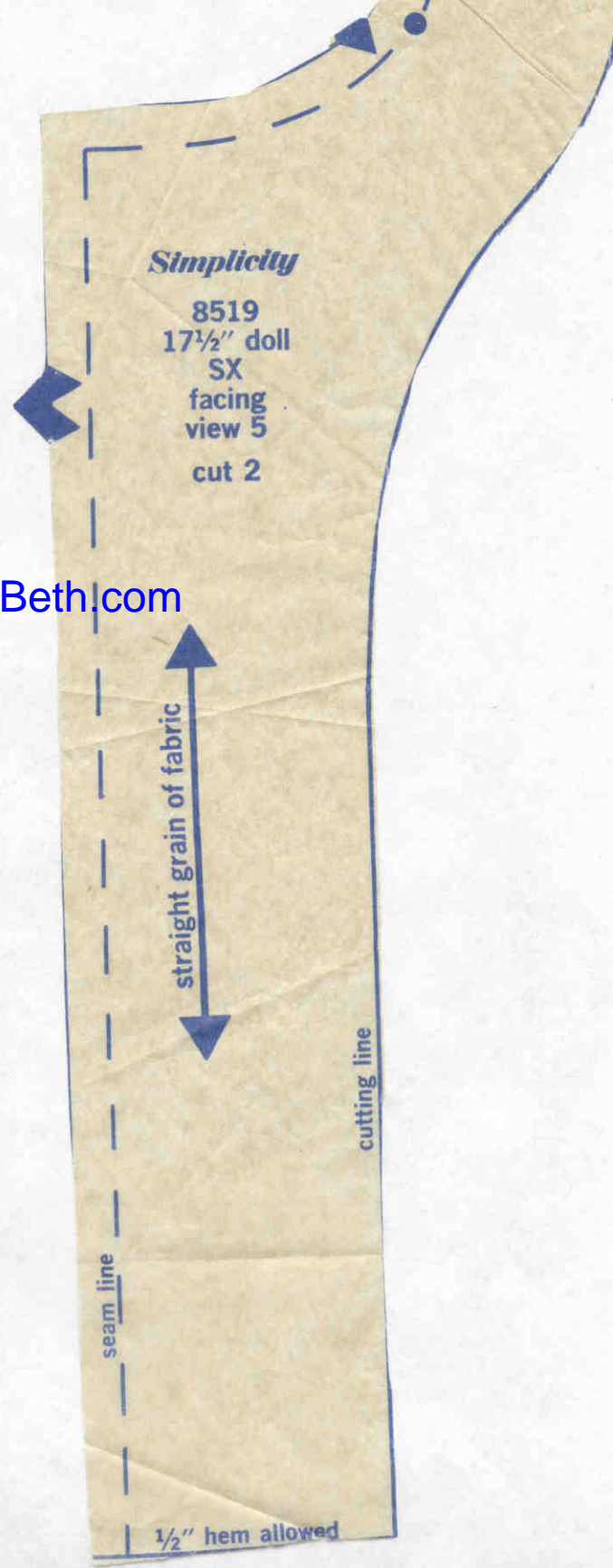
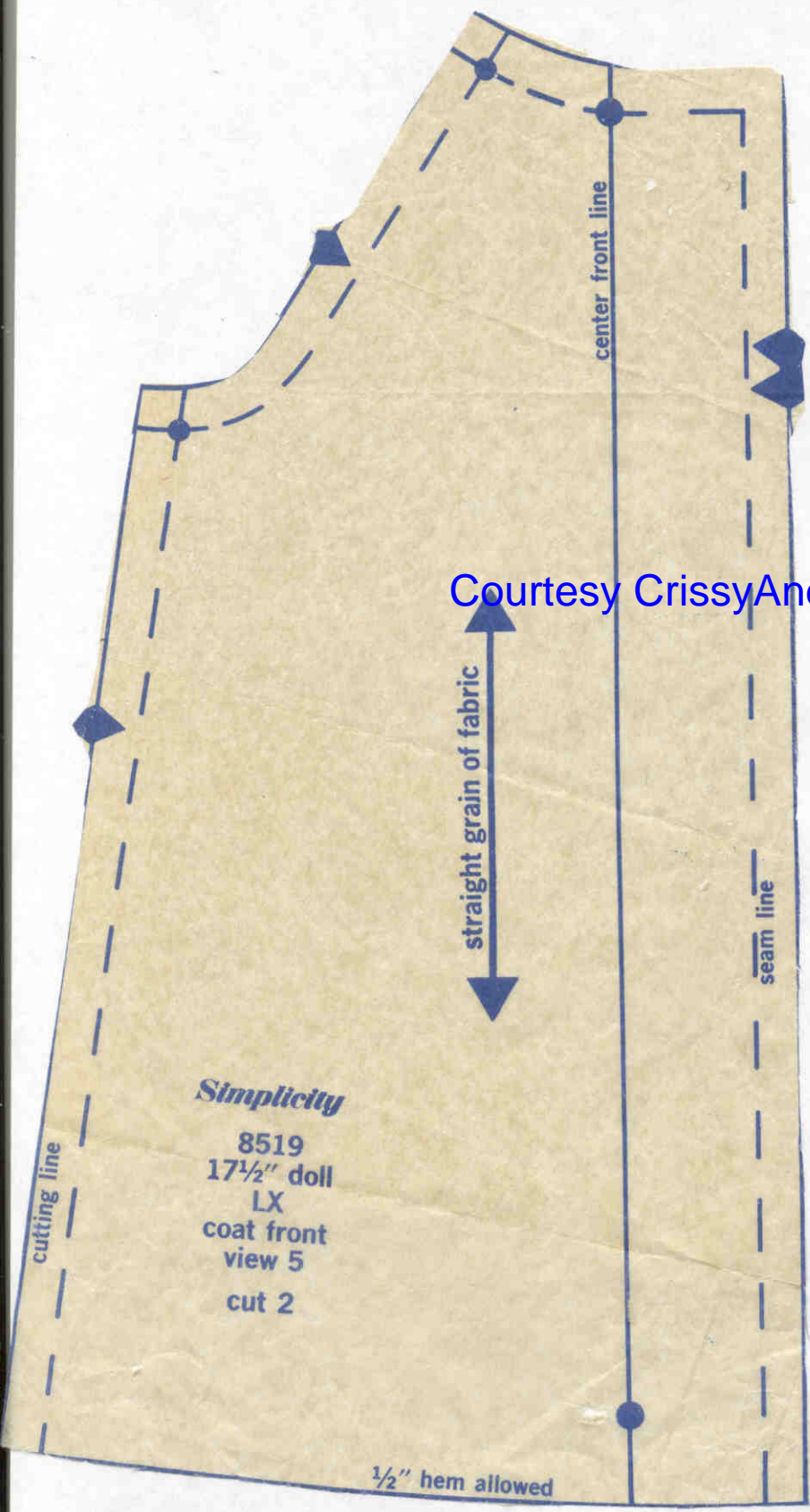
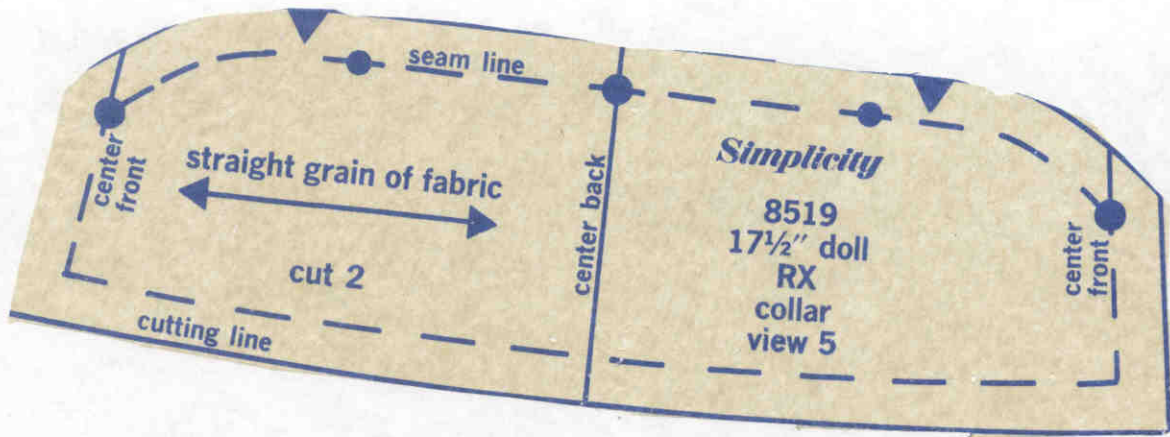
Courtesy CrissyAndBeth.com



Courtesy CrissyAndBeth.com



Courtesy CrissyAndBeth.com



Courtesy CrissyAndBeth.com

do not cut on this line

center back—place line on fold

**Simplicity**  
8519  
17½" doll  
NX  
coat back  
view 5

cutting line

½" hem allowed

seam line

Courtesy CrissyAndBeth.com

**Simplicity**  
8519  
17½" doll  
PX  
sleeve back  
view 5  
cut 2

cutting line

straight grain of fabric

seam line

cutting line

**Simplicity**  
8519  
17½" doll  
MX  
sleeve front  
view 5  
cut 2

straight grain of fabric

seam line

Courtesy CrissyAndBeth.com

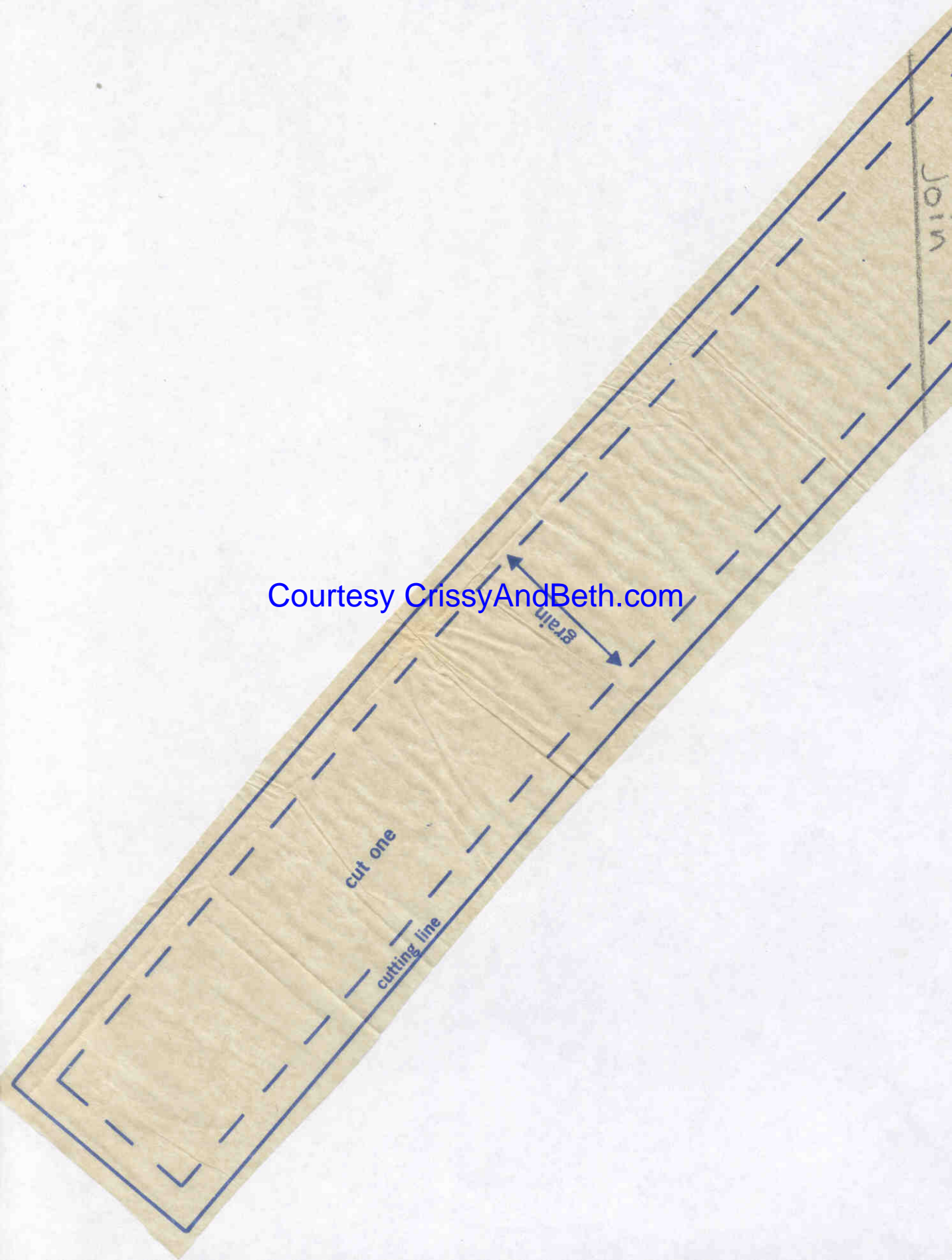
*Simplicity*  
8519  
17½" doll  
TX  
belt view 5

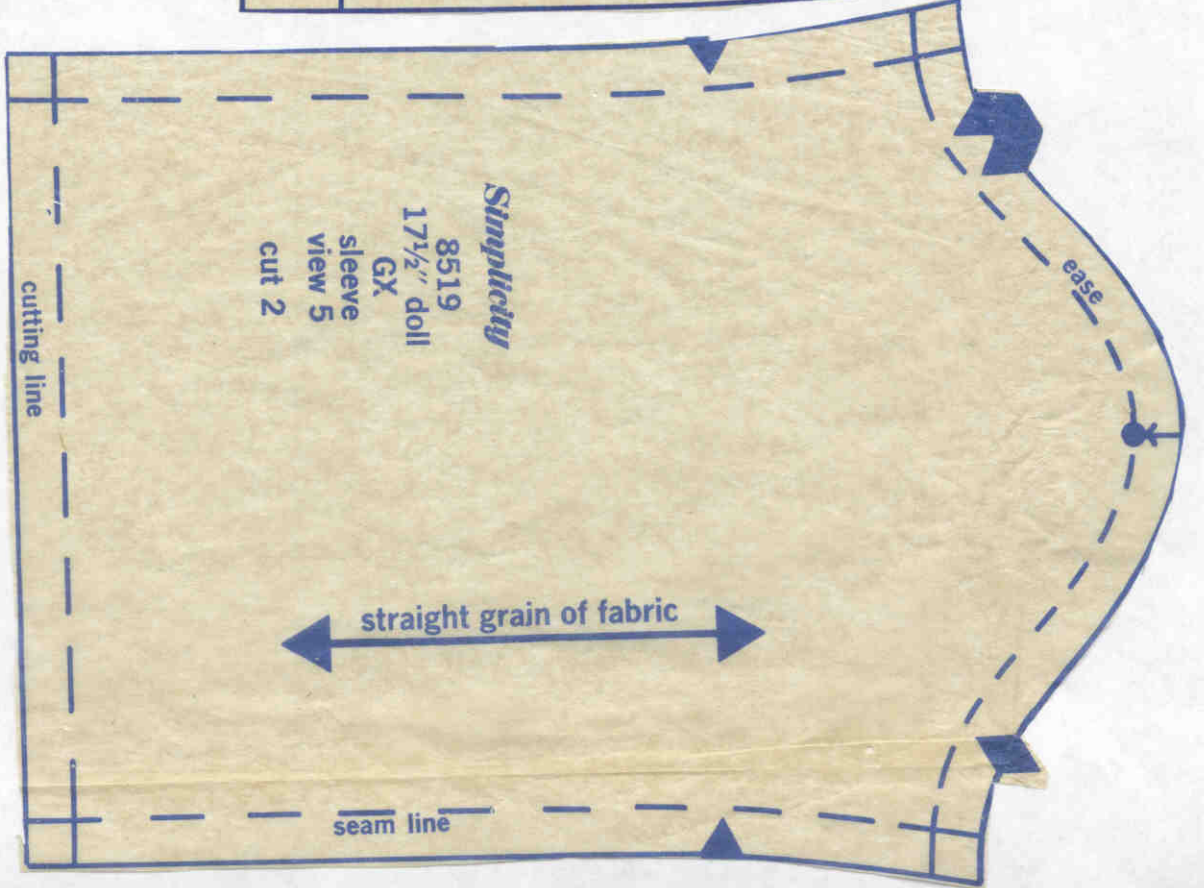
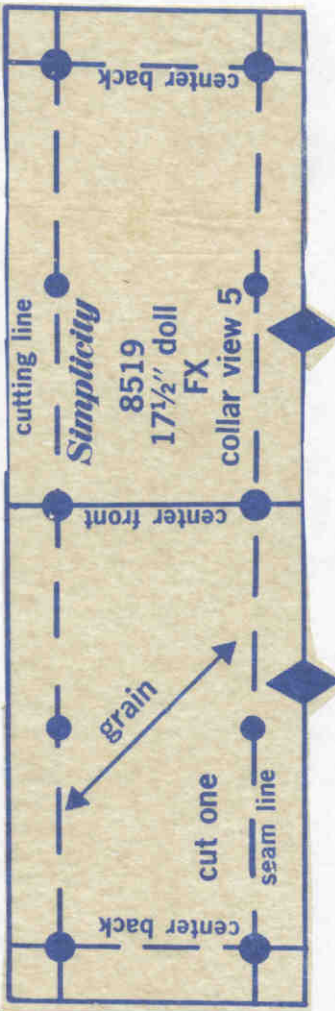
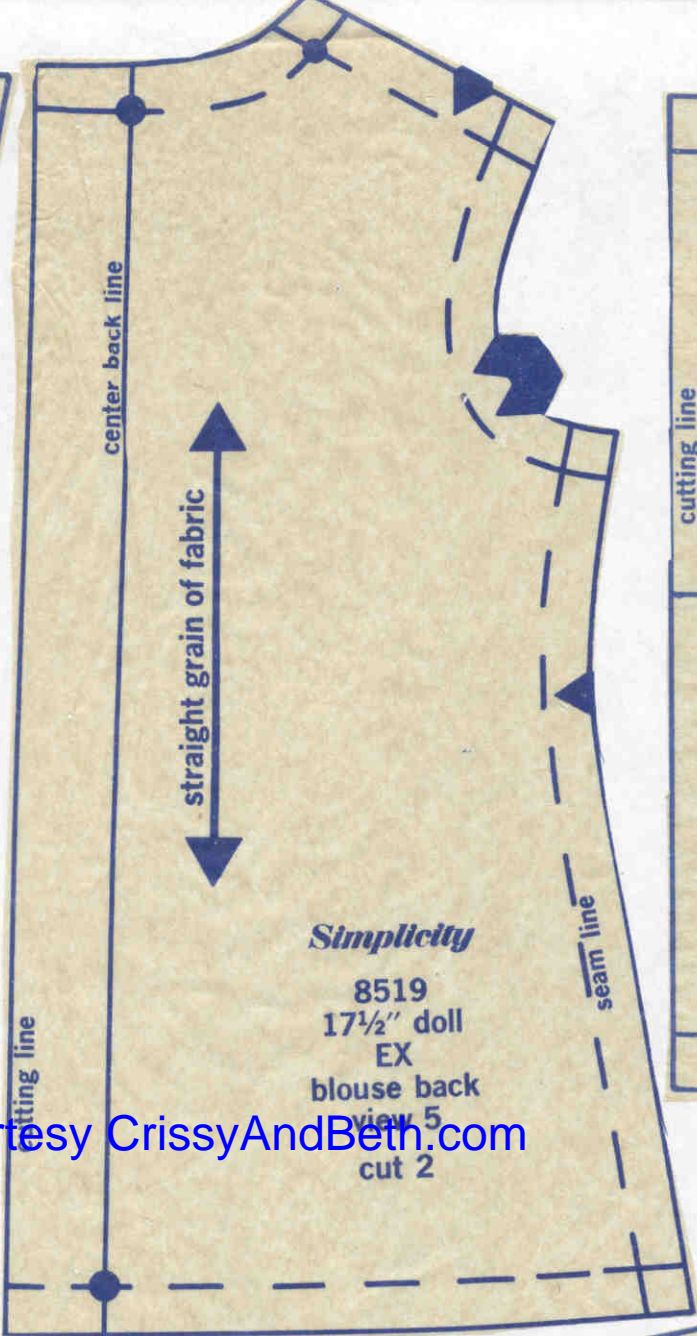
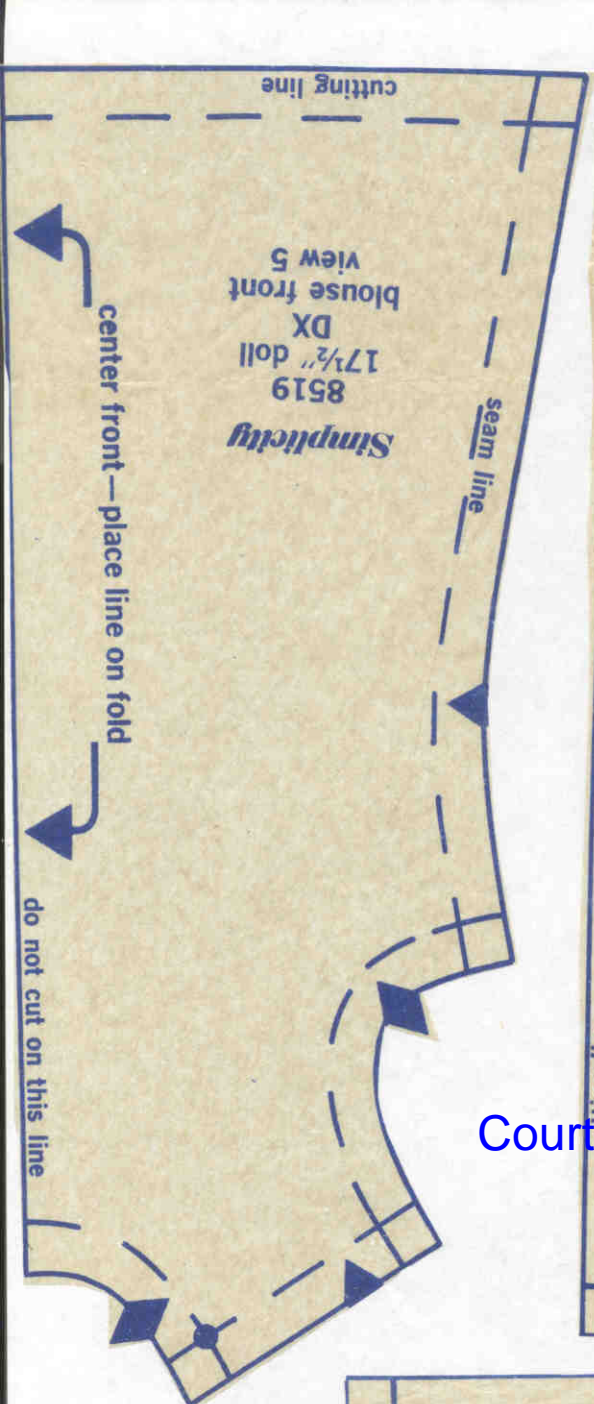
seam line

Join

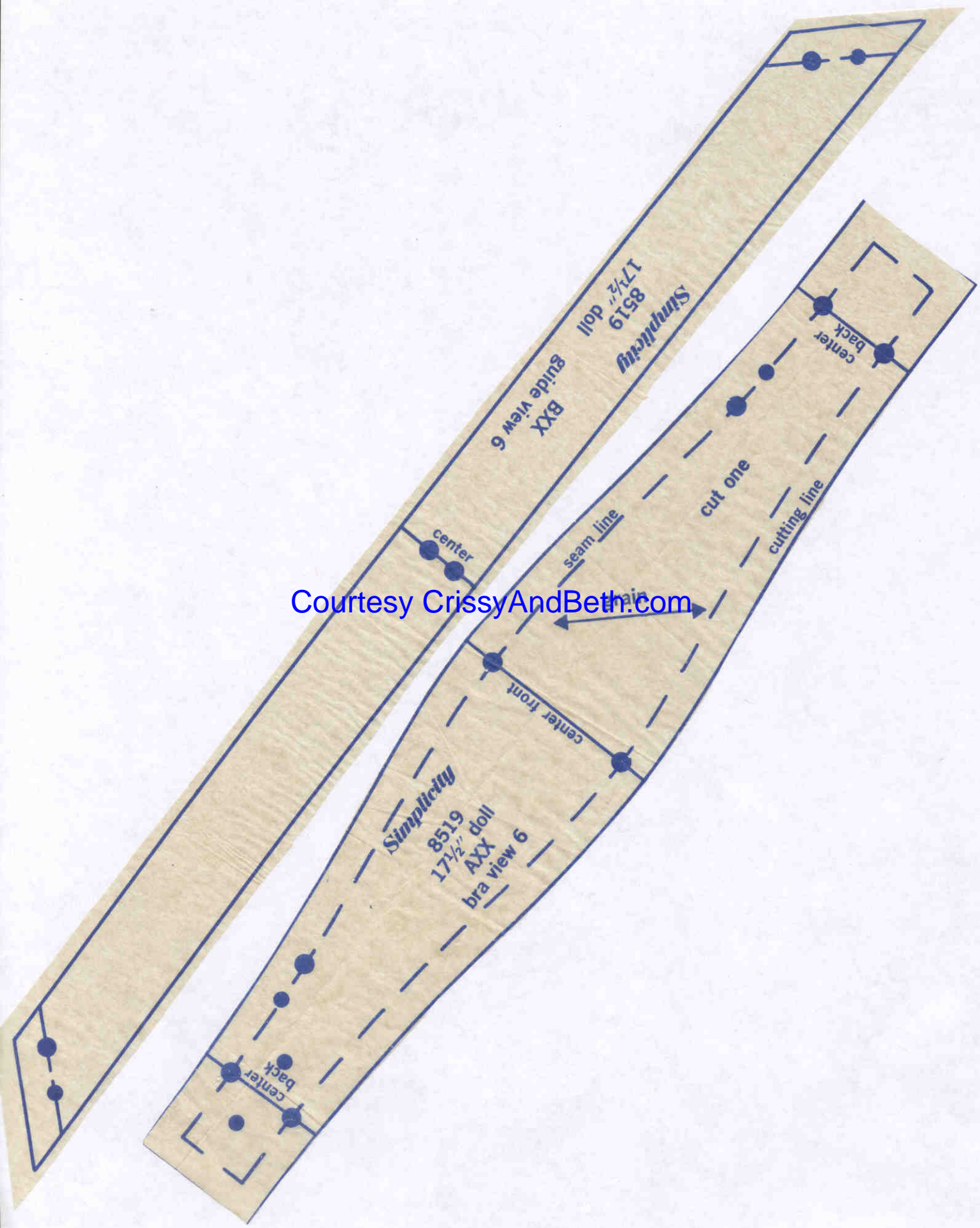
This piece is continued on next page.

Courtesy CrissyAndBeth.com

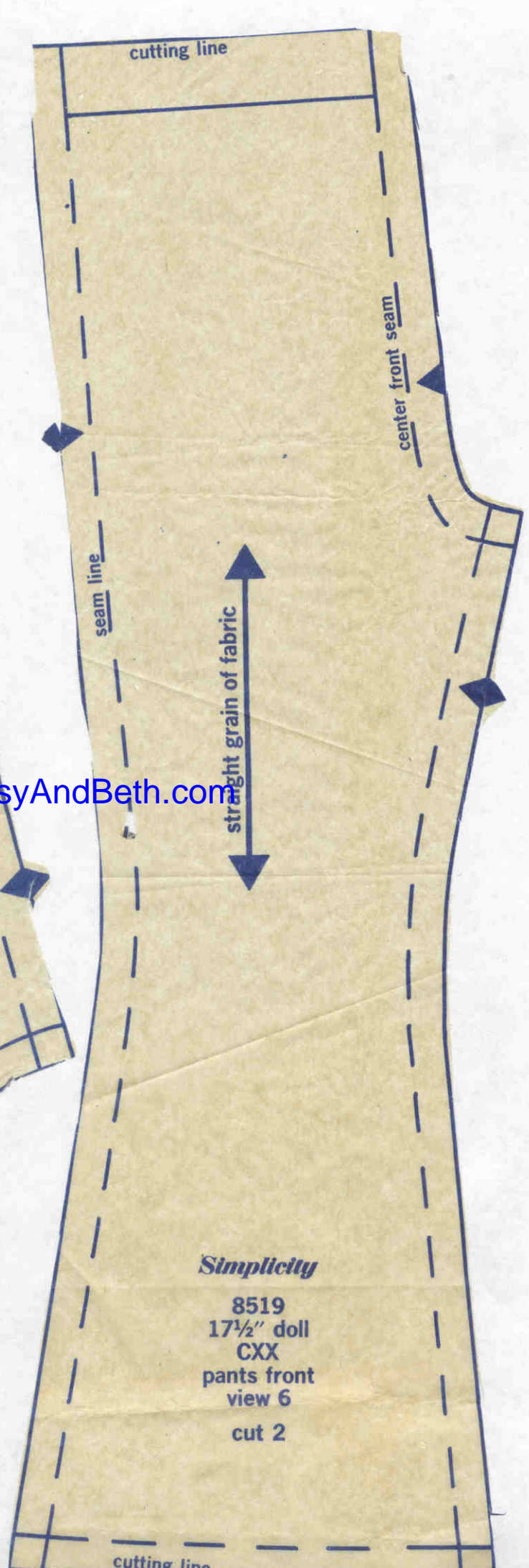
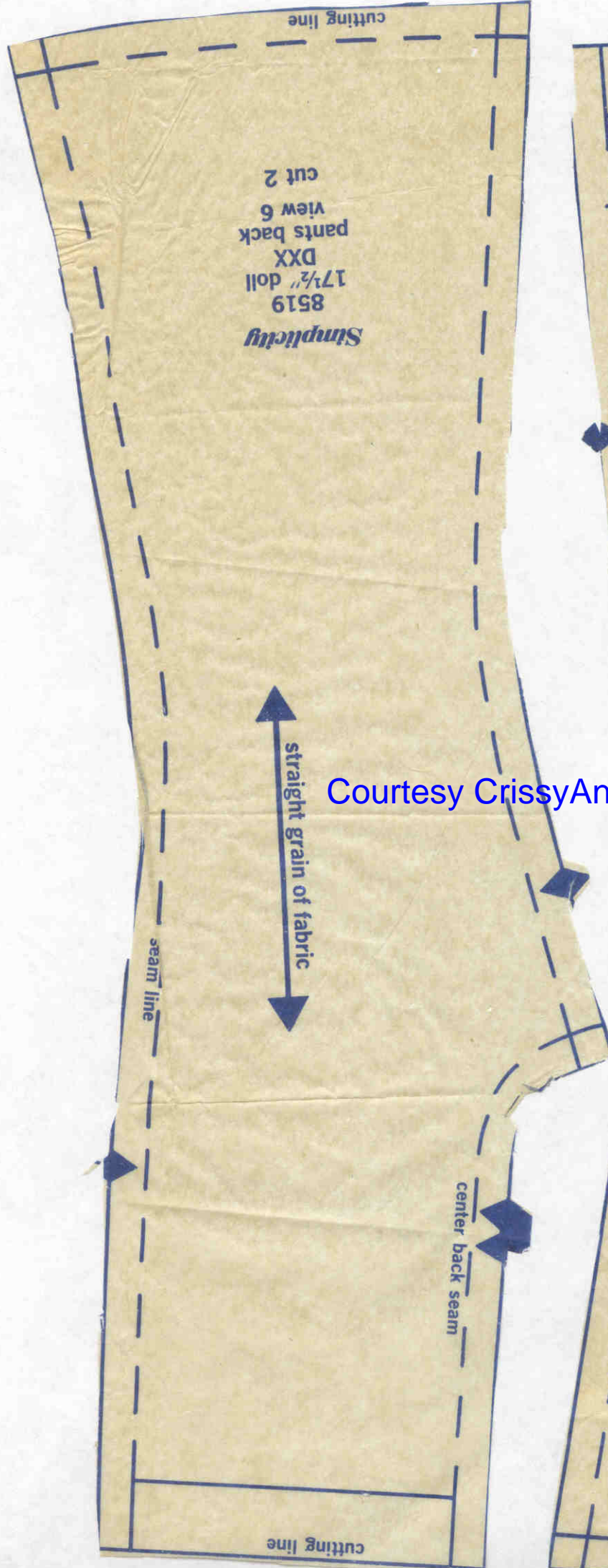




Courtesy CrissyAndBeth.com



Courtesy CrissyAndBeth.com



Courtesy CrissyAndBeth.com