

# Simplicity 9138

## cutting and sewing directions



**VIEW 1**

3 pieces  
dress  
A, B, C



**VIEW 2**

3 pieces  
dress  
D, E, F



**VIEW 3**

6 pieces  
blouse  
G, H, K  
skirt - L  
bolero  
M, N



**VIEW 6**

6 pieces  
pants  
CX  
blouse  
DX, EX, FX  
poncho  
GX, HX



**VIEW 5**

4 pieces  
tunic  
T, AX, BX  
pants  
CX



**VIEW 4**

3 pieces  
nightgown  
P, R  
panties  
S

select your  
**pattern pieces**  
according to the view  
you have chosen  
24 pieces given



dress view 1



dress view 2



blouse view 3



skirt view 3



nightgown view 4



tunic view 5



pants view 5-6



blouse view 6

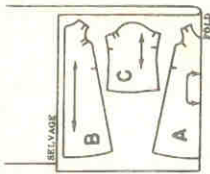


poncho view 6

Courtesy CrissyAndBeth.com

VIEW 1

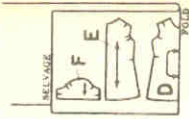
### dress



35" 36" 44"  
45" fabric  
with or  
without  
nap  
all sizes

VIEW 2

### dress



35" 36" 44"  
45" 54"  
fabric  
with or  
without nap  
all sizes

VIEW 3

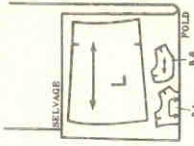
### blouse



35" 36" 44"  
45" fabric  
with or  
without nap  
all sizes

VIEW 3

### skirt and bolero

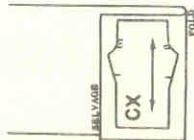


35" 36" 44"  
45" fabric  
with or  
without nap  
all sizes

VIEW 6

### pants

35" 36" 44"  
45" fabric  
with or  
without nap  
all sizes



VIEW 6

VIEW 4

### nightgown and panties



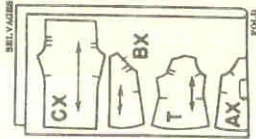
35" 36"  
fabric  
with or  
without  
nap  
all sizes

VIEW 5

### tunic and pants



35" 36" fabric  
with or  
without nap  
all sizes

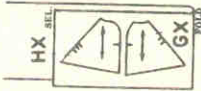


44" 45" fabric  
with or  
without nap  
all sizes

VIEW 6

### poncho

35" 36"  
fabric  
with or  
without  
nap  
all sizes



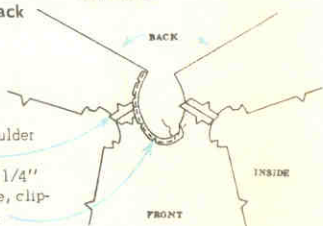
Courtesy CrissyAndBeth.com

# Sewing directions

**NOTE:** Stitch 1/4" seams, matching notches.  
Press seams open, unless otherwise instructed.  
**NOTE:** To ease or gather, stitch along seam line, using a long machine-stitch.

## VIEW 1 dress

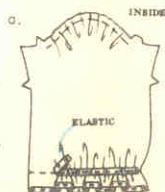
front and back



1. Stitch shoulder seams.  
Stitch under 1/4" on neck edge, clipping curves.

### sleeves

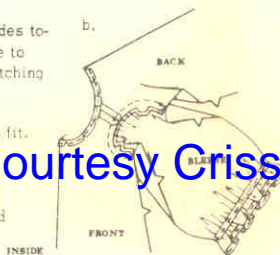
2. a—Gather top of sleeve between notches.  
Stitch under 1/4" on lower edge.  
Cut 2 pieces of elastic each 2-1/2" long.  
On INSIDE, stitch center of elastic along stitching line, stretching elastic while stitching.



b—With RIGHT sides together, pin sleeve to armhole edge, matching small dots.

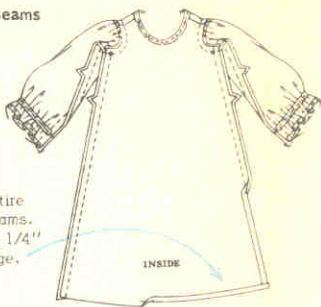
Pull up gathers to fit.  
Stitch.

Press seam toward sleeve.



### underarm seams

3. Stitch entire underarm seams.  
Press under 1/4" on lower edge.



### lace edging and rick-rack trim

4. Stitch neck edge over bound edge of lace edging.

Baste lower edge of dress over bound edge of lace.

Stitch center of rick-rack along stitching line and along lower edge of dress, catching in lace, as shown.

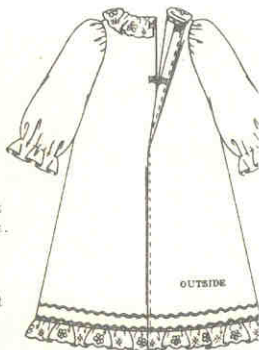


### finishing

5. Stitch RIGHT back edge to INSIDE along center line.

Lap RIGHT back over LEFT, matching centers; fasten with snaps.

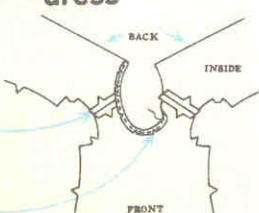
Wear ribbon sash as shown on front of envelope.



## VIEW 2

### dress

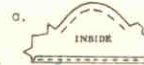
front and back



1. Stitch shoulder seams.  
Stitch under 1/4" on neck edge, clipping curves.

### sleeves

a—Ease top of sleeve between notches.  
Stitch under 1/4" on lower edge.



b—With RIGHT sides together, pin sleeve to armhole edge, matching small dots.

Pull up stitching to fit.

Stitch. Press seam toward sleeve.



### underarm seams

3. Stitch entire underarm seams.  
Stitch under 1/4" on lower edge.



### finishing

4. Stitch RIGHT back edge to INSIDE along center line.

Lap RIGHT back over LEFT, matching centers; fasten with snaps.



### buttons

5. Sew buttons to front along center, spacing them evenly.

DIRECTIONS CONTINUED ON OTHER SIDE

Courtesy CrissyAndBeth.com



## blouse, skirt and bolero

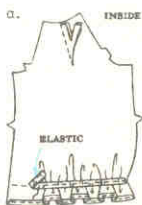
### blouse

#### sleeves

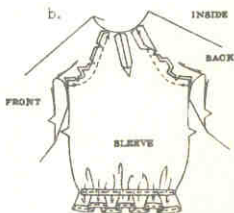
1. a—Make dart; trim and press open.

Stitch under 1/4" on lower edge. Cut 2 pieces of elastic, each 2-1/2" long.

On **INSIDE**, stitch center of elastic along stitching line, stretching elastic, while stitching.

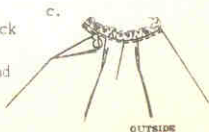


b—With **RIGHT** sides together, pin sleeve to armhole edge of front and back, matching small dots ●.



Stitch. Clip curves.

c—Press under 1/4" on neck edge, clipping curves. Stitch neck edge over bound edge of lace edging.



#### underarm seams

3—Stitch entire underarm seam. Clip curves. Stitch under 1/4" on lower edge.



#### finishing

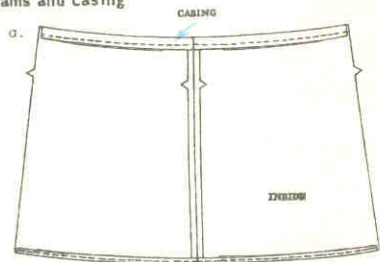
4. Stitch **RIGHT** back edge to **INSIDE** along center line

Lap **RIGHT** back over **LEFT**, matching centers; fasten with snaps.

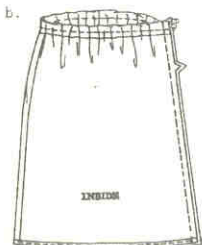


### skirt

#### seams and casing



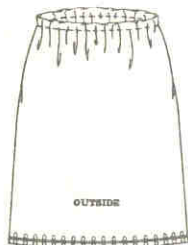
1. a—Stitch one side seam. Stitch under 1/4" on lower edge. Press upper edge to **INSIDE** along fold line, forming casing. Stitch 3/8" from fold.



b—Cut a piece of elastic 6" long. Insert elastic thru casing; sew ends to skirt. Stitch remaining side seam.

#### metallic novelty braid trim

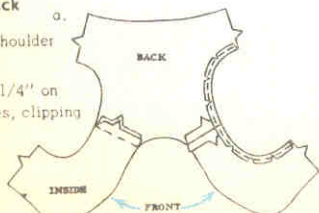
2—Hand-sew trim along lower edge of skirt, turning under ends at one side seam.



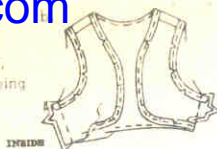
### bolero

#### front and back

1. a—Stitch shoulder seams. Stitch under 1/4" on armhole edges, clipping curves.

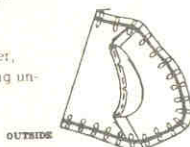


b—Stitch side seams. Stitch under 1/4" on lower, front and neck edges, clipping curves.



#### metallic novelty braid trim

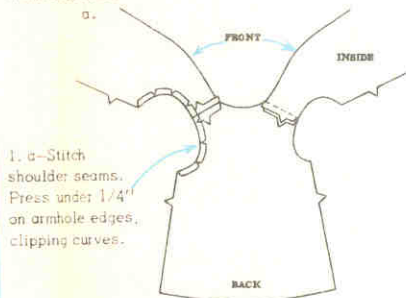
2. Hand-sew trim along lower, front and neck edges, turning under ends at one side seam.



## nightgown and panties

### nightgown

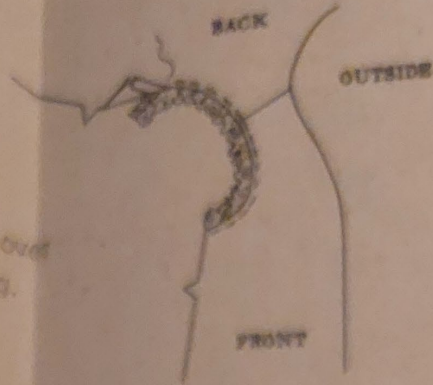
#### front and back



1. a—Stitch shoulder seams. Press under 1/4" on armhole edges, clipping curves.

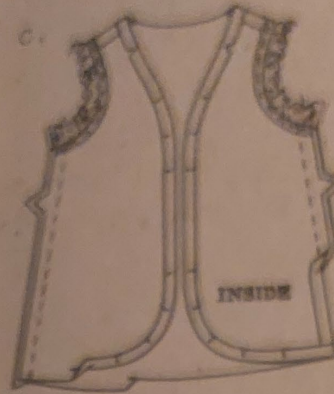
BACK

b.



b—Stitch armhole edges over bound end of lace edging.

c.

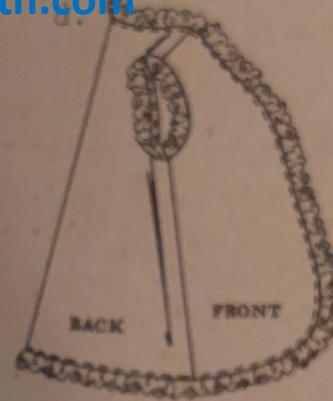


c—Stitch side seams. Press under 1/4" on lower front and neck edges, clipping curves.

Courtesy CrissyAndBeth.com

d—Stitch lower, front and neck edges over bound edge of lace edging, turning and lapping one end at one side seam.

OUTSIDE



### ribbon ties

2—Cut ribbon into 4 equal pieces.

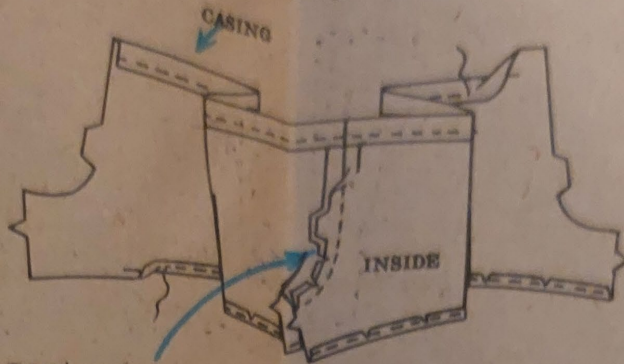
On INSIDE, sew one end of each piece to front edges at small dots •, turning under end.

Tie into bows.



## Panties

### center front seam and casing

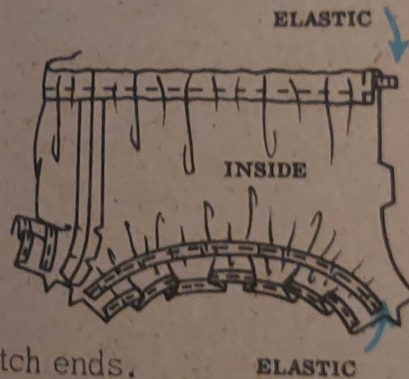


- 1—Stitch center front seam. Clip curves.  
Stitch under 1/4" on leg edges, clipping curves.  
Press upper edge to INSIDE along fold line, forming casing.  
Stitch 3/8" from fold.

Courtesy CrissyAndBeth.com

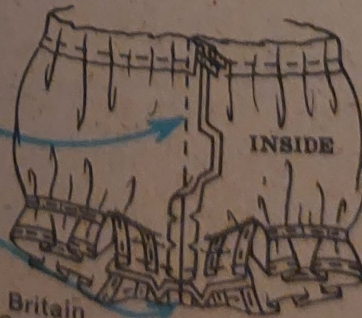
### elastic

- 2—Cut 2 pieces of elastic, each 4" long.  
On INSIDE, stitch center of elastic along stitching lines, stretching elastic while stitching. Cut a piece of elastic 6" long.  
Insert elastic thru casing. Stitch ends.



### center back and inner leg seams

3. Stitch center back seam.  
Clip curves.  
Stitch inner leg seam.



# tunic and pants

## tunic

### sleeves

1. a—Make dart; trim and press open.

Stitch under 1/4" on lower edge.

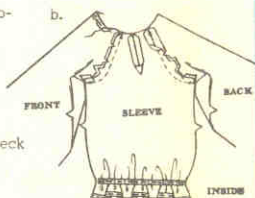
Cut 2 pieces of elastic, each 2-1/2" long.

On **INSIDE**, stitch center of elastic along stitching line, stretching elastic while stitching.



b—With **RIGHT** sides together, pin sleeve to armhole edges of front and back, matching small dots ●. Stitch. Clip curves.

Stitch under 1/4" on neck edge, clipping curves.

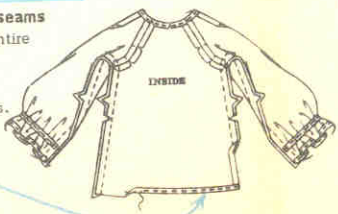


### underarm seams

3. Stitch entire underarm seams.

Clip curves.

Stitch under 1/4" on lower edge.



### finishing

4. Stitch **RIGHT** back edge to **INSIDE** along center line. Lap **RIGHT** back over **LEFT**, matching centers; fasten with snaps.



### metallic novelty braid trim

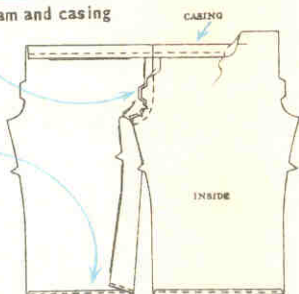
5. Hand-sew trim along neck and lower edges, turning under end at **RIGHT** back edge.



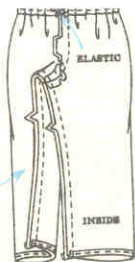
## pants

### center front seam and casing

1. Stitch center front seam. Clip curves. Stitch under 1/4" on leg edges. Press upper edge to **INSIDE** along fold line, forming casing. Stitch 3/8" from fold.



2. Cut a piece of elastic 6" long. Insert elastic thru casing; sew ends to pants. Stitch center back seam. Clip curves. Stitch inner leg seam.



## VIEW 6

# blouse, pants and poncho

## blouse

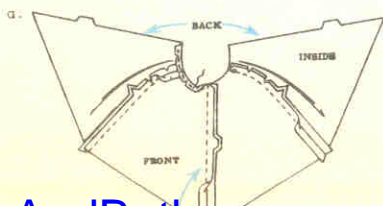
Make blouse same as dress view 2, see steps 1 thru 4.

## pants

Make pants same as for view 5, see steps 1 and 2.

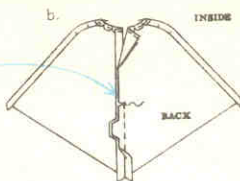
## poncho

### front and back



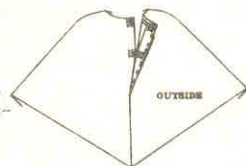
1. a—Stitch center front seam. Stitch front to back at shoulder seams, matching small dots ●. Clip curves. Stitch under 1/4" on neck edge, clipping curves.

b—Stitch center back seam to small dot ●. Clip **LEFT** back edge to small dot ●; press seam open below clip.



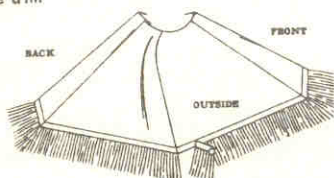
### finishing

2. Stitch **RIGHT** back opening edge to **INSIDE** along seam line. Lap **RIGHT** back opening edge over **LEFT**, matching centers; fasten with snaps.



### fringe trim

3. Stitch straight edge of fringe over lower edge of poncho, folding out fullness at corners, turning under ends at one shoulder seam.



Courtesy CrissyAndBeth.com

**Simplicity**  
9138  
15½" doll  
A  
dress front view 1

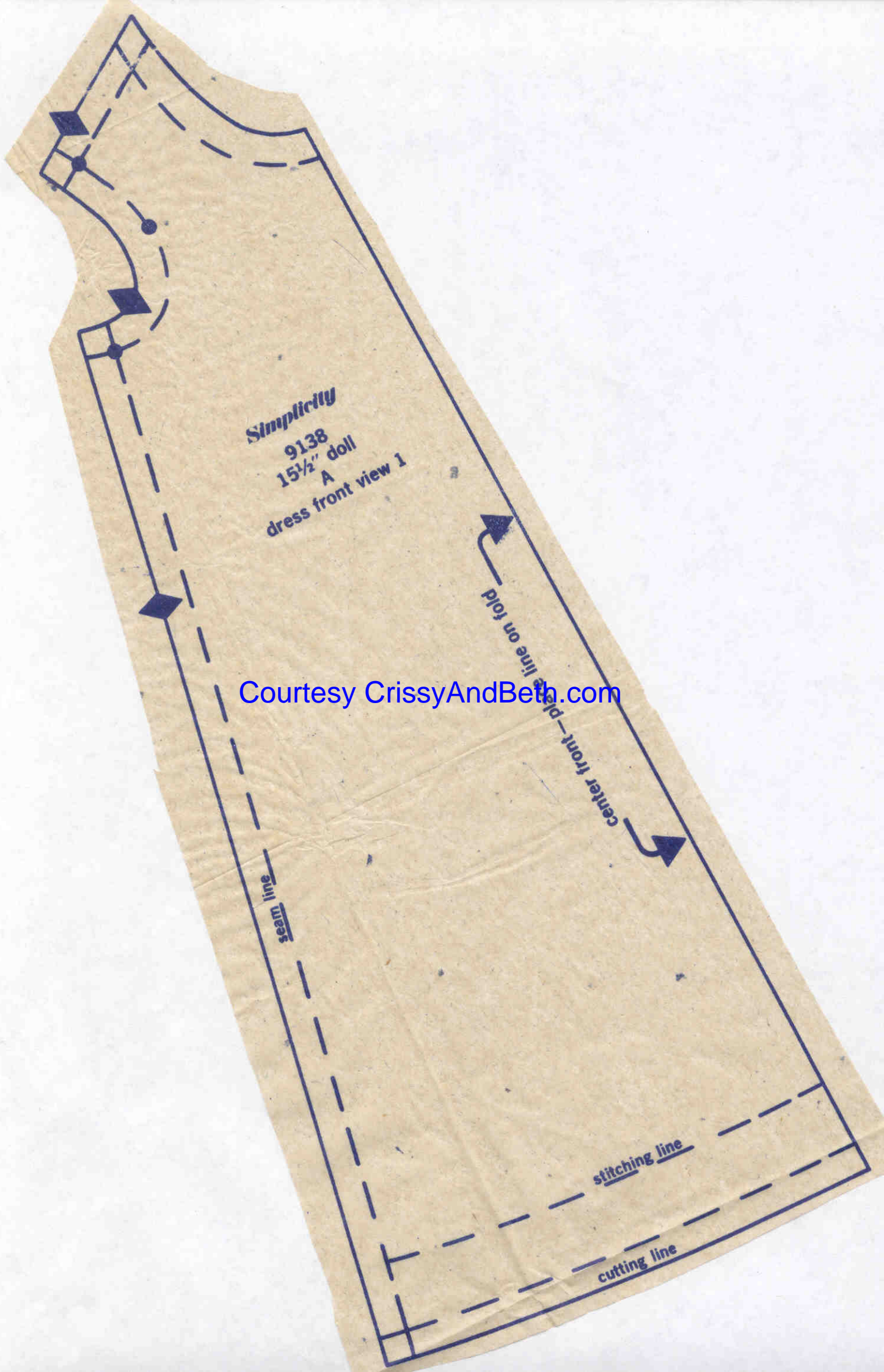
Courtesy CrissyAndBeth.com

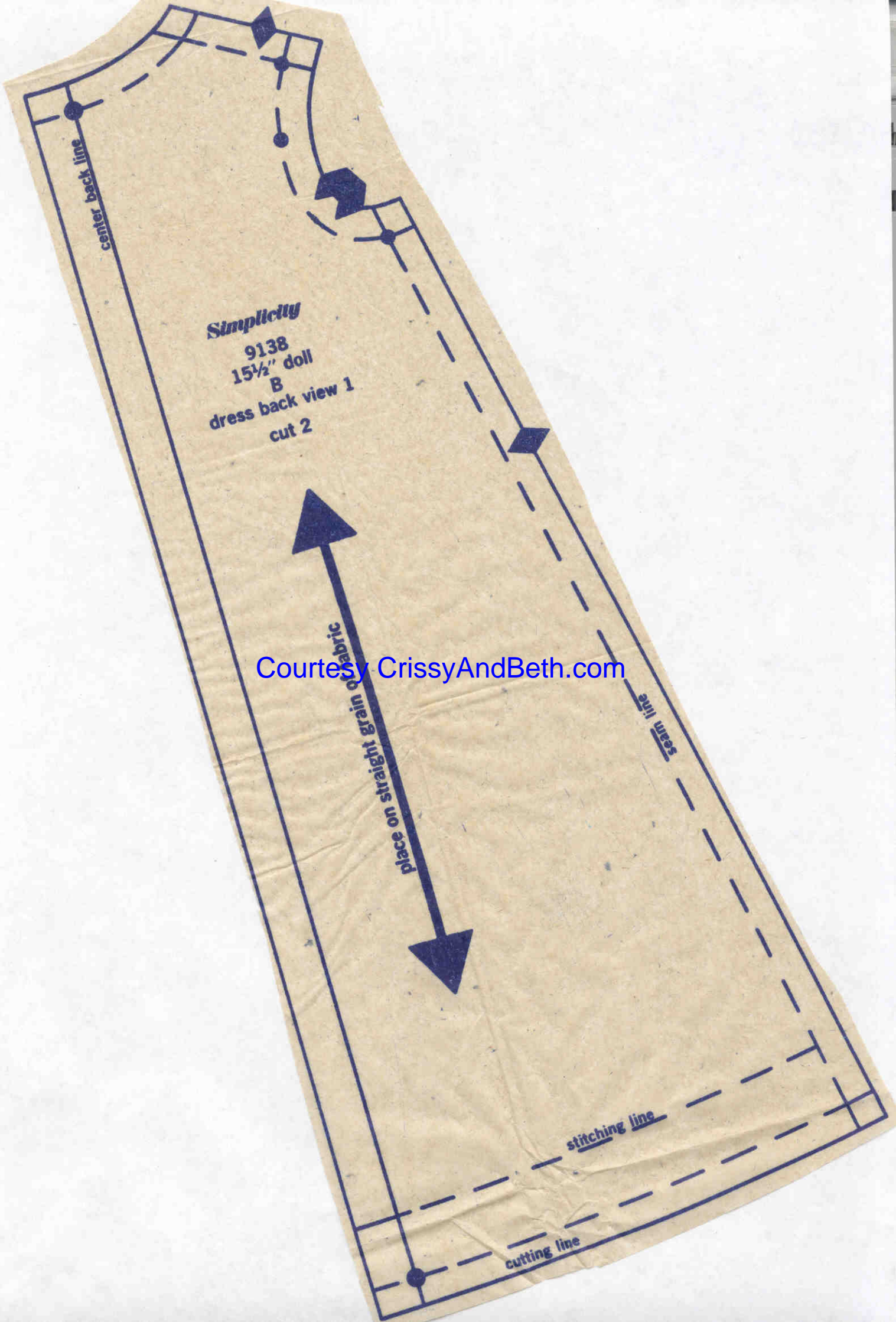
seam line

center front - place line on fold

stitching line

cutting line





center back line

**Simplicity**  
**9138**  
**15½" doll**  
**B**  
**dress back view 1**  
**cut 2**

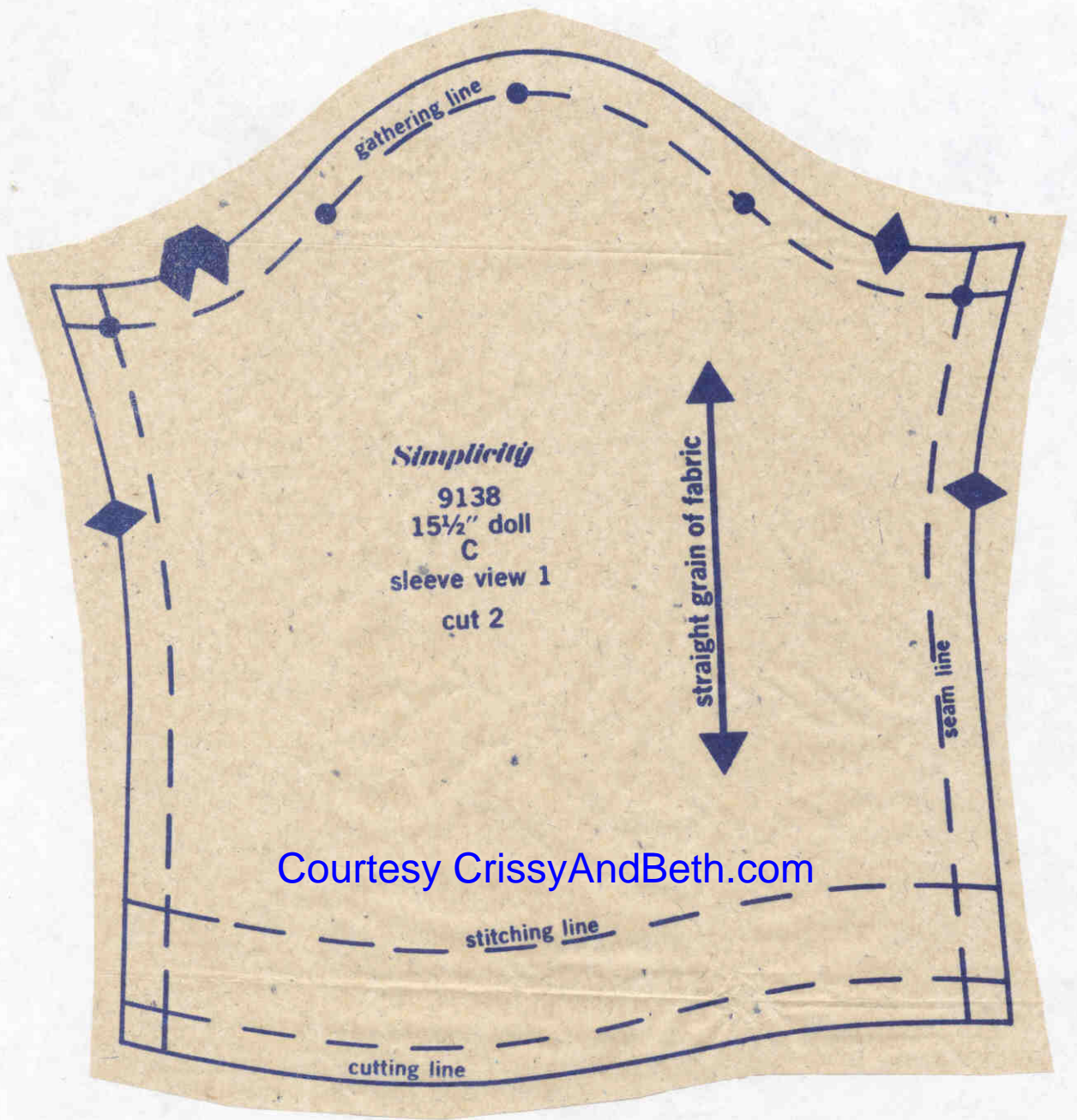
place on straight grain of fabric

seam line

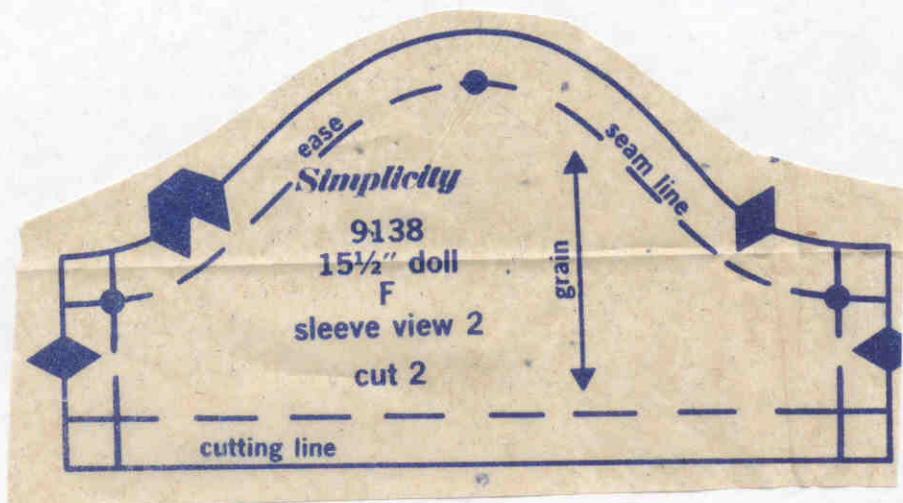
stitching line

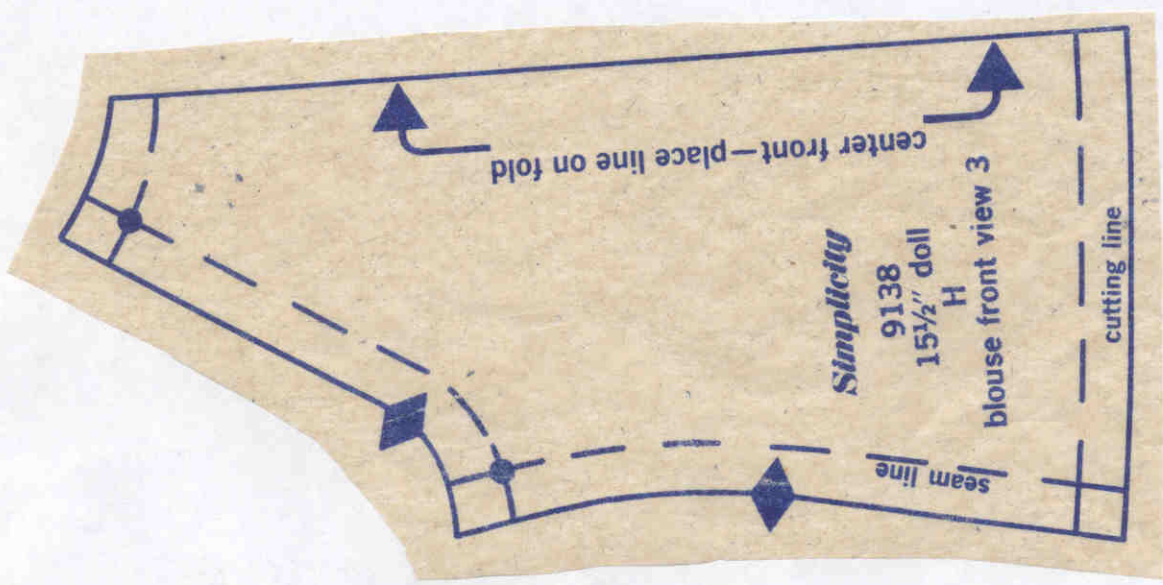
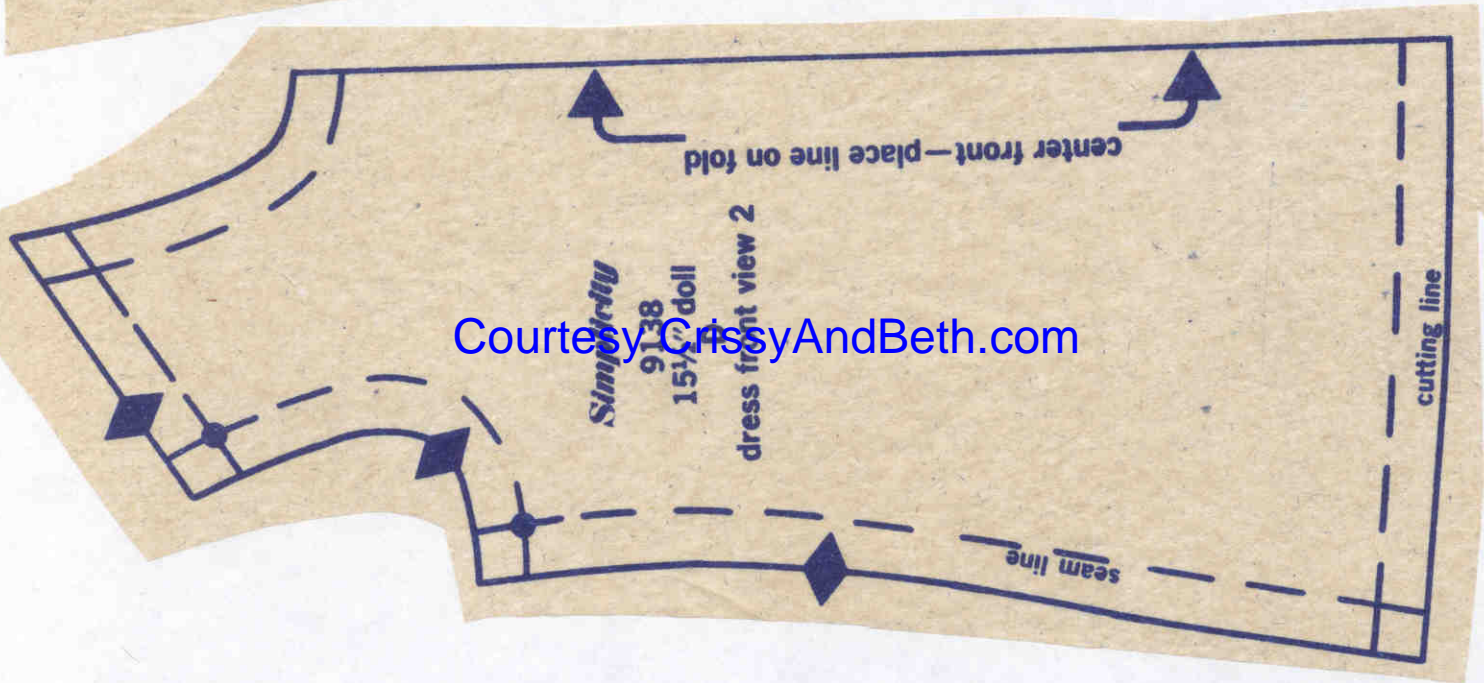
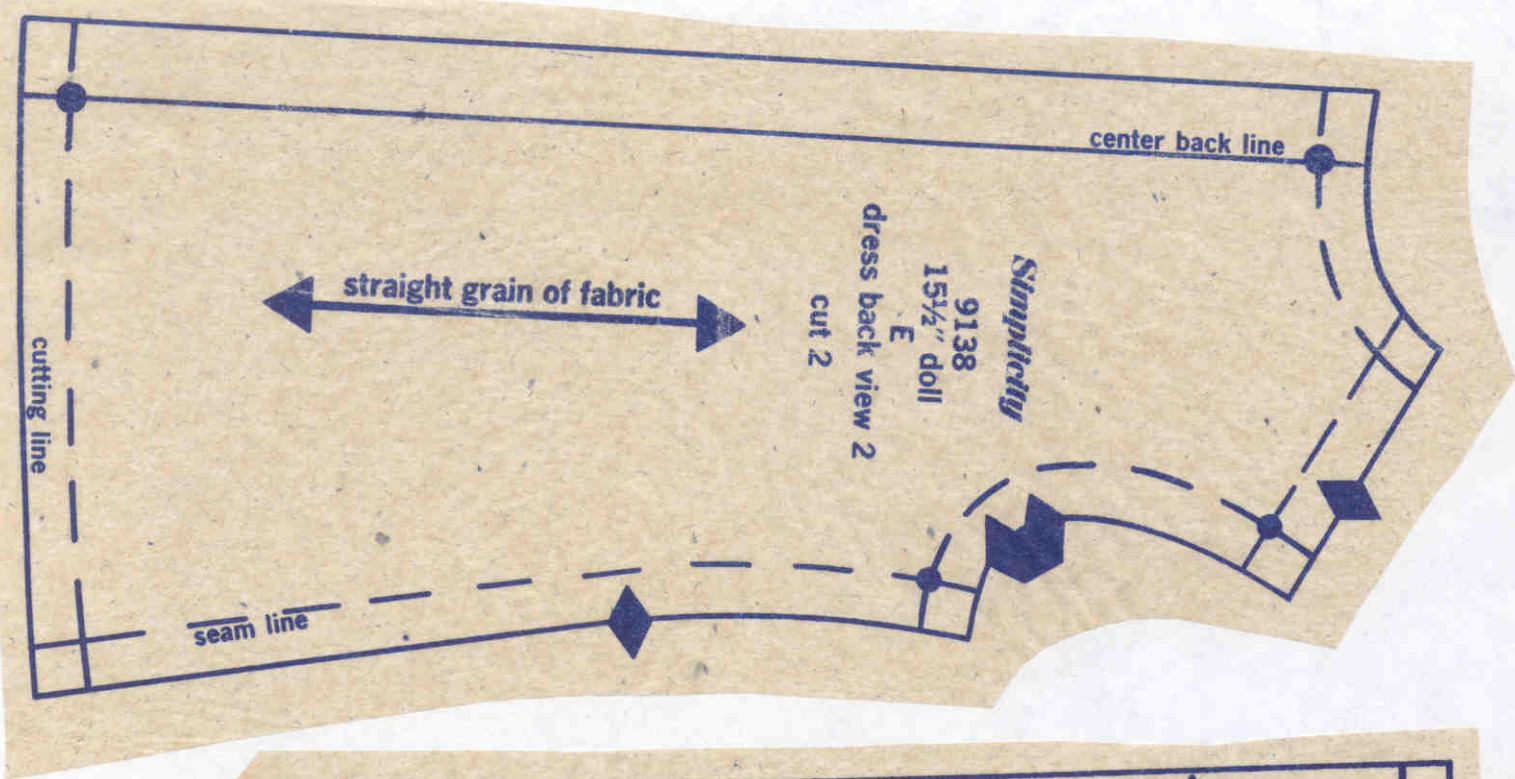
cutting line

Courtesy CrissyAndBeth.com

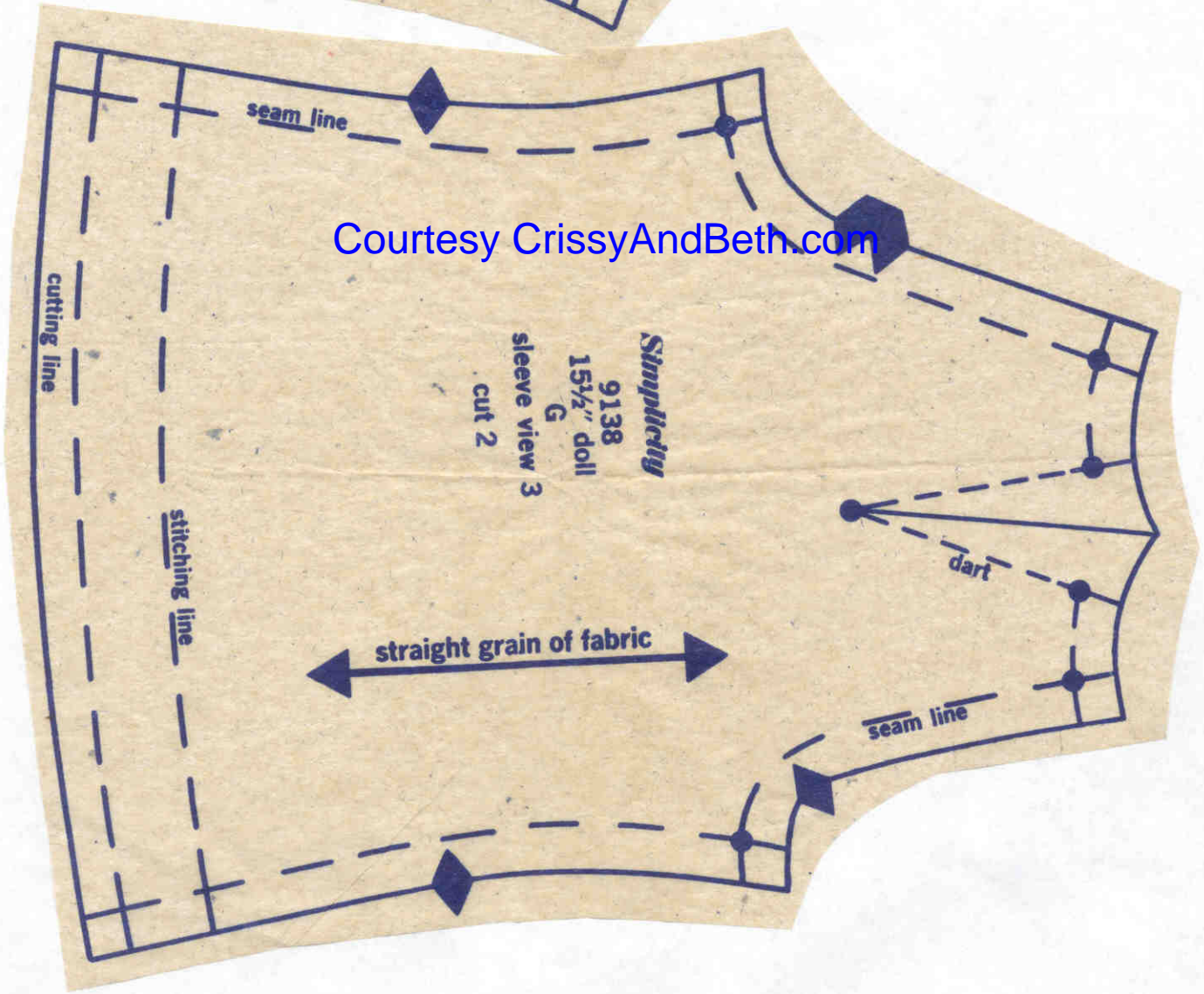
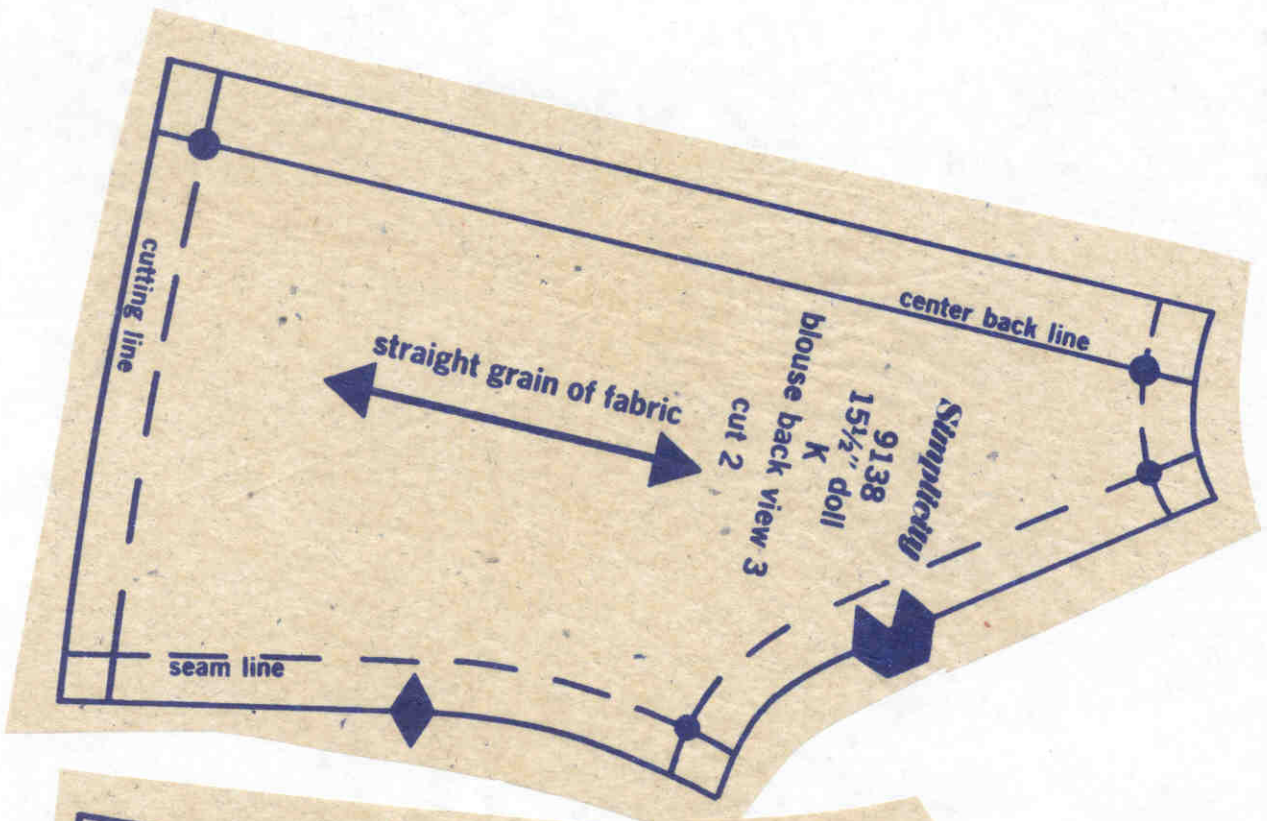


Courtesy CrissyAndBeth.com





Courtesy CrissyAndBeth.com



cutting line

fold line

center

place on straight grain of fabric

**Simplicity**

**9138**

**15½" doll**

**L**

**skirt front and back**

**view 3**

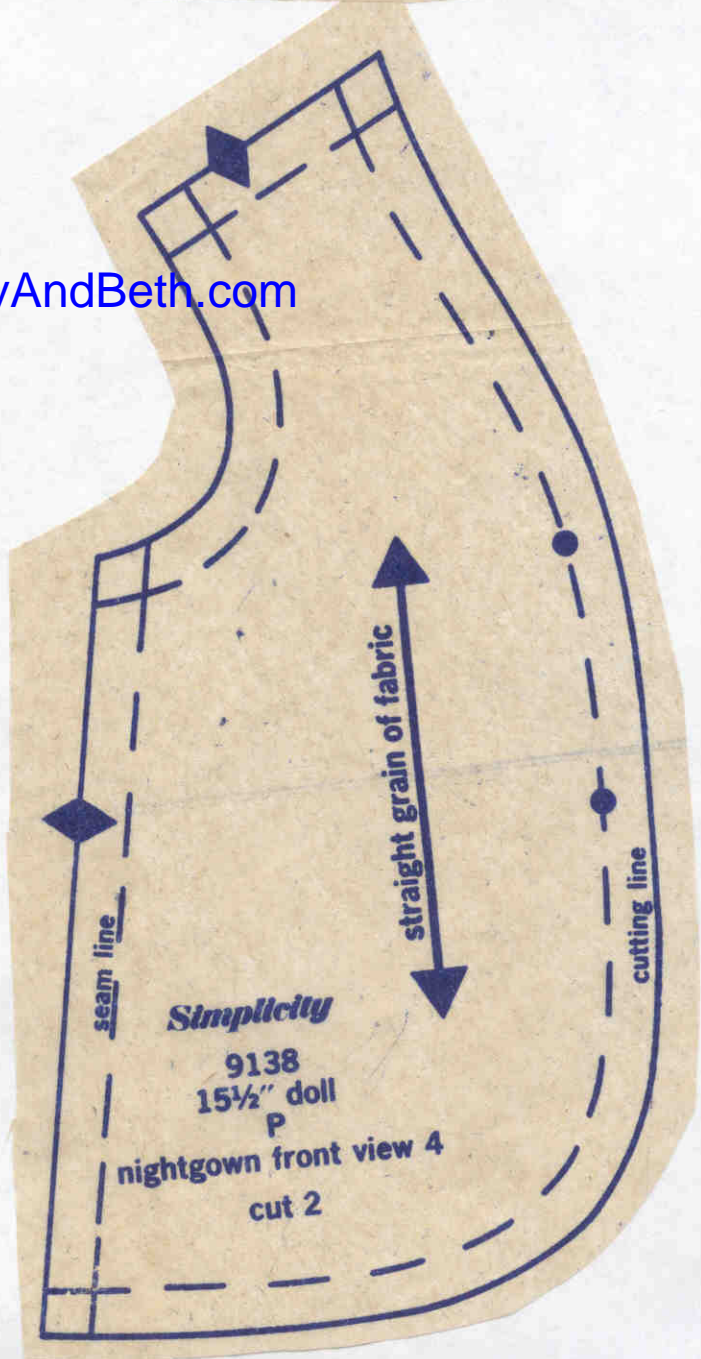
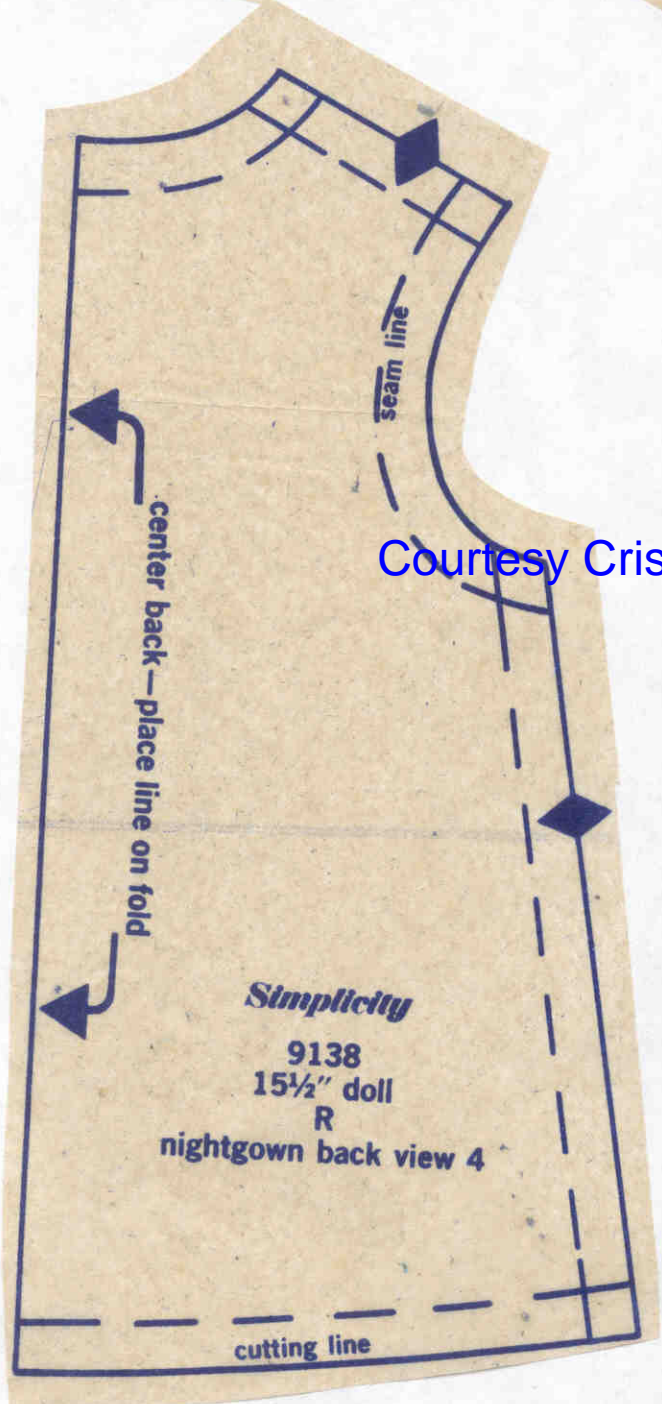
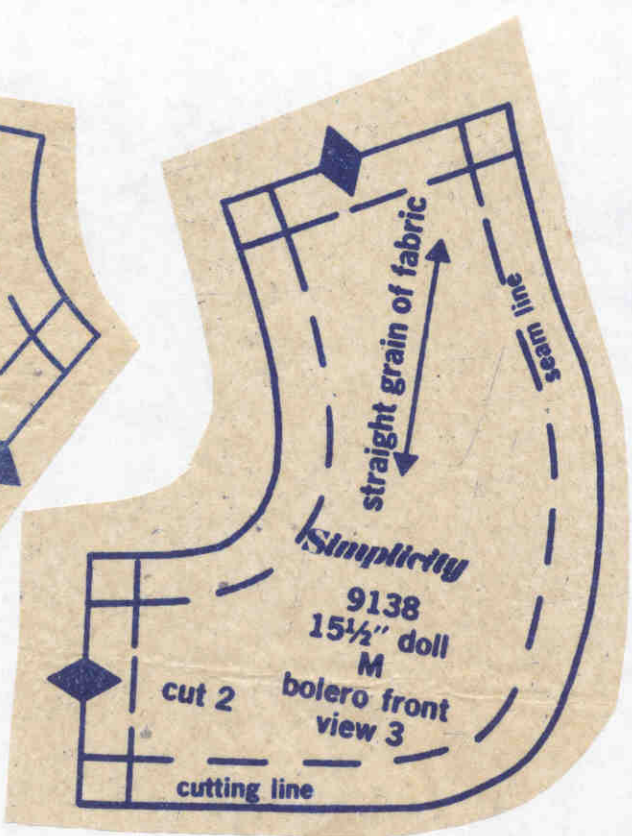
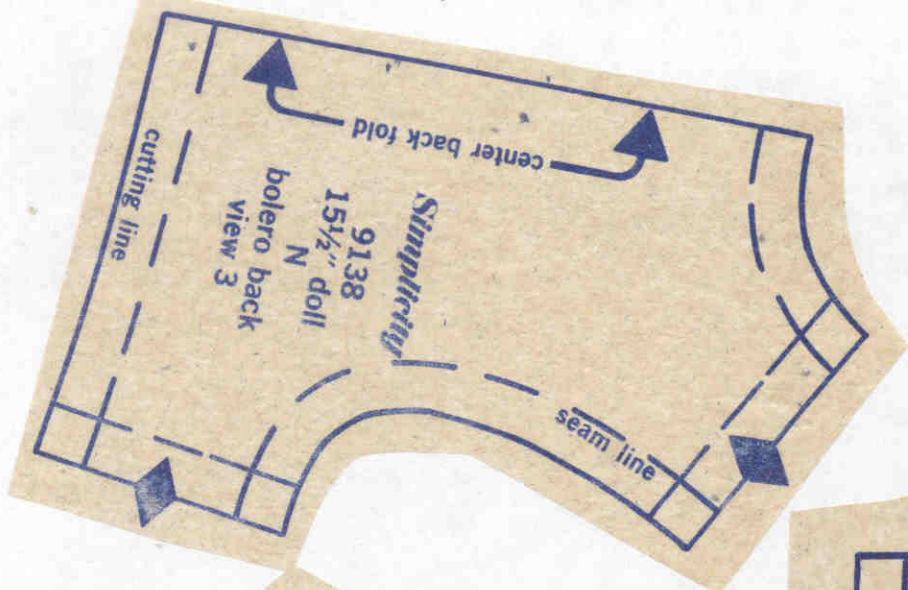
**cut 2**

Courtesy CrissyAndBeth.com

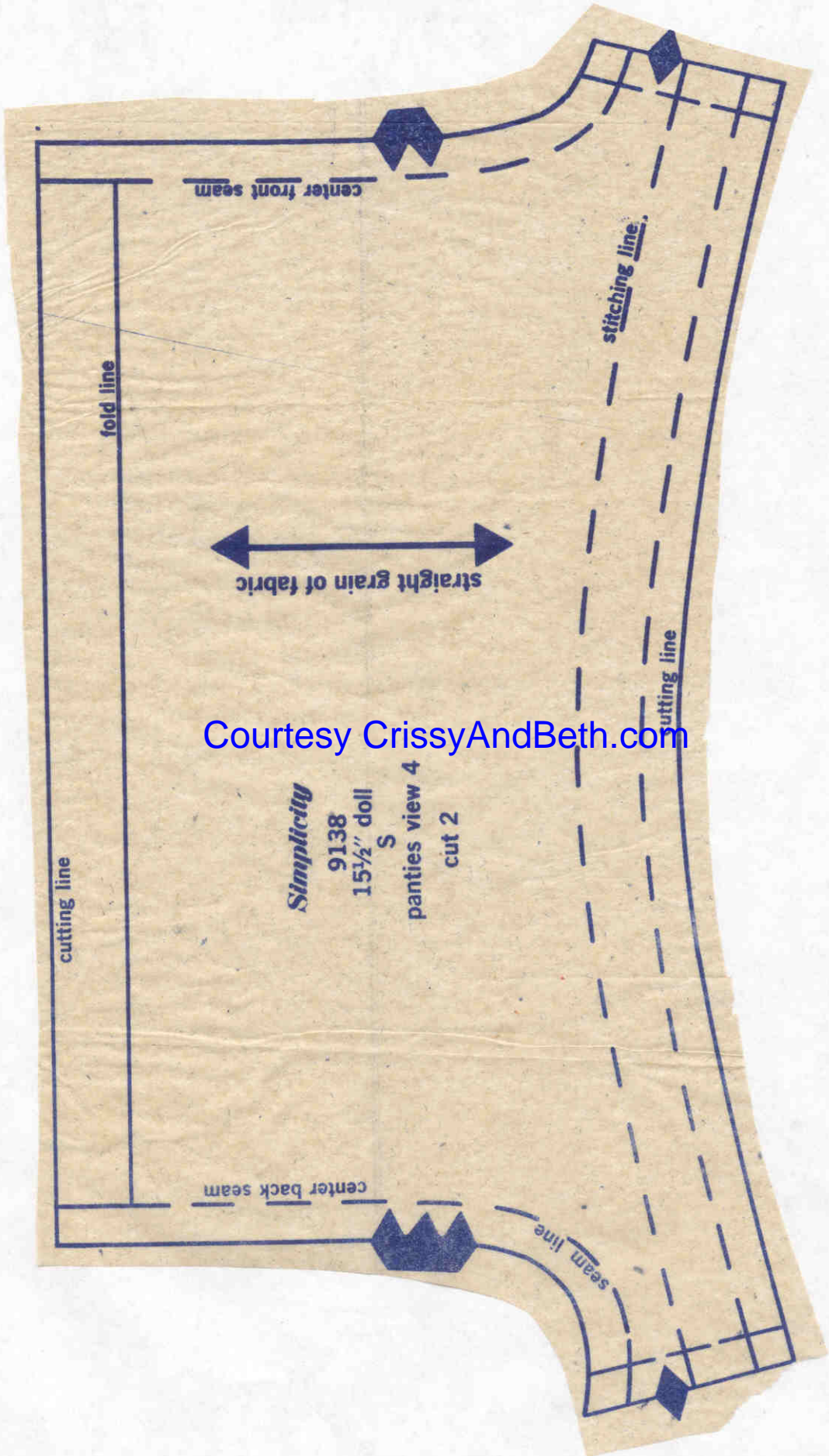
cutting line

seam line

seam line



Courtesy CrissyAndBeth.com



Courtesy CrissyAndBeth.com

*Simplicity*

9138

15½" doll

S

panties view 4

cut 2

cutting line

fold line

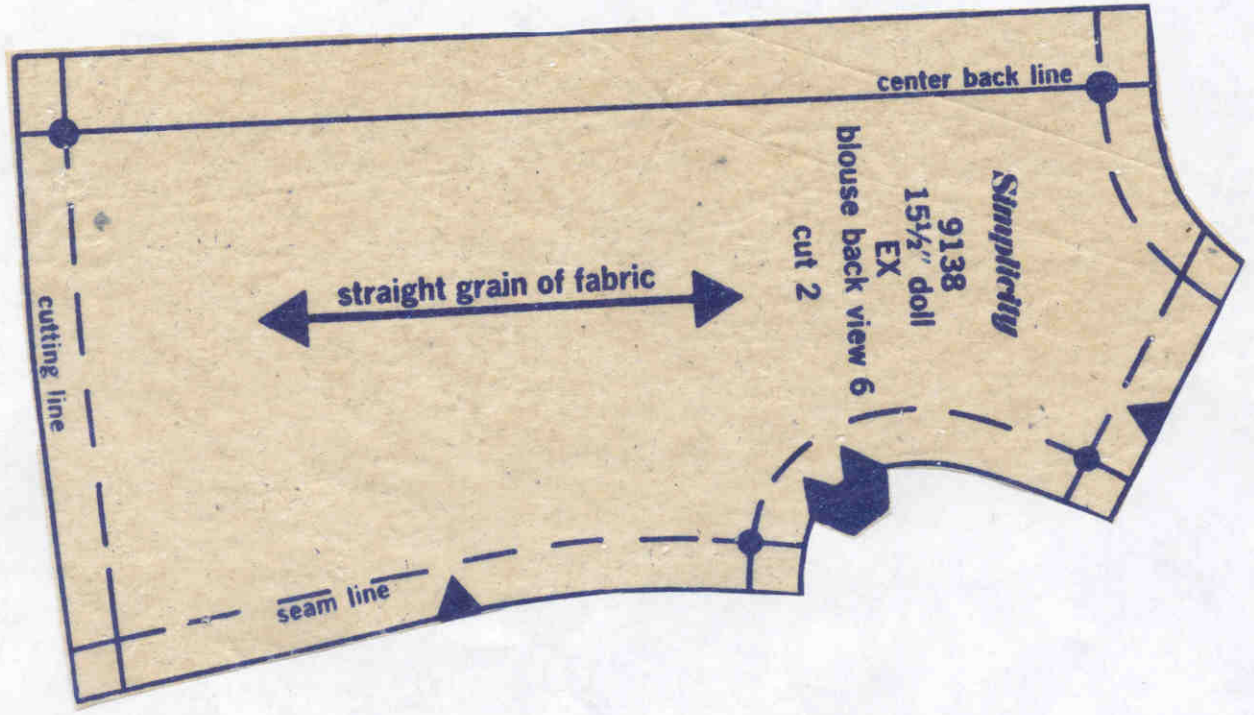
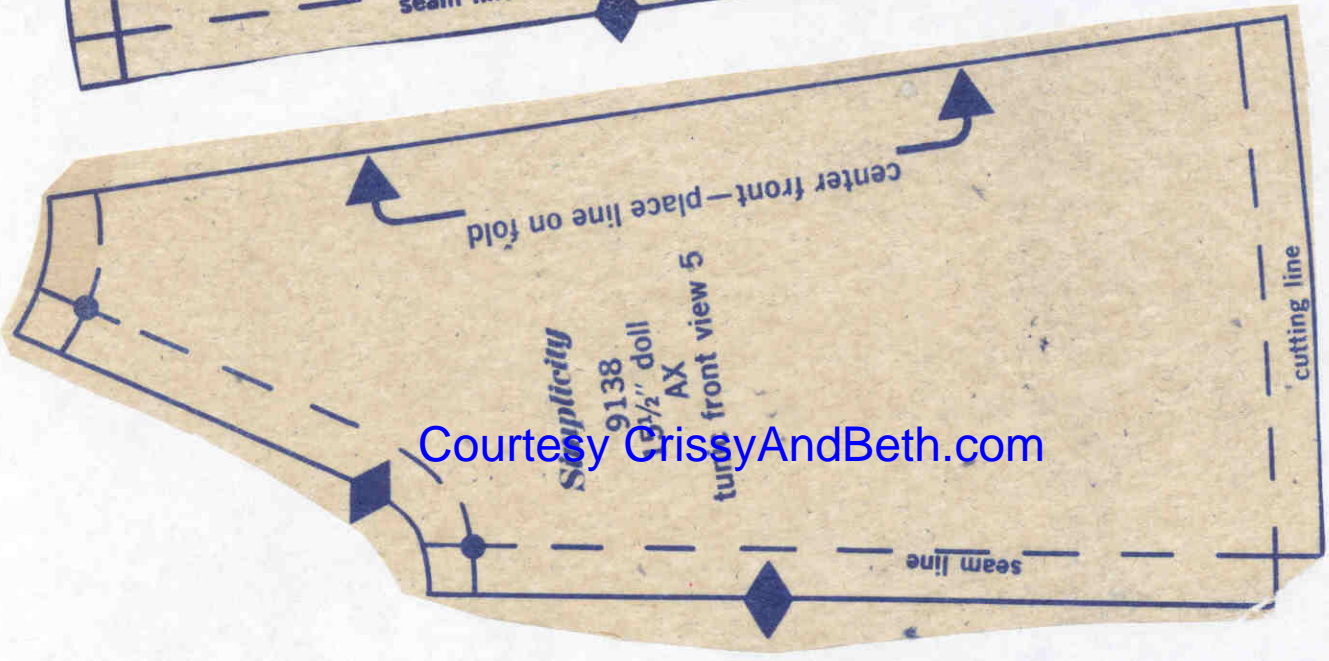
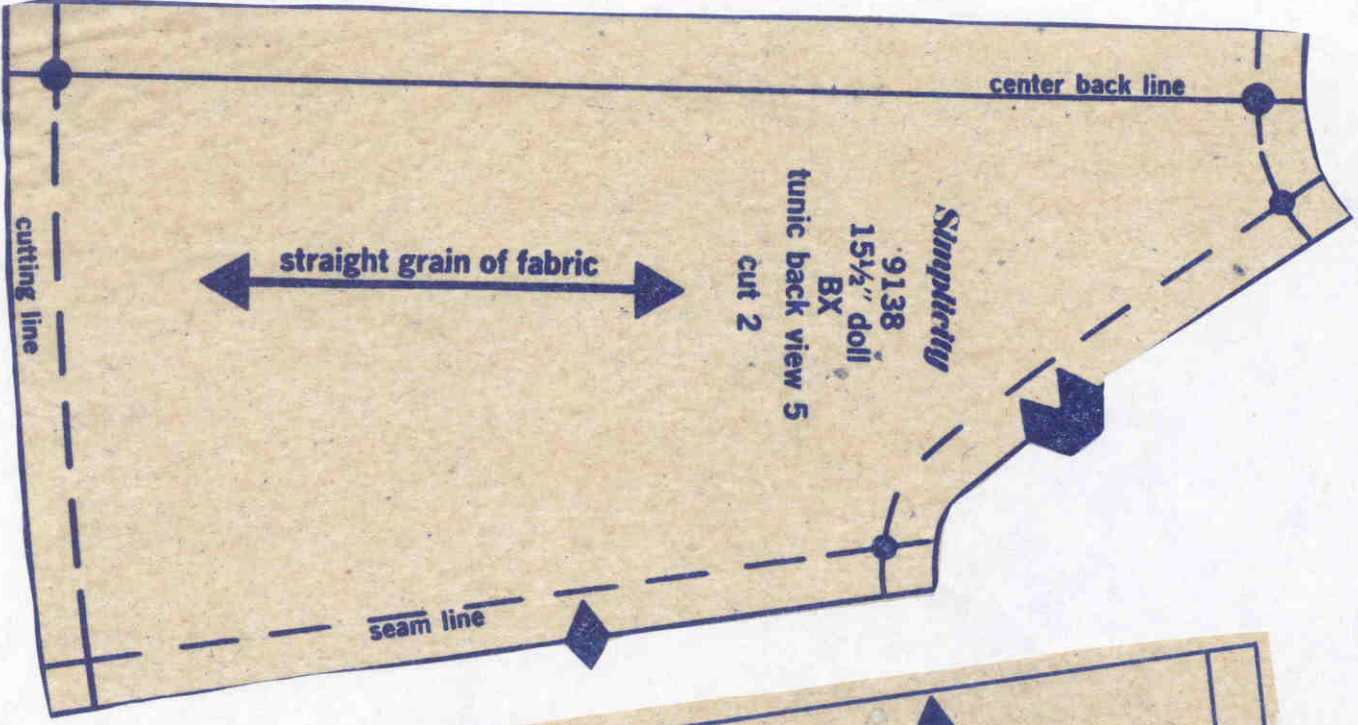
center front seam

stitching line

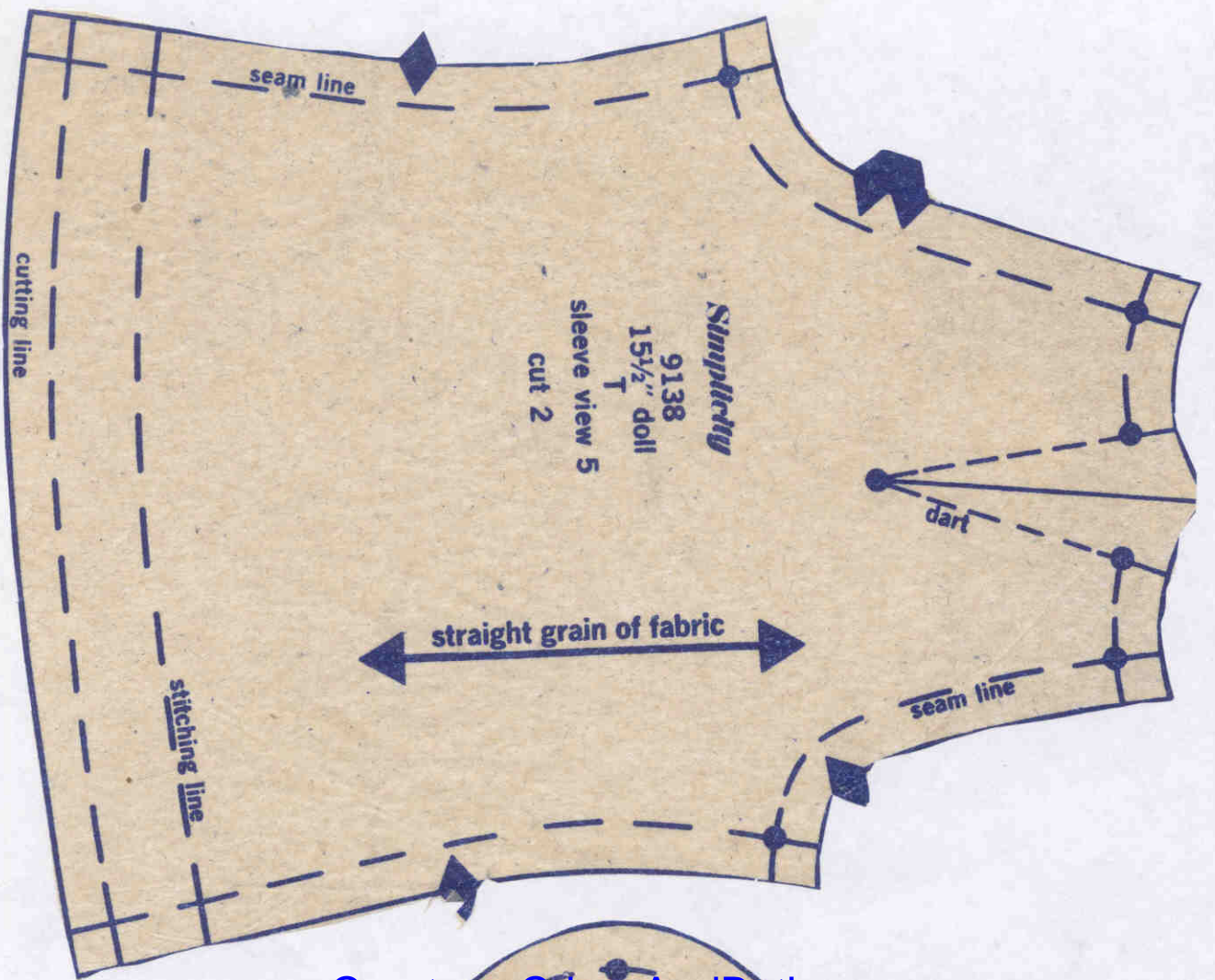
cutting line

center back seam

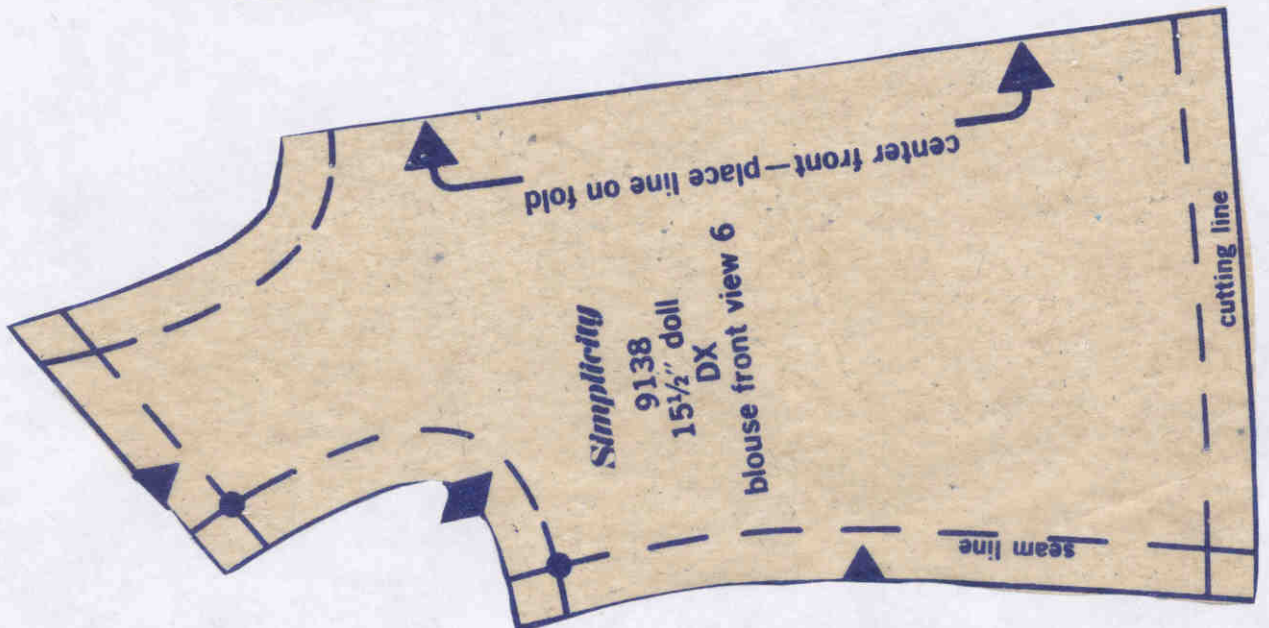
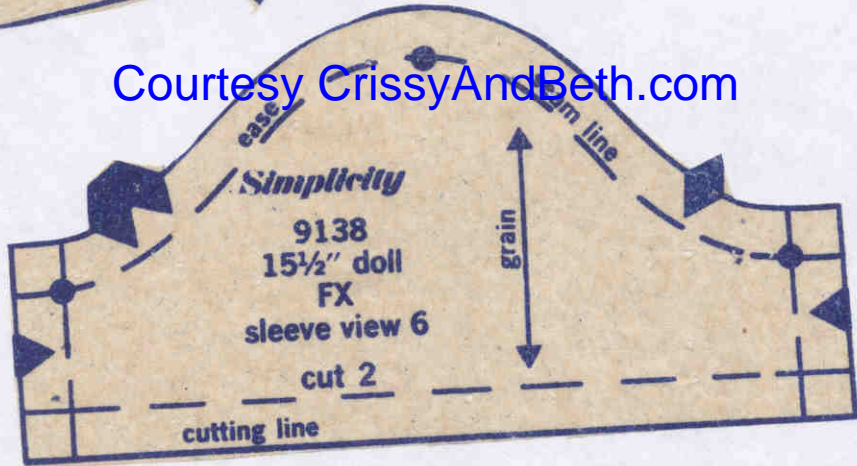
seam line

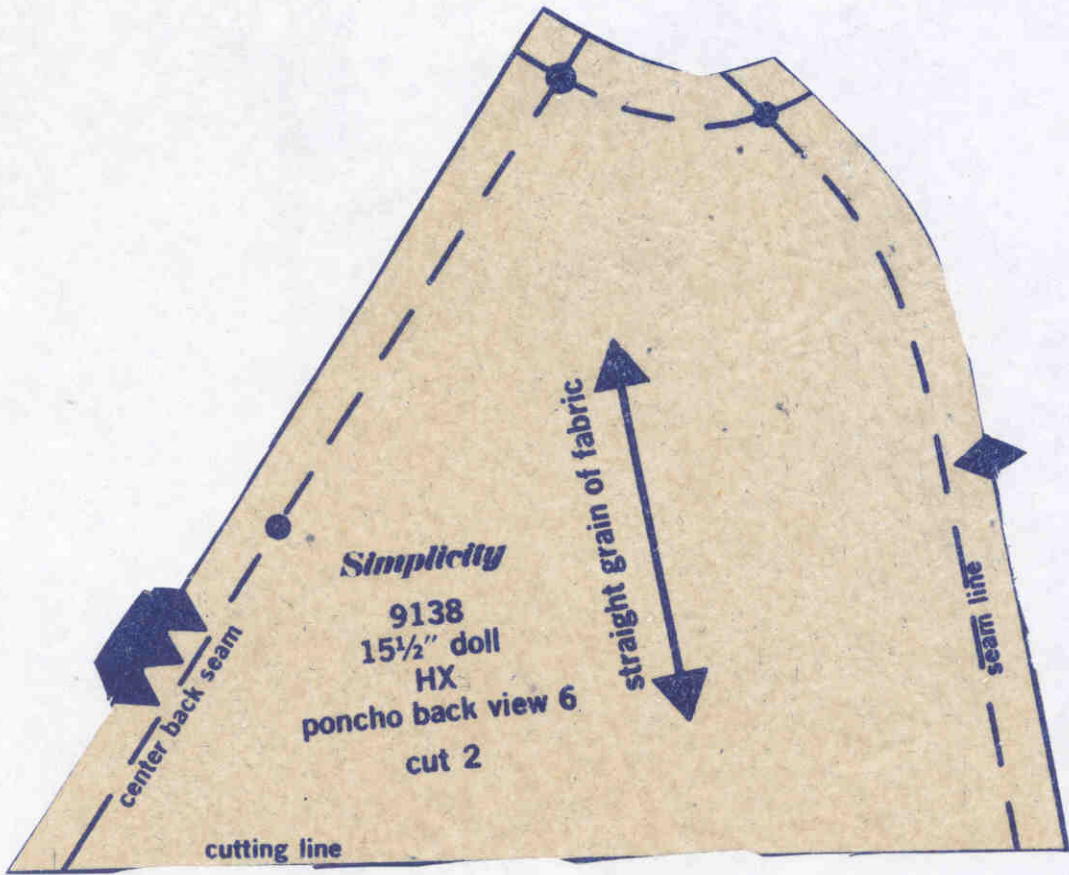


Courtesy CrissyAndBeth.com

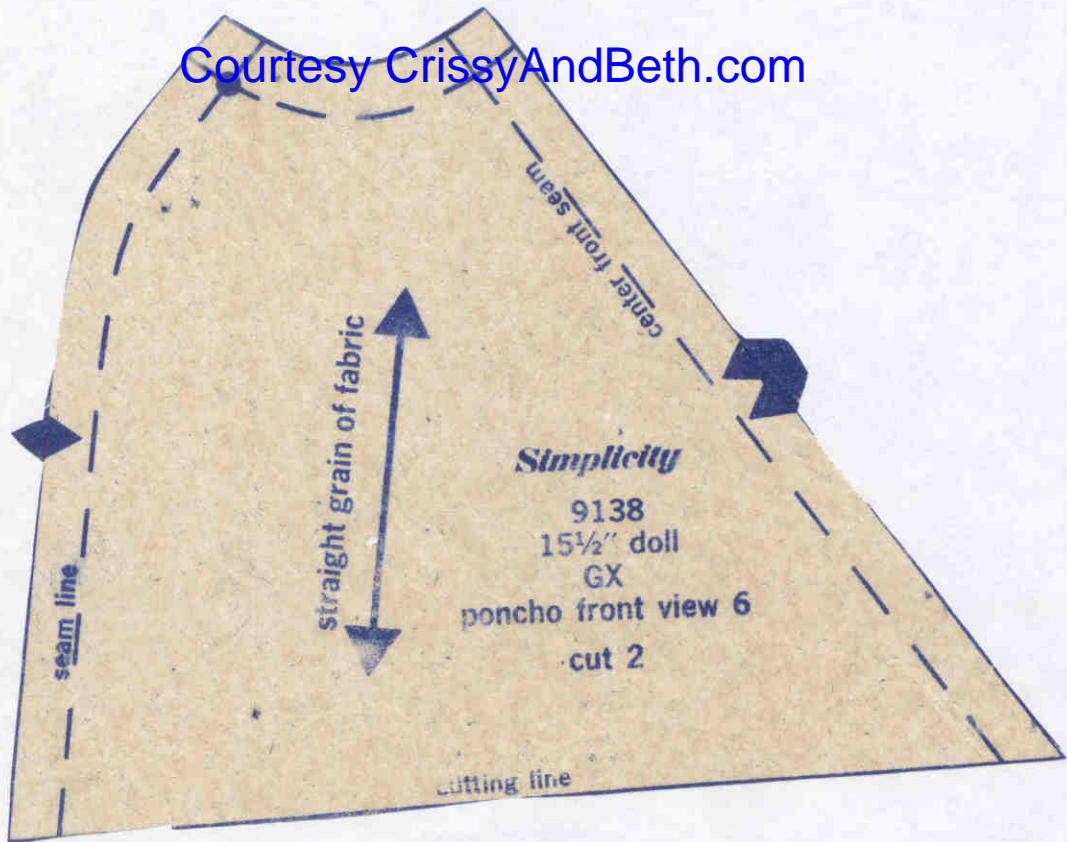


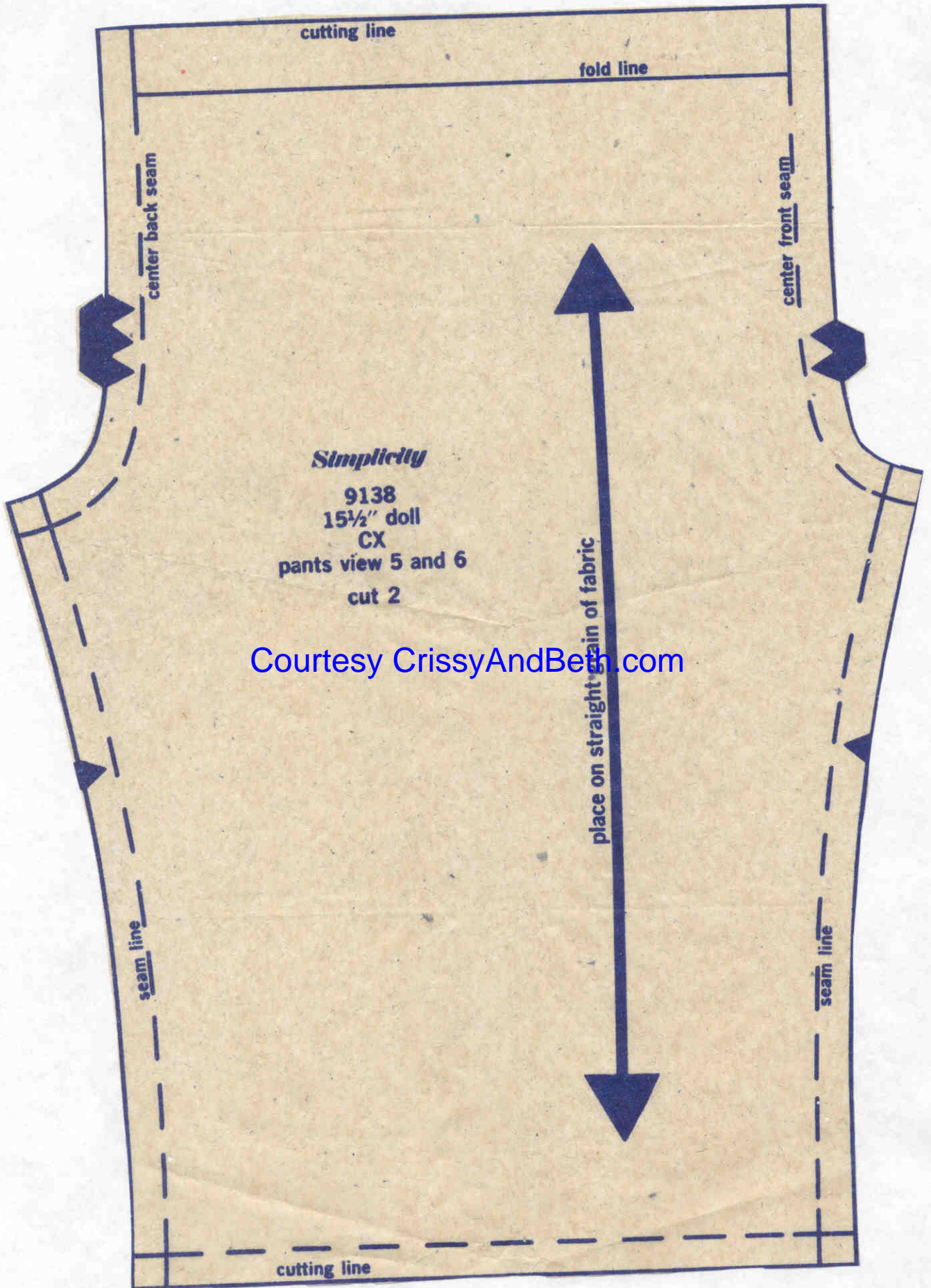
Courtesy CrissyAndBeth.com





Courtesy CrissyAndBeth.com





**Simplicity**  
9138  
15 1/2" doll  
CX  
pants view 5 and 6  
cut 2

Courtesy CrissyAndBeth.com