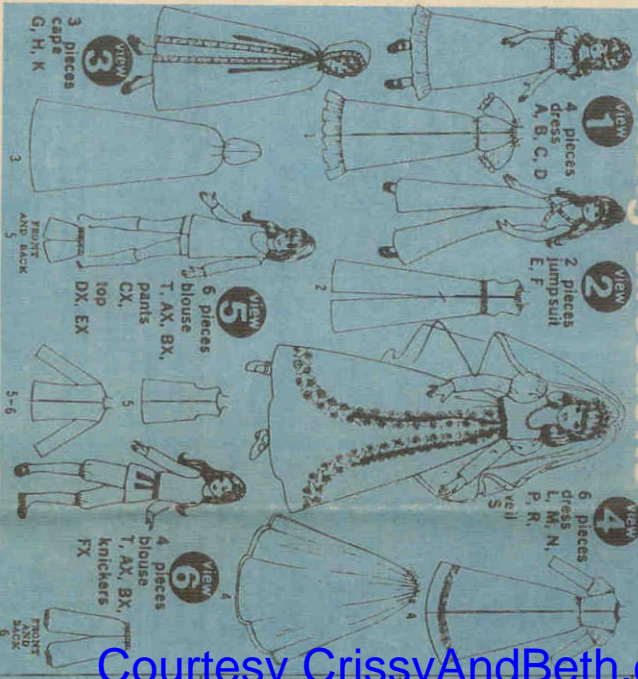
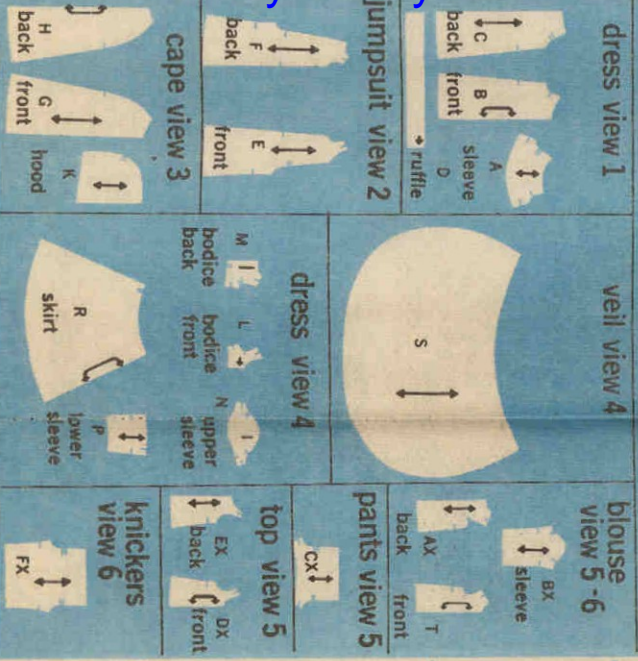


Simplicity 9698 cutting and sewing directions



Courtesy CrissyAndBeth.com

select your
pattern pieces
according to the view
you have chosen
22 pieces given



NOTE: S
Press se
NOTE: T
using a I

NOTE:
bobbin t
Stitch, t
See ins

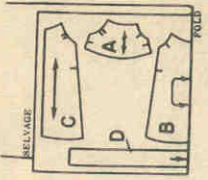
sleeves
1. Sitat
lower ex
With RIC
gather,
to armh
of front
matching
dots. Si
Clip cu
Stitch a
on noel
clippin
gather
2. a-g
edge w
small r
stitch
as sho
up gat
measur

Disregard any perforations on tissue pattern pieces

cutting layouts

view 1

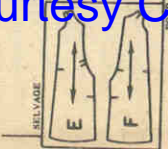
dress



35", 36", 44"
45" fabric
with or
without nap
all sizes

view 2

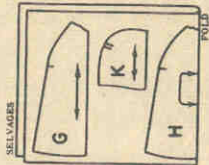
jumpsuit



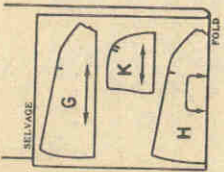
35", 36", 44"
45" fabric
with or
without nap
all sizes

view 3

cape



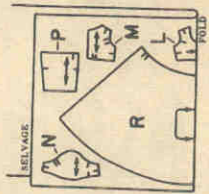
35", 36", 44"
45" fabric
with or
without nap
all sizes



44", 45", 54"
58", 60" fabric
with or
without nap
all sizes

view 4

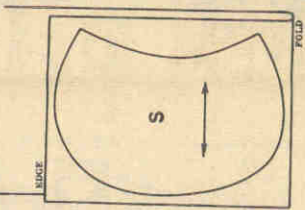
dress



35", 36",
44", 45"
fabric
with or
without
nap
all sizes

view 4

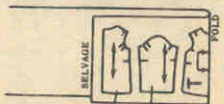
veil



72" or
108"
net or
tulle

view 6

blouse



35", 36", 44",
45", 54", 58",
60" fabric
with or
without nap
all sizes

view 5

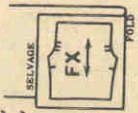
pants and top



35", 36", 44",
45", 54", 58",
60" fabric
with or
without nap
all sizes

view 6

knickers



35", 36", 44",
45", 54", 58",
60" fabric
with or
without nap
all sizes

Tas
Gat
sle
alo
Pul
b-w
arm
Gla
elac
smal
stitt
sho
Pul
mea
fast

ruff
3. a
1/4
edge
Gath
betw
dots
b-w
matc
Pull
Stitch

Courtesy CrissyAndBeth.com

sewing directions

NOTE: Stitch 1/4" seams, matching notches. Press seams open, unless otherwise instructed.

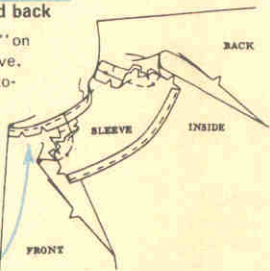
NOTE: To gather or ease, stitch along seam line, using a long machine-stitch.

VIEW 1 dress

NOTE: To gather with elastic thread, wind thread to bobbin by hand, without stretching. Stitch, using a long machine-stitch. See instructions with elastic thread.

sleeves, front and back

1. Stitch under 1/4" on lower edge of sleeve. With RIGHT sides together, pin sleeve to armhole edges of front and back, matching small dots. Stitch. Clip curves. Stitch under 1/4" on neck edge, clipping curves.



gathers and underarm seams

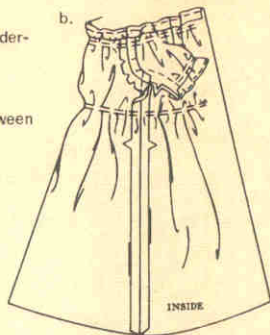
2. a—Gather neck edge with elastic thread between small dots along stitching lines, as shown. Pull up gathers to measure 8", fasten threads. Gather lower edge of sleeves with elastic thread between small dots along stitching lines. Pull up gathers to measure 3"; fasten threads.



b—Stitch entire underarm seams.

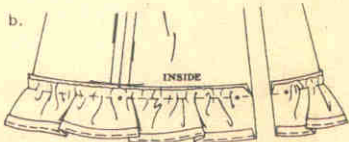
Gather dress with elastic thread between small dots along stitching lines, as shown.

Pull up gathers to measure 6-1/2"; fasten threads.



ruffle

3. a—Stitch under 1/4" on lower edge of ruffle. Gather upper edge between medium dots.



b—With RIGHT sides together, pin ruffle to dress, matching centers and small dots. Pull up stitching to fit. Stitch. Press seam up, pressing ruffle down.

finishing

4. Stitch RIGHT back edge to INSIDE along center line.

Lap RIGHT back over LEFT, matching centers; fasten with snaps.

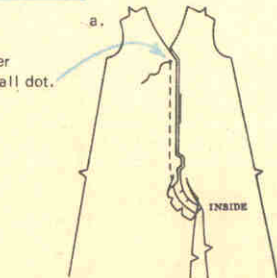


VIEW 2 jumpsuit

front and back

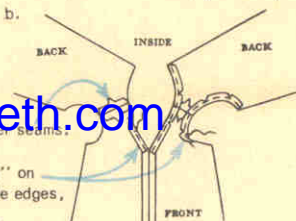
1. a—Stitch center front seam to small dot.

Clip curves.



b—Stitch shoulder seams.

Stitch under 1/4" on neck and armhole edges, clipping curves.



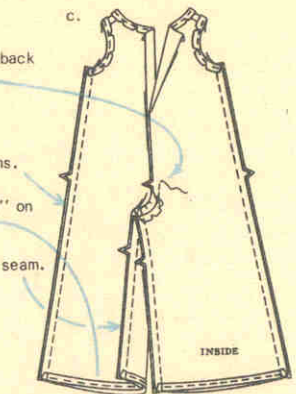
c—Stitch center back seam to notch.

Clip curves.

Stitch side seams.

Stitch under 1/4" on leg edges,

Stitch inner leg seam.



jeweled braid trim

2. Cut 2 pieces of trim, each 9" long. Hand-sew trim along neck edge as far as small dot at center front.

Lap RIGHT trim over LEFT front.

Bring ends to center back and tack at small dots.

Tack trim at center.



DIRECTIONS CONTINUED ON OTHER SIDE

finishing

3. Stitch RIGHT back edge to INSIDE along center line.
Lap RIGHT back over LEFT, matching centers; fasten with snaps.



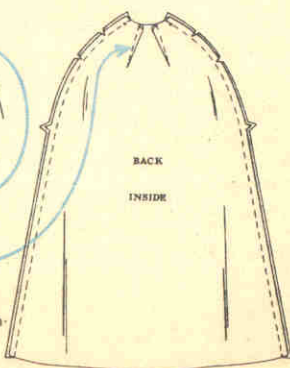
view 3

cape

front and back



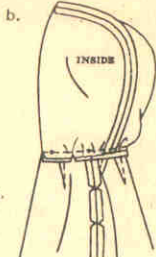
1. Make darts in front; press toward center. Make darts in back; press toward center. Stitch back to fronts at shoulder seams, matching small dots. Clip curves.



hood



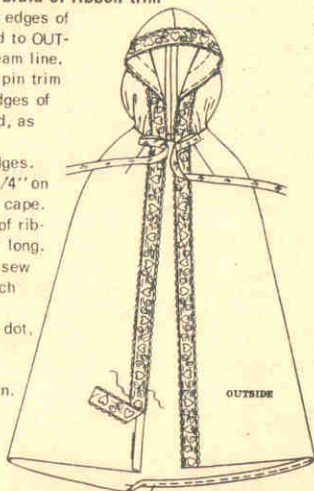
Gather lower edge between medium dots.



b—With RIGHT sides together, pin hood to neck edge of cape, matching centers and small dots. Pull up stitching to fit neck edge. Stitch. Clip curves. Press seam down.

embroidered braid or ribbon trim

3. Press front edges of cape and hood to OUTSIDE along seam line. On OUTSIDE, pin trim along front edges of cape and hood, as shown. Stitch both edges. Stitch under 1/4" on lower edge of cape. Cut 2 pieces of ribbon, each 13" long. On OUTSIDE, sew one end of each piece to front edge at small dot, turning under end to form loop, as shown.



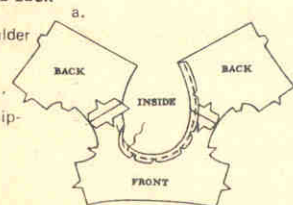
VIEW 4

dress and veil

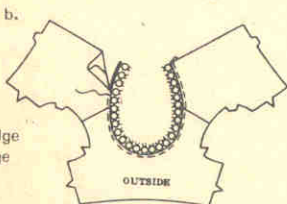
dress

bodice front and back

1. a—Stitch shoulder seams.



Press under 1/4" on neck edge, clipping curves.



b—Stitch neck edge over straight edge of picot edging.

sleeves

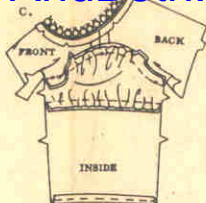
2. a—Gather top of upper sleeve between notches and lower edge between small dots.



b—With RIGHT sides together, pin upper sleeve to lower sleeve, matching small dots. Pull up stitching to fit. Stitch.



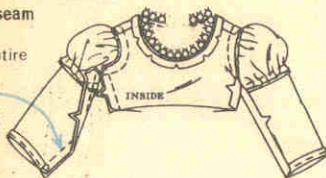
Press seam down. Stitch under 1/4" on lower edge.



c—With RIGHT sides together, pin sleeve to armhole edge, matching small dots. Pull up stitching to fit. Stitch. Press seam toward sleeve.

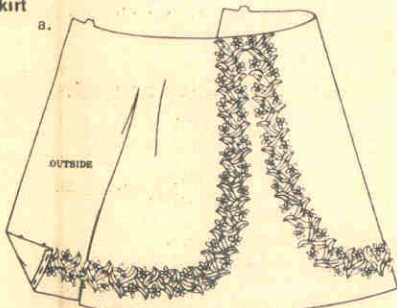
underarm seam

3. Stitch entire underarm seams.



skirt

a.



4. a—Stitch under 1/4" on lower edge. On OUTSIDE, pin one edge of lace trim to skirt along solid lines, as shown. Hand-sew.

b—Gather upper edge between medium dots.



c—With RIGHT sides together, pin skirt to bodice, matching centers and small dots.



Pull up stitching to fit. Stitch. Press seam up.

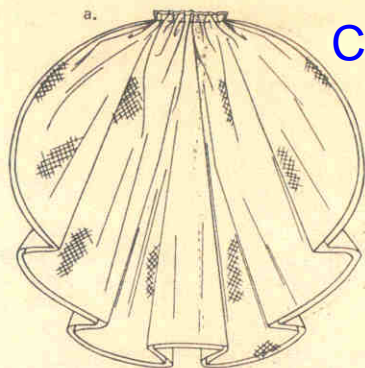
finishing

5. Stitch RIGHT back edge to INSIDE along center line. Lap RIGHT back over LEFT, matching centers; fasten with snaps.

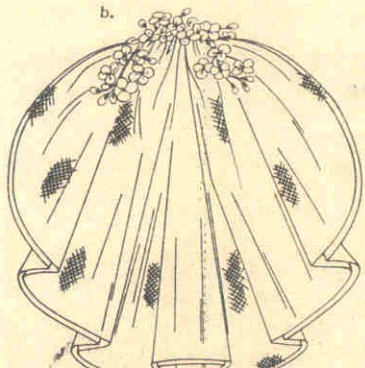


Tie ribbon sash, as shown on front of envelope.

veil



1. a—Pin the two veil sections together, having raw edges even. Hand-gather along seam lines. Pull up gathers to measure 2-3/4"; fasten thread.



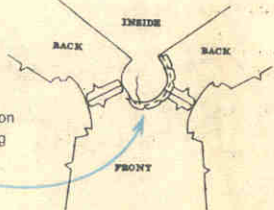
b—Tack small flowers over gathers.

view 5

blouse

front and back

1. Stitch shoulder seams.



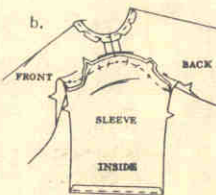
Stitch under 1/4" on neck edge, clipping curves.

sleeves

2. a—Ease top of sleeve between notches.



Stitch under 1/4" on lower edge.



b—With RIGHT sides together, pin sleeve to armhole edges, matching small dots.

Pull up stitching to fit. Stitch. Press seam toward sleeve.

underarm seams

3. Stitch entire underarm seams.



Stitch under 1/4" on lower edge.

finishing

4. Stitch RIGHT back edge to INSIDE along center line.

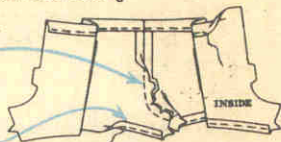


Lap RIGHT back over LEFT, matching centers; fasten with snaps.

pants

center front seam and casing

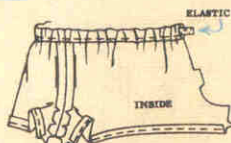
1. Stitch center front seam. Clip curves. Stitch under 1/4" on leg edges.



Press upper edge to INSIDE along solid line, forming casing. Stitch 3/8" from fold.

elastic

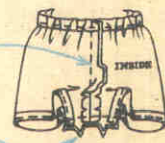
2. Cut a piece of elastic 7" long.



Insert elastic thru casing; stitch ends.

center back and inner leg seams

3. Stitch center back seam. Clip curves.

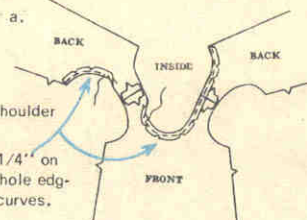


Stitch inner leg seam.

top

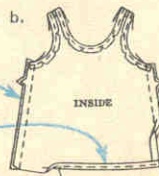
front and back

1. a—Stitch shoulder seams.



Stitch under 1/4" on neck and armhole edges, clipping curves.

b—Stitch side seams.



Stitch under 1/4" on lower edge.

finishing

2. Stitch RIGHT back edge to INSIDE along center line.



Lap RIGHT back over LEFT, matching centers; fasten with snaps.

view 6

blouse

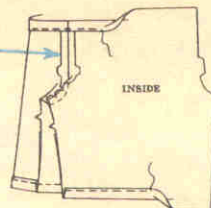
Make blouse same as for view 5.

Tie ribbon belt, as shown on front of envelope.

knickers

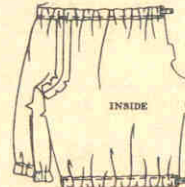
center front seam and casings

1. Stitch center front seam. Clip curves. Press upper and leg edges to INSIDE along solid lines, forming casings. Stitch 3/8" from fold.



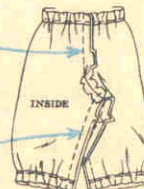
elastic

2. Cut a piece of elastic 7" long. Insert elastic thru casing at upper edge. Stitch ends. Cut two pieces of elastic, each 3-3/4" long. Insert elastic thru leg casings. Stitch ends.



center back and inner leg seams

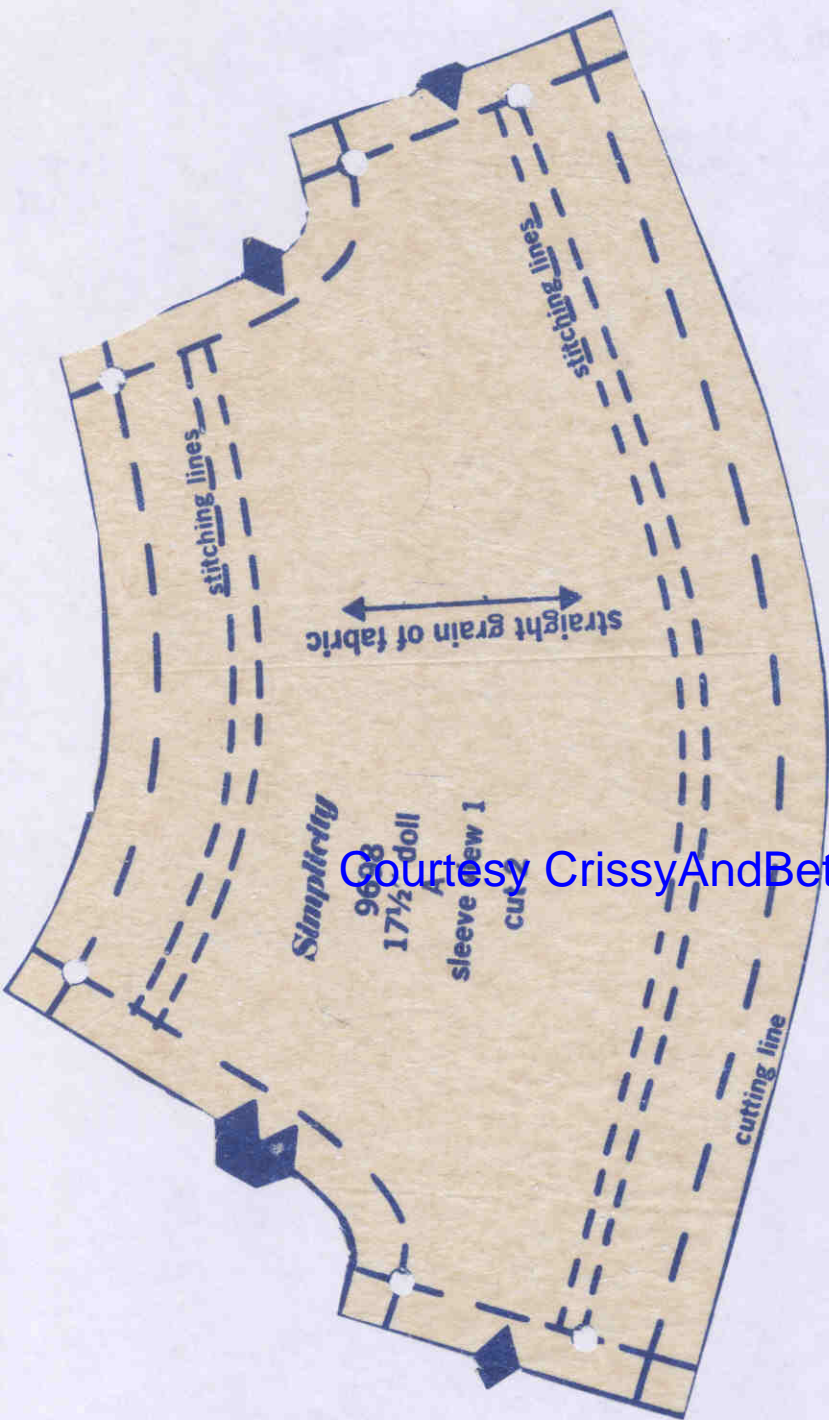
3. Stitch center back seam.



Clip curves.

Stitch inner leg seam.

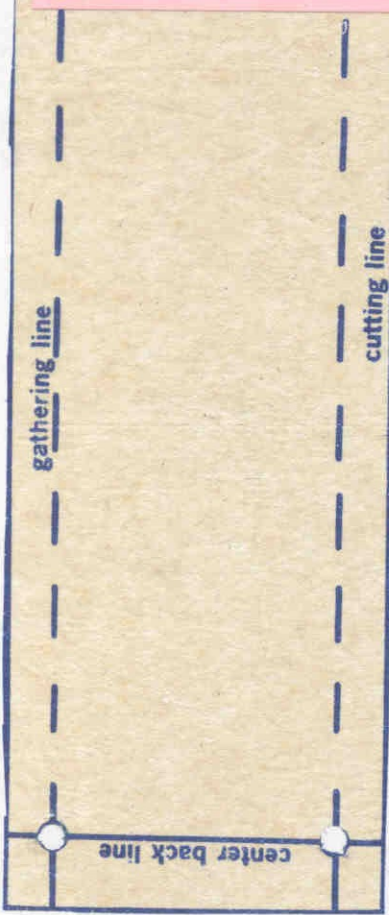
Courtesy CrissyAndBeth.com



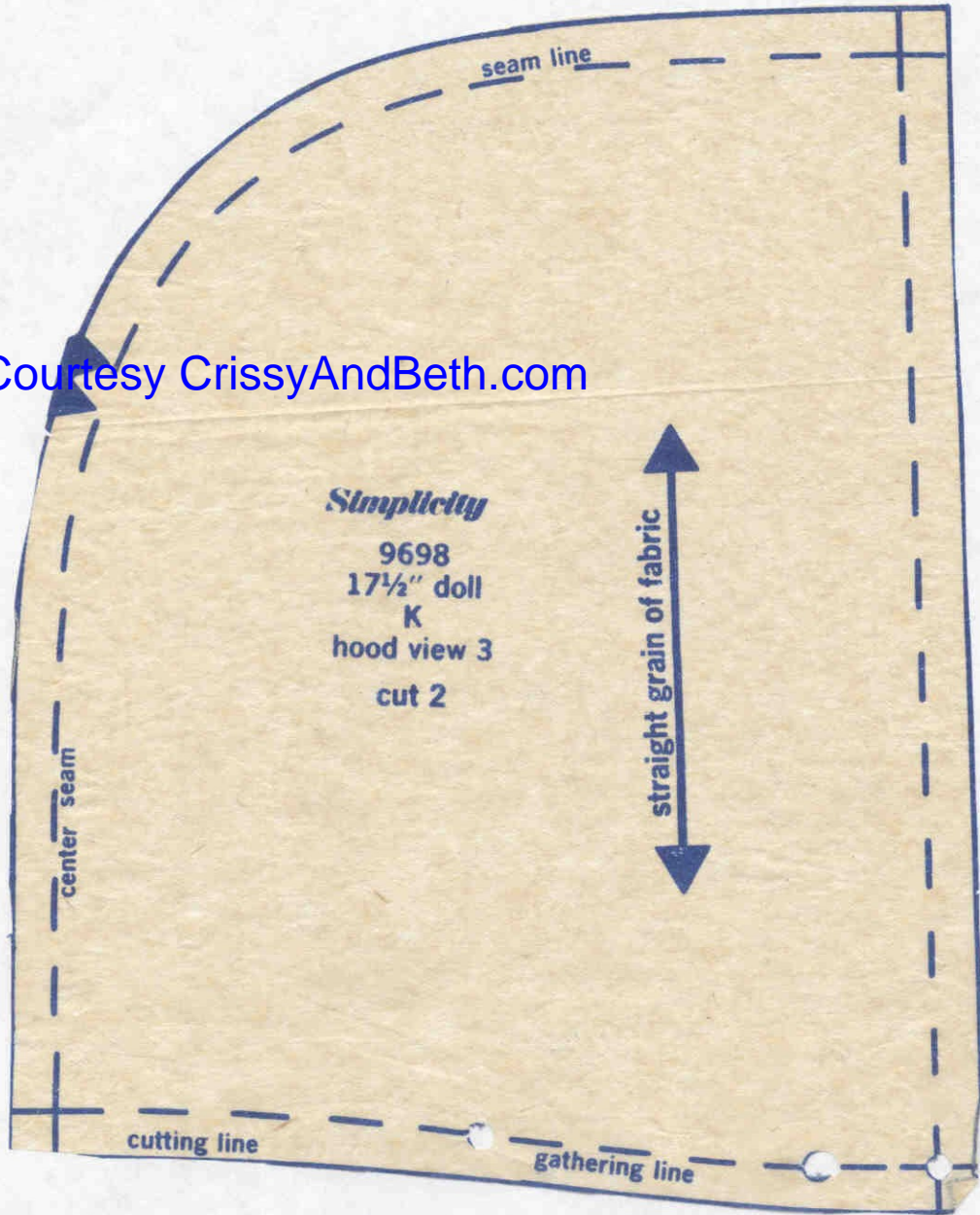
Courtesy CrissyAndBeth.com

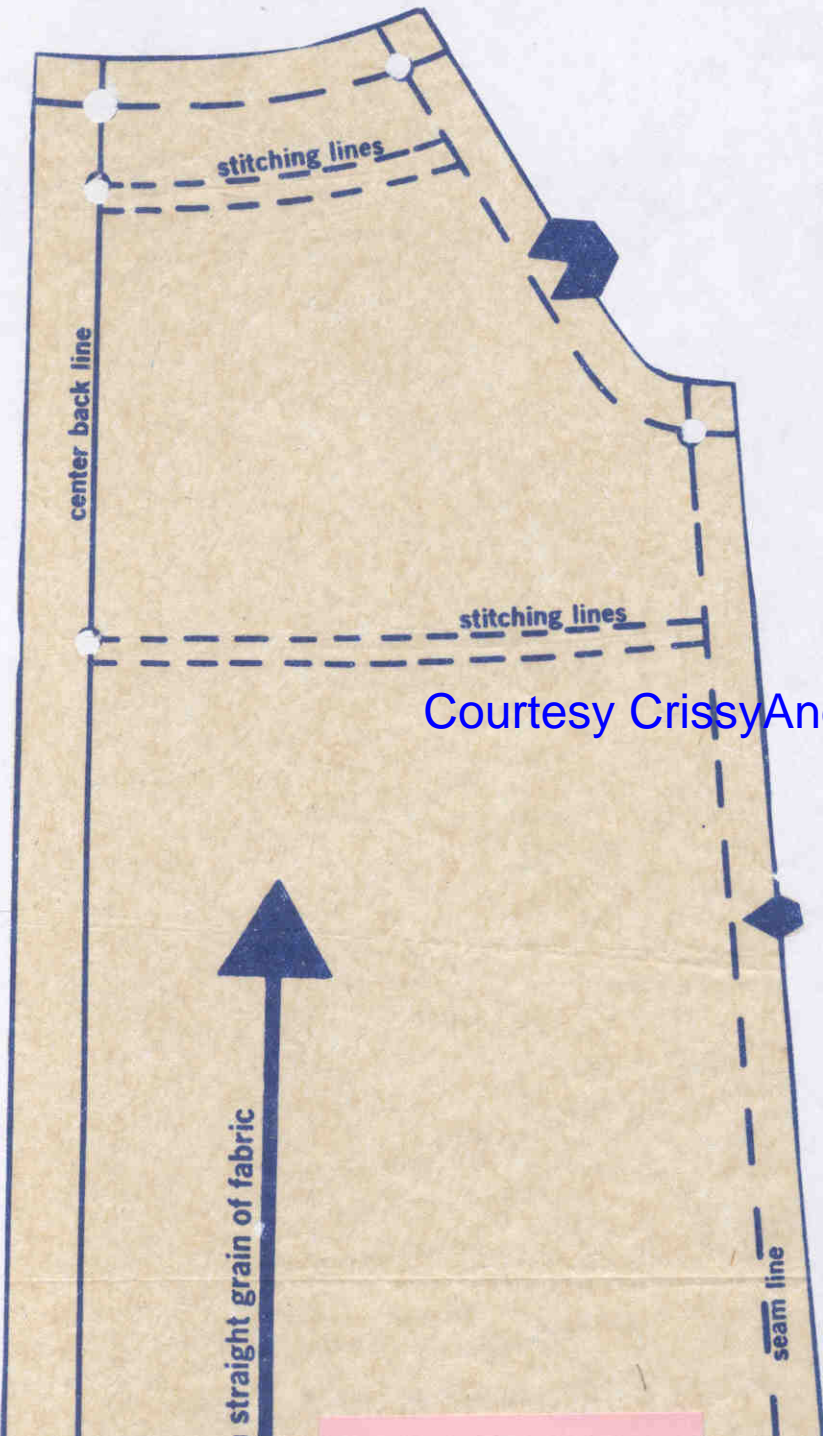


This piece is continued on next page.



Courtesy CrissyAndBeth.com





Courtesy CrissyAndBeth.com

This piece is continued on next page.

place on



Simplicity

9698

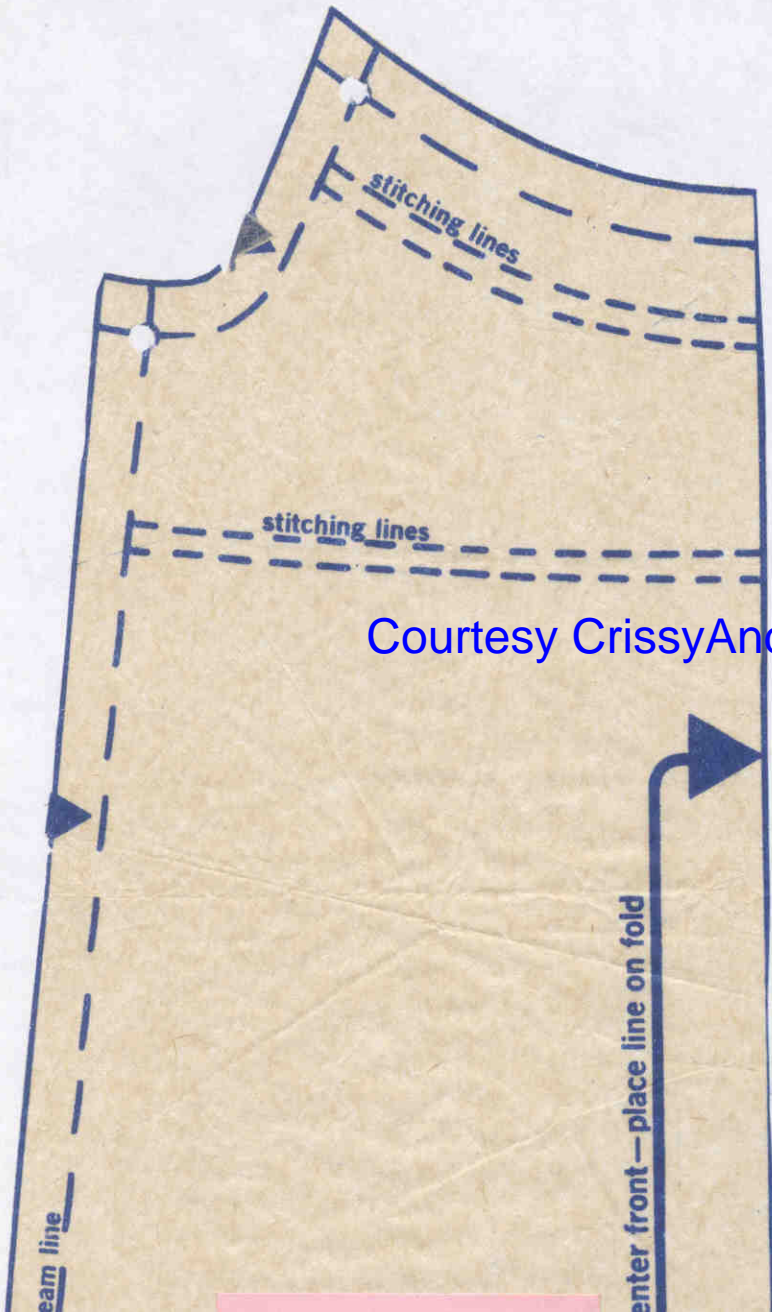
17½" doll

C

dress back view 1

Courtesy CrissyAndBeth.com

cutting line



Courtesy CrissyAndBeth.com

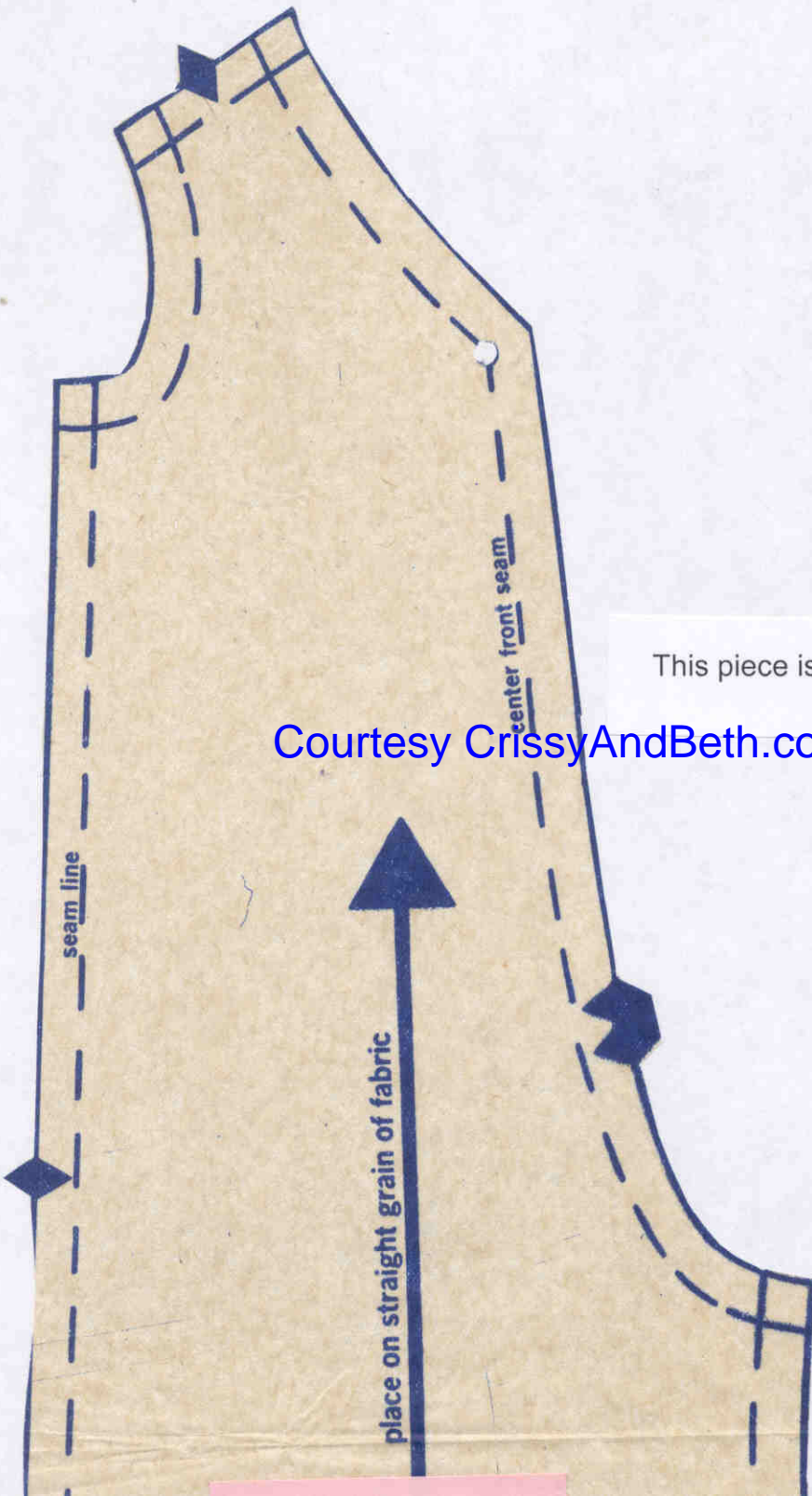
This piece is continued on next page.

Simplicity
9698
17½" doll
B
dress front view 1

Courtesy CrissyAndBeth.com

do not cut on this line

cutting line



This piece is continued on next page.

Courtesy CrissyAndBeth.com



Simplicity

9698
17½" doll

E

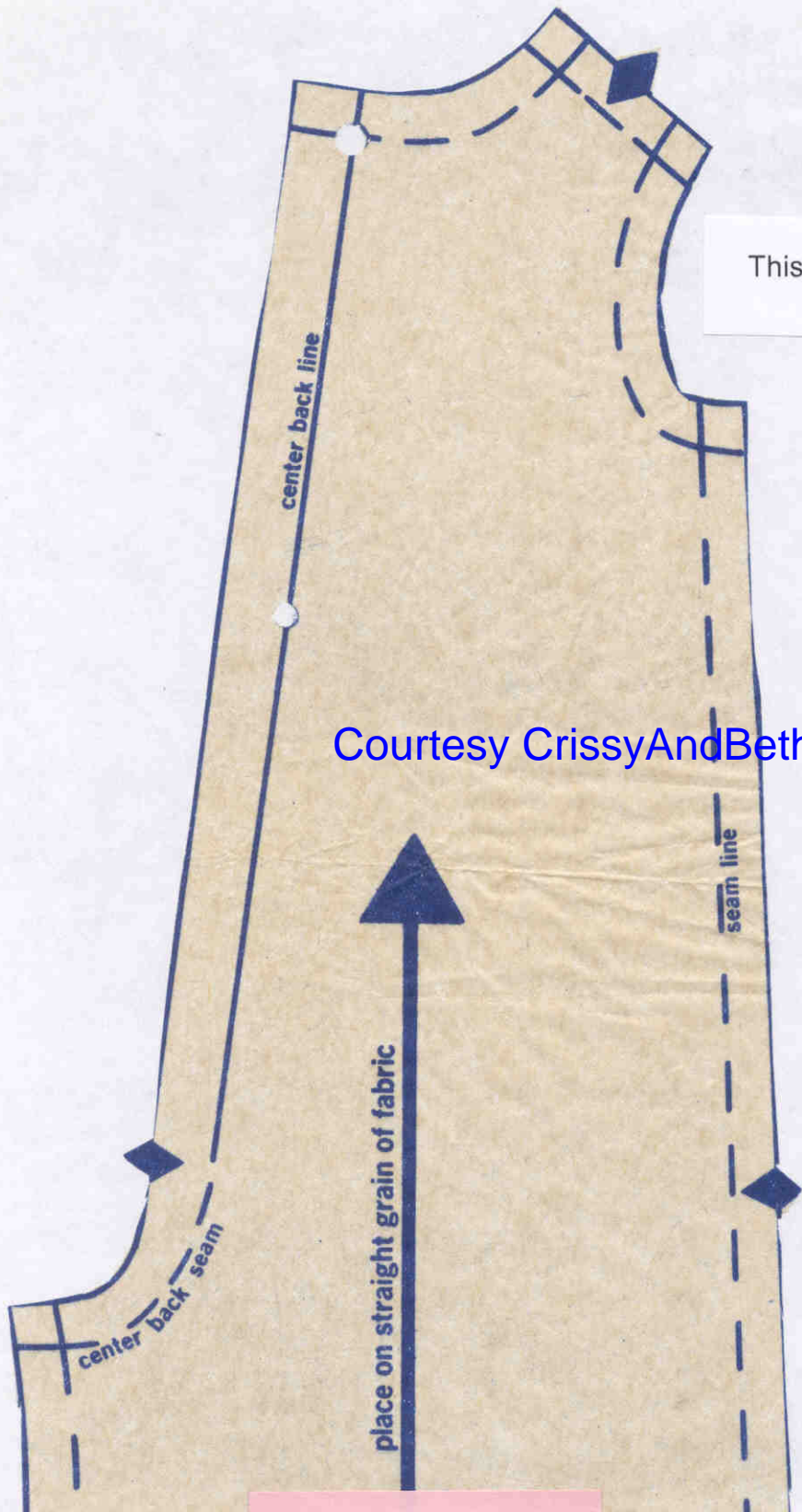
jumpsuit front view 2

Courtesy CrissyAndBeth.com

cutting line

This piece is continued on next page.

Courtesy CrissyAndBeth.com





Simplicity

9698

17½" doll

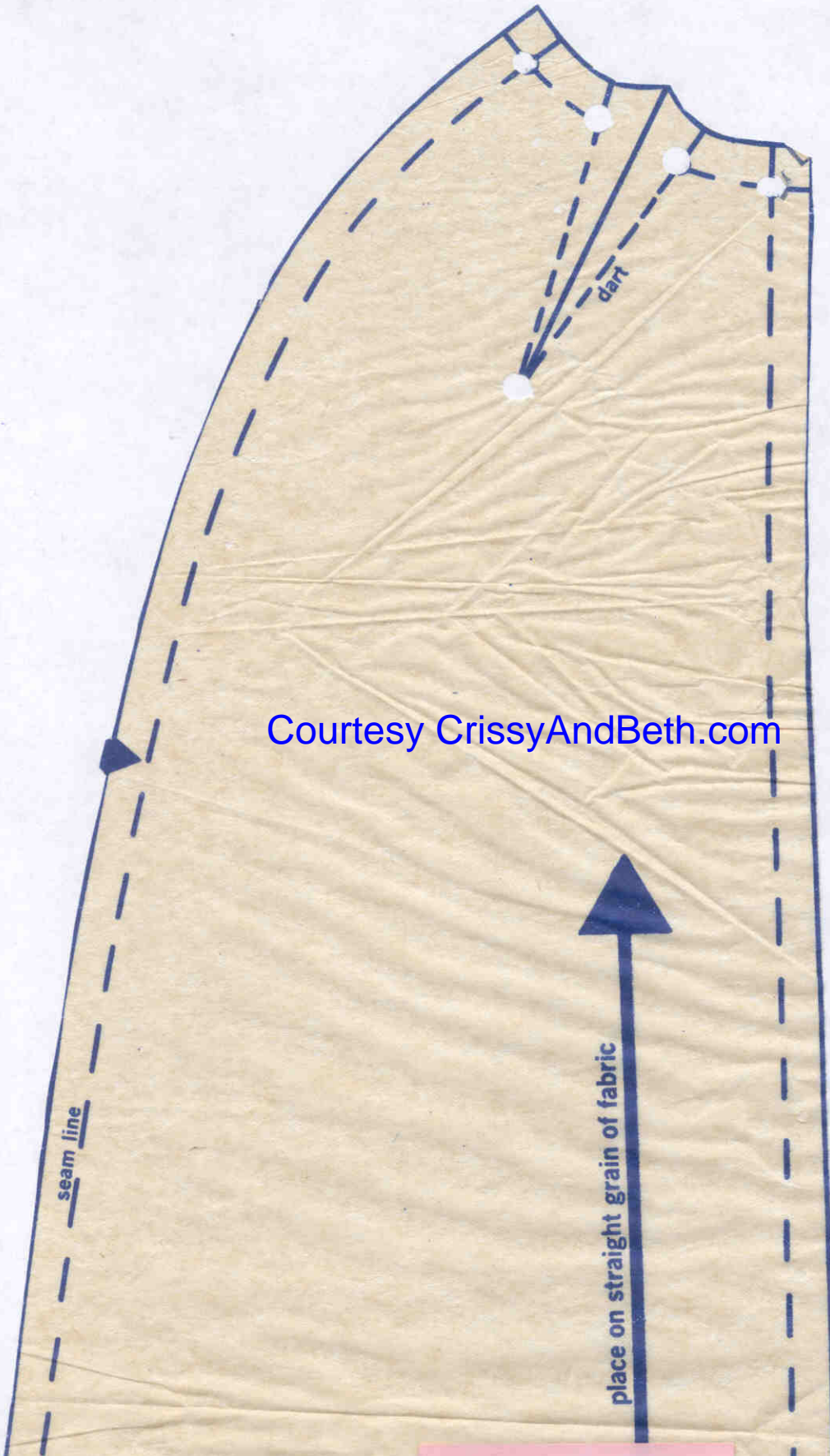
F

jumpsuit back view 2

Courtesy CrissyAndBeth.com

seam line

cutting line



Courtesy CrissyAndBeth.com

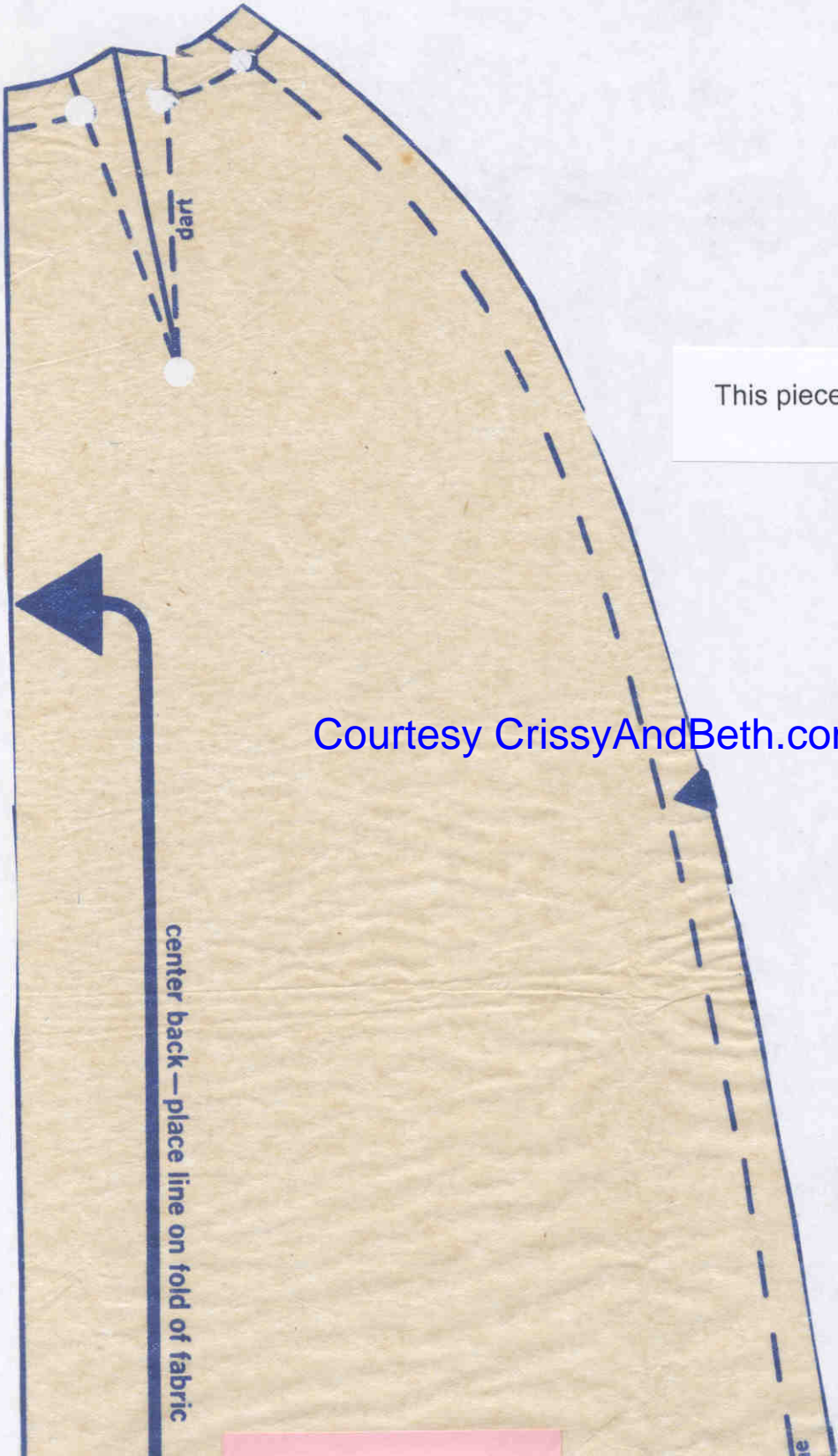
This piece is continued on next page.

Simplicity
9698
17½" doll
G
cape front view 3
cut 2



Courtesy CrissyAndBeth.com

cutting line



This piece is continued on next page.

Courtesy CrissyAndBeth.com

center back — place line on fold of fabric

Simplicity

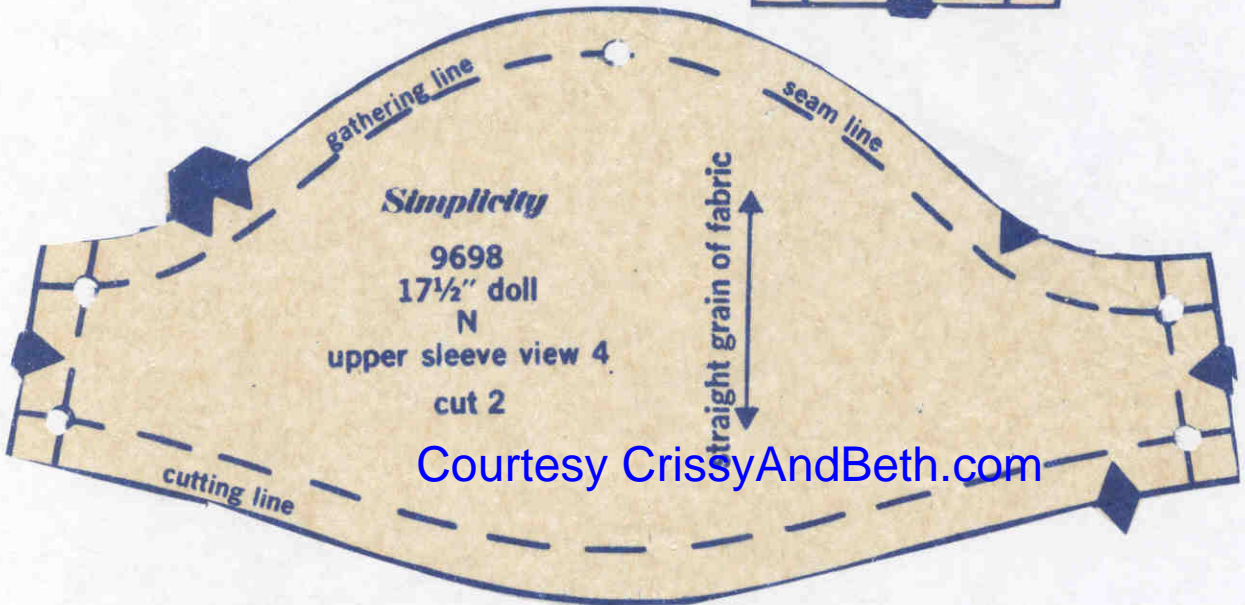
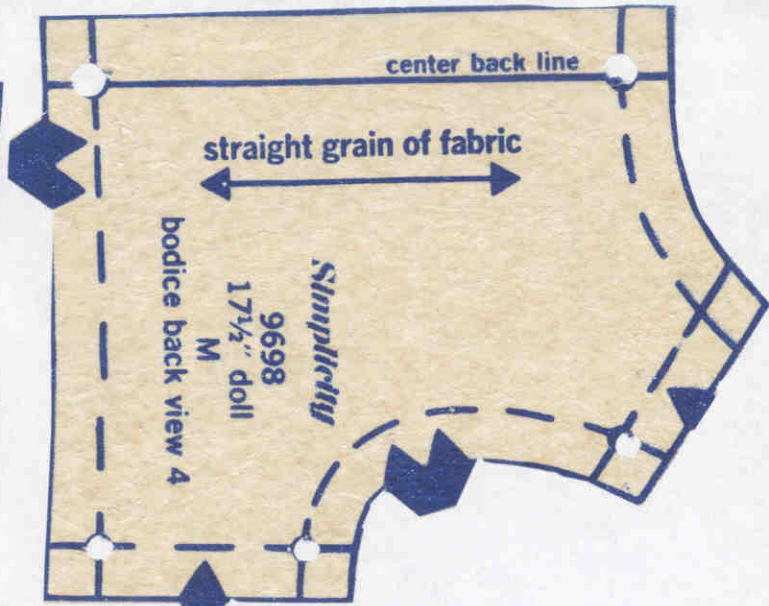
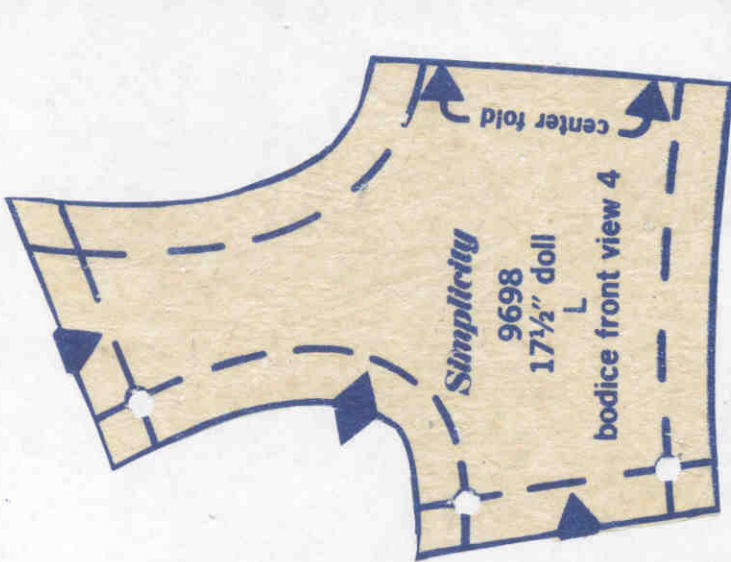
9698
17½" doll
H
cape back view 3

seam line

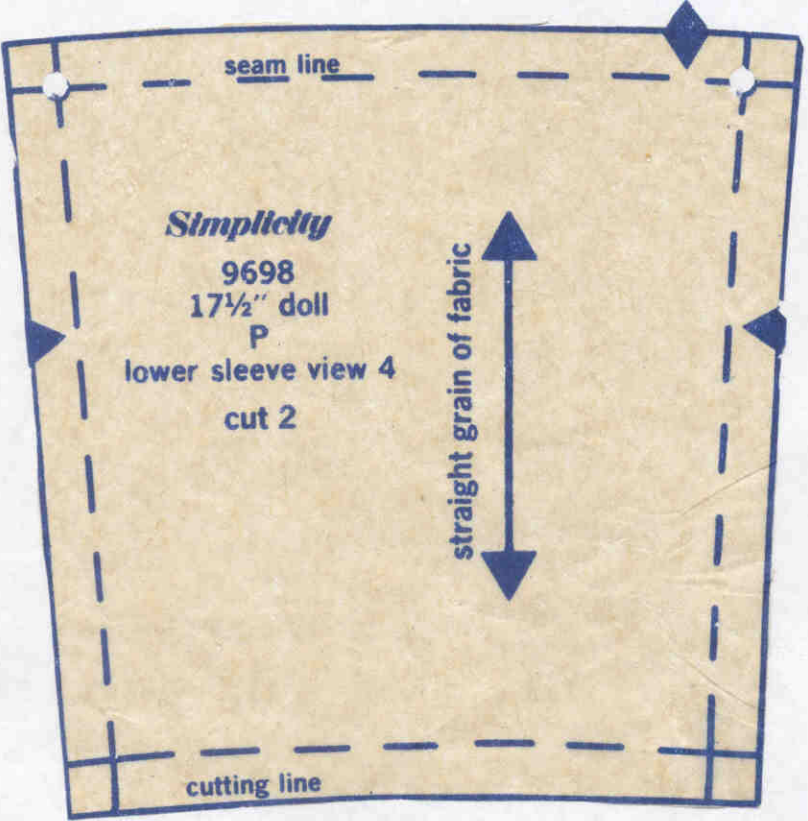
do not cut on this line

cutting line

Courtesy CrissyAndBeth.com



Courtesy CrissyAndBeth.com



This piece is continued on next page.

gathering line

center back line

Simplicity
9698
17½" doll
R
skirt view 4

Tape Pattern pieces Here

Courtesy CrissyAndBeth.com

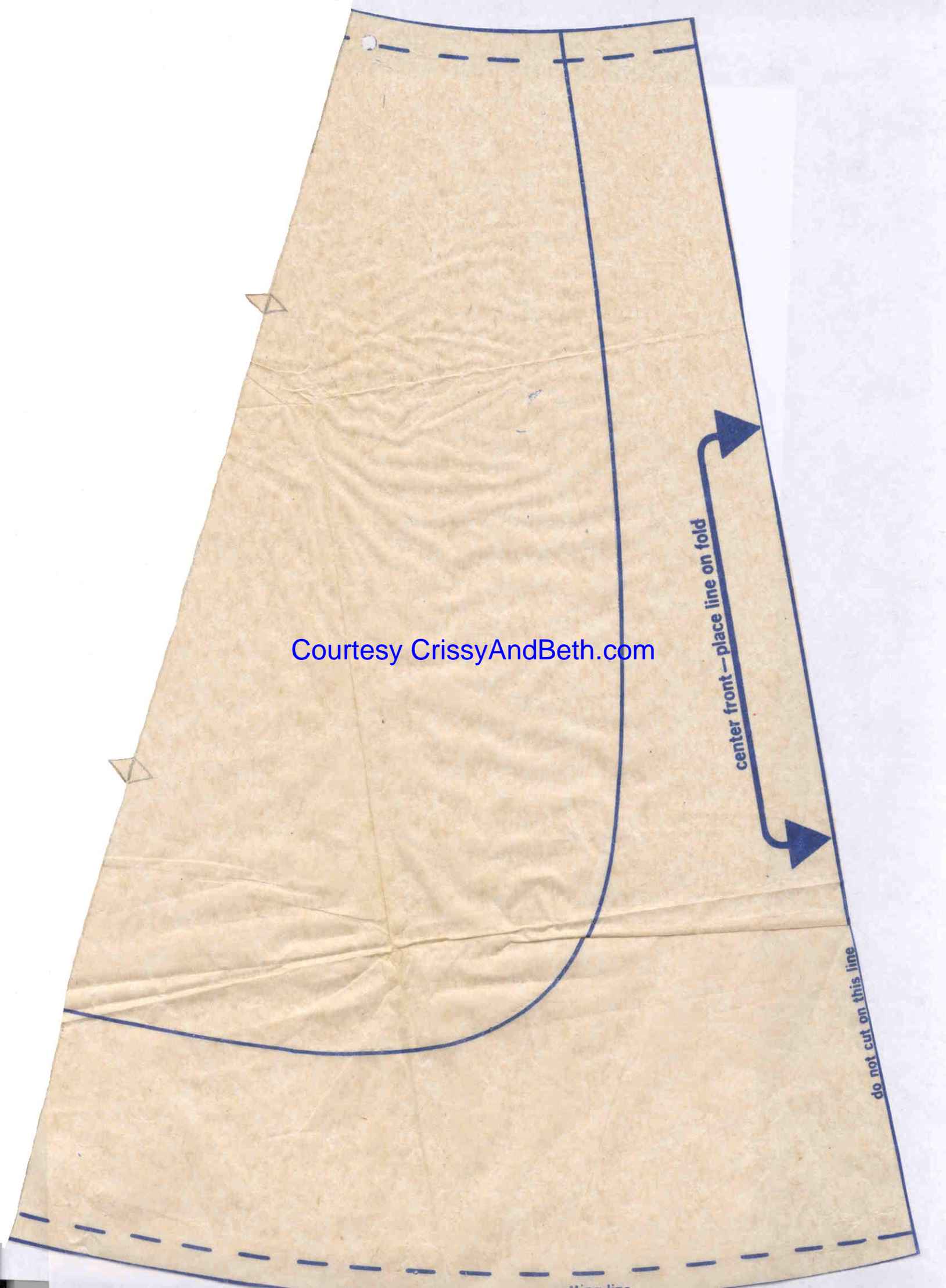
placement for trim

seam line

Courtesy CrissyAndBeth.com

center front—place line on fold

do not cut on this line



About the veil pattern:

This pattern piece in its original state is so large that it will not fit onto a scanner platform, even if cut apart.

So to create a smaller, more workable piece, the veil pattern, being symmetrical, was folded in half. A “place on fold” marker was put on the piece to show the new cutting diagram.

However, this new piece was still too large and so was placed on the scanner in 3 sections. You will need to cut out all 3 sections and tape them together. Color coded markers should help you put these 3 sections together. A certain amount of overlap is to be expected. Simply overlay the markers in place, tape, and cut out one large piece.

After taping the 3 pieces together, you will notice that the full “roundness” of the new single piece isn’t complete (it was STILL too big on the scanner). Using your sewing pencil, mark that in on the fabric after you pin the pattern piece in place. Then cut that full roundness that is missing on the pattern onto the fabric.

The new single pattern piece that you’ve created is almost a full semi-circle.

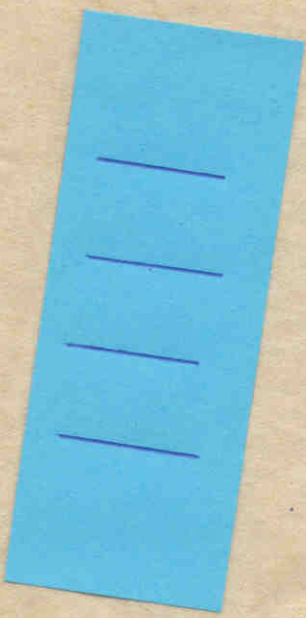
Don’t forget when cutting out the veil, to place the edge on the fold of your fabric.

Place on fold.

gathering line


Simplicity
9698
17 1/2" doll

Courtesy CrissyAndBeth.com



Place on fold.

Simplicity

9698

17½" doll

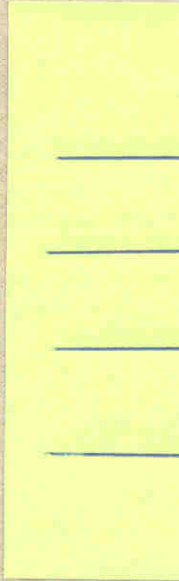
S

veil view 4

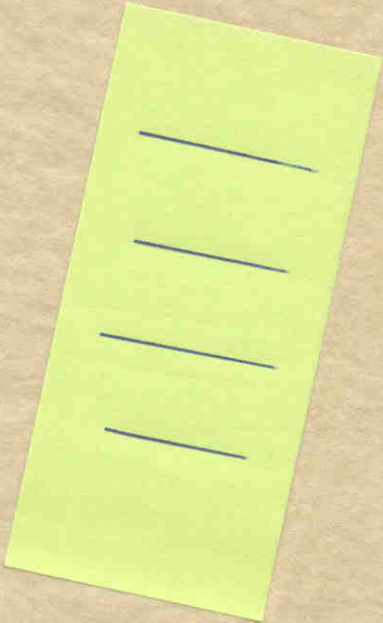
cut 2

Model to view fragments no 2310

Courtesy CrissyAndBeth.com



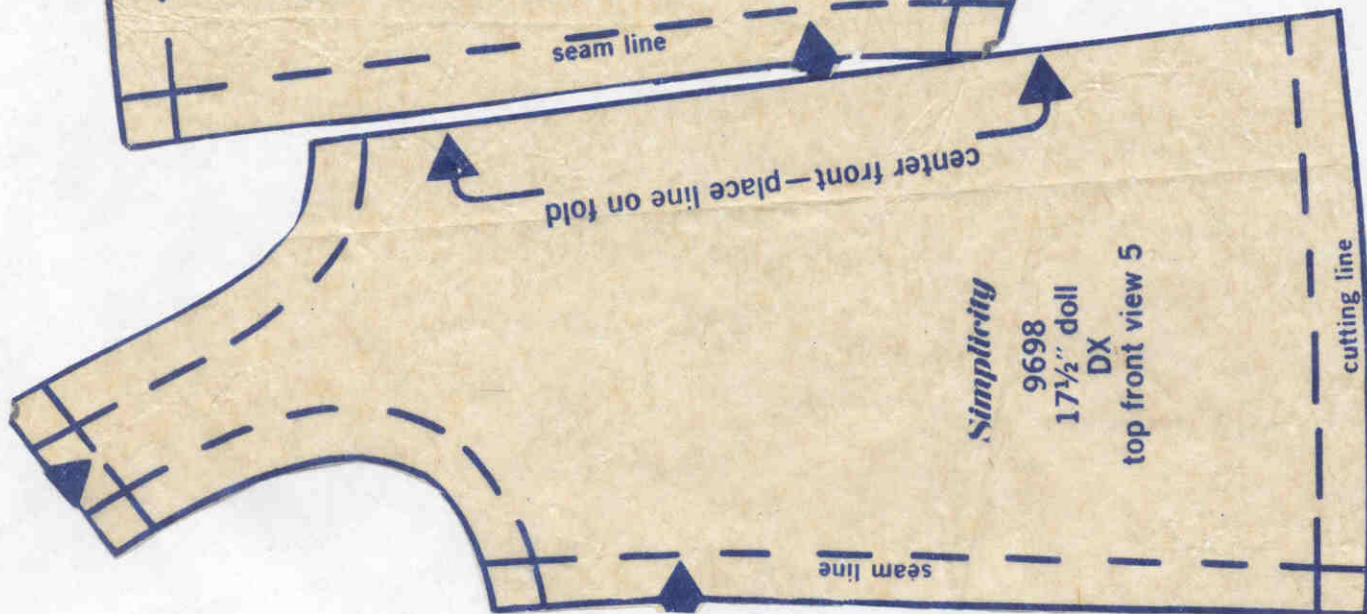
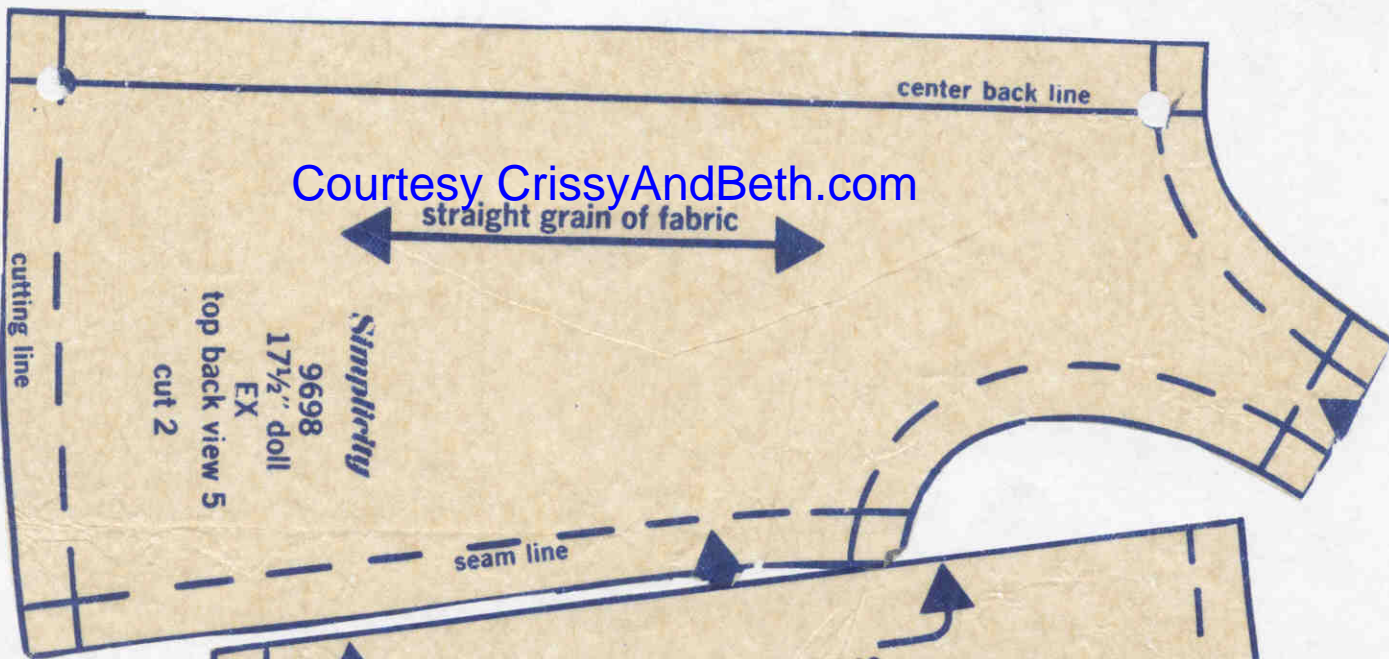
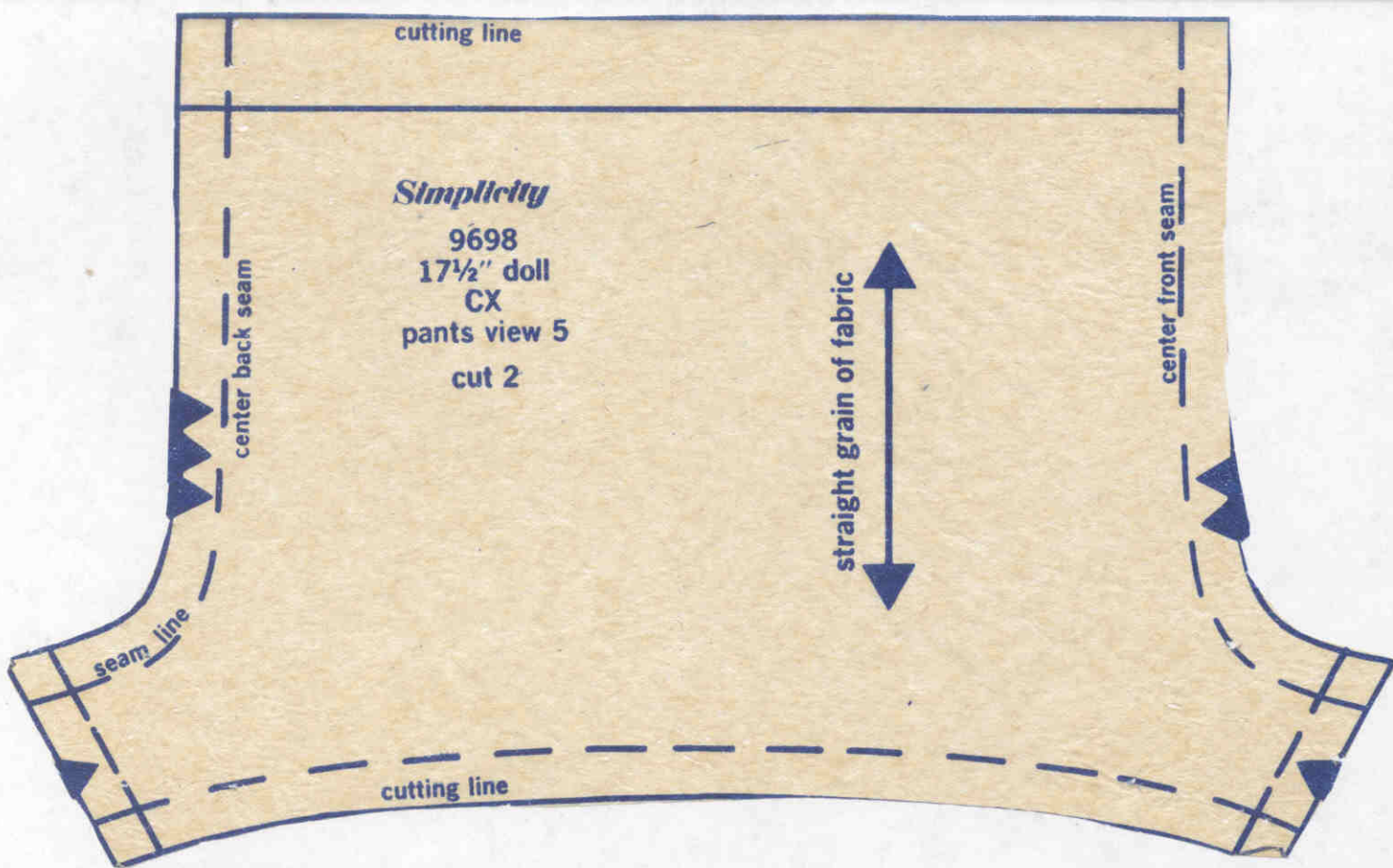
cutting line

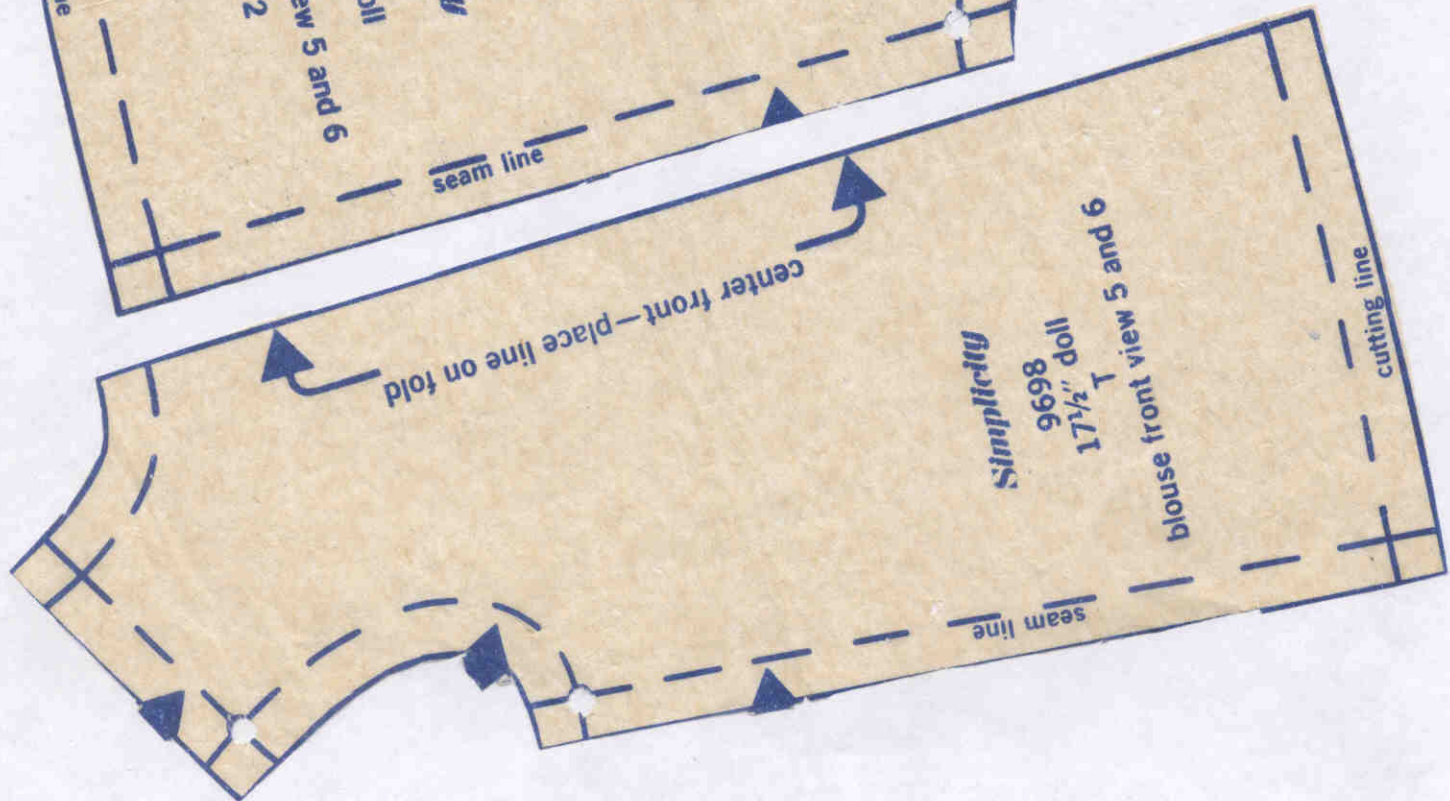
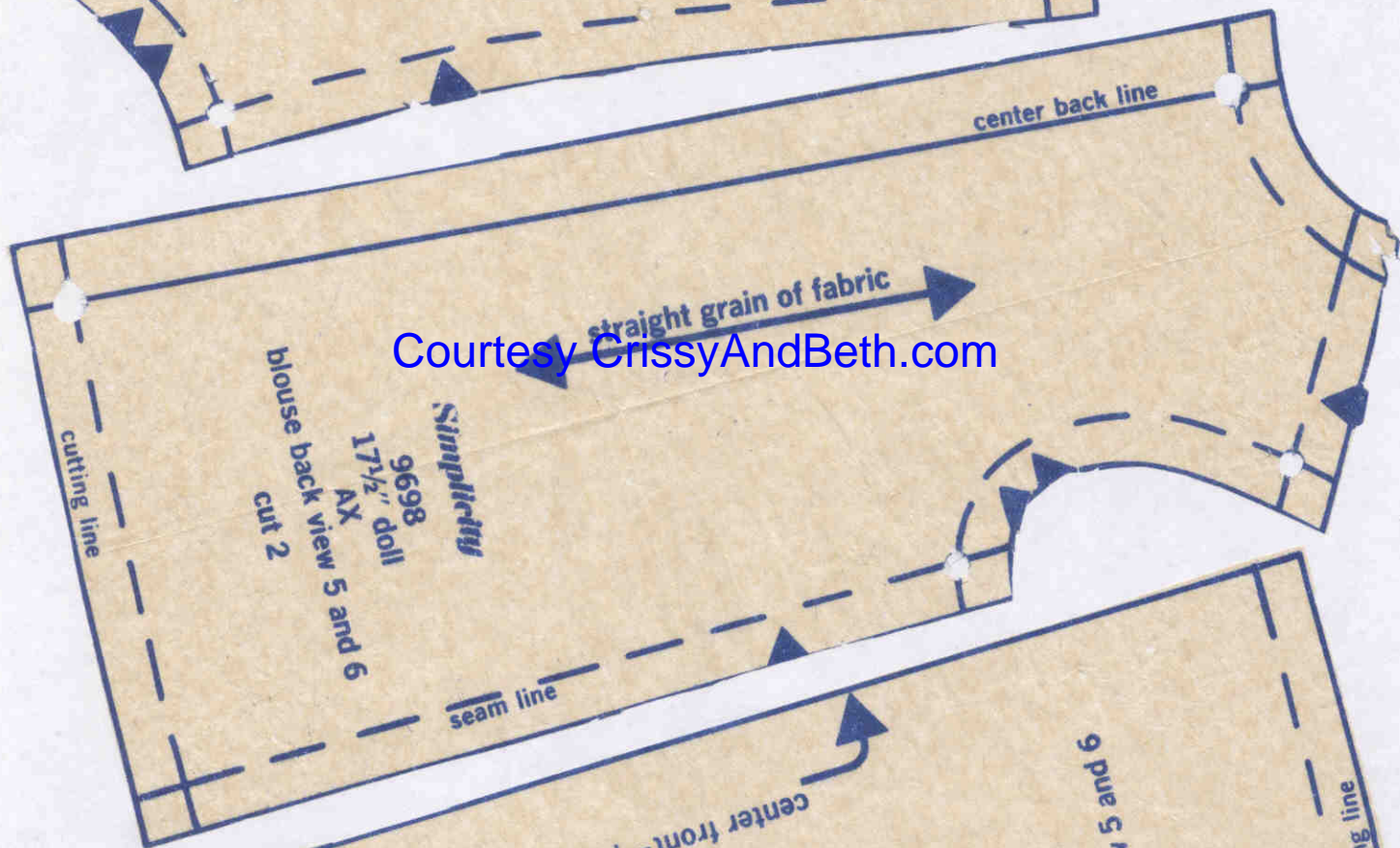
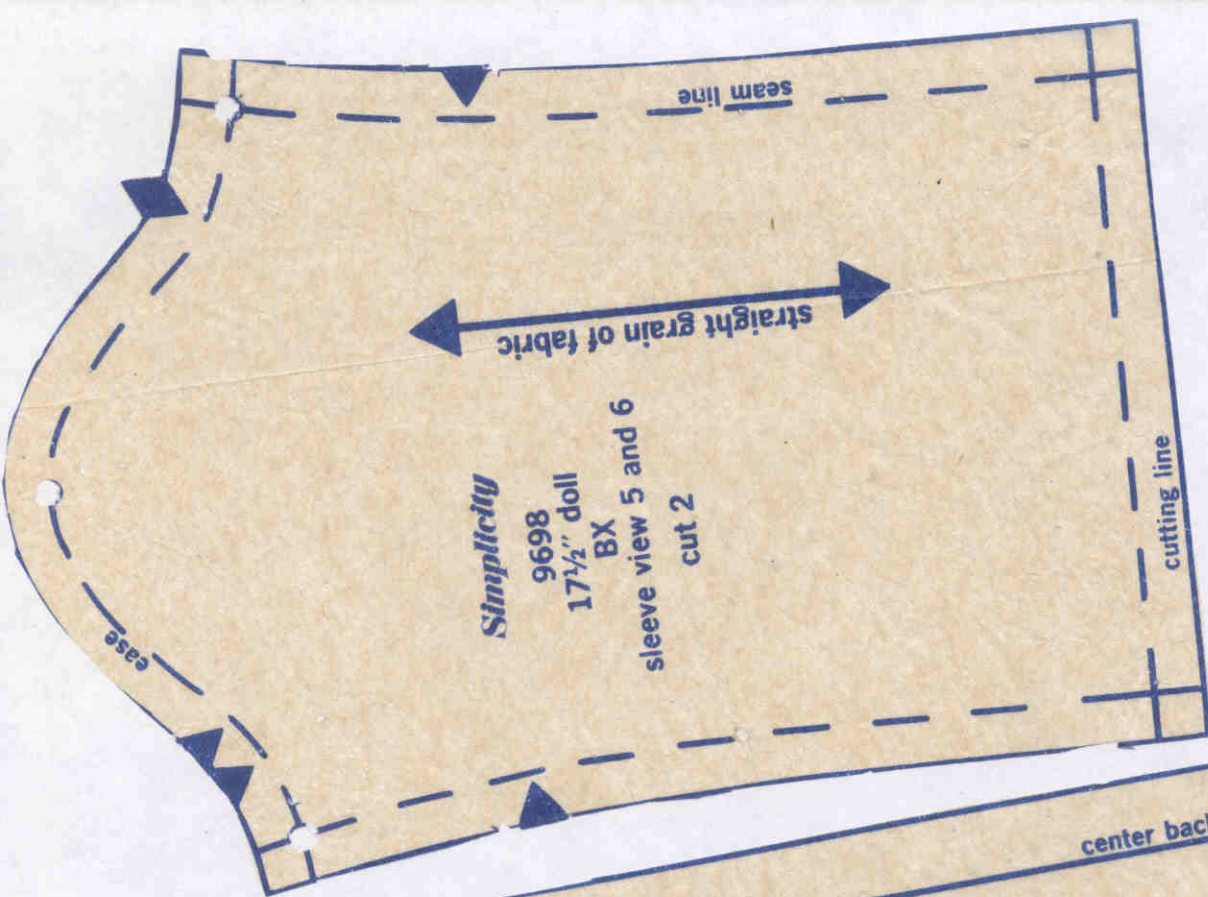


Courtesy CrissyAndBeth.com



Place on fold.





Courtesy CrissyAndBeth.com

cutting line

center back seam

center front seam

Simplicity

9698

17½" doll

FX

knickers view 6

cut 2

Courtesy CrissyAndBeth.com

place on straight grain of fabric

seam line

seam line

cutting line

